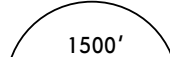


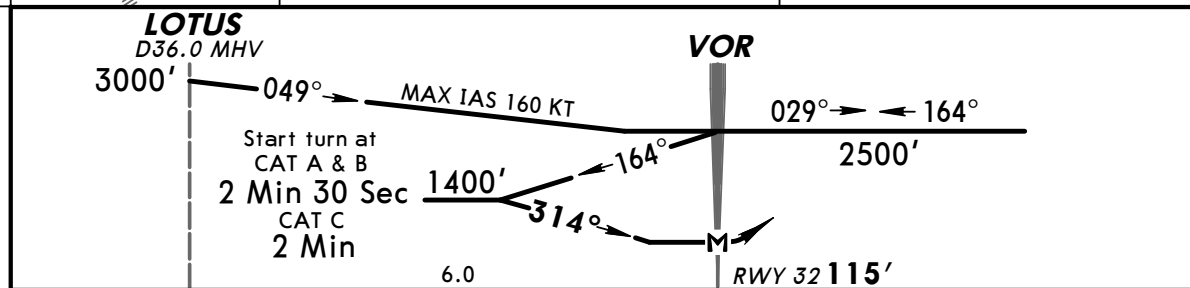
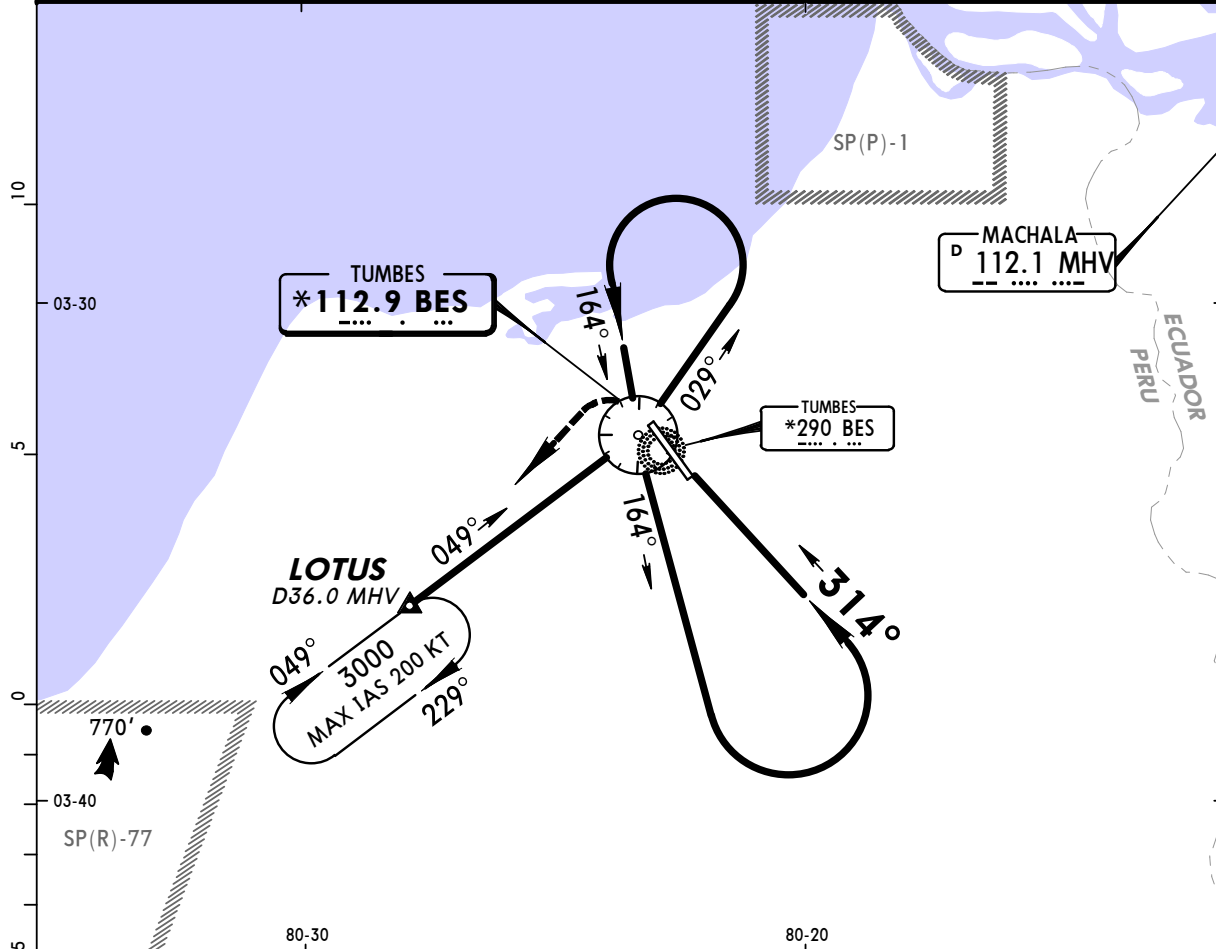
SPME/TBP  
PEDRO CANGA

JEPPESEN  
20 DEC 02 (13-1)

TUMBES, PERU  
CAT A, B & C VOR Rwy 32

BRIEFING STRIP™

*TUMBES Radio 126.8			*TUMBES Tower 118.7		
VOR BES *112.9	Final Apch Crs 314°	No FAF	MDA(H) 800' (685')	Apt Elev 115' RWY 32 115'	
MISSED APCH: Turn LEFT to LOTUS D36.0 MHV and hold climbing to 3000'.					
Alt Set: hPa	Rwy Elev: 3 hPa	Trans level: By ATC	Trans alt: 3000'		
MSA BES VOR					



						SALS	LT	LOTUS	3000'
MAP at VOR						PAPI			

STRAIGHT-IN LANDING RWY 32			CIRCLE-TO-LAND	
MDA(H) <b>800'</b> (685')			Not Authorized in East Sector	
		ALS out	Max Kts	MDA(H)
A	2.0 km		100	800' (685') - 2.8 km
B			135	
C	2.8 km		180	1000' (885') - 3.6 km
D	NOT APPLICABLE		D	NOT APPLICABLE

**SPME/TBP**  
**PEDRO CANGA**

**JEPPESEN**  
20 DEC 02 (13-2)

**TUMBES, PERU**  
**CAT A, B & C VOR**

\*TUMBES Radio

126.8

\*TUMBES Tower

118.7

<small>VOR BES</small> <b>*112.9</b>	<small>Final Apch Crs</small> <b>017°</b>	No FAF	<small>MDA (H) Refer to Minimums</small>	<small>Apt Elev</small> <b>115'</b>
---	--	--------	--	-------------------------------------

**MISSED APCH: Climbing LEFT turn to 3000' direct to BES VOR.**

**MSA BES VOR**

Alt Set: hPa  
 1. Max IAS 185 KT.

Apt Elev: 3 hPa

Trans level: By ATC

Trans alt: 3000'

Start turn at

CAT A & B 2 Min

CAT C 1 Min 30 Sec

to 1400'

	Lighting - Refer to Airport Chart	<b>3000'</b> 		<small>BES</small> <b>*112.9</b>
--	-----------------------------------	------------------	--	-------------------------------------

STRAIGHT-IN LANDING

CIRCLE-TO-LAND

Not Authorized in East Sector

		Max Kts.	
A	NA	100	<b>800'</b> (685')-2.8 km
B		135	
C		180	<b>1000'</b> (885')-3.6 km
D		D	NOT APPLICABLE

PANS OPS

**CHANGES:** Airport elevation.

© JEPPESEN SANDERSON, INC., 2001, 2002. ALL RIGHTS RESERVED.

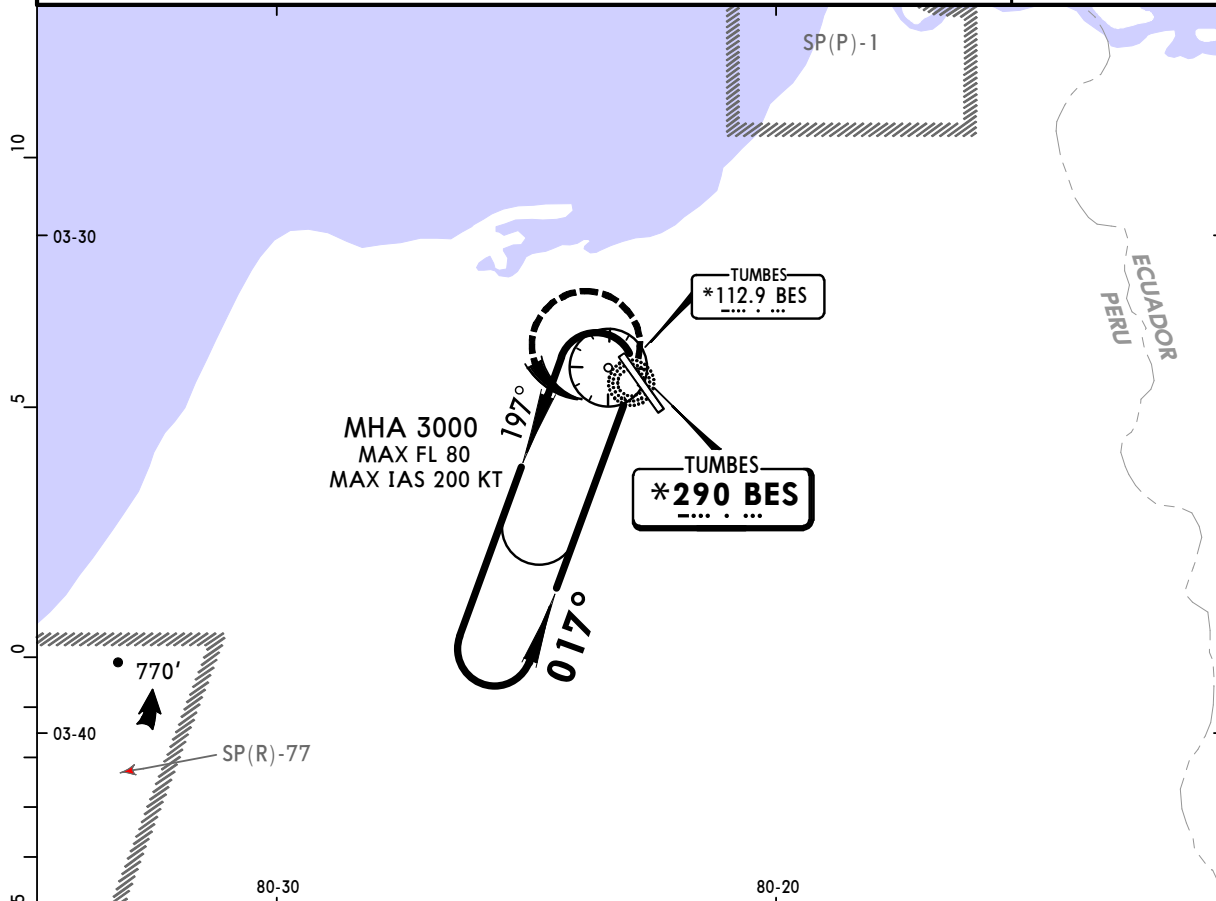
**SPME/TBP**  
**PEDRO CANGA**

**JEPPESEN**  
20 DEC 02 (16-1)

**TUMBES, PERU**  
**CAT A, B & C NDB**

**BRIEFING STRIP™**

*TUMBES Radio				*TUMBES Tower	
126.8				118.7	
NDB BES *290	Final Apch Crs 017°	No FAF	MDA(H) Refer to Minimums	Apt Elev 115'	
MISSED APCH: Climbing LEFT turn to 3000' direct to BES NDB.					
Alt Set: hPa 1. Max IAS 185 KT.	Apt Elev: 3 hPa	Trans level: By ATC	Trans alt: 3000'	MSA BES NDB	



Start turn  
at  
CAT A & B 2 Min  
CAT C 1 Min 30 Sec  
to  
1400'

**NDB**

Descend from MEA to 3000'

**V**

**M**

APT. 115'

[illegible]

## STRAIGHT-IN LANDING

CIRCLE-TO-LAND

Not Authorized  
in East Sector

Max	
Kts	

• *MDA (H)*

**800' (685') - 2.8 km**

**1000' (885')-3.6 km**

NOT APPLICABLE

**PANS OPS**

A
B
C
D

NA

Notice: After 07/12/2006 0901Z this chart should not be used without first checking JeppView or NOTAMs.

SPME/TBP

Apt Elev 115'

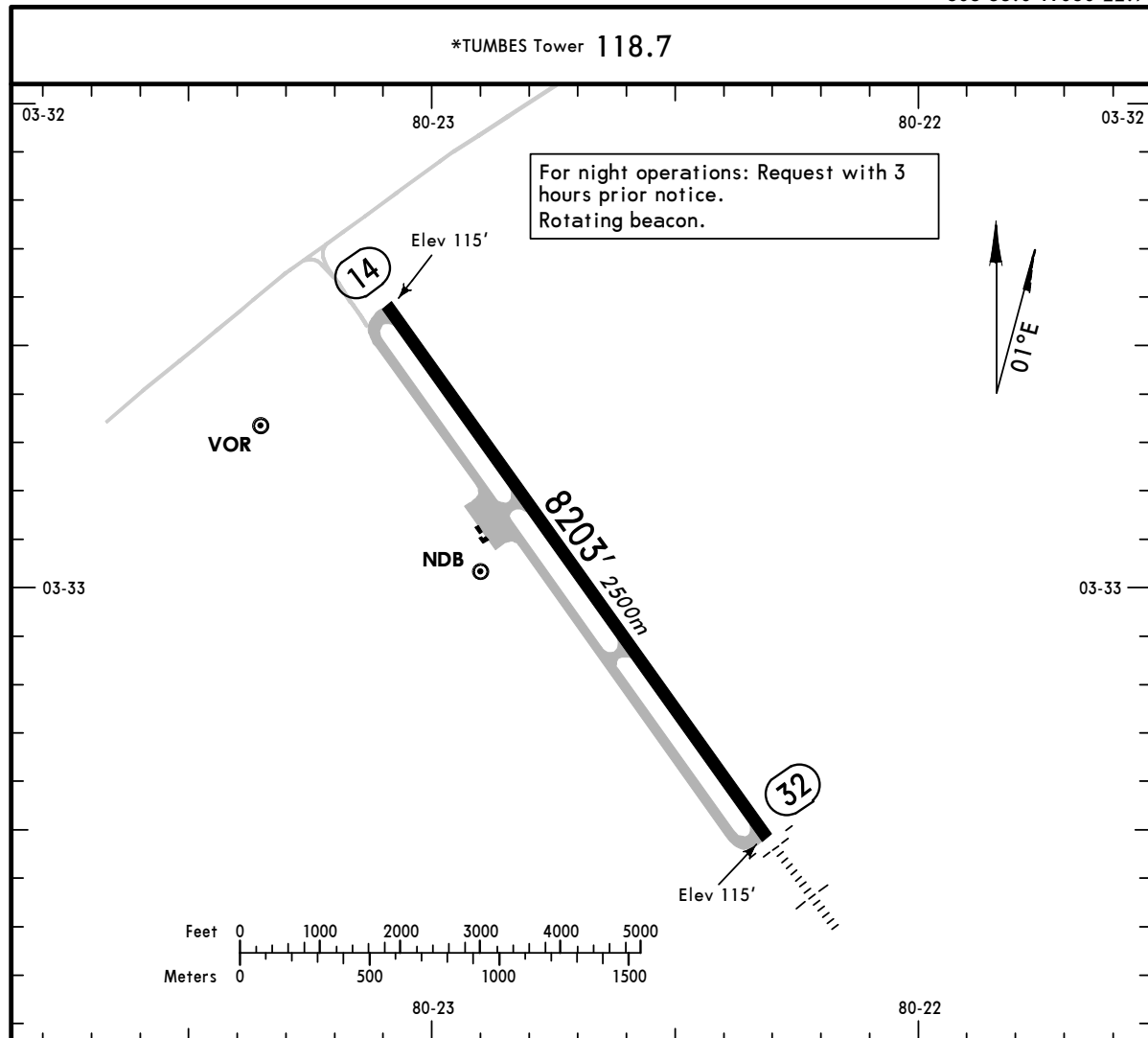
JEPPESEN

20 DEC 02 (13-1)

TUMBES, PERU

PEDRO CANGA

S03 33.0 W080 22.7



# ADDITIONAL RUNWAY INFORMATION

RWY		USABLE LENGTHS		TAKE-OFF	WIDTH
		— LANDING BEYOND —			
		Threshold	Glide Slope		
14	RL				148'
32	RL SALS PAPI				45m

TAKE-OFF			
AIR CARRIER (JAA)			
All Rwy's			
LVP must be in Force			
RCLM (Day only) or RL		RCLM (Day only) or RL	
A			
B	250m		
C		400m	
D	300m		