

Notice: After 07/12/2006 0901Z this chart should not be used without first checking JeppView or NOTAMs.

SPLO

Apt Elev **72'**
S17 41.7 W017 21.6

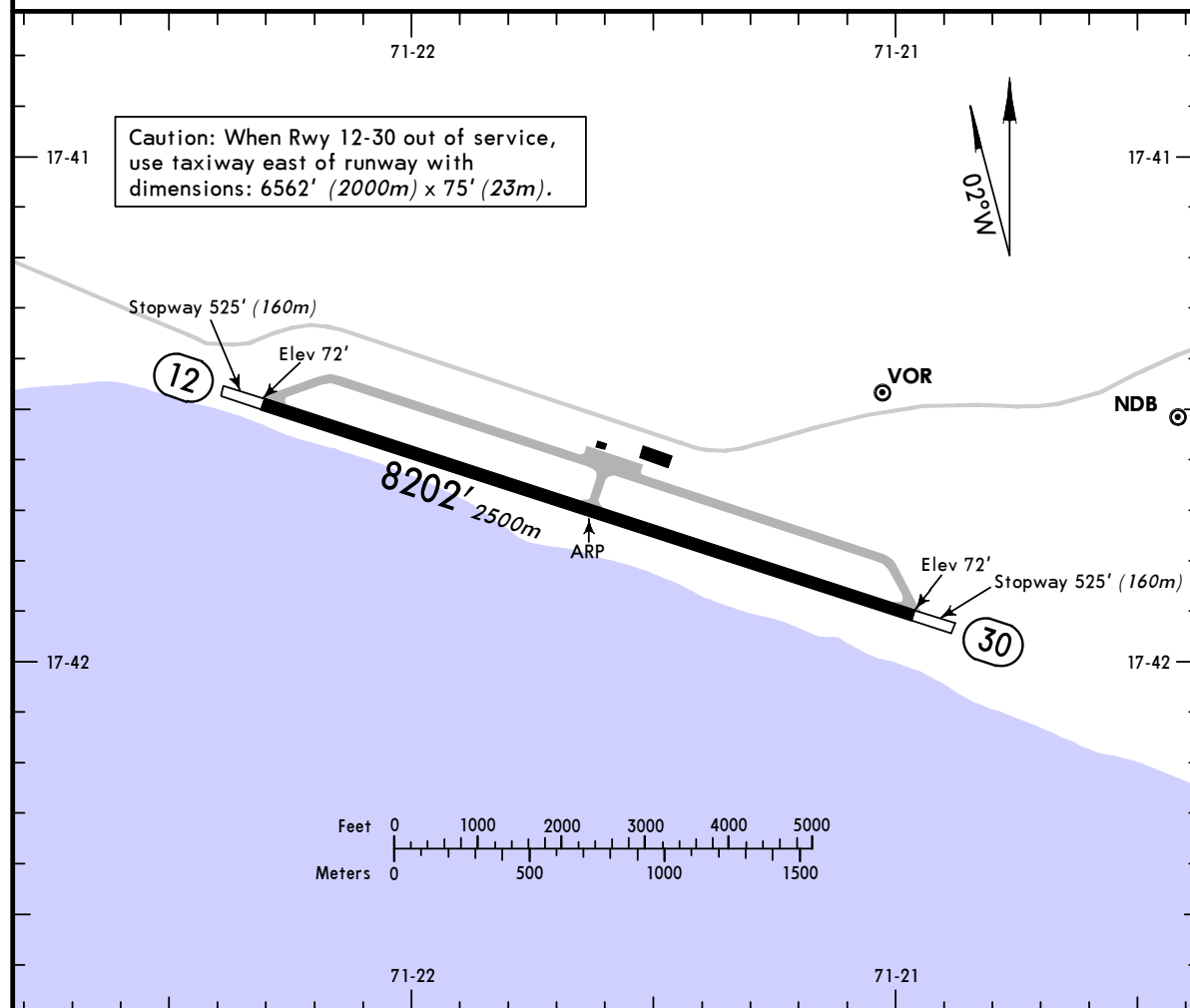
JEPPESEN

23 APR 04 **(10-9)**

ILO, PERU

ILO

*ILO Radio (AFIS) **126.9**



ADDITIONAL RUNWAY INFORMATION

| RWY | | USABLE LENGTHS | | TAKE-OFF | WIDTH |
|-----|--|----------------|-------------|----------|-------|
| | | Threshold | Glide Slope | | |
| 12 | | | | | 148' |
| 30 | | | | | 45m |
| | | | | | |
| | | | | | |
| | | | | | |
| | | | | | |

TAKE-OFF

| | AIR CARRIER | | AIR CARRIER (FAR 121) | |
|---|-------------|--|------------------------------|------|
| | All Rwys | | All Rwys Adequate Vis Ref | |
| A | 400m | | 2 Eng | 400m |
| B | | | 3 & 4 Eng | |
| C | | | | |
| D | | | | |

CHANGES: Runway renumbered.

© JEPPESEN SANDERSON, INC., 2000, 2004. ALL RIGHTS RESERVED.

Notice: After 07/12/2006 0901Z this chart should not be used without first checking JeppView or NOTAMs.

SPLO

ILO

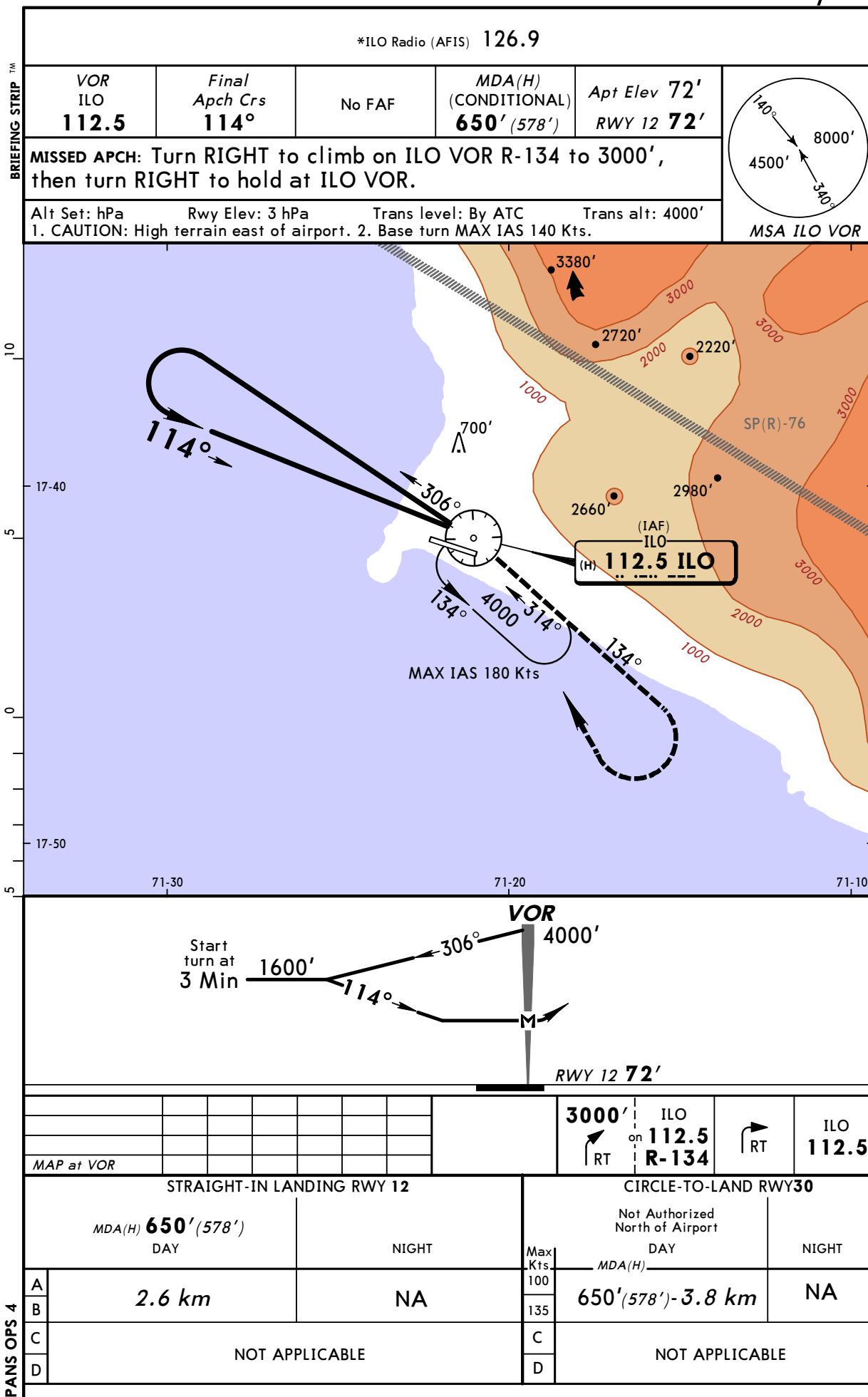
JEPPESEN

5 NOV 04 (13-1)

CAT A & B

DESCENT CHARLIE VOR Rwy 12

ILO, PERU



Notice: After 07/12/2006 0901Z this chart should not be used without first checking JeppView or NOTAMs.

SPLO
ILO

JEPPesen CAT C
5 NOV 04 (13-2)

ILO, PERU
DESCENT DELTA VOR Rwy 12

