

SPJL/JUL  
INCA MANCO CAPAC INTL

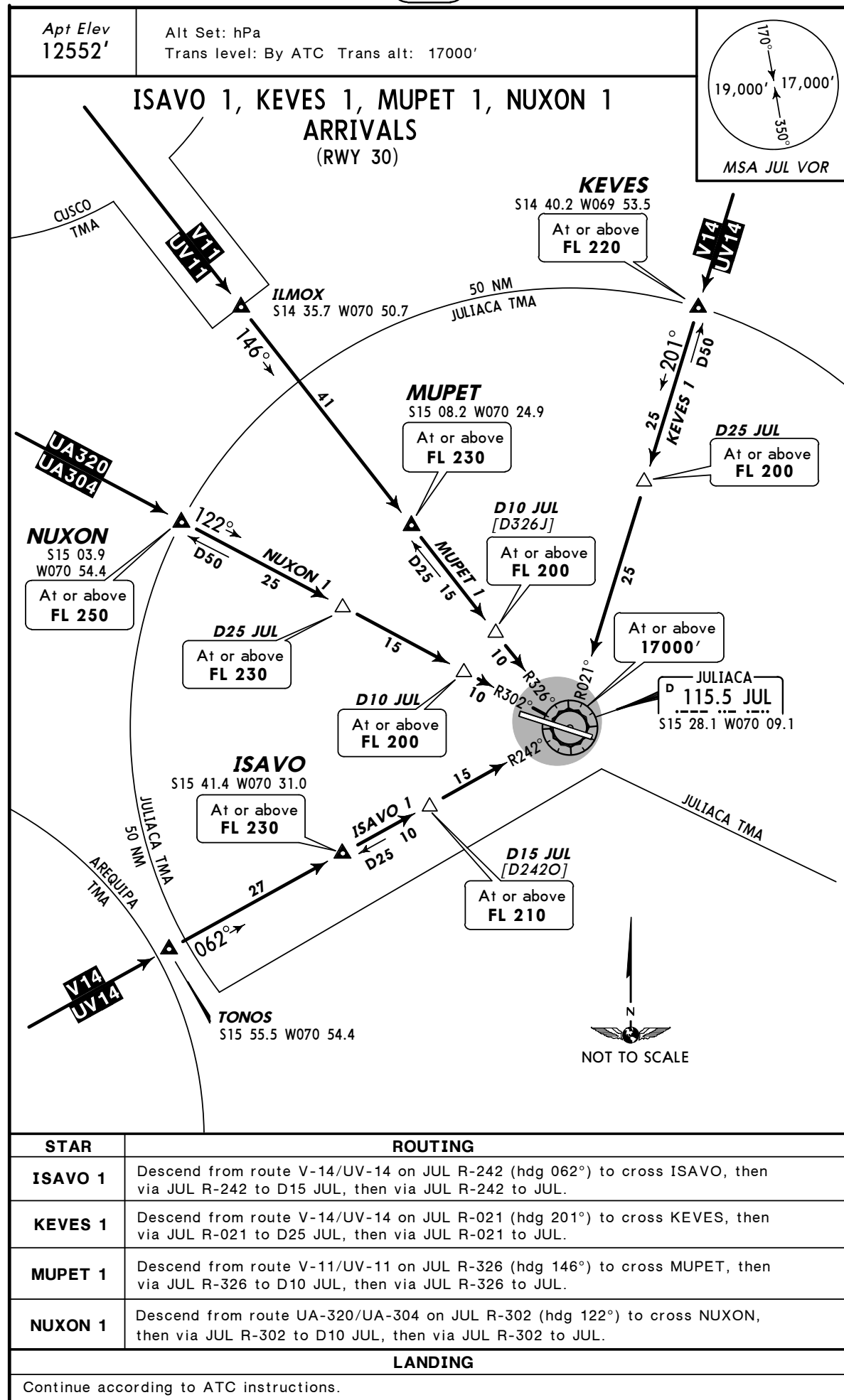
JEPPesen

10-2

29 JUL 05

JULIACA, PERU

STAR



SPJL/JUL  
INCA MANCO CAPAC INTL

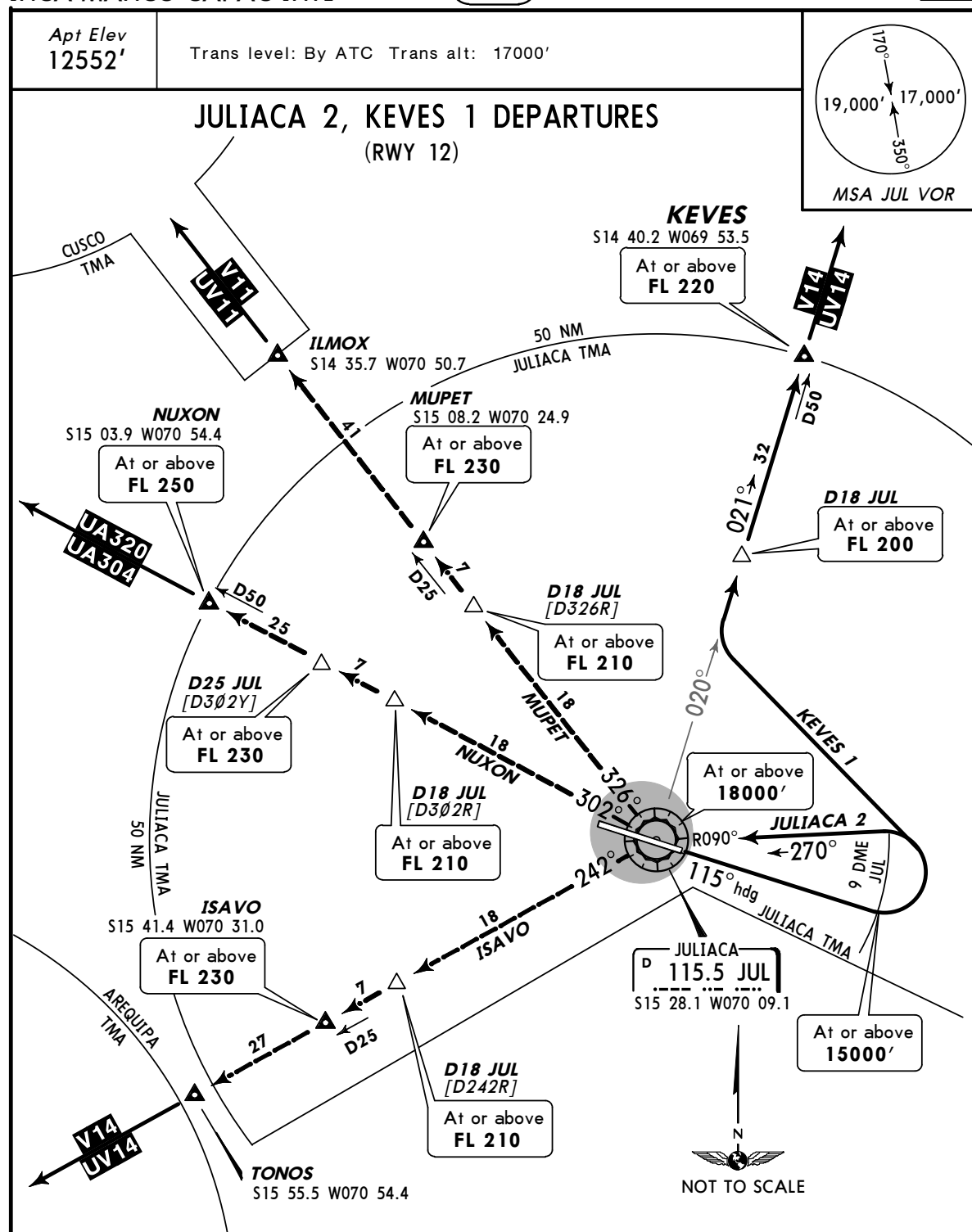
JEPPesen

10-3

29 JUL 05

JULIACA, PERU

SID



INITIAL CLIMB	
Climb on heading 115° (JUL R-115) and cross 9 DME JUL.	
SID	ROUTING
JULIACA 2	Turn LEFT to intercept and proceed via JUL R-090 to JUL.
KEVES 1	Turn LEFT to intercept and proceed via JUL R-020 to D18 JUL, then via JUL R-021 to KEVES.
JULIACA 2 TRANSITIONS	
ISAVO	Climbing LEFT turn to intercept JUL R-242 (hdg 242°) to D18 JUL, then via JUL R-242 to ISAVO. Continue climbing on V-14/UV-14 and follow ATC instructions.
MUPET	Climbing RIGHT turn to intercept JUL R-326 (hdg 326°) to D18 JUL, then via JUL R-326 to MUPET. Continue climbing on V-11/UV-11 and follow ATC instructions.
NUXON	Climbing RIGHT turn to intercept JUL R-302 (hdg 302°) to D18 JUL, then to D25 JUL, then via JUL R-302 to NUXON. Continue climbing on UA-320/UA-304 and follow ATC instructions.

SP JL / JUL

MANCO CAPAC INTL

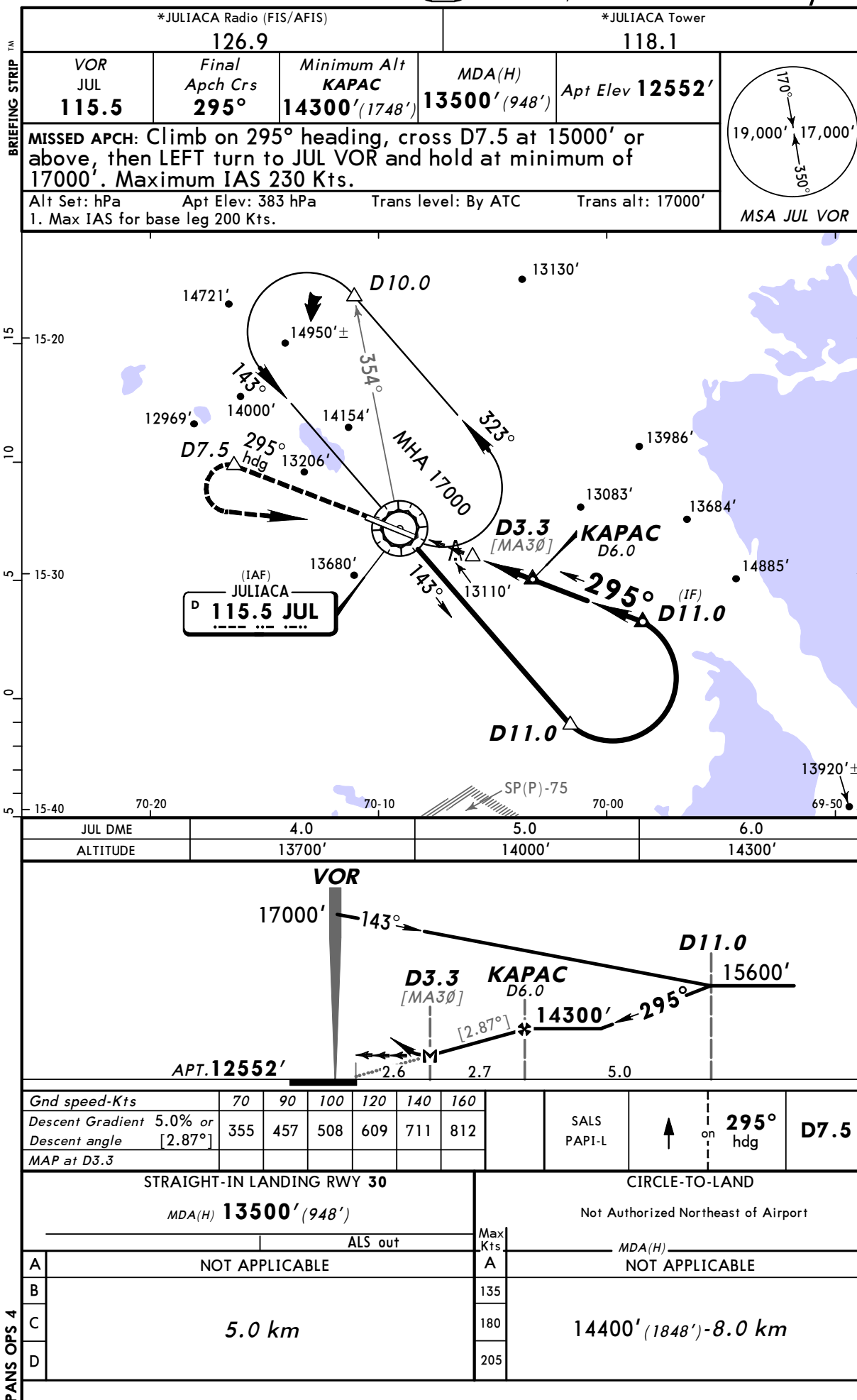
JEPPesen

31 DEC 04 (13-1)

CAT B, C & D

JULIACA, PERU

VOR DME Rwy 30



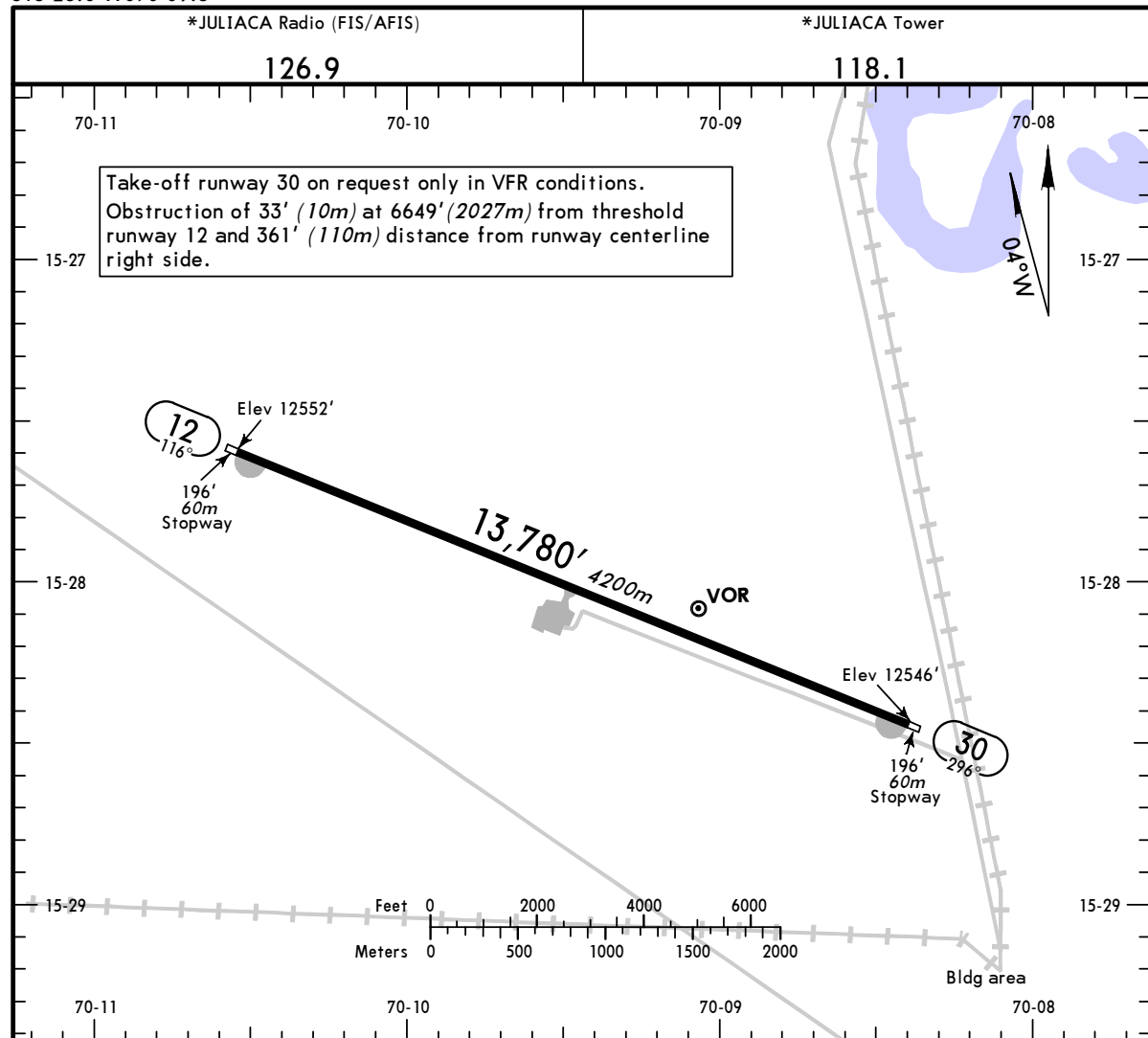
Notice: After 07/12/2006 0901Z this chart should not be used without first checking JeppView or NOTAMs.

SPJL/JUL  
Apt Elev **12552'**  
S15 28.0 W070 09.5

**JEPPesen**

31 DEC 04 **(13-1)**

**JULIACA, PERU**  
**MANCO CAPAC INTL**



**ADDITIONAL RUNWAY INFORMATION**

RWY		USABLE LENGTHS			WIDTH
		Threshold	Landing Beyond Glide Slope	TAKE-OFF	
12	RL (60m) PAPI-R (angle 3.0°)				148'
30	RL (60m) SALS PAPI-L (angle 3.0°)				45m

**TAKE-OFF**

**Rwy 30**

1 & 2  
Eng  
3 & 4  
Eng

On request only in VFR conditions