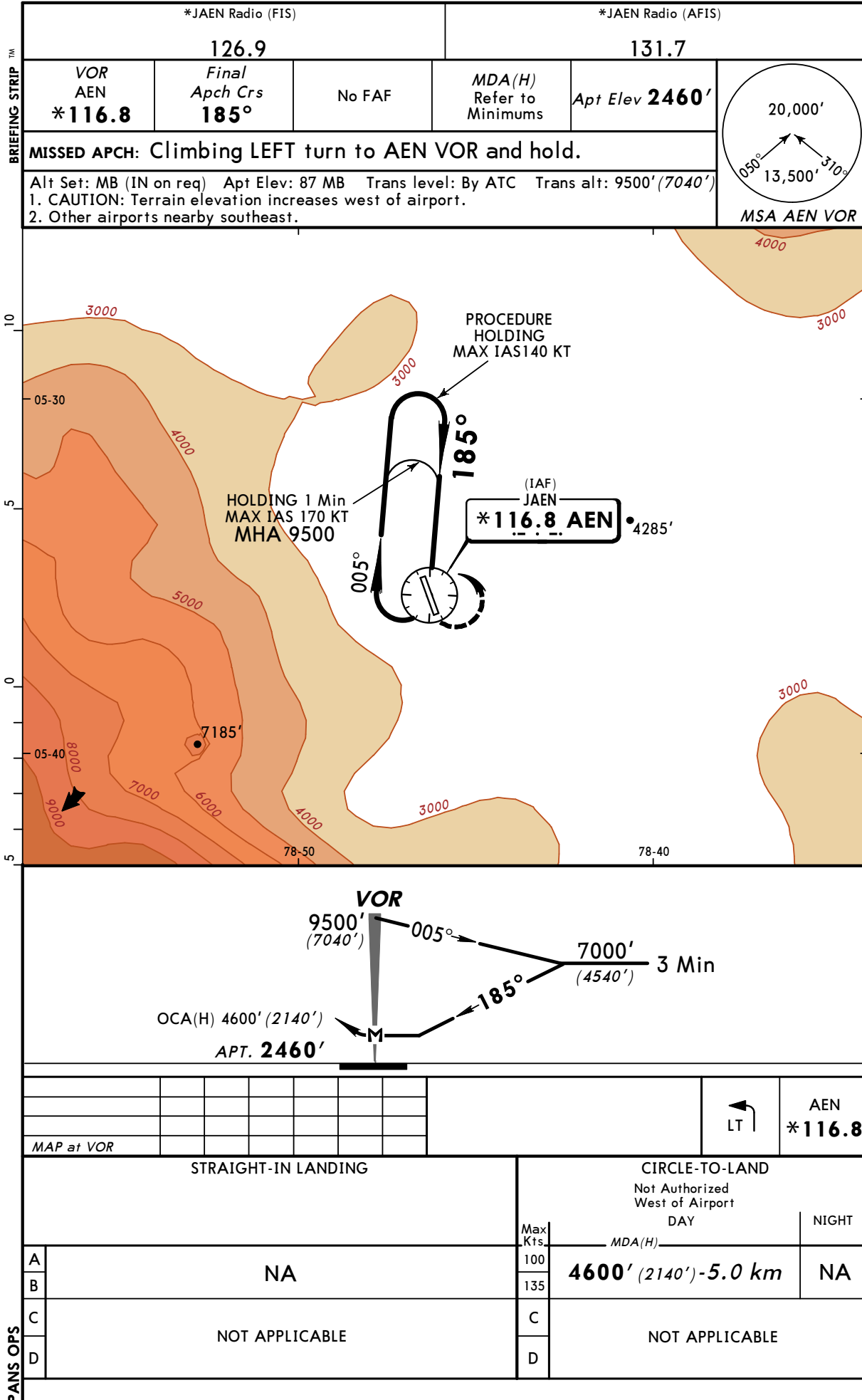


SPJE  
SHUMBA

JEPPESEN  
20 JUL 01 (13-1)

JAEN, PERU  
CAT A & B VOR



Notice: After 07/12/2006 0901Z this chart should not be used without first checking JeppView or NOTAMs.

**SPJE**

Apt Elev **2460'**

**JEPPESEN**

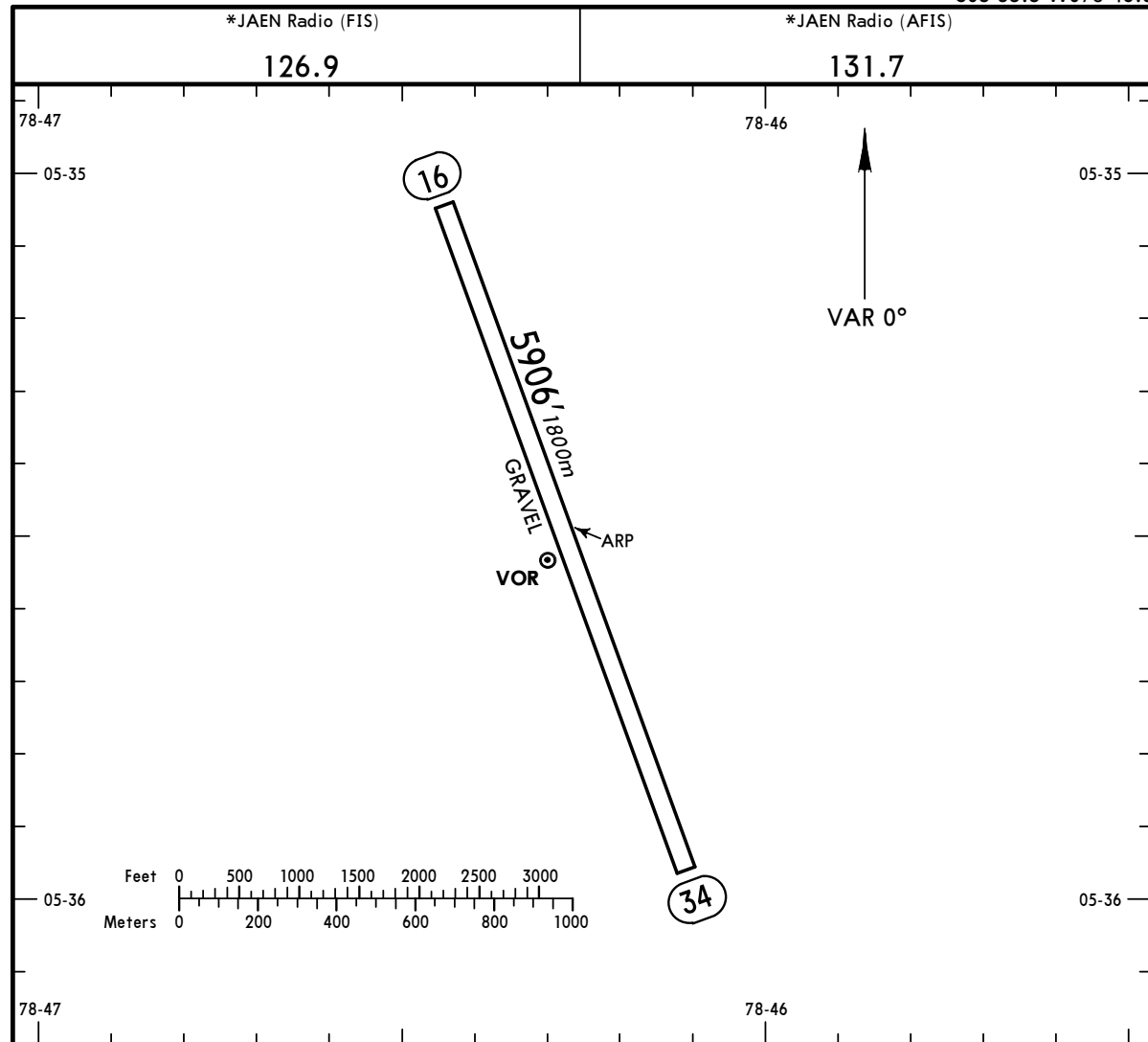
20 JUL 01

(13-1)

**JAEN, PERU**

**SHUMBA**

S05 35.5 W078 46.3



**ADDITIONAL RUNWAY INFORMATION**

RWY	USABLE LENGTHS		TAKE-OFF	WIDTH
	Threshold	Landing Beyond Glide Slope		
16				148'
34				45m

**TAKE-OFF**

AIR CARRIER (JAA)			
All Rwy's (DAY only)			
A	500m		
B			
C			
D			

CHANGES: New airport.

© JEPPESEN SANDERSON, INC., 2001. ALL RIGHTS RESERVED.