

SPIM/LIM
JORGE CHAVEZ INTL

15 JUL 05 (10-2)

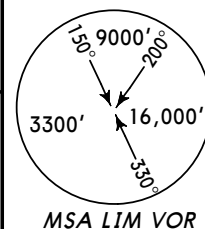
LIMA-CALLAO, PERU

STAR

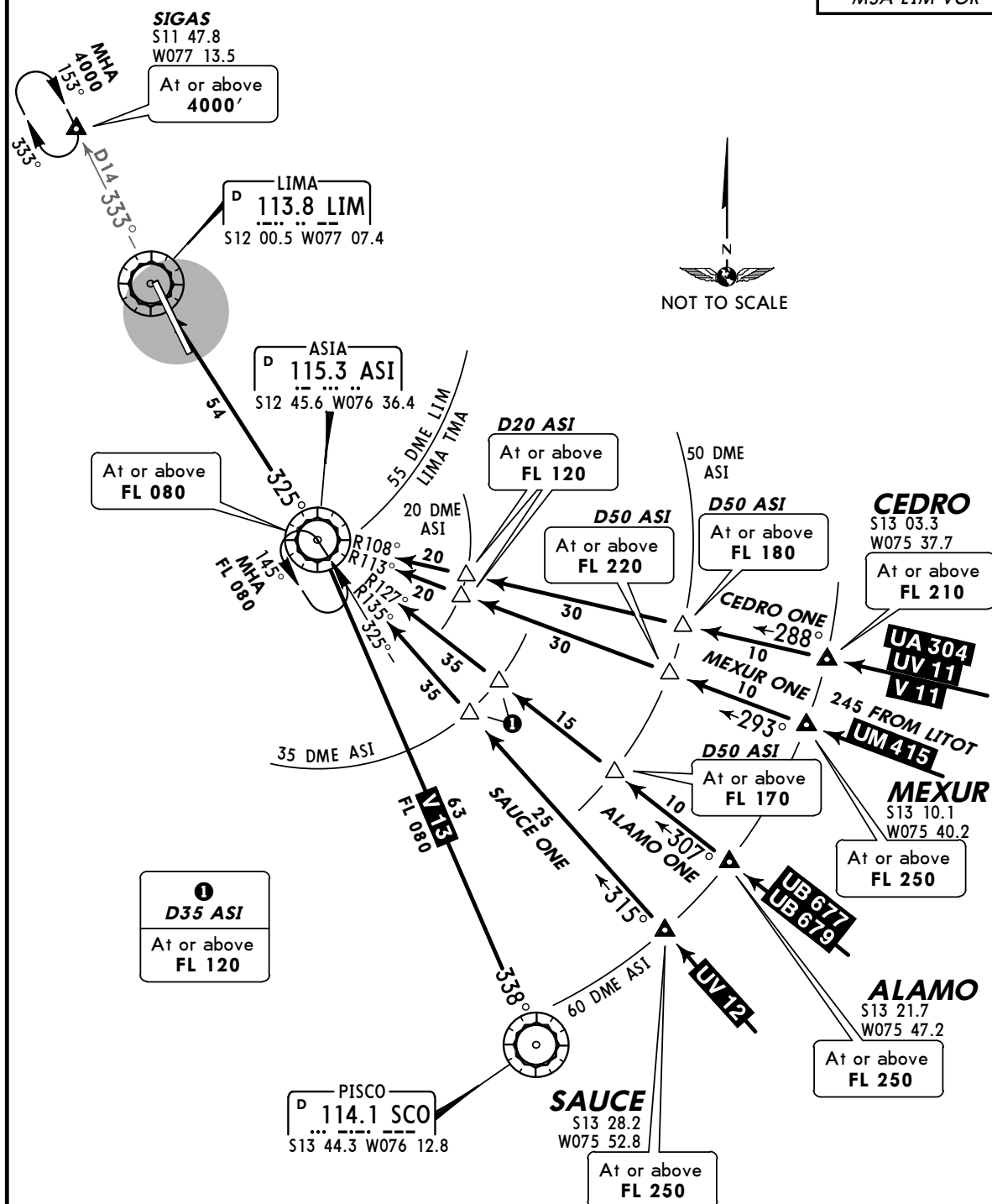
ATIS
127.9

Apt Elev
113'

Alt Set: hPa Trans level: By ATC Trans alt: 4000'



ALAMO ONE, CEDRO ONE,
MEXUR ONE, SAUCE ONE ARRIVALS
(RWYS 15, 33)



STAR	ROUTING
ALAMO ONE	Descend from routes UB-677, or UB-679. Continue to SIGAS in accordance with ATC instructions.
CEDRO ONE	Descend from routes V-11, UV-11, or UA-304. Continue to SIGAS in accordance with ATC instructions.
MEXUR ONE	Descend from route UM-415. Continue to SIGAS in accordance with ATC instructions.
SAUCE ONE	Descend from route UV-12. Continue to SIGAS in accordance with ATC instructions.

CHANGES: V-13, MEXUR ONE revised.

© JEPPESEN SANDERSON, INC., 2004, 2005. ALL RIGHTS RESERVED.

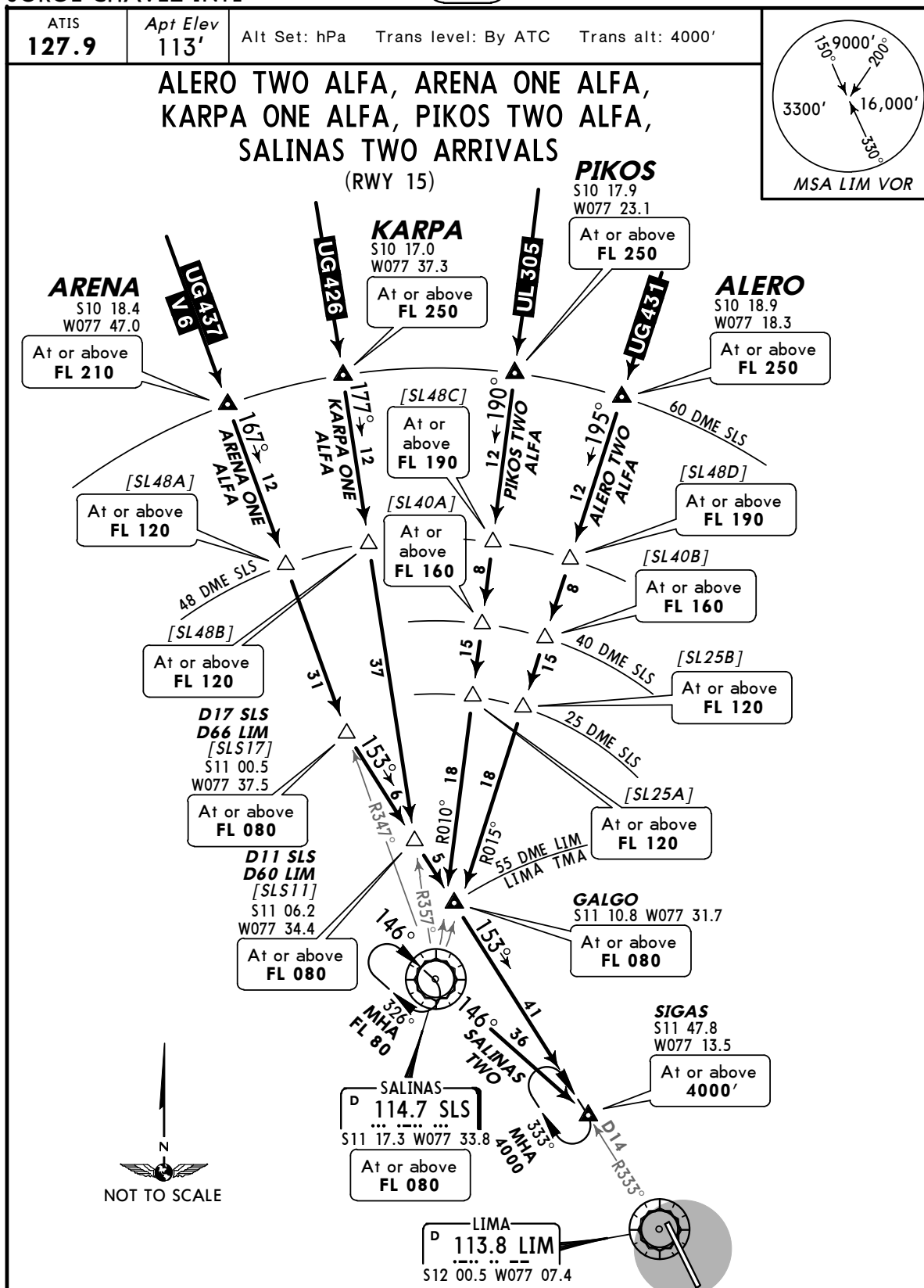
SPIM/LIM
JORGE CHAVEZ INTL

JEPPesen

15 JUL 05 **(10-2A)**

LIMA-CALLAO, PERU

STAR



STAR	ROUTING
ALERO TWO ALFA	Descend from route UG-431. Turn LEFT to intercept LIM R-333, continue to SIGAS in accordance with ATC instructions.
ARENA ONE ALFA	Descend from routes V-6, or UG-437. Turn LEFT to intercept LIM R-333, continue to SIGAS in accordance with ATC instructions.
KARPA ONE ALFA	Descend from route UG-426. Turn LEFT to intercept LIM R-333, continue to SIGAS in accordance with ATC instructions.
PIKOS TWO ALFA	Descend from route UL-305. Turn LEFT to intercept LIM R-333, continue to SIGAS in accordance with ATC instructions.
SALINAS TWO	Descend from routes UL-312, UL-344, UL-308, UG-436, V-1, UV-1, or G-675. Continue on SLS R-146 to SIGAS in accordance with ATC instructions.

SPIM/LIM
JORGE CHAVEZ INTL

JEPPesen

15 JUL 05 **10-2B**

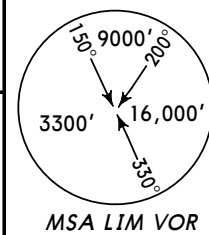
LIMA-CALLAO, PERU

STAR

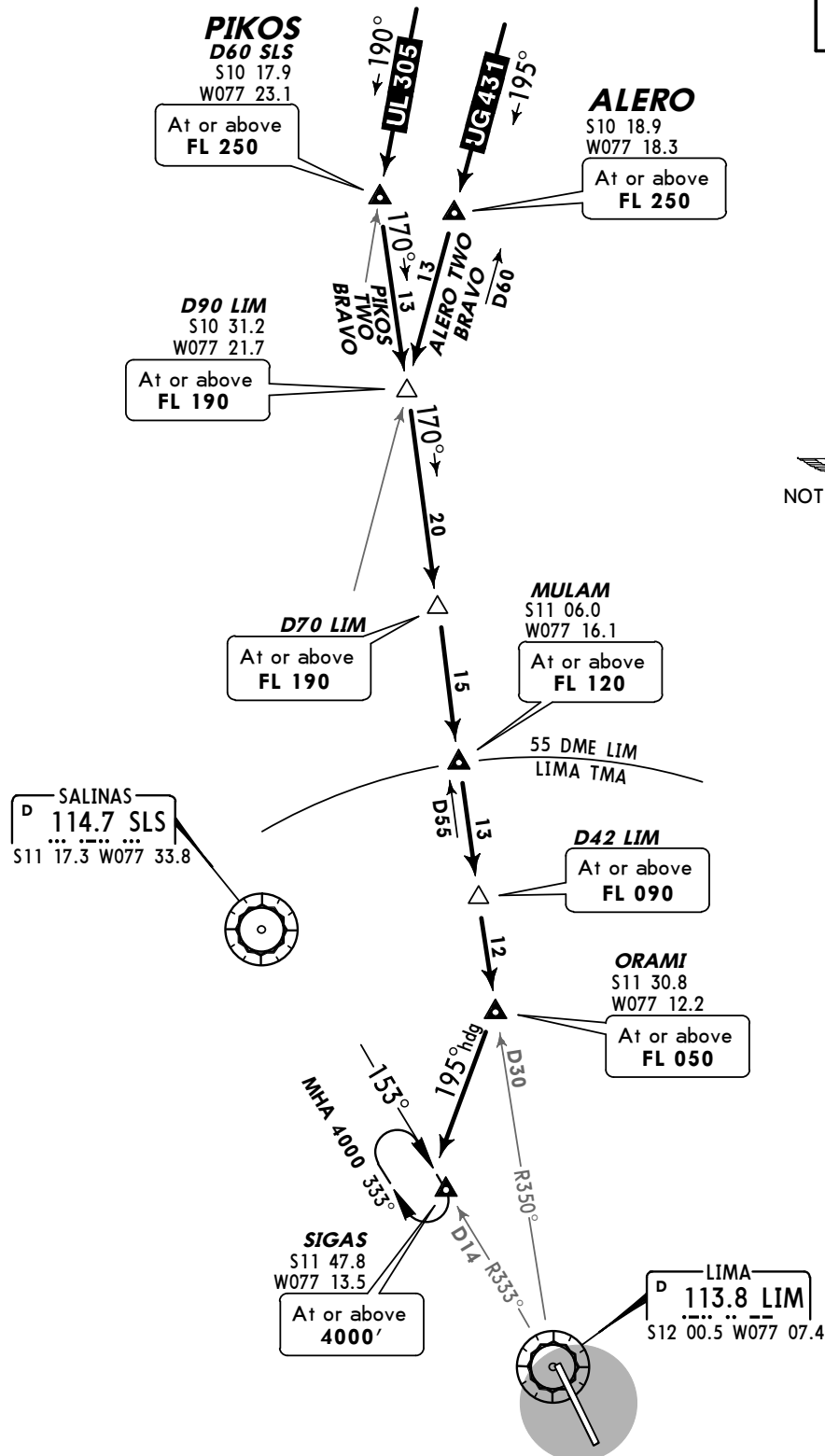
ATIS
127.9

Apt Elev
113'

Alt Set: hPa Trans level: By ATC Trans alt: 4000'



ALERO TWO BRAVO, PIKOS TWO BRAVO ARRIVALS (RWY 15)



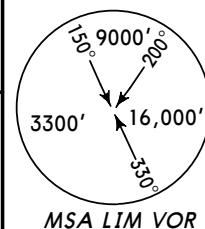
STAR	ROUTING
ALERO TWO BRAVO	Descend from route UG-431, intercept and continue via LIM R-350. Turn RIGHT heading 195° to intercept LIM R-333, continue to SIGAS in accordance with ATC instructions.
PIKOS TWO BRAVO	Descend from route UL-305, turn LEFT to intercept LIM R-350. Turn RIGHT heading 195° to intercept LIM R-333, continue to SIGAS in accordance with ATC instructions.

SPIM/LIM
JORGE CHAVEZ INTL

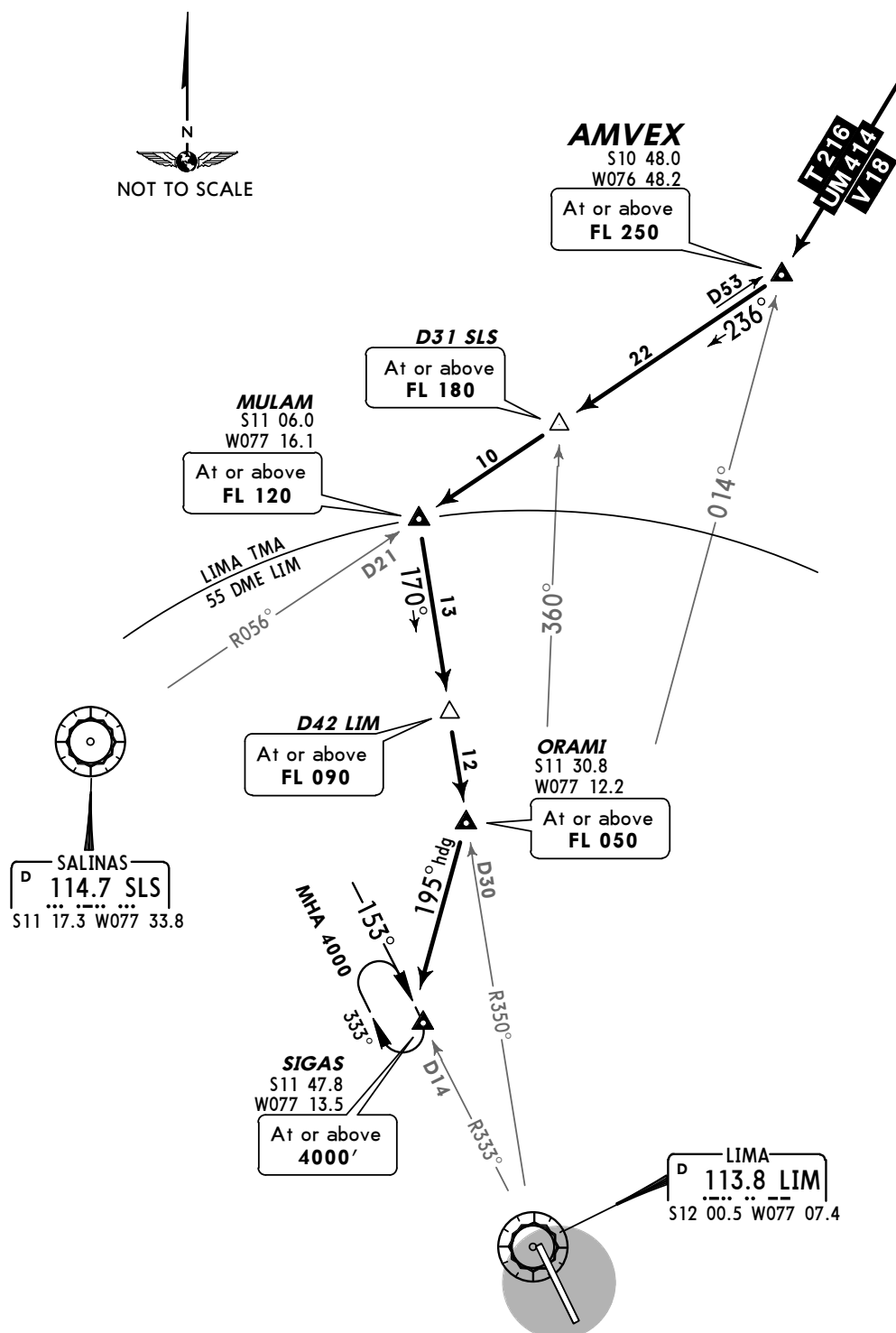
JEPPesen
15 JUL 05 **10-2C**

LIMA-CALLAO, PERU
STAR

ATIS **127.9** Apt Elev **113'** Alt Set: hPa Trans level: By ATC Trans alt: 4000'



AMVEX ONE ARRIVAL (RWY 15)



ROUTING

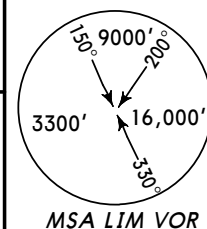
Descend from routes T-216, UM-414, or V-18. Continue on SLS R-056 (heading 236°). Turn LEFT via LIM R-350. Turn RIGHT heading 195° to intercept LIM R-333, continue to SIGAS in accordance with ATC instructions.

SPIM/LIM
JORGE CHAVEZ INTL

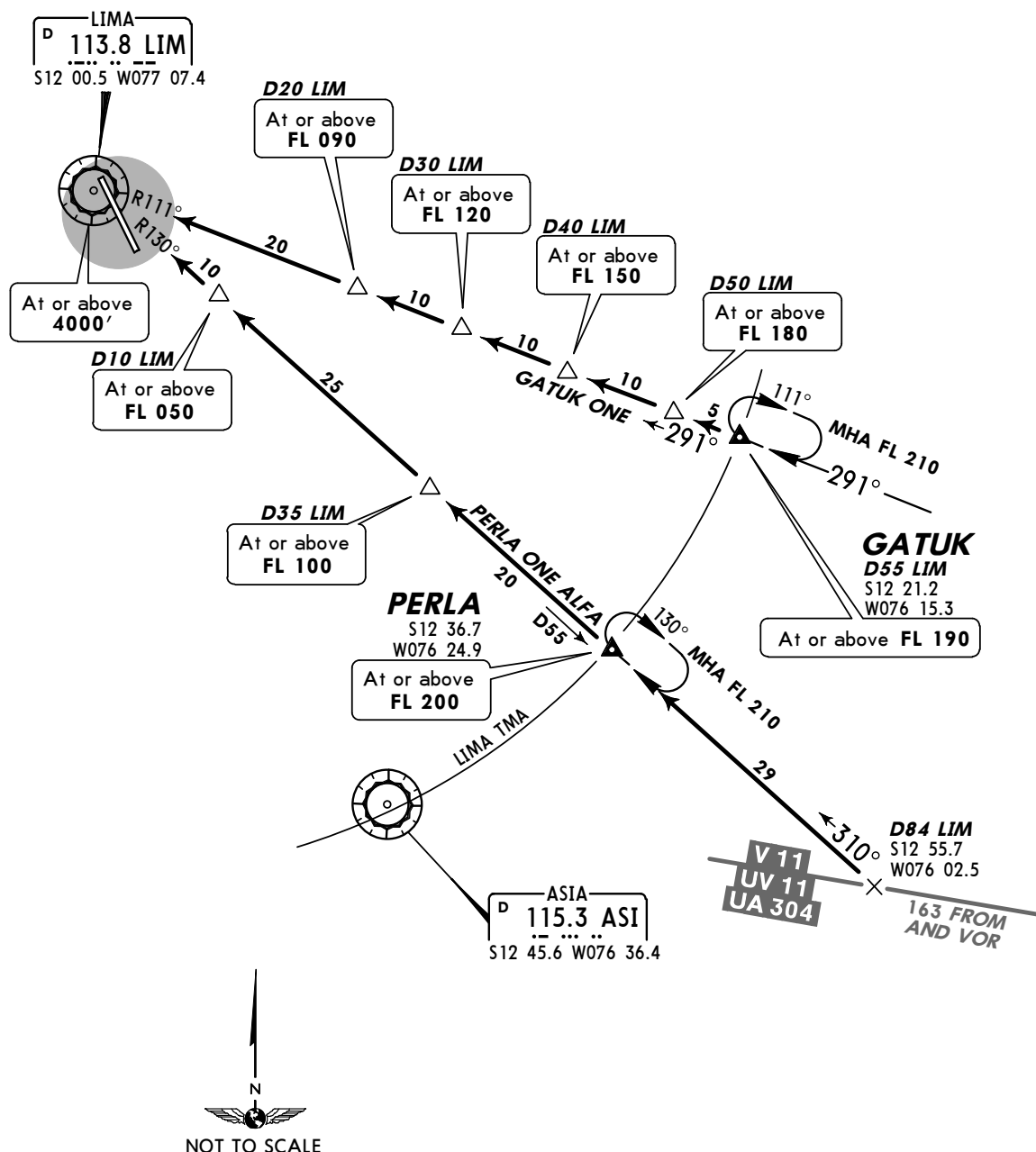
JEPPesen
28 JAN 05 **(10-2D)**

LIMA-CALLAO, PERU
STAR

ATIS **127.9** Apt Elev **113'** Alt Set: hPa Trans level: By ATC Trans alt: 4000'



GATUK ONE, PERLA ONE ALFA ARRIVALS



STAR	ROUTING
GATUK ONE	From GATUK continue descending via LIM R-111 (heading 291°) to LIM. Proceed in accordance with ATC authorization.
PERLA ONE ALFA	Descend from D84 LIM on routes UV-11, V-11, UA-304 via LIM R-130 to PERLA. Continue descending via LIM R-130 (heading 310°) to LIM. Proceed in accordance with ATC authorization.

SPIM/LIM
JORGE CHAVEZ INTL

JEPPESEN

28 JAN 05 (10-2E)

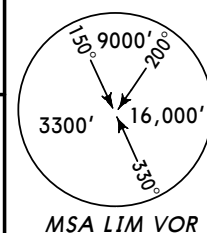
LIMA-CALLAO, PERU

STAR

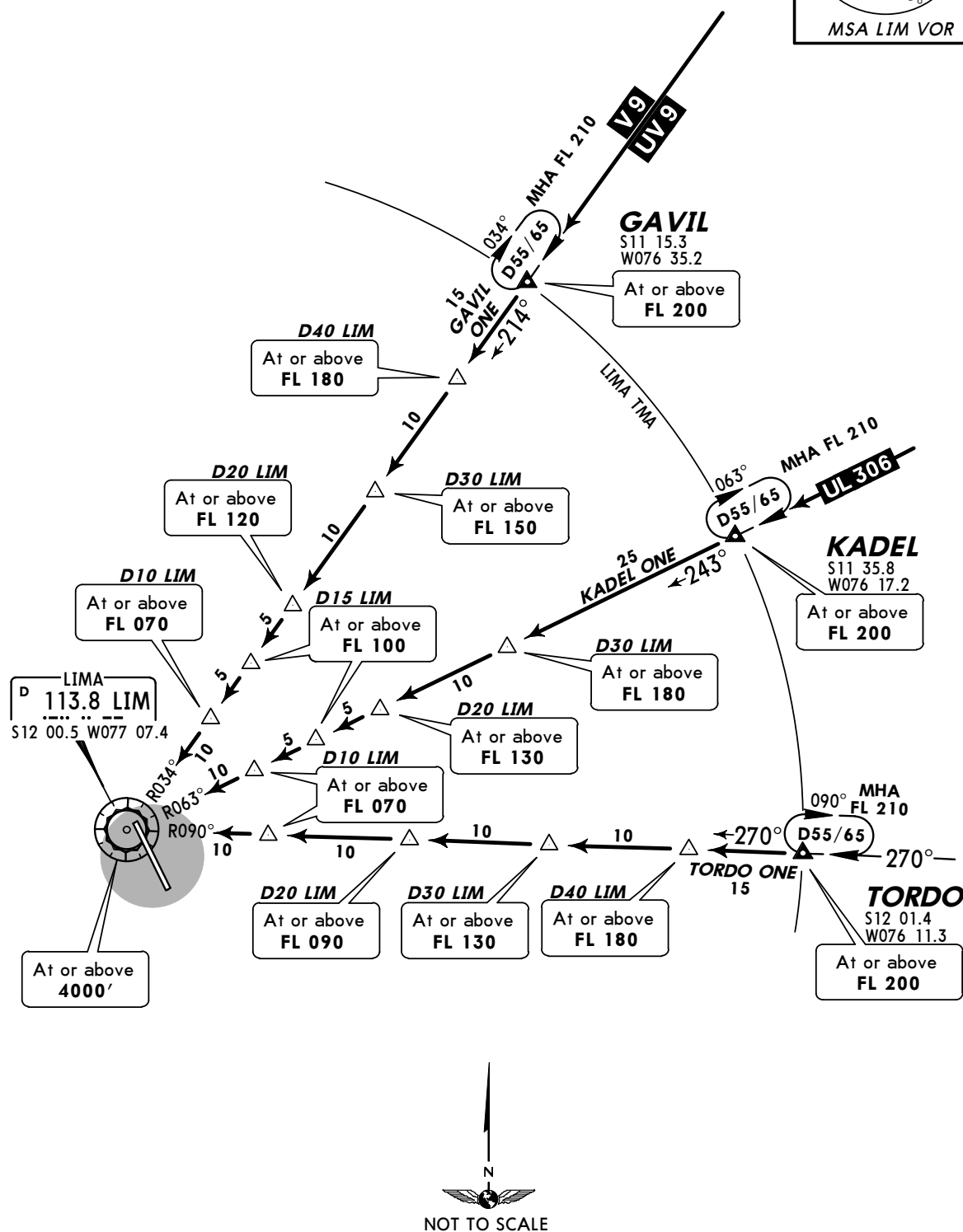
ATIS
127.9

Apt Elev
113'

Alt Set: hPa Trans level: By ATC Trans alt: 4000'



GAVIL ONE, KADEL ONE, TORDO ONE ARRIVALS



STAR	ROUTING
GAVIL ONE	From GAVIL descend via LIM R-034 (heading 214°) to LIM. Proceed according to ATC authorization.
KADEL ONE	From KADEL continue descending via LIM R-063 (heading 243°) to LIM. Proceed according to ATC authorization.
TORDO ONE	From TORDO continue descending via LIM R-090 (heading 270°) to LIM. Proceed according to ATC authorization.

SPIM/LIM
JORGE CHAVEZ INTL

JEPPesen

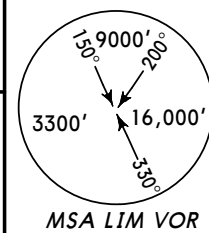
15 JUL 05 **10-3**

LIMA-CALLAO, PERU

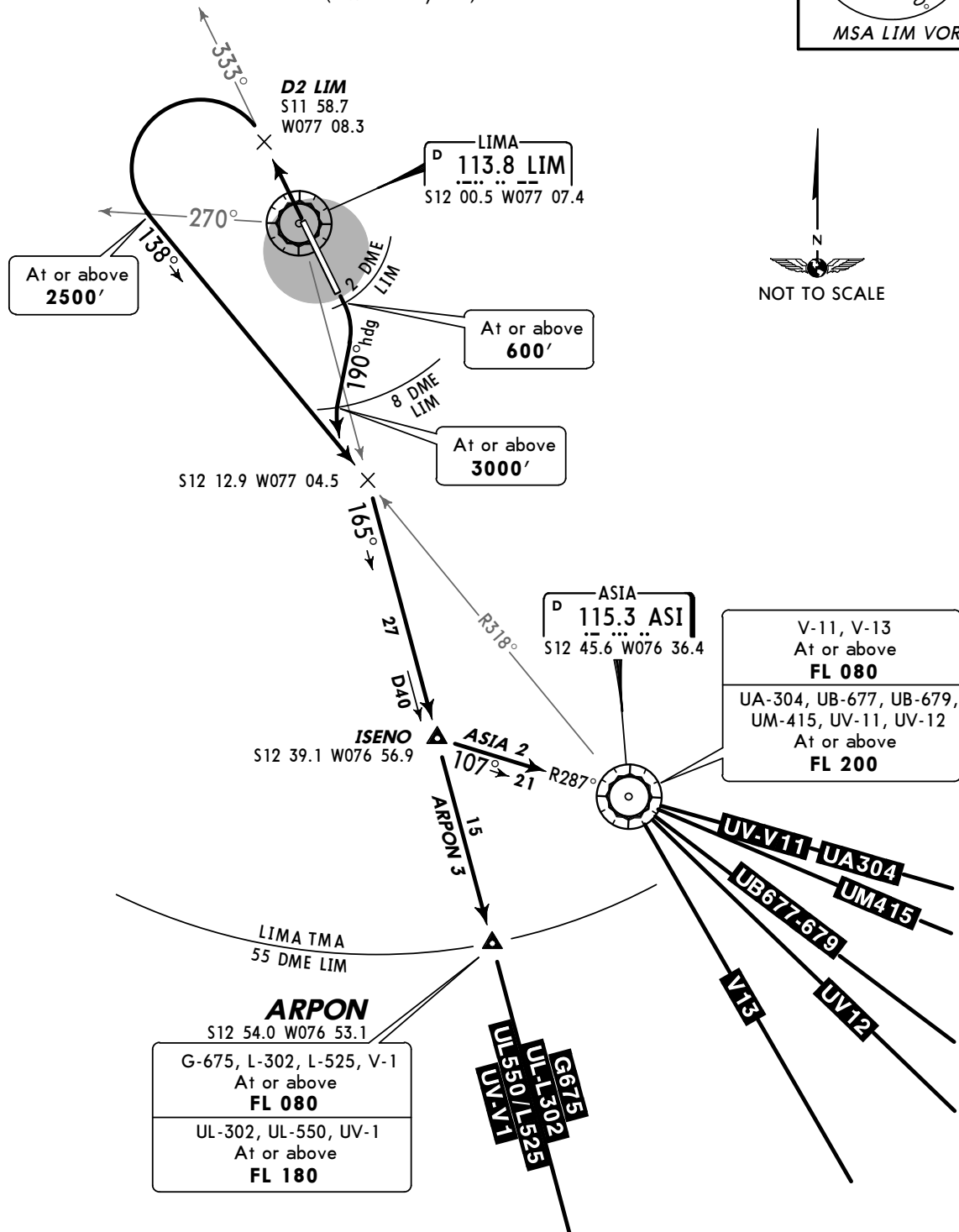
SID

Apt Elev
113'

Trans level: By ATC Trans alt: 4000'



ARPON 3, ASIA 2 DEPARTURES (RWYS 15, 33)

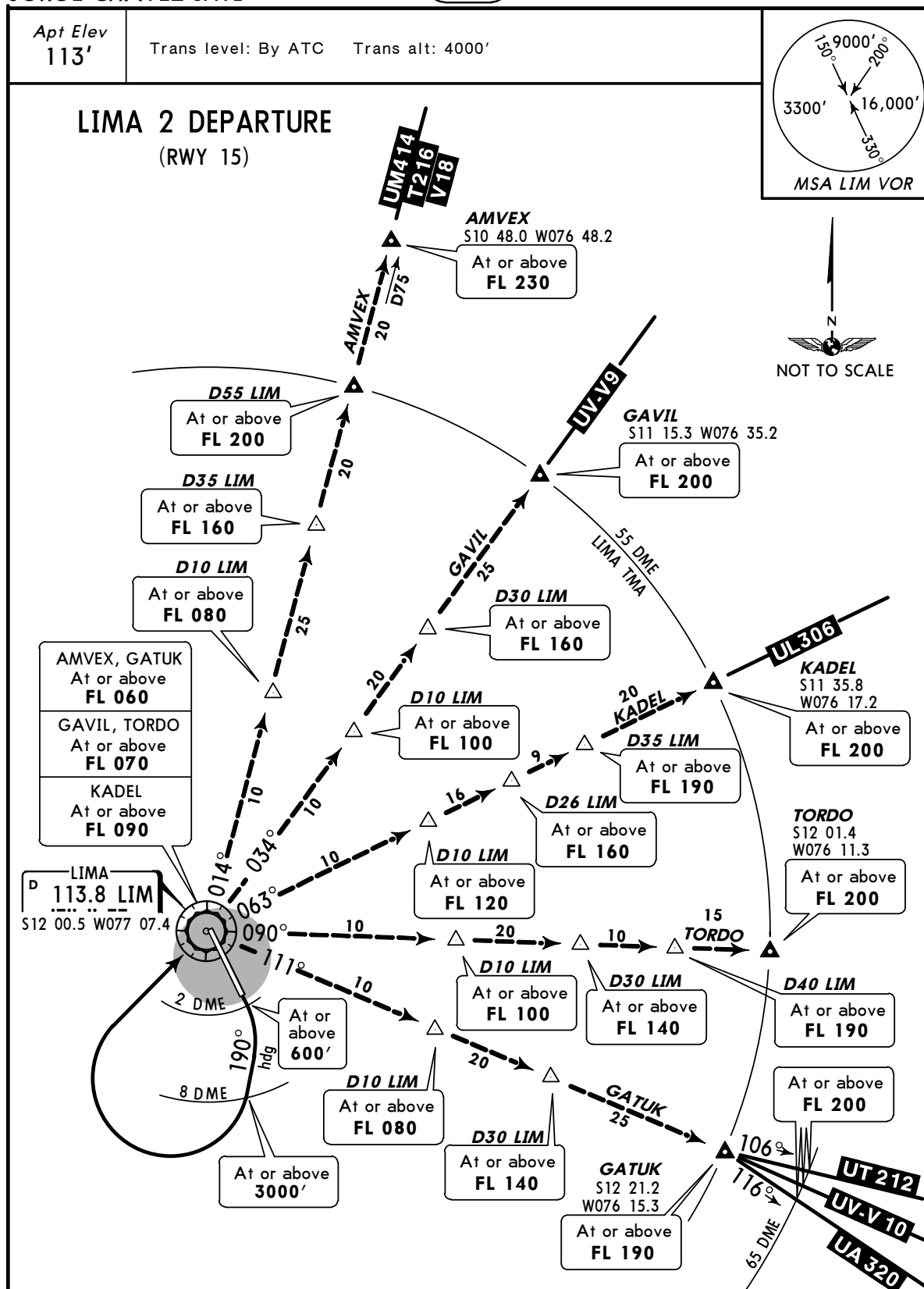


RWY	INITIAL CLIMB
15	Climb on runway heading to reach 2 DME LIM at 600' or above, then turn RIGHT on heading 190° until 8 DME LIM, turn LEFT to intercept LIM R-165.
33	Climb on runway heading to D2 LIM, turn LEFT to intercept ASI R-318 (heading 138°) to intercept and follow LIM R-165.
SID	ROUTING
ARPON 3	On LIM R-165 to ARPON, continue climb to the authorized route.
ASIA 2	Follow LIM R-165 to ISENO, turn LEFT to intercept ASI R-287 (heading 107°), continue climb to the authorized route.

SPIM/LIM
JORGE CHAVEZ INTL

JEPPESEN
15 JUL 05 (10-3A)

LIMA-CALLAO, PERU
SID

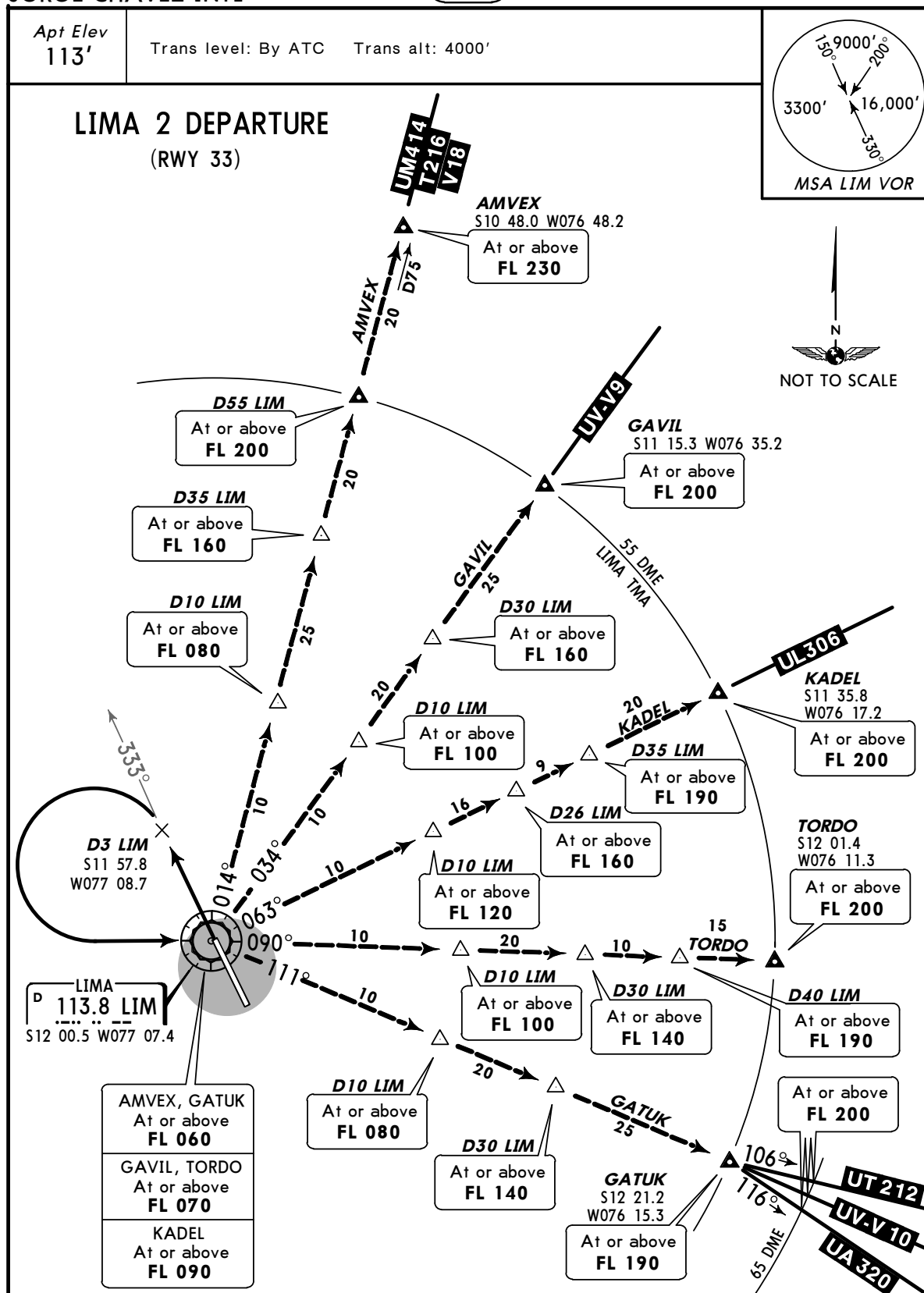


INITIAL CLIMB	
Climb on runway heading to reach 2 DME LIM at 600' or above, turn RIGHT climb on heading 190° to 8 DME LIM, then turn RIGHT climbing to LIM, continue via authorized transition.	
TRANSITIONS	
AMVEX	Via LIM R-014 continue climb on the authorized route.
GAVIL	Via LIM R-034 continue climb on the authorized route.
GATUK	Via LIM R-111 continue climb on the authorized routes UA-320, UT-212 and U/V-10.
KADEL	Via LIM R-063 continue climb on the authorized route.
TORDO	Via LIM R-090 continue climb on the authorized route.

SPIM/LIM
JORGE CHAVEZ INTL

JEPPesen
15 JUL 05 **(10-3B)**

LIMA-CALLAO, PERU
SID



INITIAL CLIMB

Climb on runway heading to D3 LIM, turn LEFT climbing to LIM, continue via authorized transition.

TRANSITIONS

AMVEX	Via LIM R-014 continue climb on the authorized route.
GAVIL	Via LIM R-034 continue climb on the authorized route.
GATUK	Via LIM R-111 continue climb on the authorized routes UA-320, UT-212 and U/V-10.
KADEL	Via LIM R-063 continue climb on the authorized route.
TORDO	Via LIM R-090 continue climb on the authorized route.

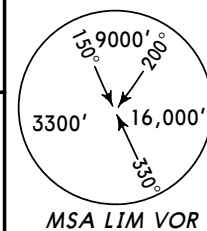
SPIM/LIM
JORGE CHAVEZ INTL

JEPPesen
15 JUL 05 **10-3C**

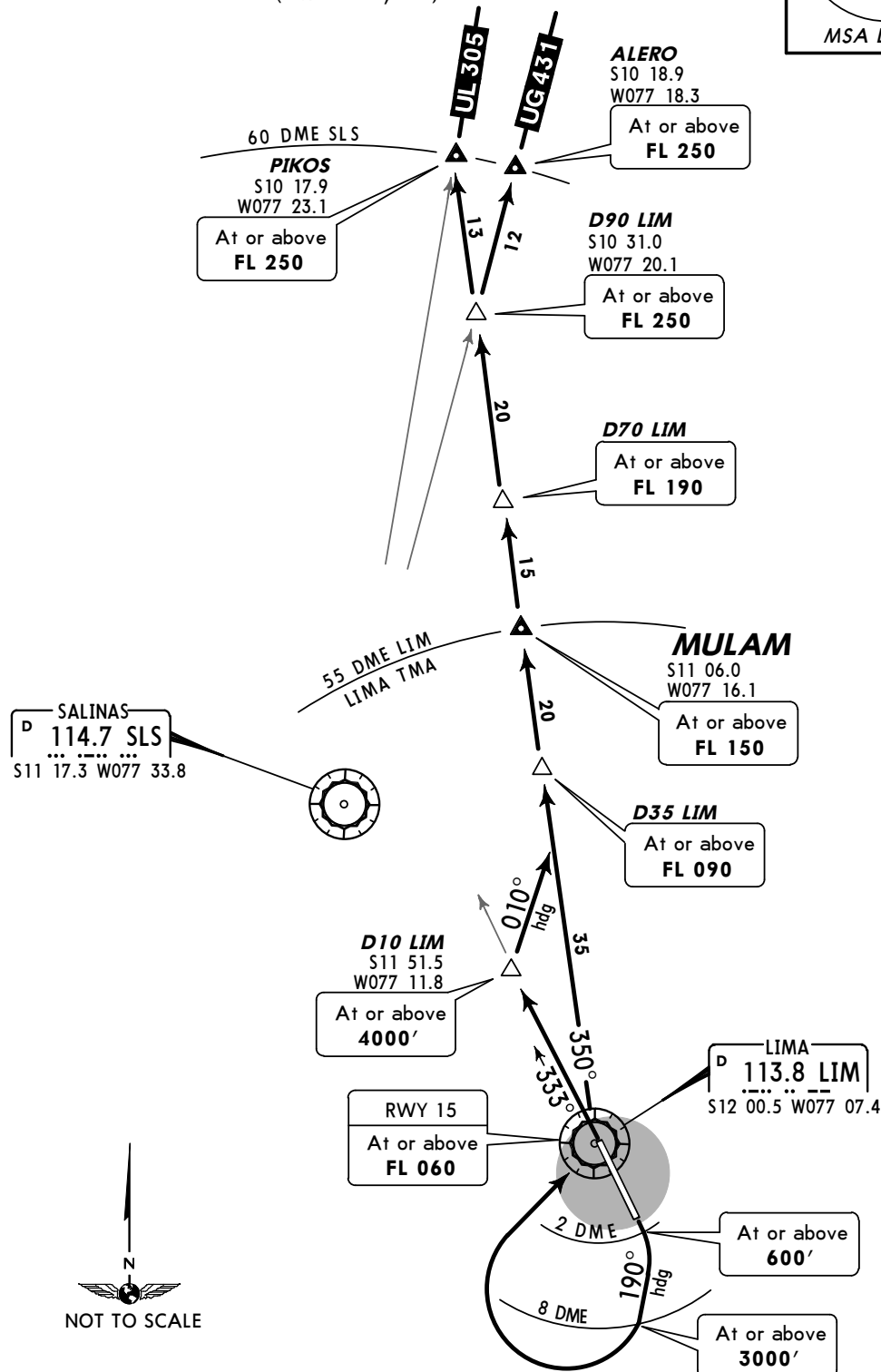
LIMA-CALLAO, PERU
SID

Apt Elev
113'

Trans level: By ATC Trans alt: 4000'



MULAM 1 DEPARTURE (RWYS 15, 33)



RWY	INITIAL CLIMB
15	Climb on runway heading to reach 2 DME LIM at 600' or above, then turn RIGHT climbing on heading 190° until 8 DME LIM, turn RIGHT climbing to LIM, continue climbing on LIM R-350.
33	Climb on runway heading to D10 LIM, turn RIGHT on heading 010° climbing to intercept LIM R-350.
ROUTING	
Continue on the authorized route.	

SPIM/LIM
JORGE CHAVEZ INTL

JEPPESEN

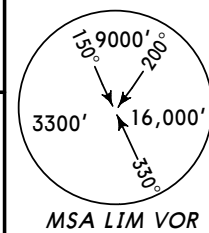
27 AUG 04 (10-3D)

LIMA-CALLAO, PERU

SID

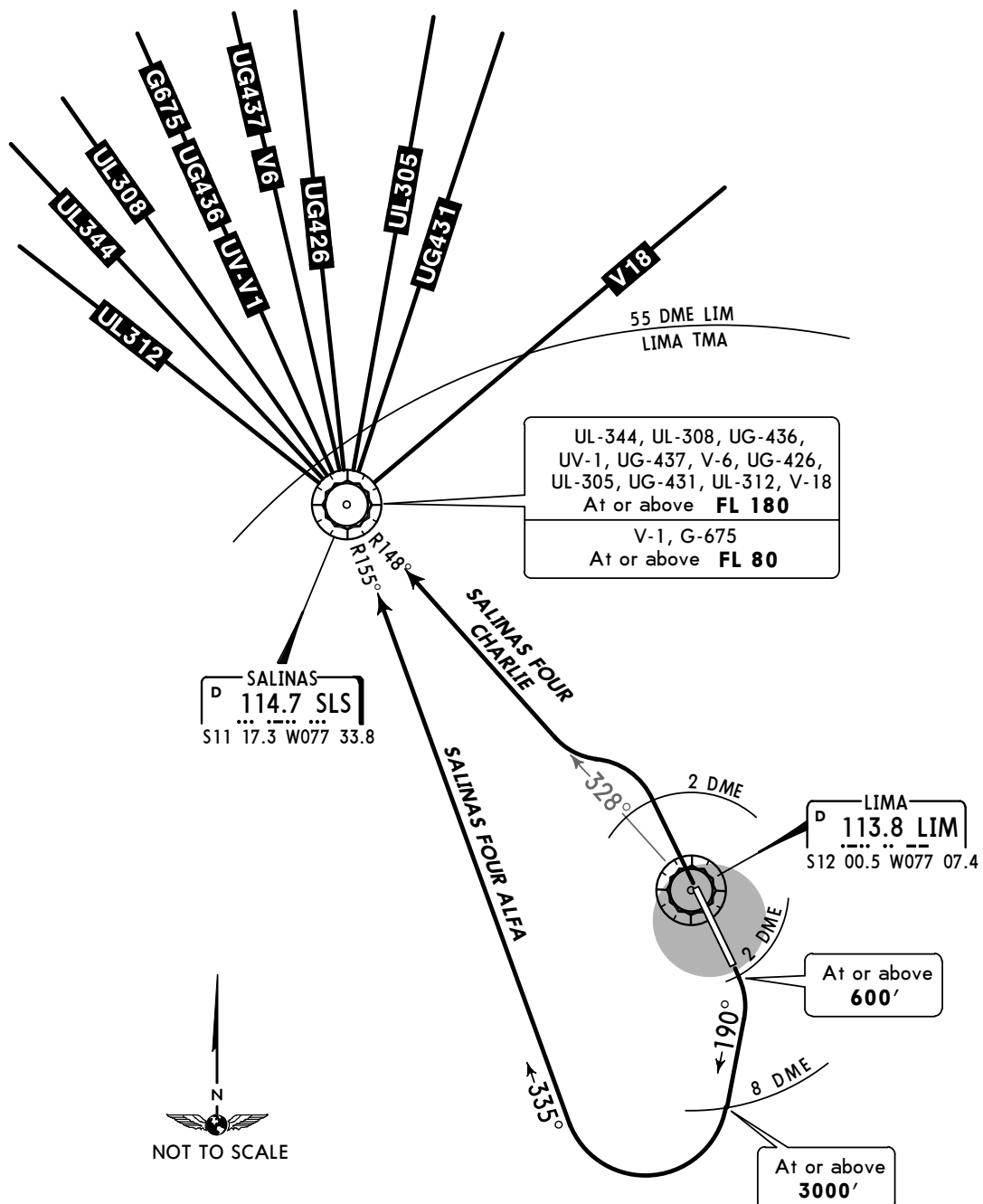
Apt Elev
113'

Trans level: BY ATC Trans alt: 4000'



SALINAS FOUR ALFA, SALINAS FOUR CHARLIE DEPARTURES

(RWYS 15, 33)



SPIM/LIM
JORGE CHAVEZ INTL

JEPPESEN

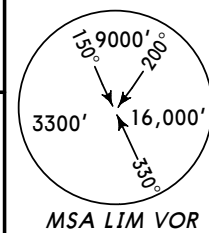
27 AUG 04 (10-3E)

LIMA-CALLAO, PERU

SID

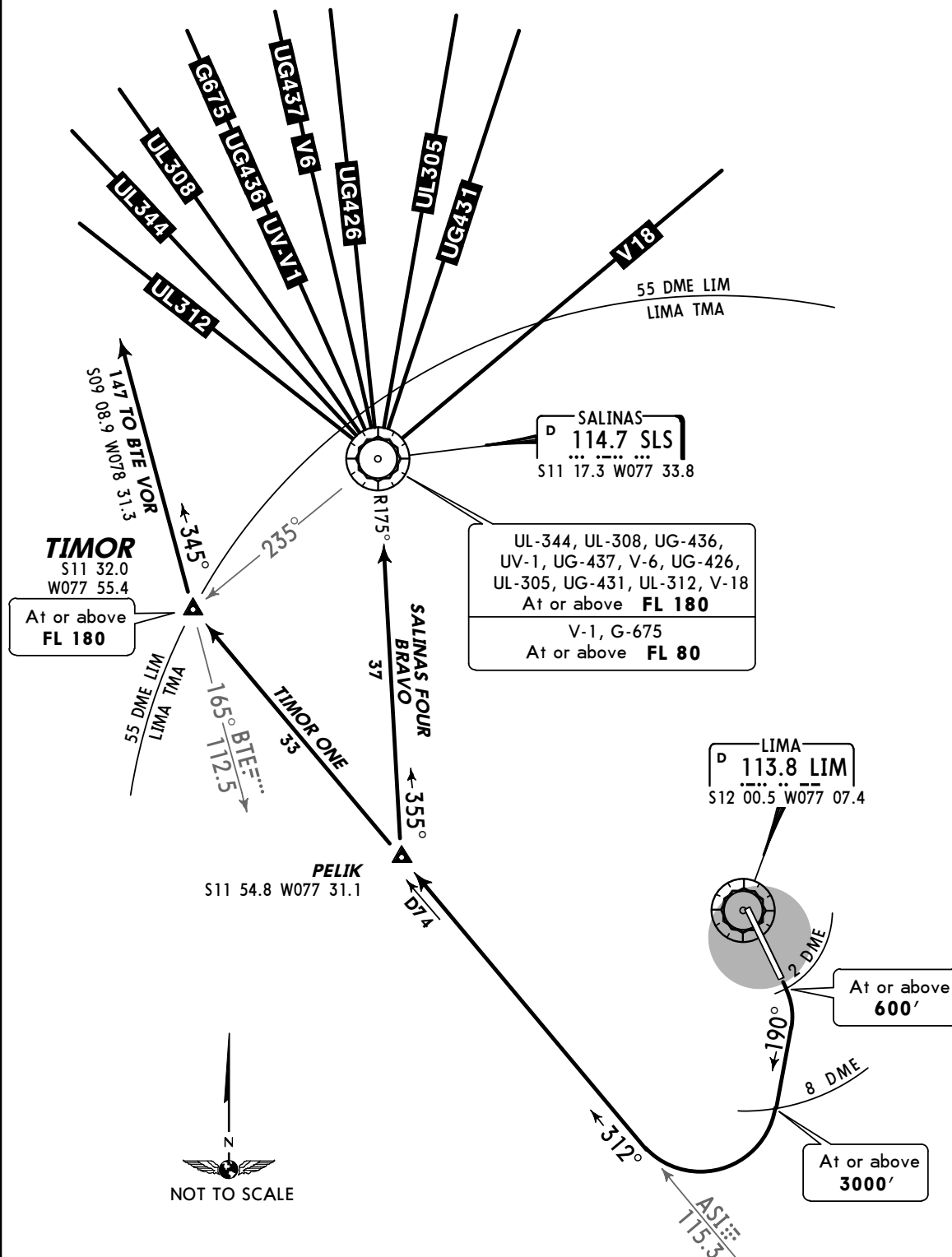
Apt Elev
113'

Trans level: BY ATC Trans alt: 4000'



SALINAS FOUR BRAVO, TIMOR ONE DEPARTURES

(RWY 15)



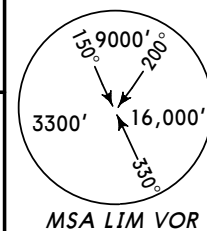
SPIM/LIM
JORGE CHAVEZ INTL

JEPPESEN
15 JUL 05 **(10-3F)**

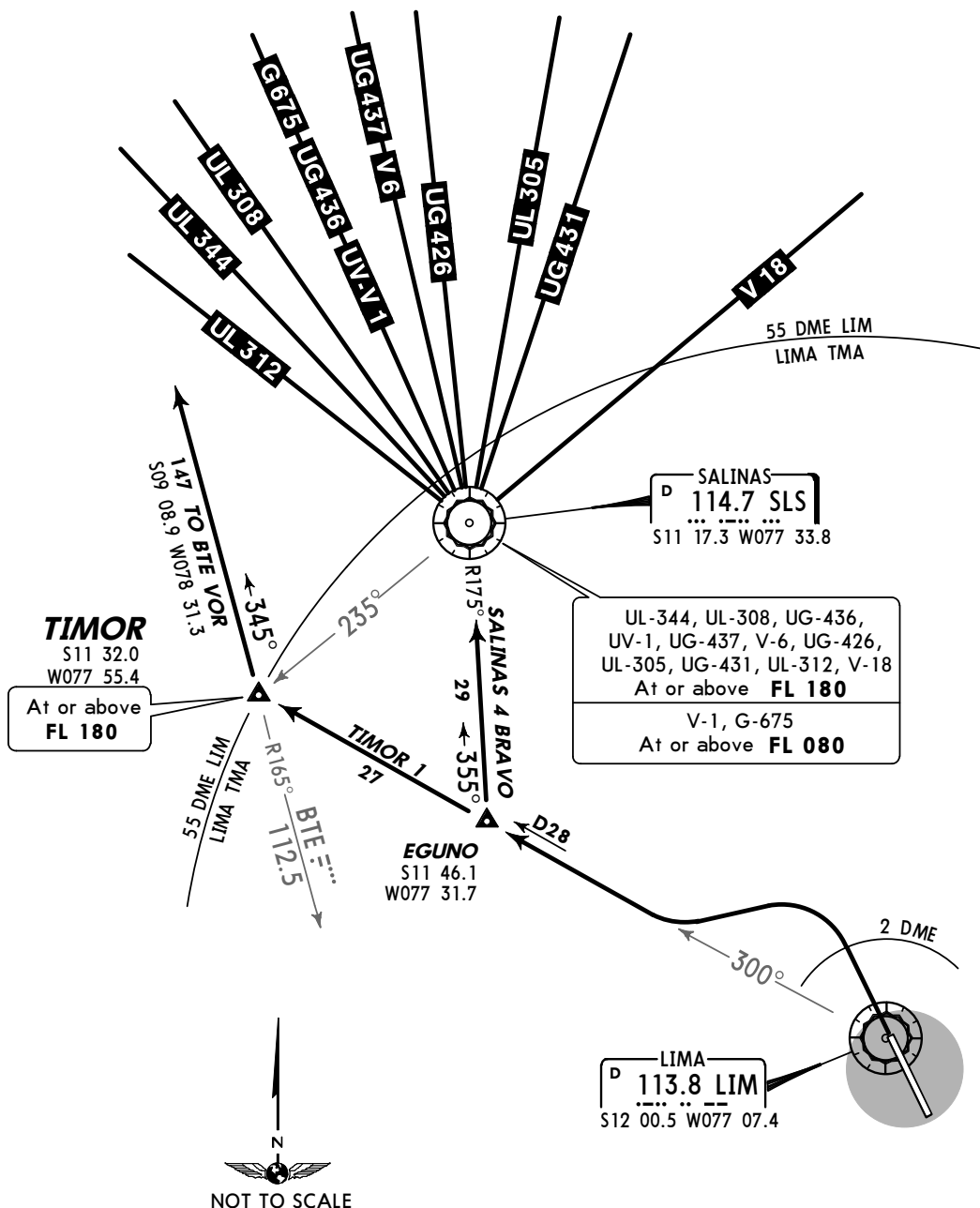
LIMA-CALLAO, PERU
SID

Apt Elev
113'

Trans level: By ATC Trans alt: 4000'



SALINAS 4 BRAVO, TIMOR 1
DEPARTURES
(RWY 33)



INITIAL CLIMB

Climb on runway heading to 2 DME LIM, turn LEFT to intercept and proceed on LIM R-300.

SID	ROUTING
SALINAS 4 BRAVO	From EGUNO turn RIGHT to intercept and proceed on SLS R-175 (heading 355°), then continue climb to the authorized route.
TIMOR 1	From EGUNO proceed on LIM R-300, turn RIGHT to intercept and proceed on BTE R-165 (heading 345°), continue climb to the authorized route.

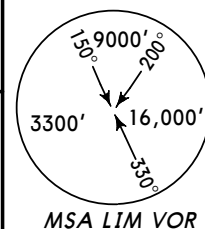
SPIM/LIM
JORGE CHAVEZ INTL

JEPPESEN
15 JUL 05 **(10-3G)**

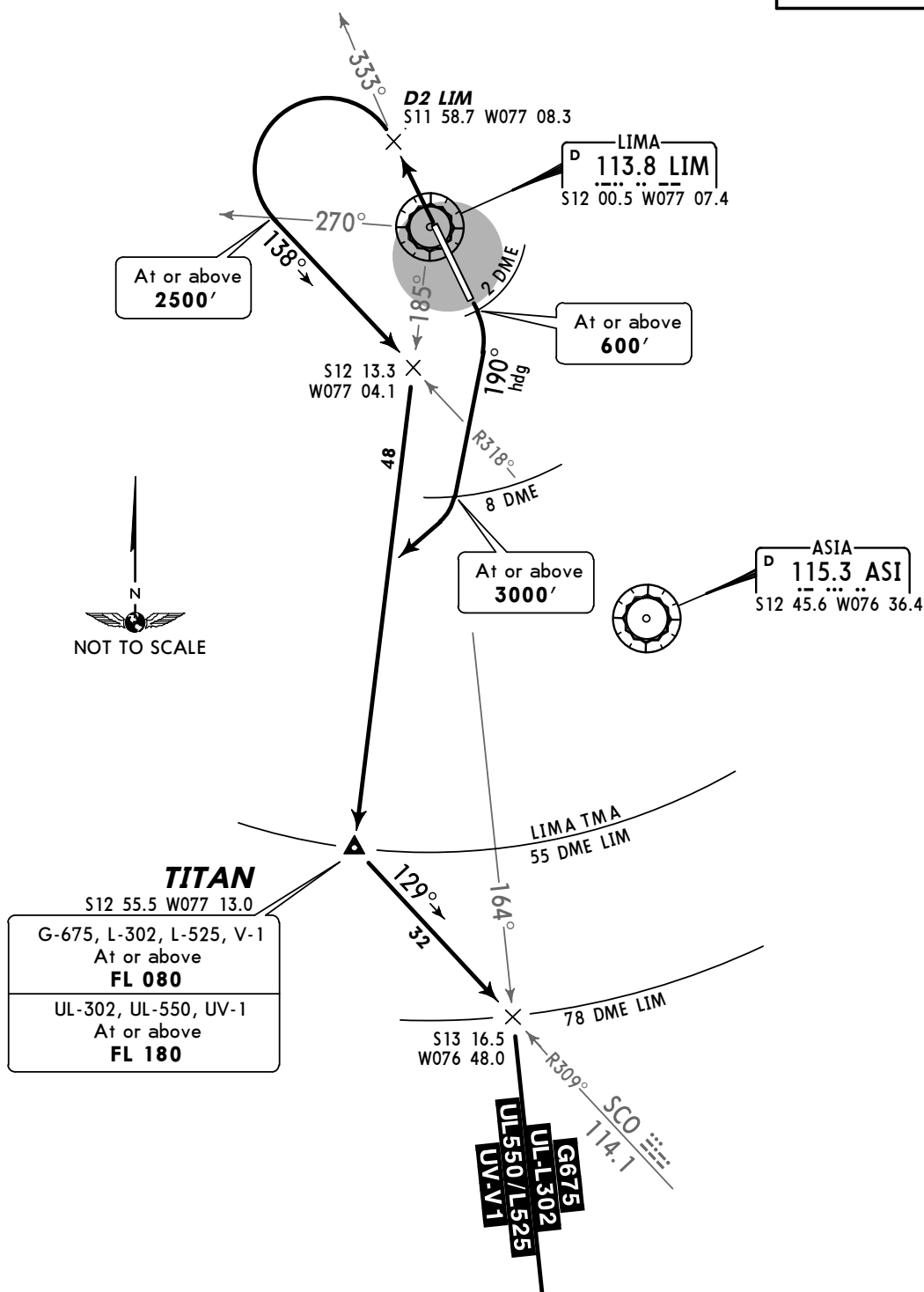
LIMA-CALLAO, PERU
SID

Apt Elev
113'

Trans level: By ATC Trans alt: 4000'



TITAN 3 DEPARTURE (RWYS 15, 33)



RWY	INITIAL CLIMB
15	Climb on runway heading to reach 2 DME LIM at 600' or above, then turn RIGHT climbing on heading 190° until 8 DME LIM, intercept LIM R-185.
33	Climb on runway heading to D2 LIM, turn LEFT to intercept ASI R-318 (heading 138°), then intercept and follow LIM R-185.
ROUTING	
From TITAN turn LEFT on SCO R-309 (heading 129°), continue climb to intercept the authorized route.	

Notice: After 07/12/2006 0901Z this chart should not be used without first checking JeppView or NOTAMs.

SPIM/LIM
Apt Elev **113'**
S12 01.3 W077 06.9

JEPPesen

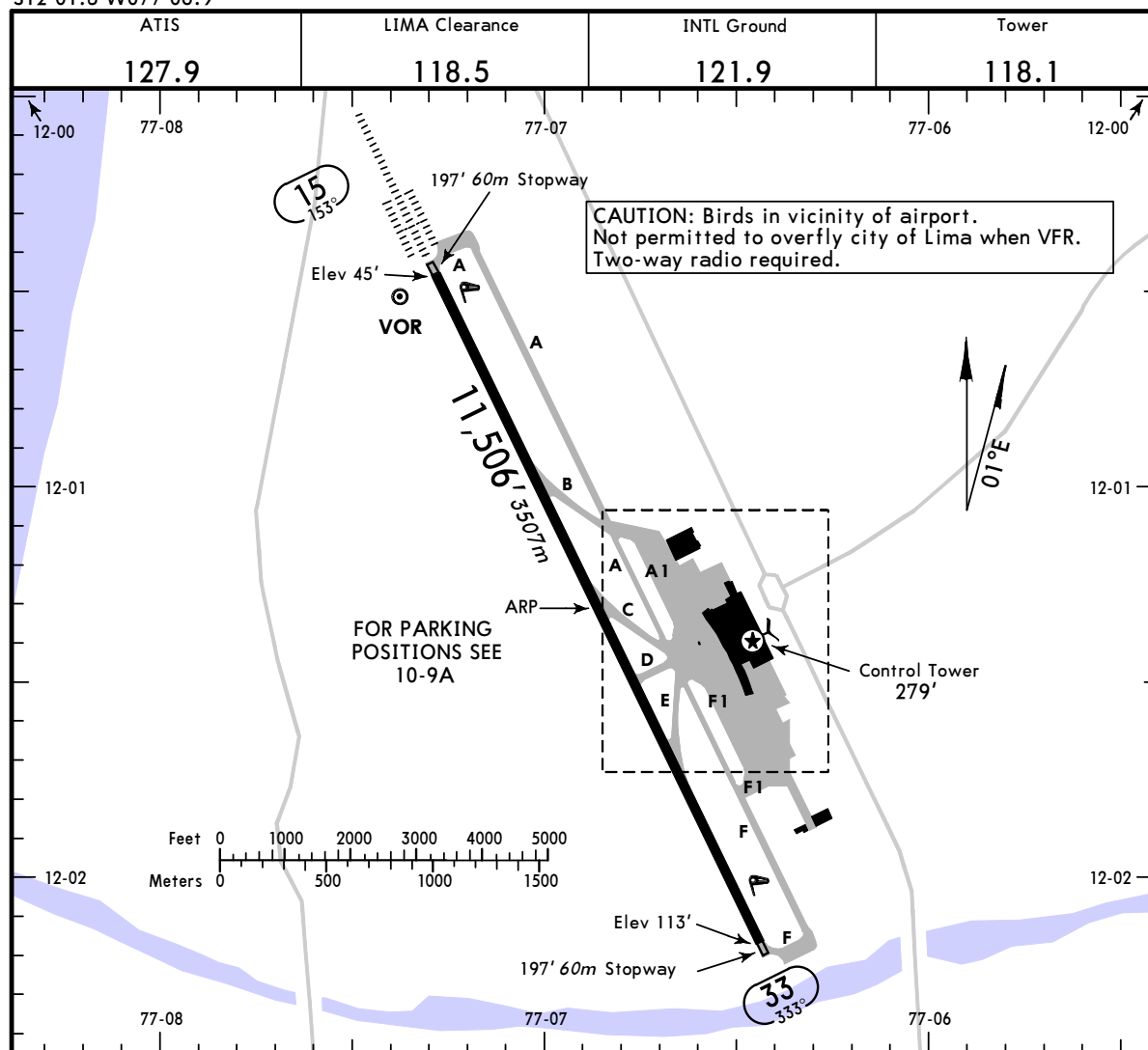
29 JUL 05

(10-9)

Eff 4 Aug

LIMA-CALLAO, PERU

JORGE CHAVEZ INTL



ADDITIONAL RUNWAY INFORMATION

RWY		USABLE LENGTHS			
		LANDING BEYOND		TAKE-OFF	WIDTH
		Threshold	Glide Slope		
15	HIRL CL HIALS PAPI-L (angle 3.0°)				148'
33	HIRL CL REIL PAPI-L (angle 3.0°)				45m

1 TAKE-OFF

	All Rwys			Other
	Take-Off Alternate Apt. Filed			
	RL and CL	RL or CL		
2 Eng	1 hr alternate (1 eng inop) 600m		Available Landing Minimums	
3 & 4 Eng	2 hr alternate (1 eng inop) 600m			

1 Minimum climb gradient for Rwy 15: 5.1%, Rwy 33: 4.5%.

Notice: After 07/12/2006 0901Z this chart should not be used without first checking JeppView or NOTAMs.

SPIM/LIM

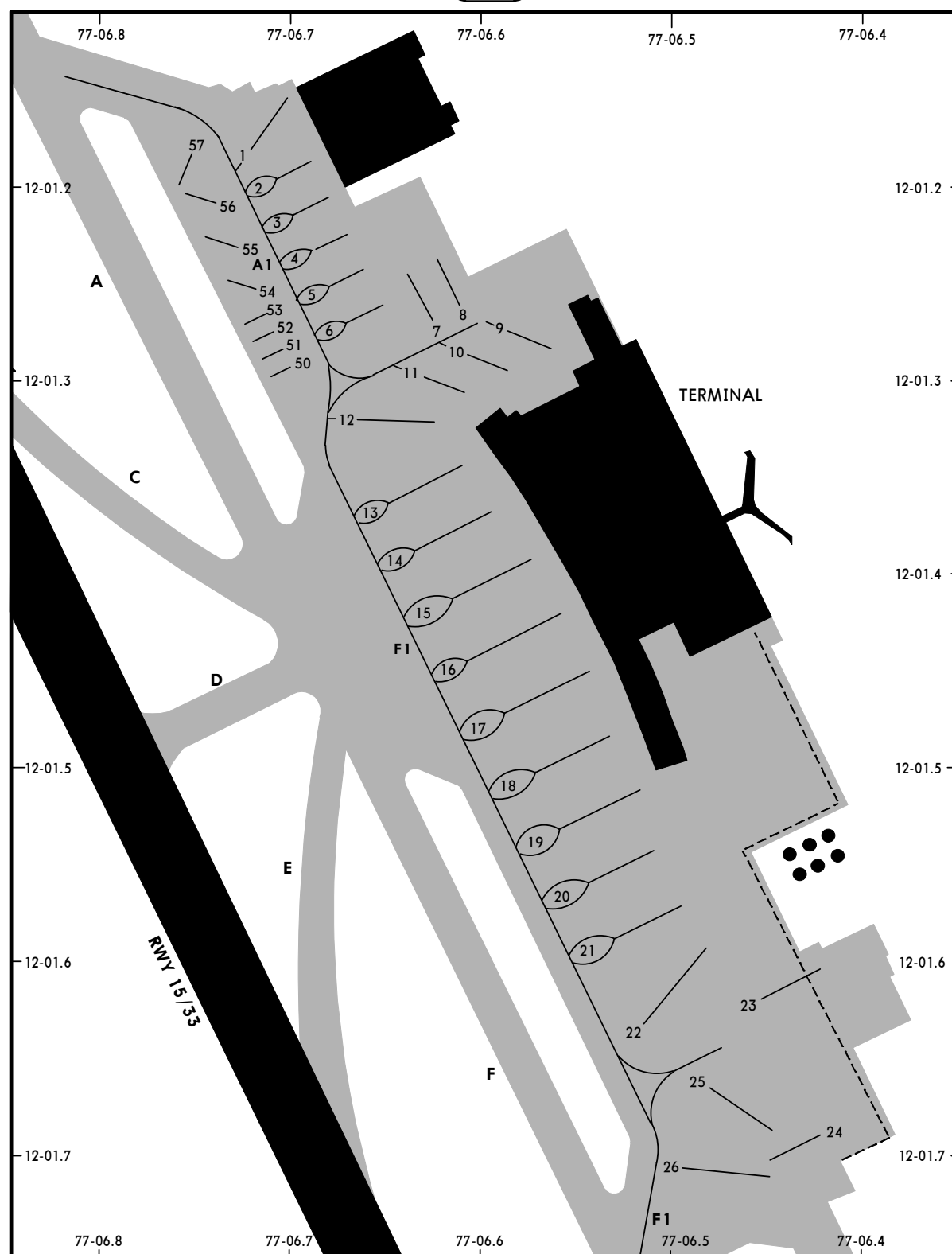
JEPPESEN

29 JUL 05

10-9A

Eff 4 Aug

LIMA-CALLAO, PERU
JORGE CHAVEZ INTL



PARKING STAND COORDINATES

STAND No.	COORDINATES	STAND No.	COORDINATES
1 thru 5	S12 01.2 W077 06.7	50 thru 54	S12 01.3 W077 06.7
6	S12 01.3 W077 06.7	55	S12 01.2 W077 06.7
7, 8	S12 01.2 W077 06.6	56, 57	S12 01.2 W077 06.8
9 thru 13	S12 01.3 W077 06.6		
14, 15, 16	S12 01.4 W077 06.6		
17 thru 20	S12 01.5 W077 06.5		
21, 22	S12 01.6 W077 06.5		
23	S12 01.6 W077 06.4		
24, 25, 26	S12 01.7 W077 06.5		

CHANGES: None.

© JEPPESEN SANDERSON, INC., 2003, 2005. ALL RIGHTS RESERVED.

Notice: After 07/12/2006 0901Z this chart should not be used without first checking JeppView or NOTAMS.

SPIM/LIM

JORGE CHAVEZ INTL

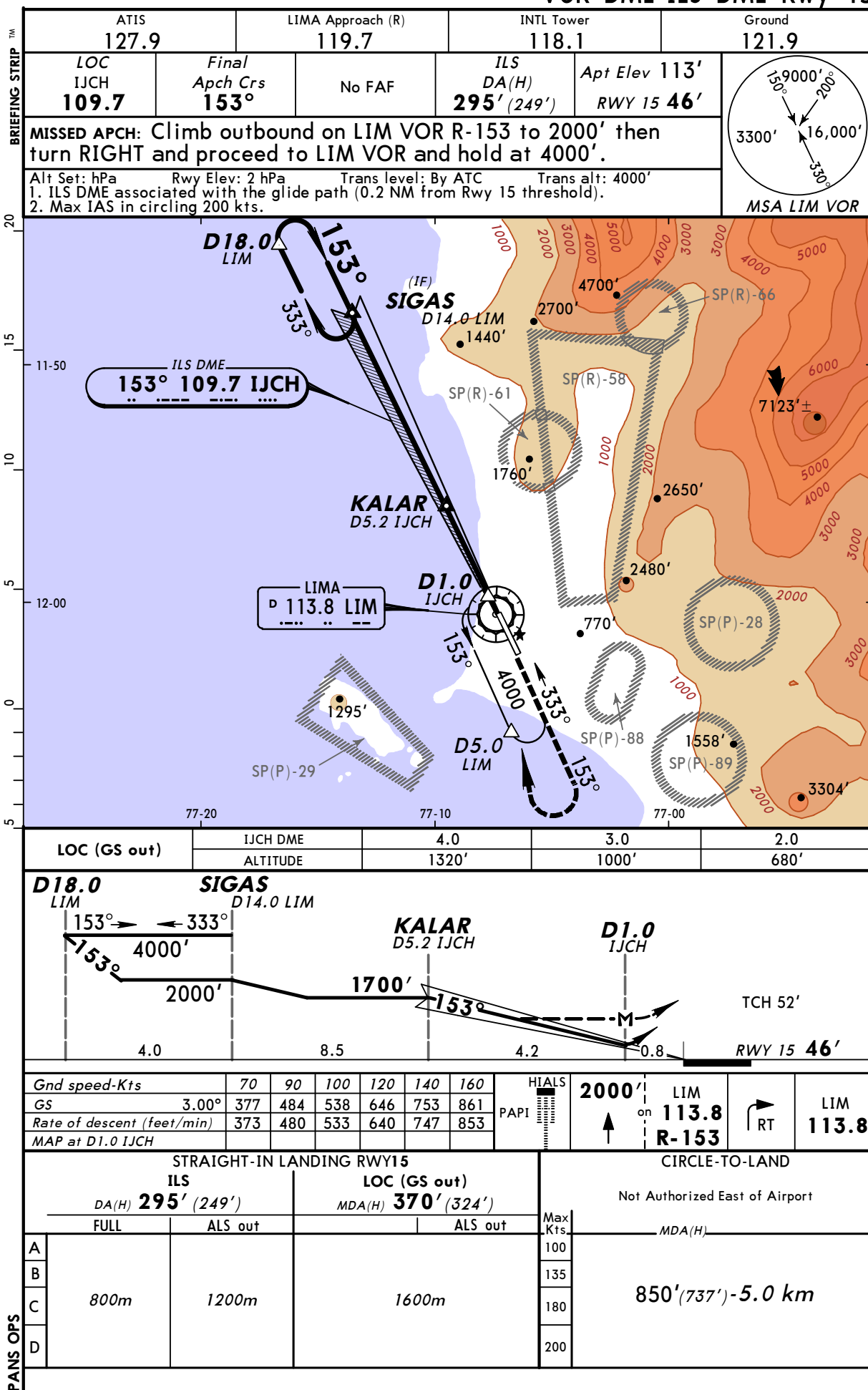
JEPPESEN

7 NOV 03 (11-1)

LIMA-CALLAO, PERU

DESCENT WHISKEY

VOR DME-ILS DME Rwy 15



VOR DME-ILS DME Rwy 15

BRIFFING STRIP™

5

© JEPPESEN SANDERSON, INC., 2001, 2002. ALL RIGHTS RESERVED.

Notice: After 07/12/2006 0901Z this chart should not be used without first checking JeppView or NOTAMS.

SPIM/LIM

JEPPESEN

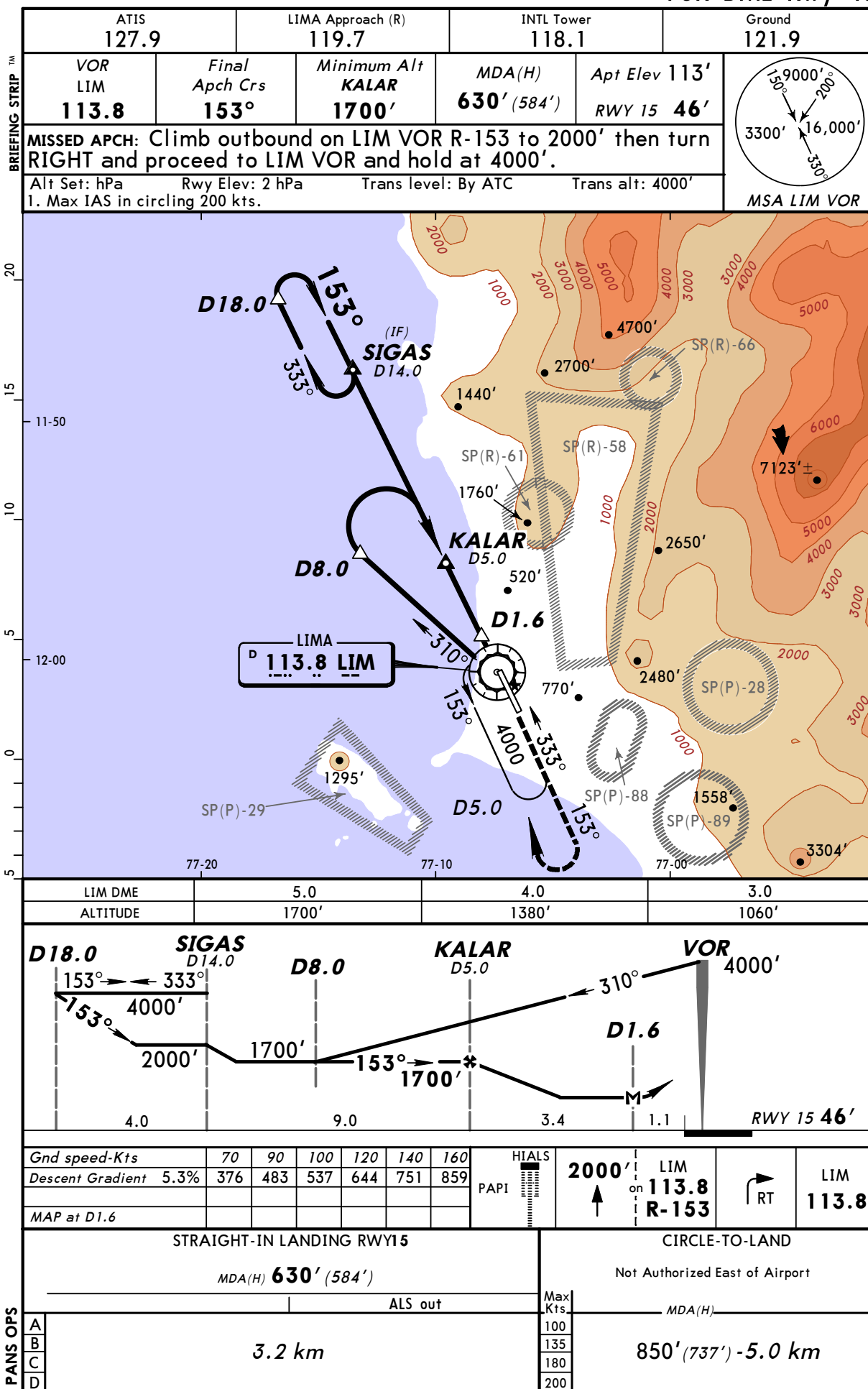
LIMA-CALLAO, PERU
DESCENT TANGO
VOR DME Rwy 15

JORGE CHAVEZ INTL

25 OCT 02

13-1

Eff 31 Oct



CHANGES: Procedure ident, airspace.

© JEPPESEN SANDERSON, INC., 2001, 2002. ALL RIGHTS RESERVED.

SPIM/LIM

JEPPESEN


LIMA-CALLAO, PERU

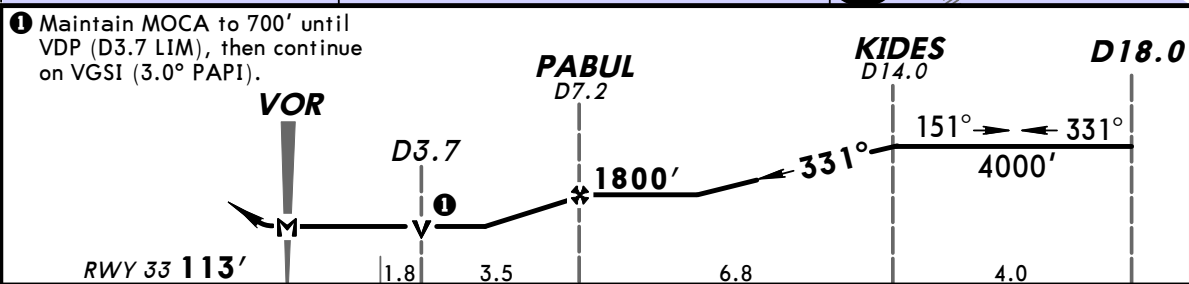
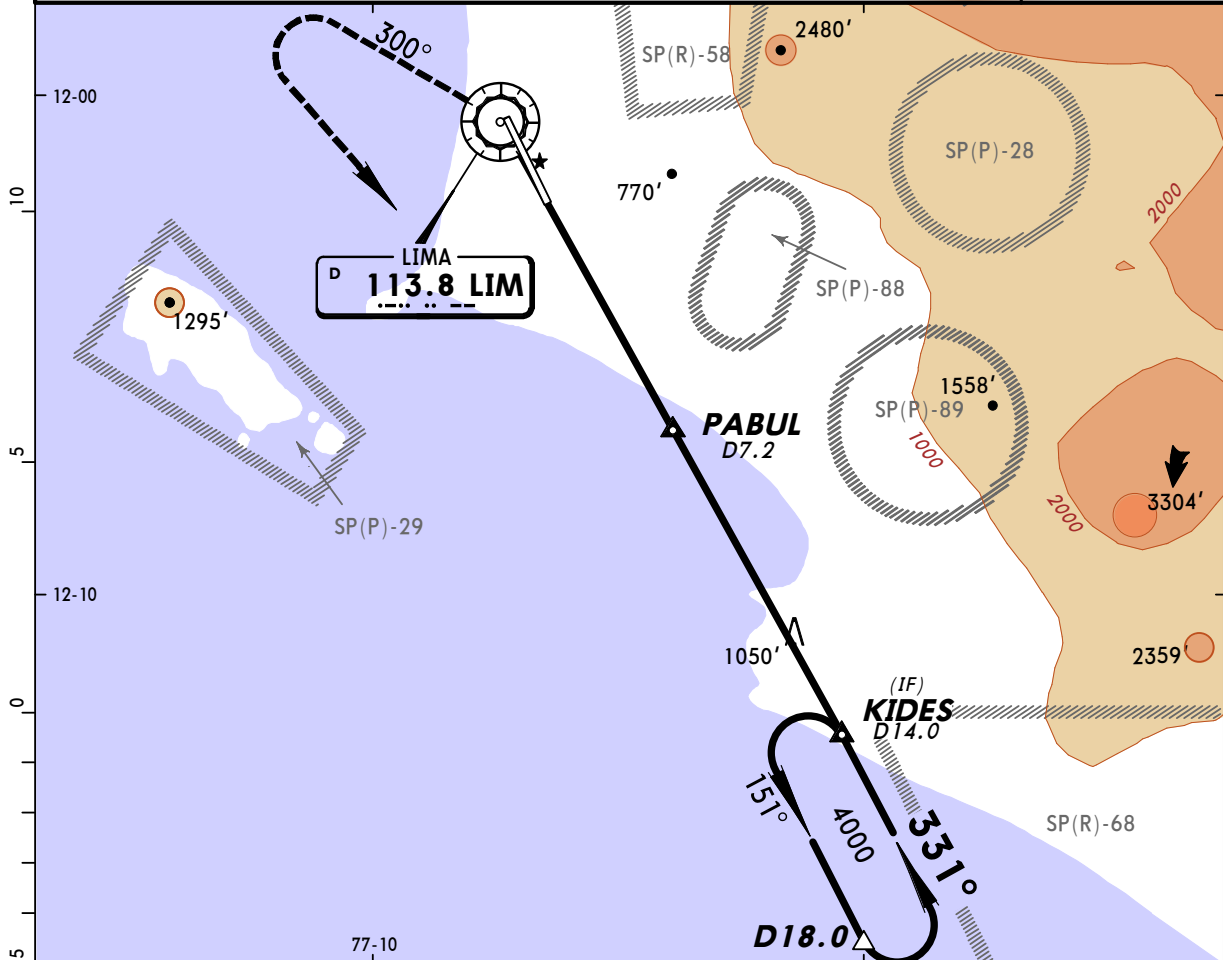
JORGE CHAVEZ INTL

25 OCT 02 13-2 Eff 31 Oct

DESCENT ALFA

VOR DME Rwy 33

BRIEFING STRIP™	ATIS 127.9		LIMA Approach (R) 119.7		INTL Tower 118.1		Ground 121.9	
	VOR LIM 113.8	Final Apch Crs 331°	Minimum Alt PABUL 1800'	MDA(H) 700' (587')	Apt Elev 113' RWY 33 113'			
	MISSED APCH: Climb outbound on LIM VOR R-300 to 2500' then turn LEFT to KIDES INT and hold.							
	Alt Set: hPa Rwy Elev: 4 hPa Trans level: By ATC Trans alt: 4000' 1. Max IAS in circling 200 kts.							



				REIL PAPI-L	2500'	LIM on 113.8 R-300	LT	to KIDES
MAP at VOR								

STRAIGHT-IN LANDING RWY33				CIRCLE-TO-LAND			
MDA(H) 700' (587')				Not Authorized East of Airport			
ALS out				Max Kts	MDA(H)		
4.0 km				100	1000' (887') -5.0 km		
				135			
				180	1200' (1087') -5.0 km		
				200			

CHANGES: New procedure.

© JEPPESEN SANDERSON, INC. 2002. ALL RIGHTS RESERVED.