

JEPPesen

25 OCT 02

10-2

Eff 31 Oct

STAR

CHICLAYO, PERU  
CAP. FAP JOSE A. QUINONES

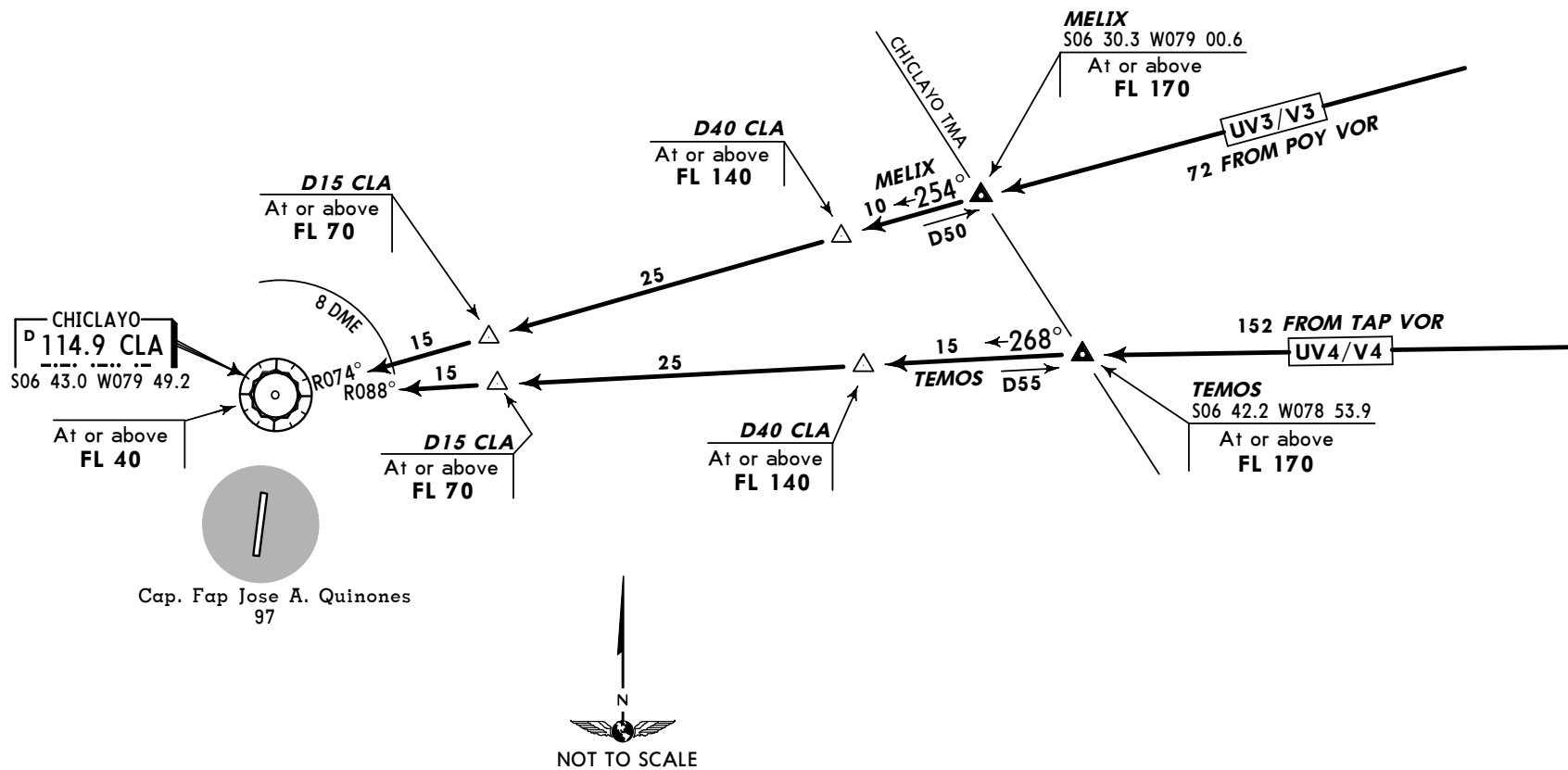
TRANS LEVEL: FL 40  
TRANS ALT: 3000'

## MELIX-TEMOS ARRIVALS

### MELIX-TEMOS ARRIVALS

**MELIX:** Descend from route UV3/V3 to cross: Melix Int (CLA R-074/D50) at or above FL 170, D40 CLA at or above FL 140, D15 CLA at or above FL 70, CLA VOR at or above FL 40, and proceed in accordance with ATC authorization.

**TEMOS:** Descend from route UV4/V4 to cross: Temos Int (CLA R-088/D55) at or above FL 170, D40 CLA at or above FL 140, D15 CLA at or above FL 70, CLA VOR at or above FL 40, and proceed in accordance with ATC authorization.



JEPPesen

25 OCT 02

10-3

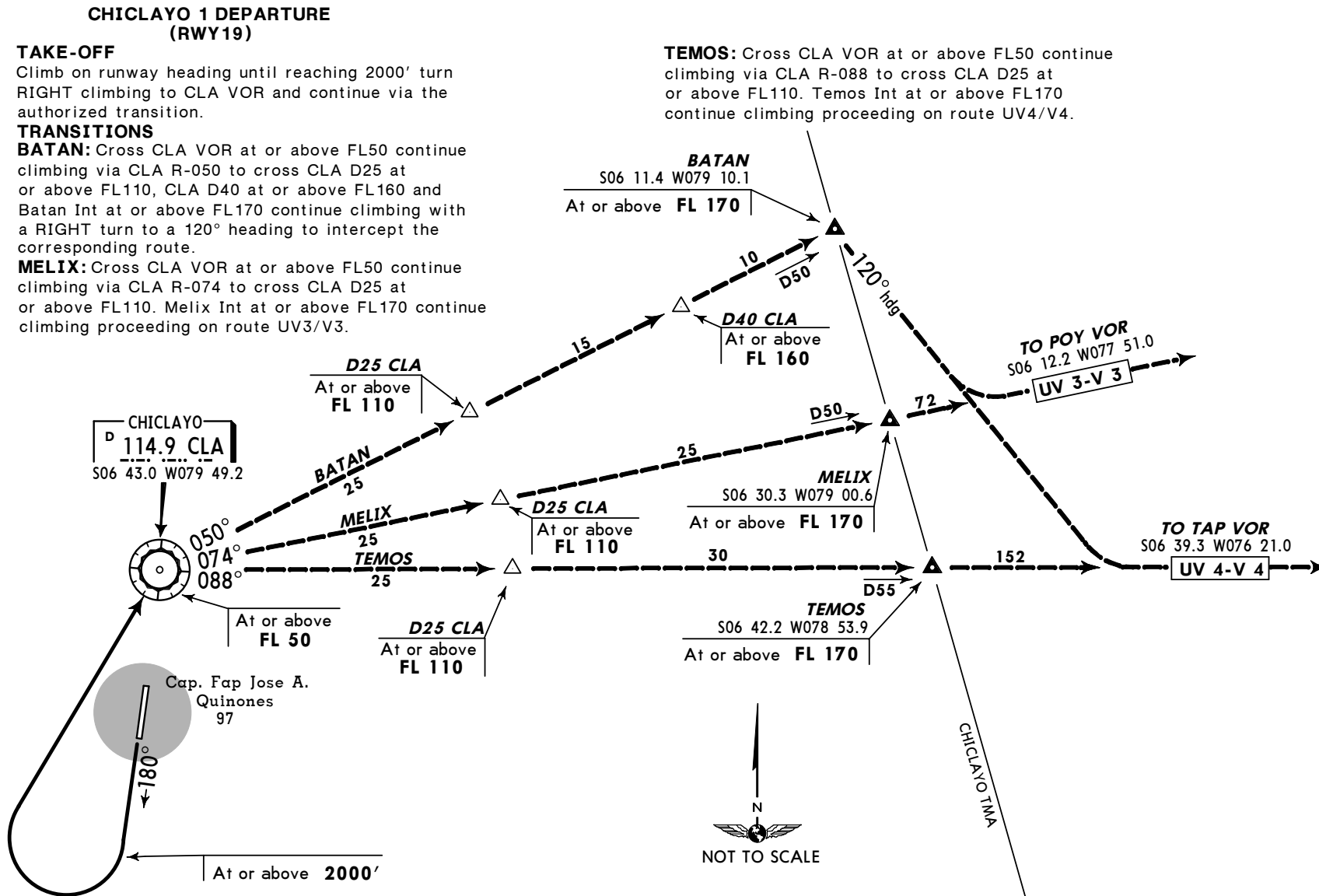
EFF 31 Oct

SID

TRANS LEVEL: FL 40  
TRANS ALT: 3000'

# CHICLAYO 1 DEPARTURE (RWY 19)

CHICLAYO, PERU  
CAP. FAP JOSE A. QUINONES



## CHICLAYO 1 DEPARTURE (RWY19)

### TAKE-OFF

Climb on runway heading until reaching 2000' turn RIGHT climbing to CLA VOR and continue via the authorized transition.

### TRANSITIONS

**BATAN:** Cross CLA VOR at or above FL50 continue climbing via CLA R-050 to cross CLA D25 at or above FL110, CLA D40 at or above FL160 and Batan Int at or above FL170 continue climbing with a RIGHT turn to a 120° heading to intercept the corresponding route.

**MELIX:** Cross CLA VOR at or above FL50 continue climbing via CLA R-074 to cross CLA D25 at or above FL110. Melix Int at or above FL170 continue climbing proceeding on route UV3/V3.

**TEMOS:** Cross CLA VOR at or above FL50 continue climbing via CLA R-088 to cross CLA D25 at or above FL110. Temos Int at or above FL170 continue climbing proceeding on route UV4/V4.

**BATAN**  
S06 11.4 W079 10.1  
At or above FL 170

**D40 CLA**  
At or above FL 160

**D25 CLA**  
At or above FL 110

**CHICLAYO VOR**  
D 114.9 CLA  
S06 43.0 W079 49.2

**TEMOS**  
S06 42.2 W078 53.9  
At or above FL 170

**D25 CLA**  
At or above FL 110

**MELIX**  
S06 30.3 W079 00.6  
At or above FL 170

**D25 CLA**  
At or above FL 110

**TO POY VOR**  
S06 12.2 W077 51.0  
UV 3-V 3

**TO TAP VOR**  
S06 39.3 W076 21.0  
UV 4-V 4

**Cap. Fap Jose A. Quinones 97**



At or above 2000'

SPHI

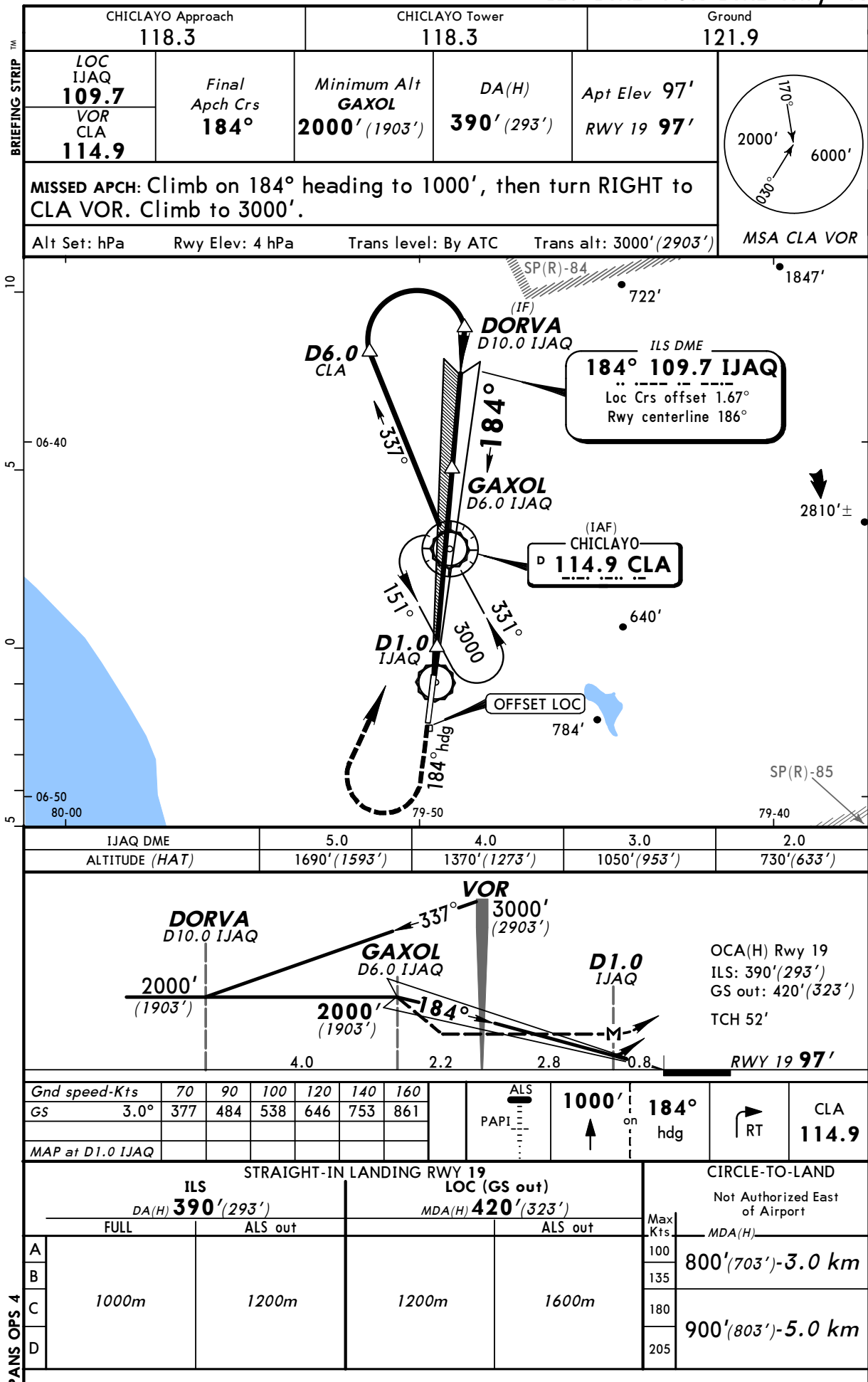
JEPPesen

CHICLAYO, PERU

CAP. FAP JOSE A. QUINONES

27 OCT 00 (11-1)

DESCENT ALFA  
ILS DME VOR DME Rwy 19



SPHI

CAP. FAP JOSE A. QUINONES

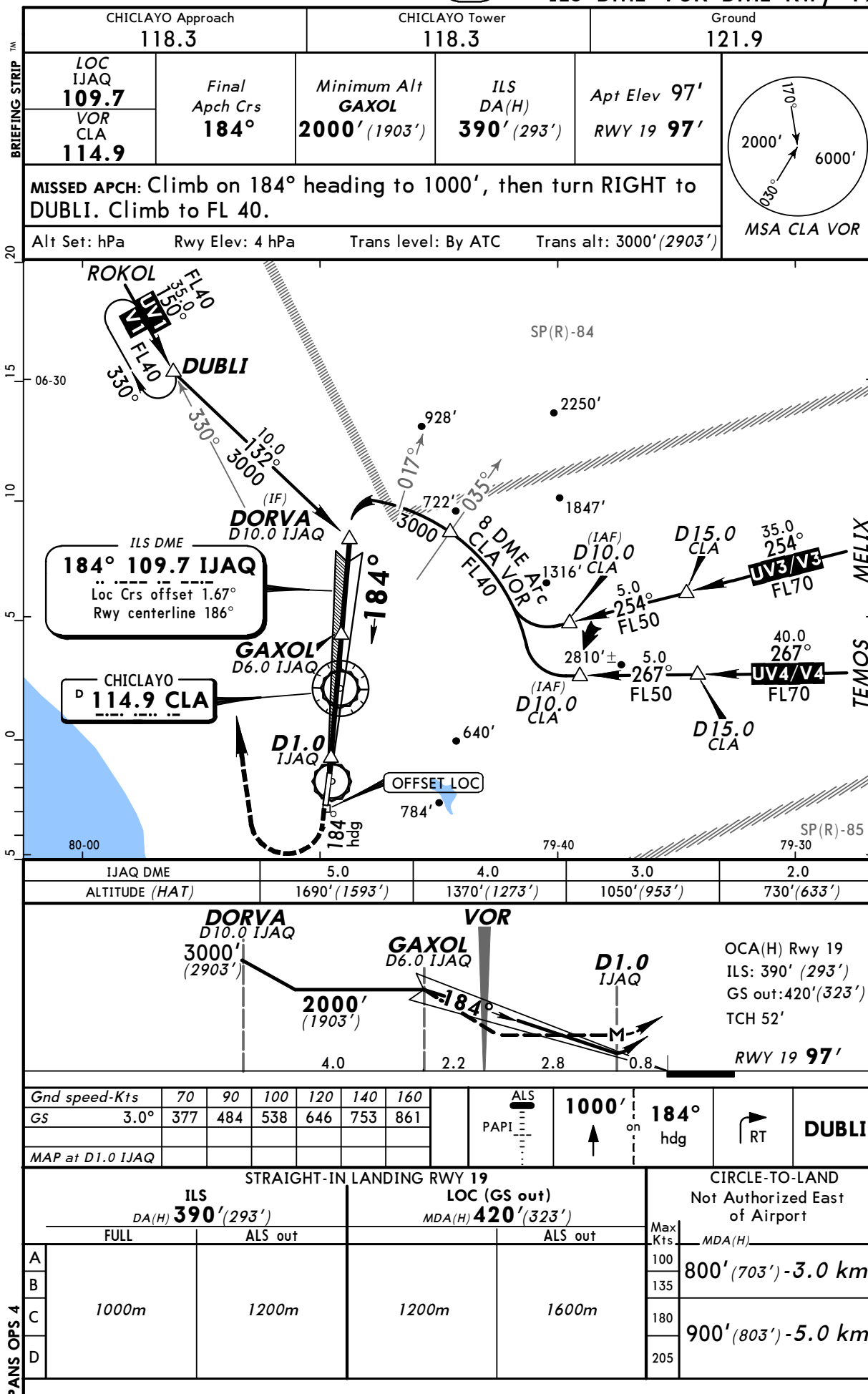
27 OCT 00 (11-2)

JEPPESEN

CHICLAYO, PERU

DESCENT BRAVO

ILS DME VOR DME Rwy 19



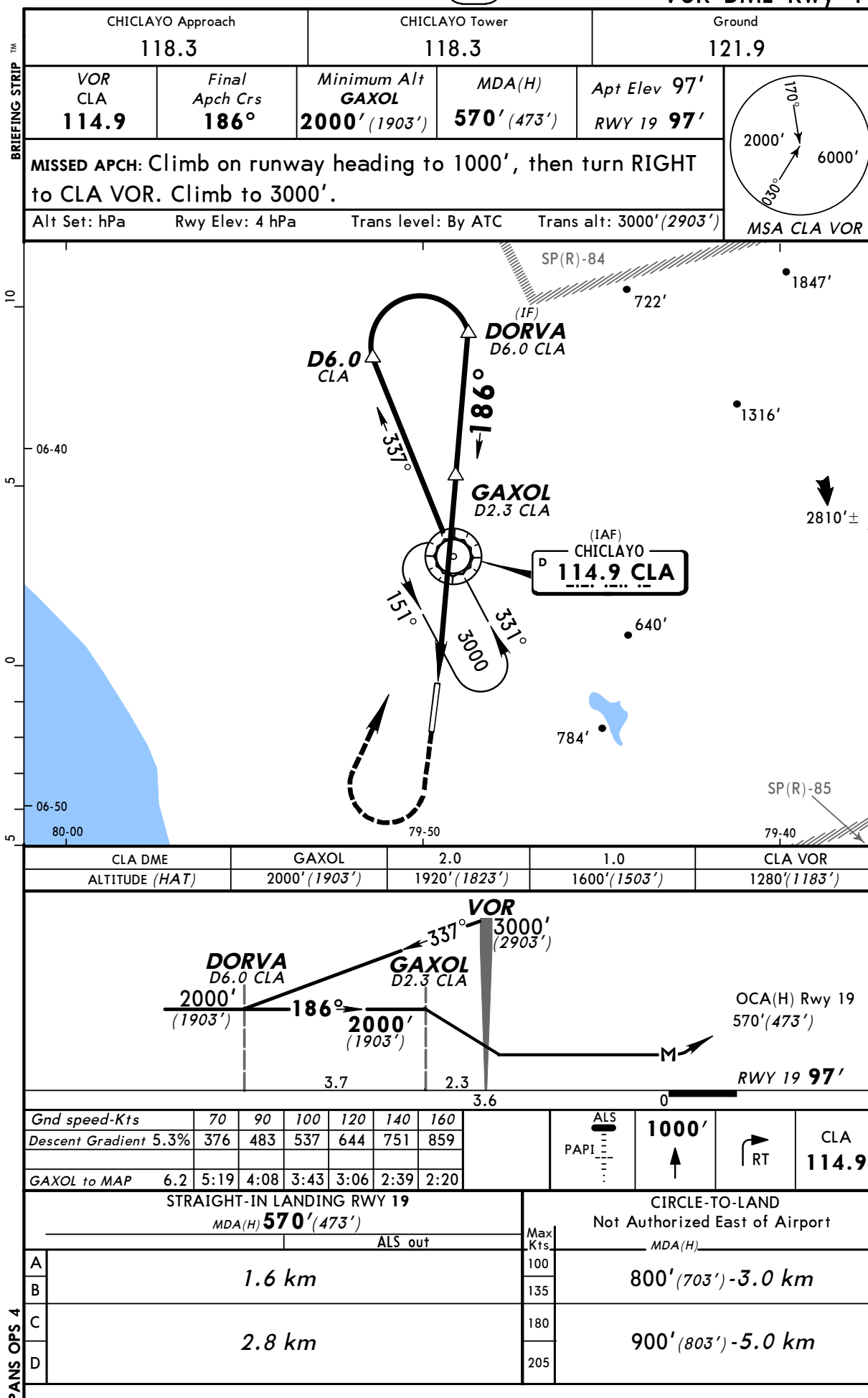
SPHI

CAP. FAP JOSE A. QUINONES

JEPPESEN

27 OCT 00 (13-1)

CHICLAYO, PERU  
DESCENT CHARLIE  
VOR DME Rwy 19

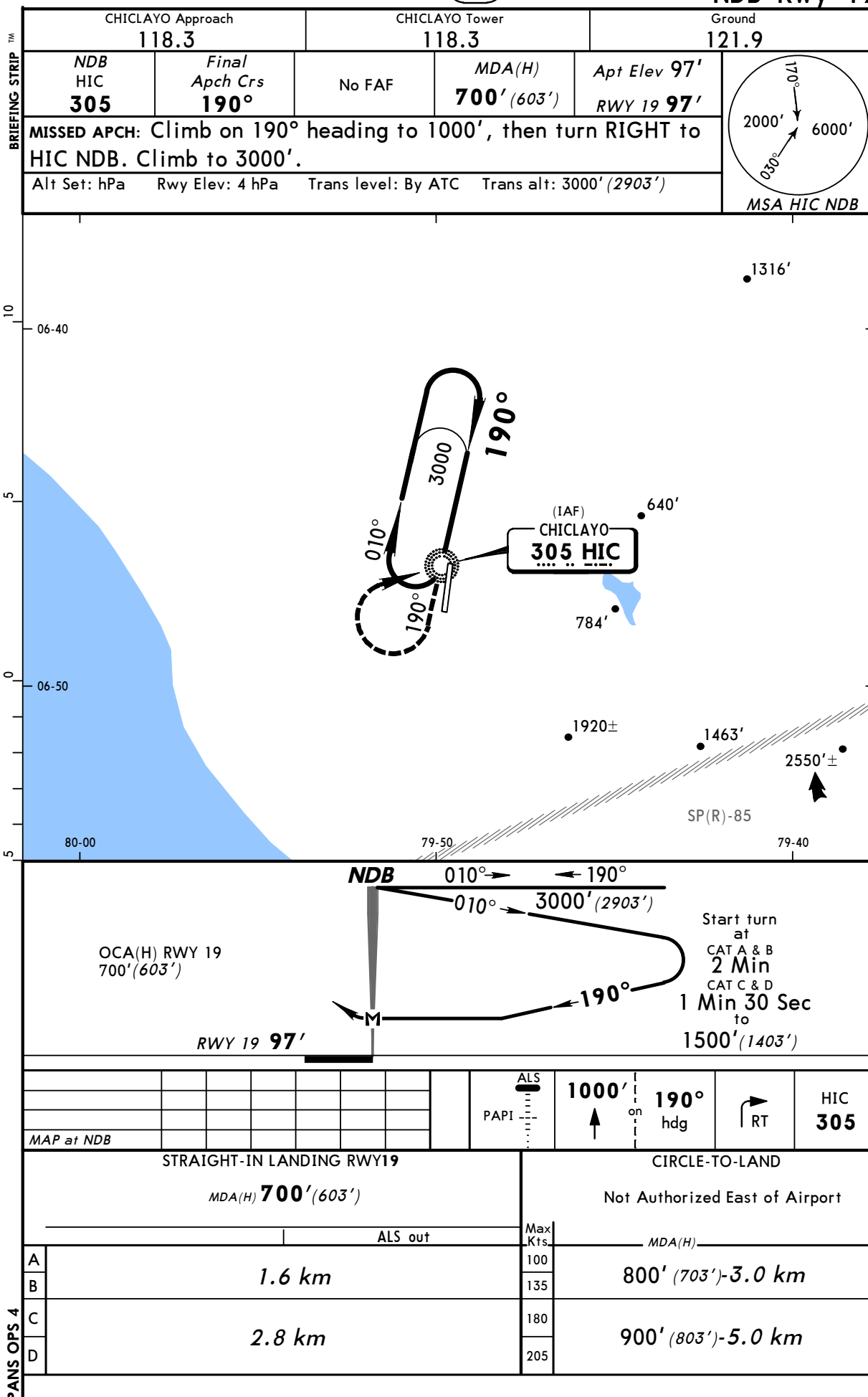


SPHI

CAP. FAP JOSE A. QUINONES

JEPPesen  
27 OCT 00 (16-1)

CHICLAYO, PERU  
DESCENT DELTA  
NDB Rwy 19



Notice: After 07/12/2006 0901Z this chart should not be used without first checking JeppView or NOTAMs.

SPHI

Apt Elev 97'

182.5°/4.2 From CLA 114.9

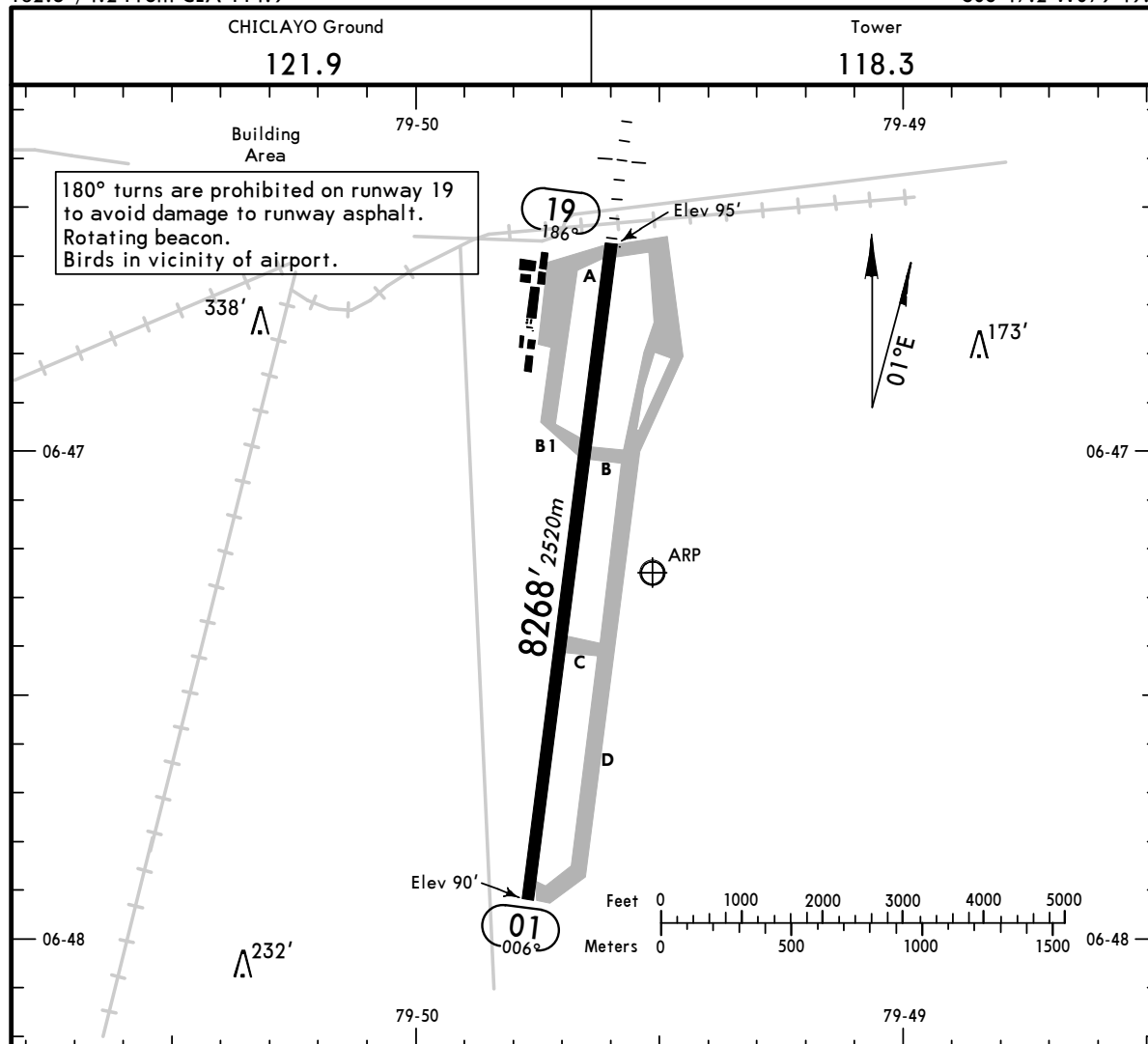
JEPPESEN

27 OCT 00

(11-1)

CHICLAYO, PERU  
CAP. FAP JOSE A. QUINONES

S06 47.2 W079 49.7



ADDITIONAL RUNWAY INFORMATION

| RWY |                                      | USABLE LENGTHS |             |          |       |
|-----|--------------------------------------|----------------|-------------|----------|-------|
|     |                                      | LANDING BEYOND |             | TAKE-OFF | WIDTH |
|     |                                      | Threshold      | Glide Slope |          |       |
| 19  | RL ALS (non-std) PAPI-L (angle 3.0°) |                |             |          | 148'  |
| 01  | RL                                   |                |             |          | 45m   |
|     |                                      |                |             |          |       |
|     |                                      |                |             |          |       |
|     |                                      |                |             |          |       |
|     |                                      |                |             |          |       |

TAKE-OFF

AIR CARRIER (JAA)

|   | LVP must be in Force<br>All Rwy's<br>RCLM (DAY only)<br>or RL | All Rwy's<br>RCLM (DAY only)<br>or RL |  |
|---|---|---------------------------------------|--|
|   |   |                                       |  |
| A |   |                                       |  |
| B | 250m  | 400m                                  |  |
| C |   |                                       |  |
| D | 300m  |                                       |  |