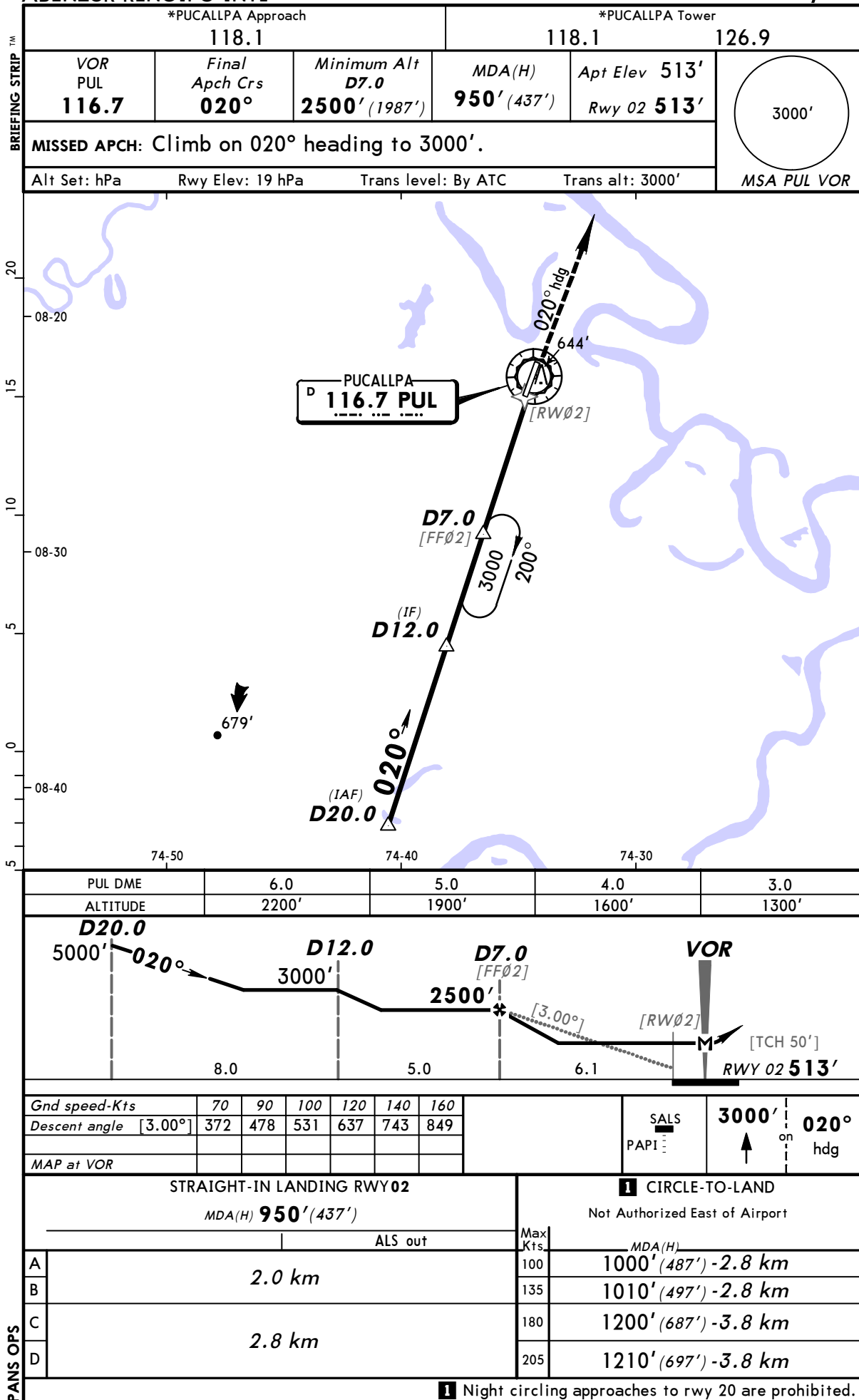


SPCL/PCL
CAP FAP DAVID
ABENZUR RENGIFO INTL

JEPPESEN
7 OCT 05 (13-1)

PUCALLPA, PERU
VOR DME Rwy 02



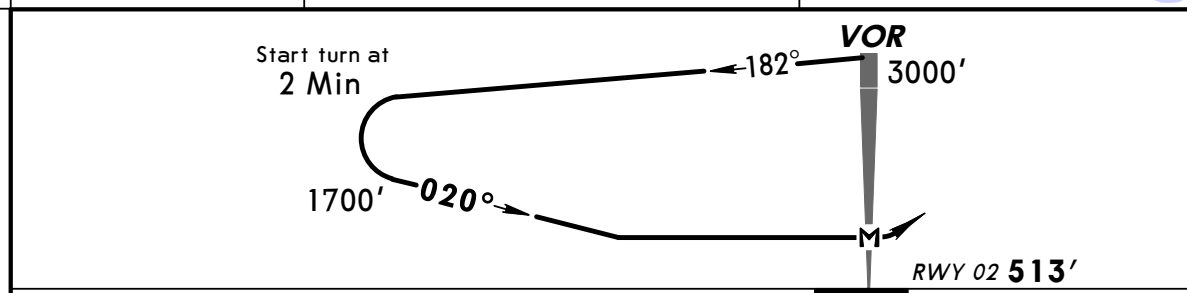
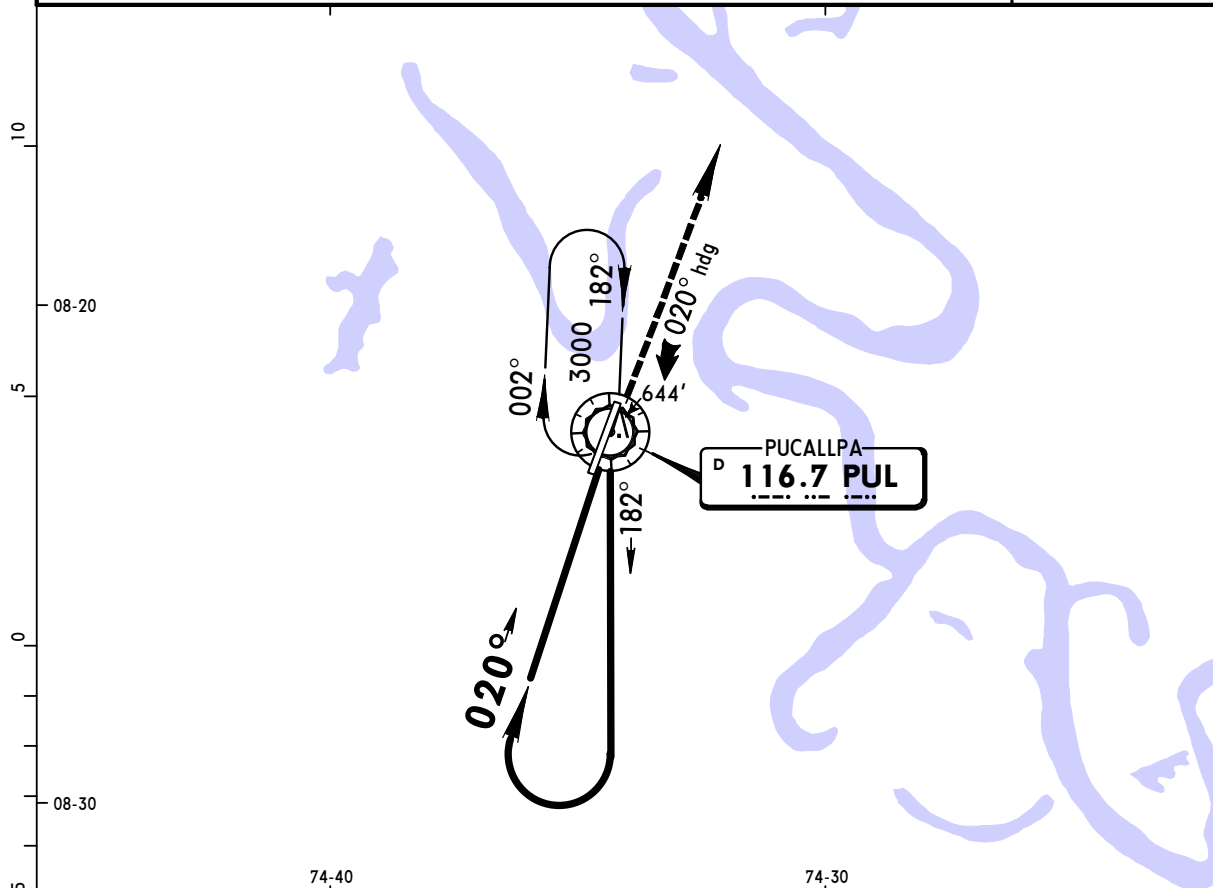
SPCL/PCL
CAP FAP DAVID
ABENZUR RENGIFO INTL

JEPPesen
7 OCT 05 (13-2)

PUCALLPA, PERU
CAT A & B **VOR Rwy 02**

BRIEFING STRIP

*PUCALLPA Approach				*PUCALLPA Tower	
118.1				118.1	126.9
VOR PUL 116.7	Final Apch Crs 020°	No FAF	MDA(H) 1000' (487')	Apt Elev 513' Rwy 02 513'	<div>3000'</div> <div>MSA PUL VOR</div>
MISSED APCH: Climb on 020° heading to 3000'.					
Alt Set: hPa	Rwy Elev: 19 hPa	Trans level: By ATC	Trans alt: 3000'		



MAP at VOR						SALS PAPI	3000'	020° hdg
------------	--	--	--	--	--	--------------	-------	-------------

STRAIGHT-IN LANDING RWY 02			1 CIRCLE-TO-LAND		
MDA(H) 1000' (487')			Not Authorized East of Airport		
ALS out			Max Kts	MDA(H)	
A	2.0 km		100	1000' (487') - 2.8 km	
B			135	1010' (497') - 2.8 km	

PANS OPS

1 Night circling approaches to rwy 20 are prohibited.

CHANGES: Tower frequency, lighting.

© JEPPESEN SANDERSON, INC., 2005. ALL RIGHTS RESERVED.

SPCL/PCL
CAP FAP DAVID
ABENZUR RENGIFO INTL

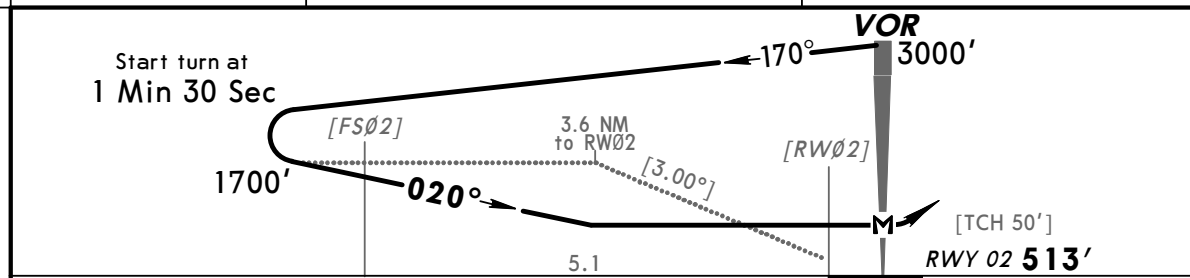
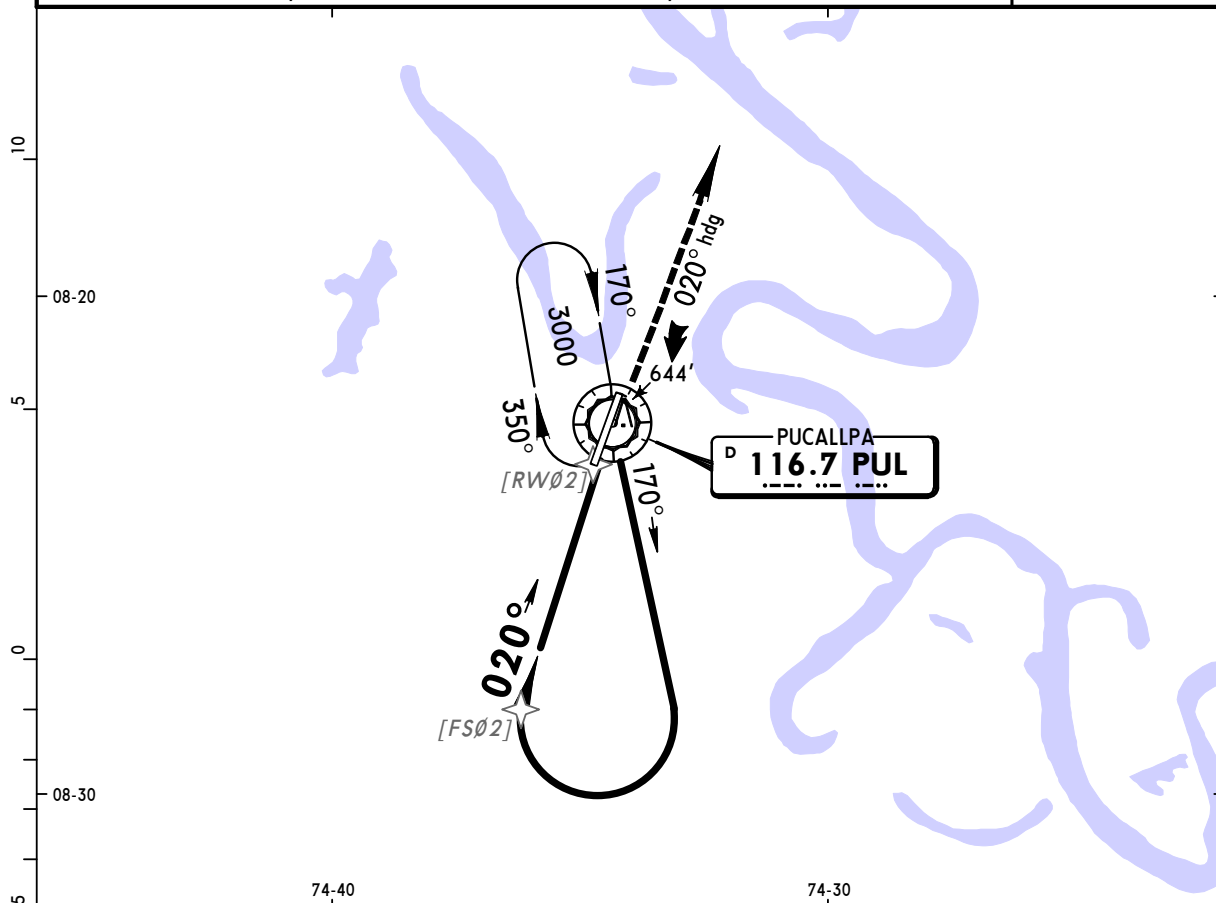
JEPPesen

7 OCT 05 (13-3)

PUCALLPA, PERU
CAT C & D VOR Rwy 02

BRIEFING STRIP

*PUCALLPA Approach				*PUCALLPA Tower	
118.1				118.1	126.9
VOR PUL 116.7	Final Apch Crs 020°	No FAF	MDA(H) 1000' (487')	Apt Elev 513' Rwy 02 513'	3000' MSA PUL VOR
MISSED APCH: Climb on 020° heading to 3000'.					
Alt Set: hPa	Rwy Elev: 19 hPa	Trans level: By ATC	Trans alt: 3000'		



Gnd speed-Kts	70	90	100	120	140	160	SALS		3000'	020°
Descent angle [3.00°]	372	478	531	637	743	849	PAPI		↑	hdg
MAP at VOR										

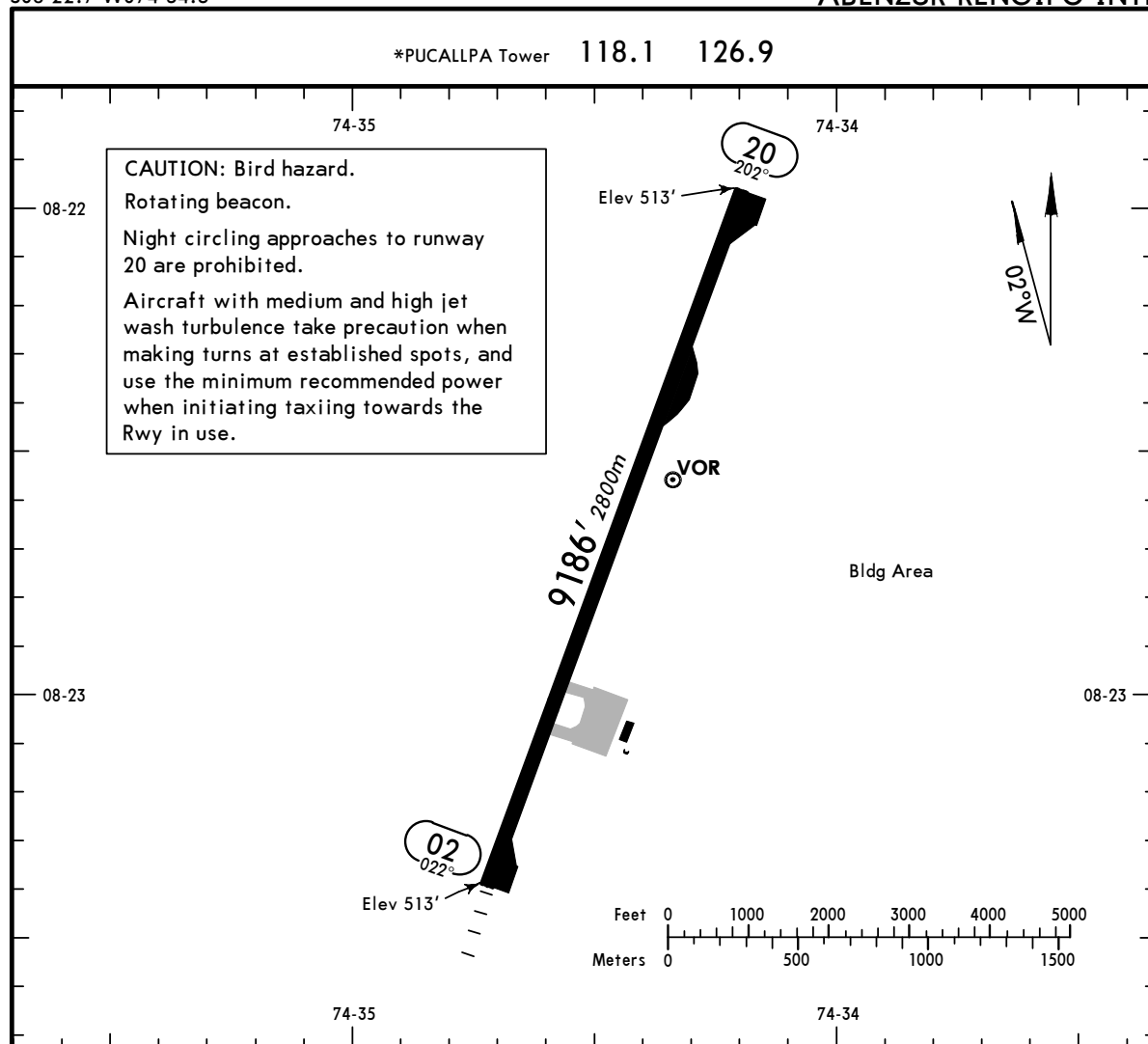
STRAIGHT-IN LANDING RWY 02				1 CIRCLE-TO-LAND	
MDA(H) 1000' (487')				Not Authorized East of Airport	
ALS out				Max Kts	MDA(H)
2.8 km				180	1200' (687') - 3.6 km
				205	1210' (697') - 3.6 km
1 Night circling approaches to rwy 20 are prohibited.					

Notice: After 07/12/2006 0901Z this chart should not be used without first checking JeppView or NOTAMs.

SPCL/PCL
Apt Elev **513'**
S08 22.7 W074 34.5

JEPPESEN
7 OCT 05 **(13-1)**

PUCALLPA, PERU
CAP FAP DAVID
ABENZUR RENGIFO INTL



ADDITIONAL RUNWAY INFORMATION

RWY		USABLE LENGTHS			WIDTH
		Threshold	Landing Beyond	TAKE-OFF	
02	RL SALS (non-std) PAPI-L (angle 3.0°)				148'
20	RL PAPI-L (angle 3.0°)				45m

TAKE-OFF

	AIR CARRIER (JAA)		AIR CARRIER (FAR 121)	
	LVP must be in Force All Rwys RCLM (Day only) or RL	All Rwys RCLM (Day only) or RL	All Rwys Adequate Vis Ref	
A			2 Eng	
B	250m	400m	3 & 4 Eng	400m
C				
D	300m			