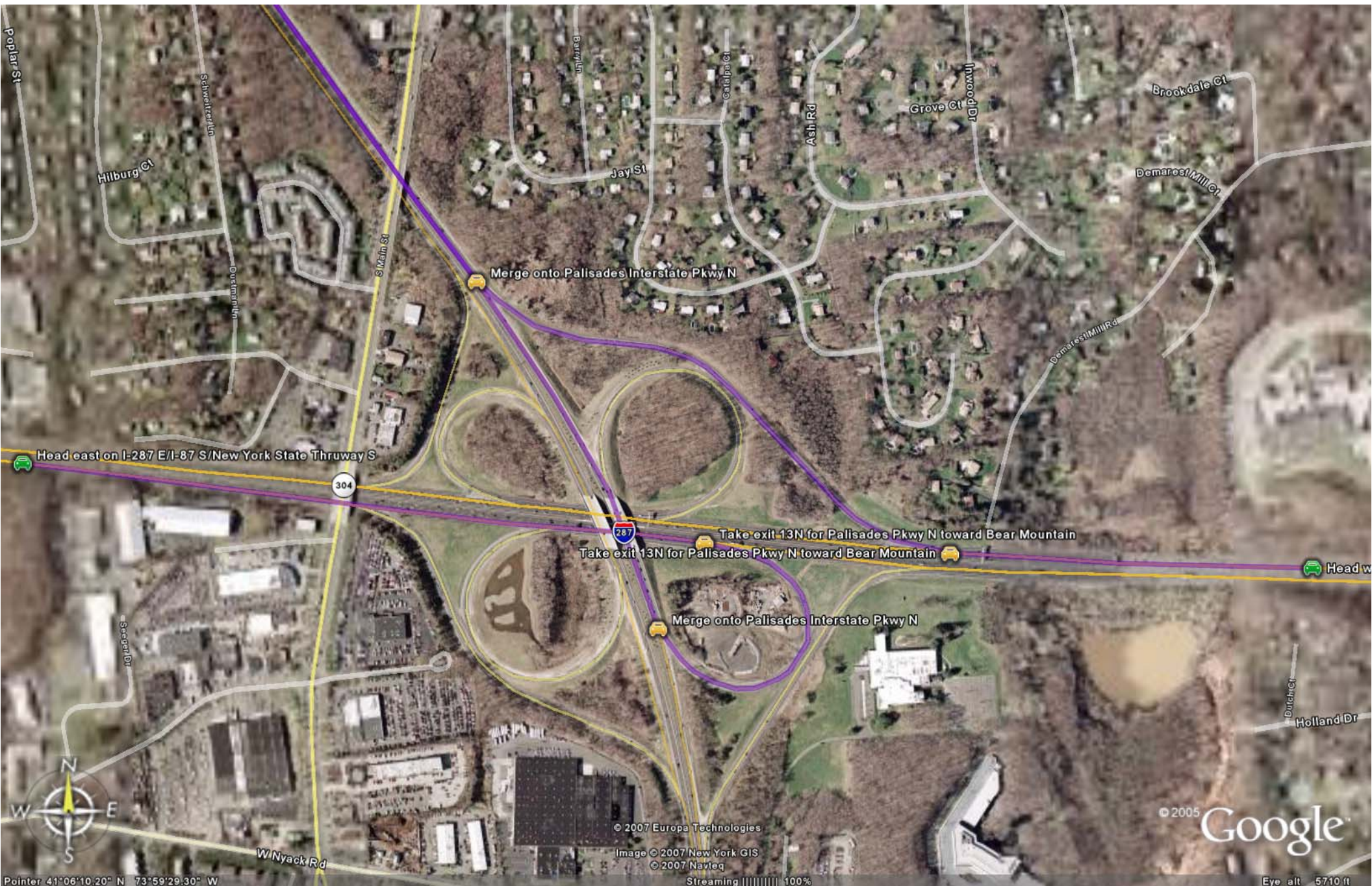


Directions to Germonds from Thruway

Take Palisades Parkway North to Exit 10. Take a right onto Germonds Road. After the traffic light, approximately $\frac{1}{4}$ mile, take a right to stay on Germonds Road. Approximately $\frac{1}{2}$ mile on right is the entrance to Germonds Park. Fields are all the way in the back.



Head east on I-287 E/I-87 S/New York State Thruway S

Merge onto Palisades Interstate Pkwy N

Take exit 13N for Palisades Pkwy N toward Bear Mountain

Take exit 13N for Palisades Pkwy N toward Bear Mountain

Merge onto Palisades Interstate Pkwy N

Head w



© 2007 Europa Technologies

Image © 2007 New York GIS

© 2007 Navteq

Streaming ||||| 100%

© 2005 Google

Pointer 41°06'10.20" N 73°59'29.30" W

Eye alt 5710 ft



to stay on Germonds Rd

Turn right to stay on Germonds Rd

Arrive at destination



304

© 2007 Europa Technologies

Image © 2007 New York GIS
© 2007 Navteq

Streaming ||||| 100%

© 2005

Google

Eye alt 5710 ft

Pointer 41°06'59.35" N 73°59'15.15" W



Oak Wood Rd

Arlington Ct

Diddle Ln

Deerfield Ln

Rockford Dr

Danville Ct

Mumfords Ln



© 2007 Europa Technologies

Image © 2007 New York GIS

© 2007 Navteq

Streaming [|||||] 100%

© 2005

Google

Stillpond Ter

Stonehedge Dr

Arrive at destination

Pointer 41°06'52.69" N 73°59'16.22" W

Eye alt 2832 ft