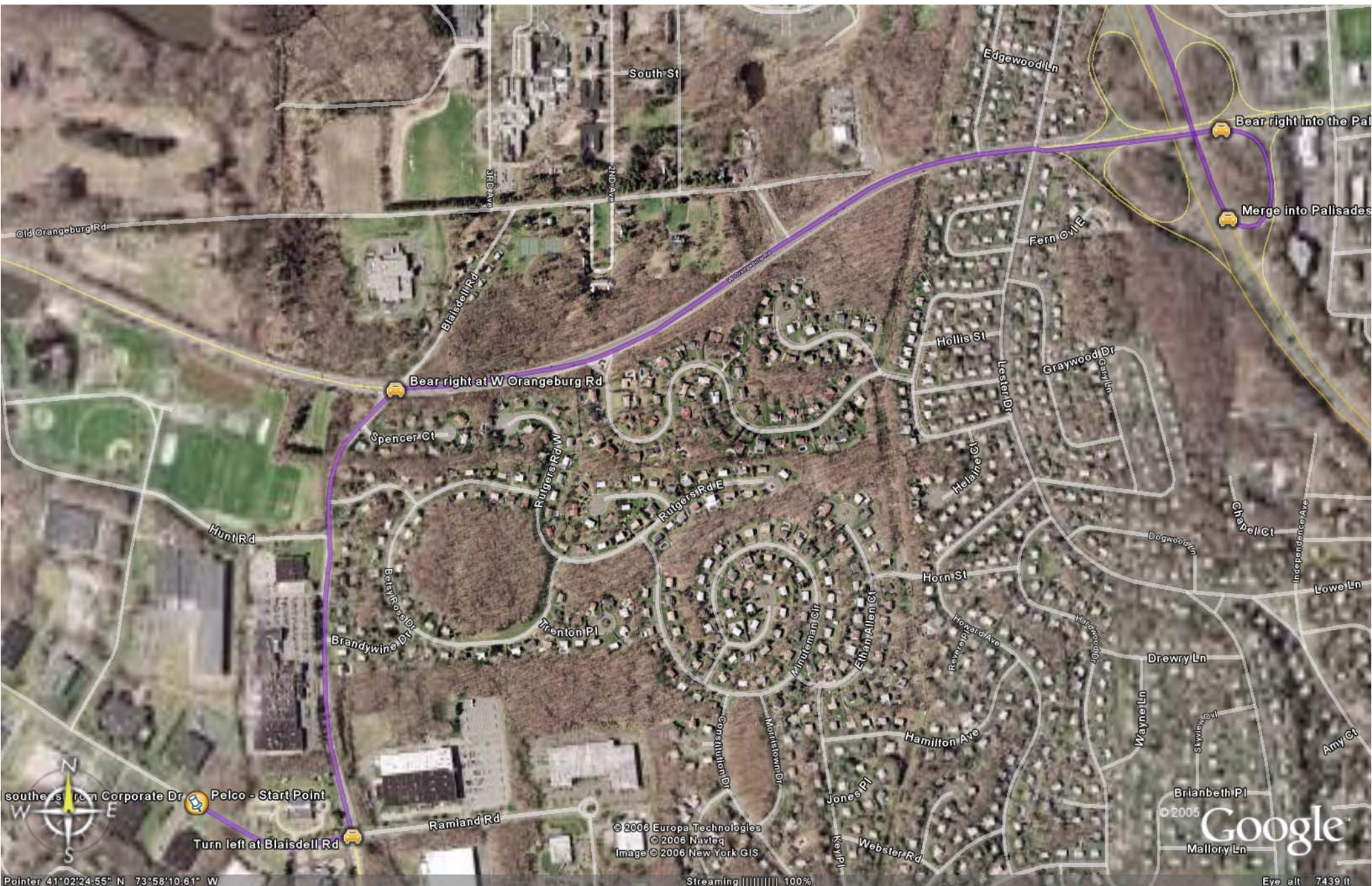


Directions to Rockland Community College

Take palisades North to the Thruway West (exit 9W), continue on the Thruway to exit 14B (Airmount Road), turn right at the light, stay on Airmount Road until you reach College road intersection, then make a left and continue on College Road until you reach the entrance to RCC, make a left and at the stop sign make a left, follow that road around and thru the parking lots until it ends and then you are there.



southern Corporate Dr Pelco - Start Point

Turn left at Blaisdell Rd

Bear right at W Orangeburg Rd

Bear right into the Palisades

Merge into Palisades

© 2006 Europa Technologies
© 2006 Navteq
Image © 2006 New York GIS

© 2005 Google

Pointer 41°02'24.55" N 73°58'10.61" W

Streaming 100%

Eye alt 7439 ft



©2006 Europa Technologies
©2006 Navteq
Image ©2006 New York GIS
Fern
Streaming ||||| 100%

© 2005 Google

Pointer 41°03'03.20" N 73°57'42.97" W

Eye alt 7439 ft



Polyn Hills Dr Abbey Rd

Leber Rd

5th Ave

State Town Rd

Lynch Ct

Sunset Rd

Millon Ct Dr

Ellsworth Dr

Old Western Hwy

Burrows Ln

Colony Dr

Private Lovett Ct

Paul Pl

Greenfield Ln

1346

Manigault Bl

Erie St W

Renie Ln

Bluefields Ln

Buttercup Ln

Blauvelt Rd

Regal St

Blairwood Ln

Wilson St

Harding St

Coollidge St

Terry Ln

Michelle Dr

Diane Dr

Rodina Ct

Van Wyck Rd

Lt Crawford Wheeler Ct

© 2006 Europa Technologies
© 2006 Navteq
Image © 2006 New York GIS
Stellwood Dr

© 2005 Google



Pointer: 41°03'56.44" N 73°58'29.70" W

Streaming ||||| 100%

Eye alt 7439 ft



304

© 2006 Europa Technologies
© 2006 Navteq
Image © 2006 New York GIS

© 2005 Google

Pointer: 41°04'49.56" N 73°59'08.33" W

Streaming 100%

Eye alt 7439 ft



Palmer Ave

Pralle Ln

287

87

Demarest Mill Rd W

Holland Dr

W Nyack Rd

Partridge Dr

1st St

S Main St

Parkway Dr

Indian Dr

Pierce St

Pipers Glen

Spruce Ln

Curtin Dr

Grace St

Bull Run Dr

E Charles St

304

E Orchard St

59

Van Nostrand Ave

Church St

Lurch Ct



St Anthony Ave

Lake Naraul Dr

Saxon Ln

Sunnybank Dr

Pittsford Way

© 2006 Europa Technologies
© 2006 Navteq
Image © 2006 New York GIS

© 2005 Google

Streaming 100%

Eye alt 7439 ft



Lisa Ln
Beech St
Oak Ln
Hickory Dr
Spruce St
Beech Dr
Forest Ave
Kelvin Ct
Norge Ave
Alice Dr
New Haven Ave
W Palmer Ave
Fenner Ln
Rockland Plz

Pigeon Hill Rd
Spruce Dr
Ludwig Rd
Carmen Pl
S Grantford Rd
Schweitzer Ln
Dustman Ln
Amanda Ln

Bardonia

Bardonia Rd

Take the I-287 W/I-87 exit 9W to Albany

Merge into I-287 W/I-87 N

Jay St
Renee Ln
Arbor Ln
Ash Rd

59

304

© 2006 Europa Technologies
© 2006 Navteq
Image © 2006 New York GIS

© 2005 Google

Pointer 41°06'12.09" N 74°00'08.41" W

Streaming 100%

Eye alt 7439 ft



Route from I-287 W/I-87 N
Thruway-West-2
Arrive at: +41° 5' 48.86", -74° 2' 43.14"



© 2006 Europa Technologies
© 2006 Navteq
Image © 2006 New York GIS

© 2005 Google

Streaming ||||| 100%

Eye alt 7439 ft



87

59

Head west from I-287 W/I-87 N Thruway-West-2

© 2006 Europa Technologies
© 2006 Navteq
Image © 2006 New York GIS

© 2005 Google

Pointer, 41°06'03.99" N 74°03'37.29" W

Streaming 100%

Eye alt 7439 ft



Take the Airmont Rd exit 14B to Airmont/Montebello



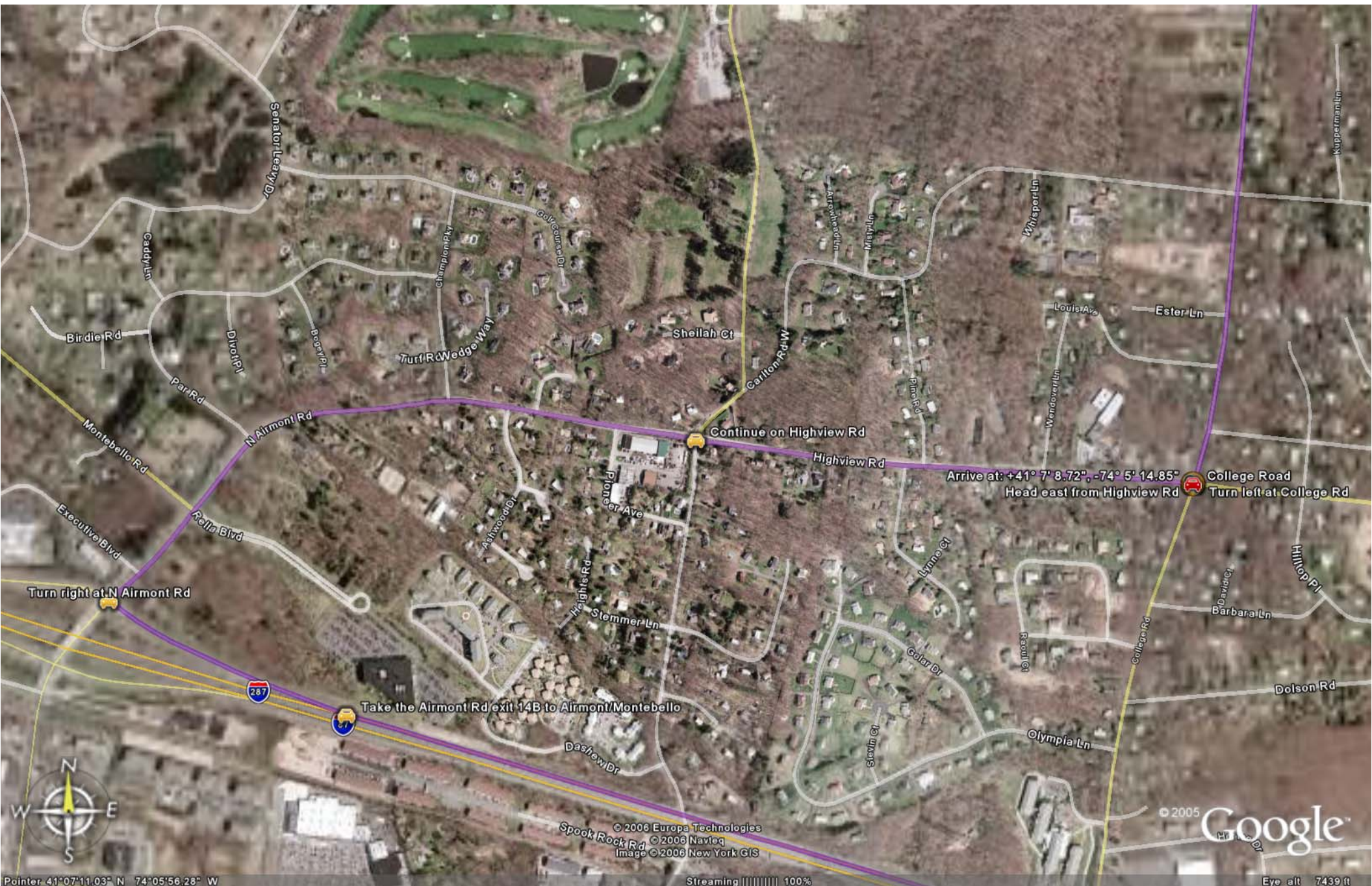
© 2006 Europa Technologies
© 2006 Navteq
Image © 2006 New York GIS

© 2005 Google

Pointer 41°06'37.08" N 74°05'32.95" W

Streaming ||||| 100%

Eye alt 7439 ft



287

Turn right at N Airmont Rd

Take the Airmont Rd exit 14B to Airmont/Montebello

Continue on Highview Rd

Arrive at +41° 7' 8.72", -74° 5' 14.85"
Head east from Highview Rd
Turn left at College Rd



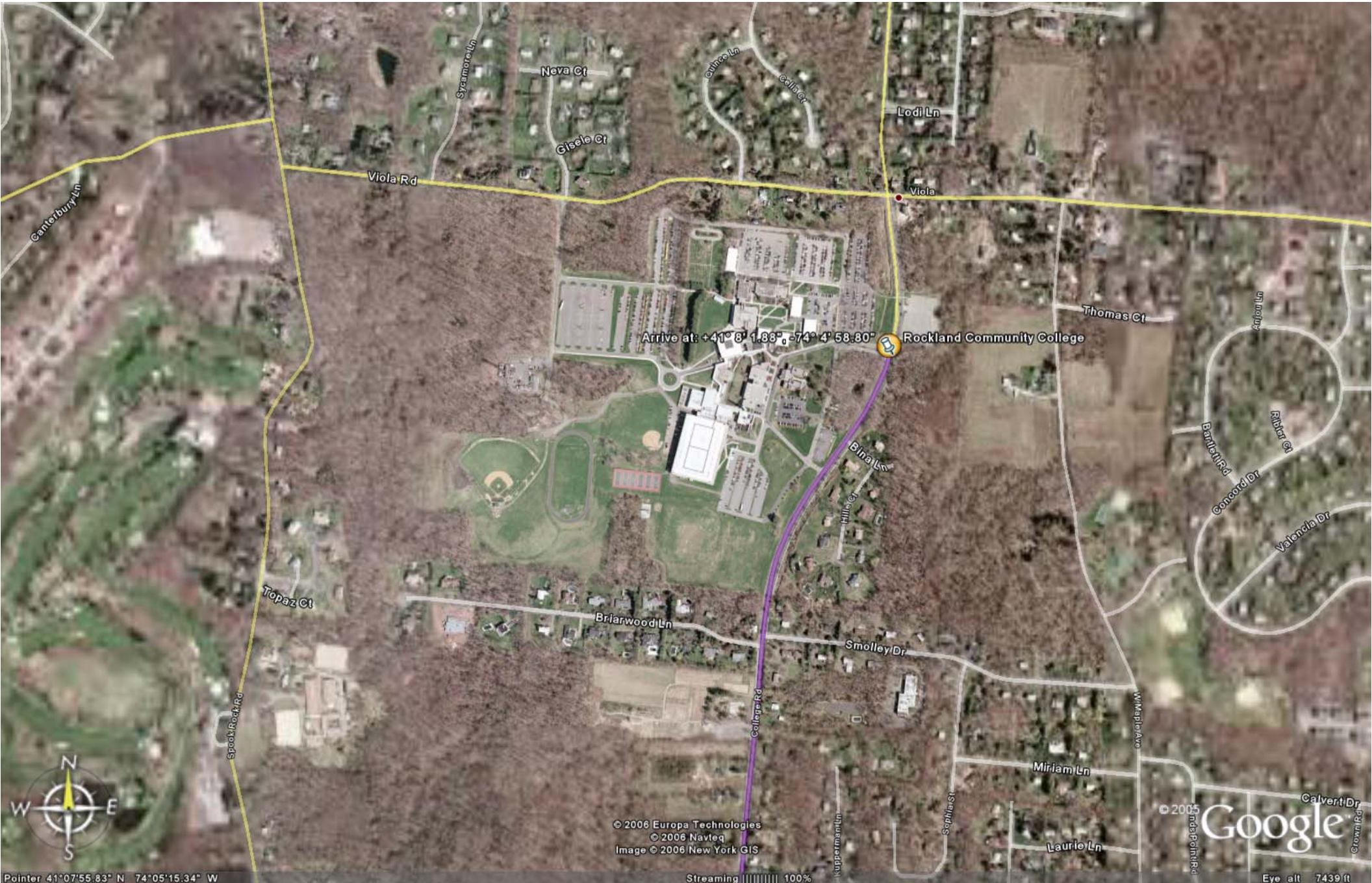
© 2006 Europa Technologies
© 2006 Navteq
Image © 2006 New York GIS

© 2005 Google

Pointer: 41°07'11.03" N 74°05'56.28" W

Streaming ||||| 100%

Eye alt 7439 ft



Arrive at: +41° 8' 1.88", -74° 4' 58.80"

Rockland Community College



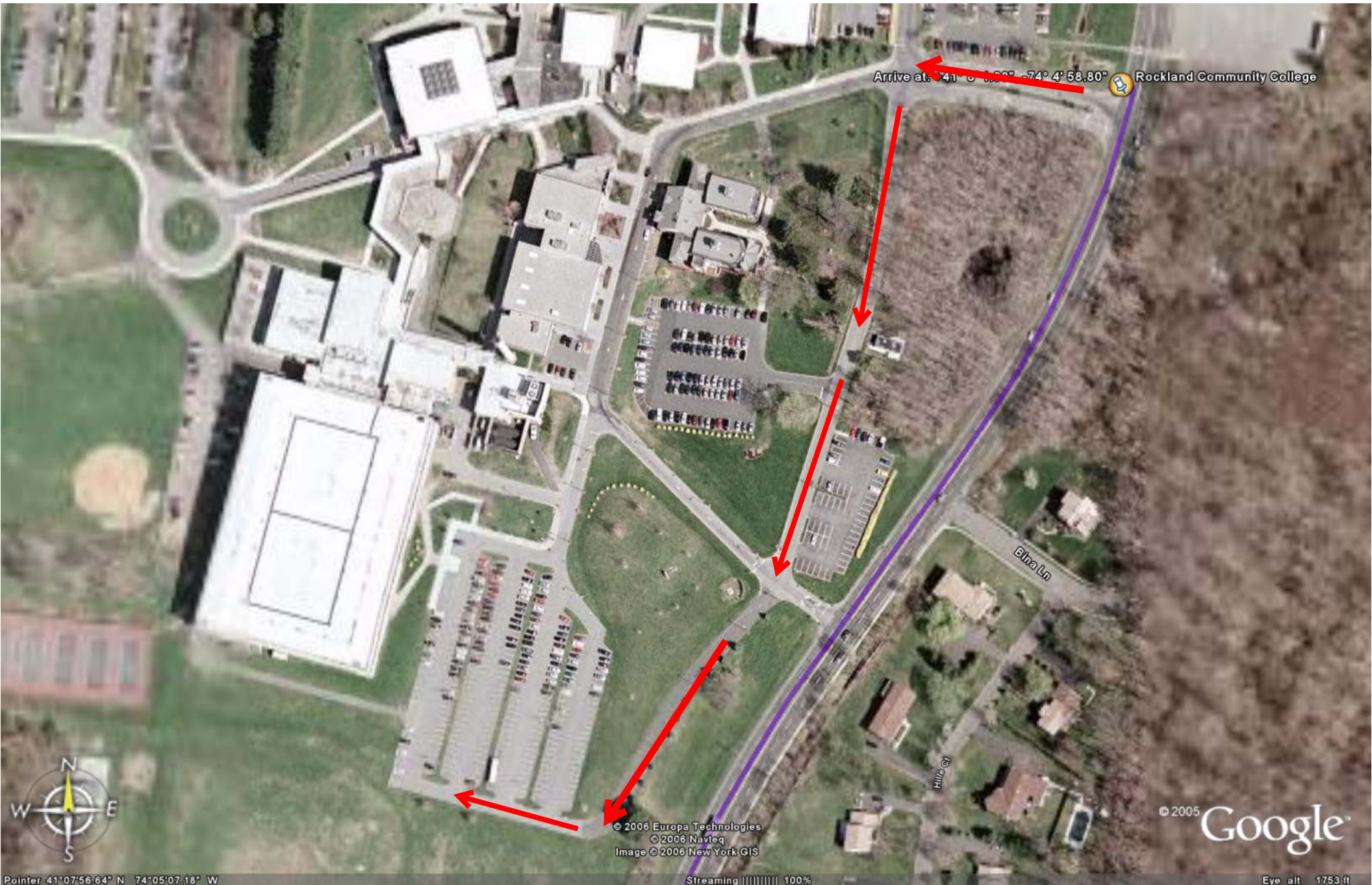
© 2006 Europa Technologies
© 2006 Navteq
Image © 2006 New York GIS

© 2005 Google
Indis Point Rd
Crown Rd

Pointer 41°07'55.83" N 74°05'15.34" W

Streaming ||||| 100%

Eye alt 7439 ft



Arrive at: 41° 07' 58.80" N 74° 04' 58.80" W Rockland Community College



Bina Ln

Hill Cr



© 2006 Europa Technologies
© 2006 Navteq
Image © 2006 New York GIS

© 2005 Google

Pointer: 41°07'56.64" N 74°05'07.18" W

Streaming [|||||] 100%

Eye alt 1753 ft