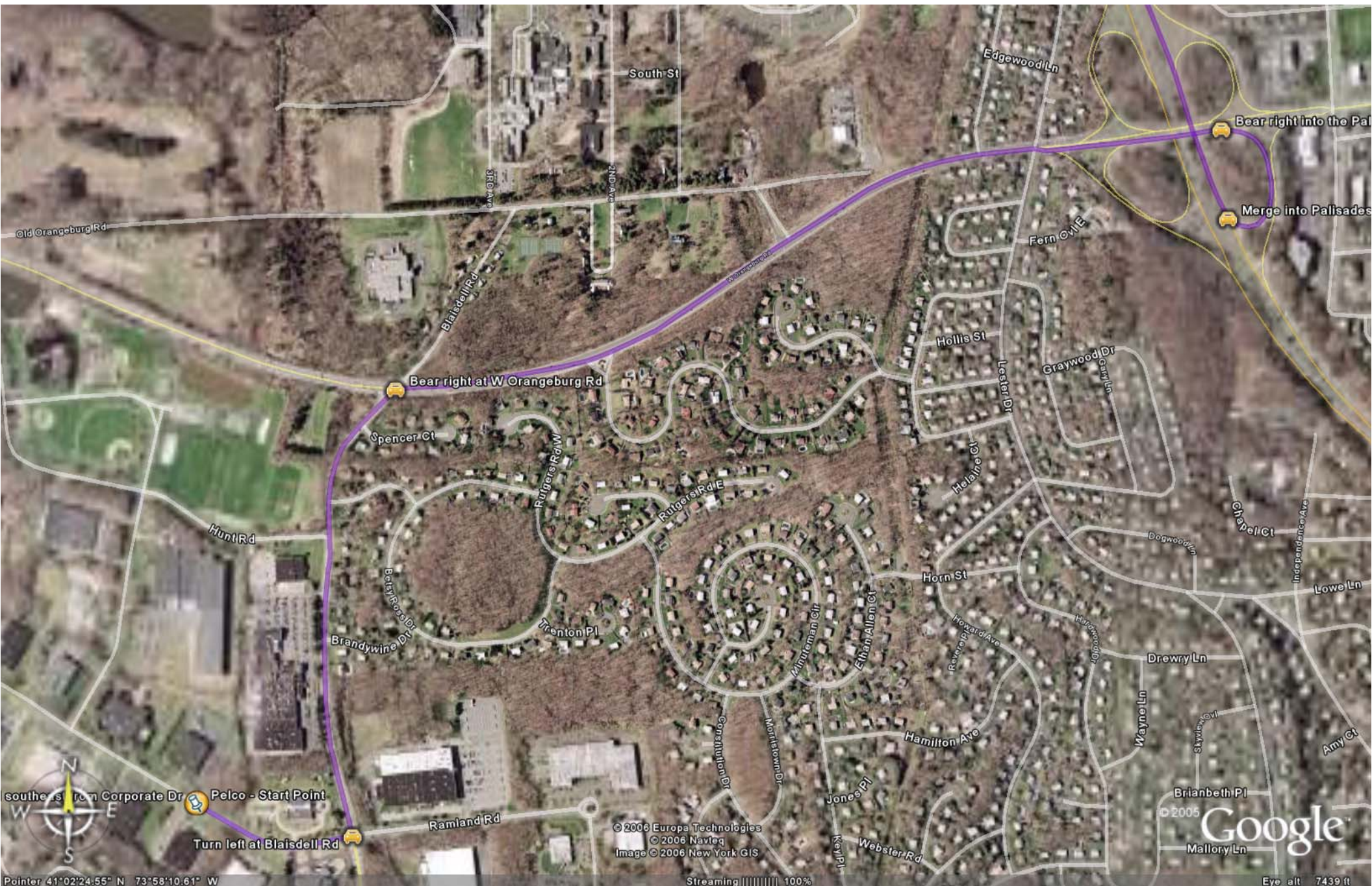


Directions to Manny Welder Park

Take palisades North to the Thruway West (exit 9W), continue on the Thruway to exit 14B (Airmount Road), turn right at the light, stay on Airmount Road until you reach the College Road intersection, then make a left at the light and continue on College Road until you reach the Smolley Drive intersection, take a right on Smolley Drive and follow to end, then take a left on W Maple Ave, Manny Welder Park on the right. Take next right into parking area.



southern Corporate Dr Pelco - Start Point

Turn left at Blaisdell Rd

Bear right at W Orangeburg Rd

Bear right into the Palisades

Merge into Palisades

Pointer 41°02'24.55" N 73°58'10.61" W

© 2006 Europa Technologies
© 2006 Navteq
Image © 2006 New York GIS

Streaming 100%

© 2005 Google

Eye alt 7439 ft



Pointer 41°03'03.20" N 73°57'42.97" W

©2006 Europa Technologies
©2006 Navteq
Image ©2006 New York GIS
Fern

Streaming ||||| 100%

Bear right into the Palisades Interstate Parkway North entry ramp

Merge into Palisades Interstate Pky N

© 2005 Google

Eye alt 7439 ft



Pointer: 41°03'56.44" N 73°58'29.70" W

© 2006 Europa Technologies
© 2006 Navteq
Image © 2006 New York GIS

© 2005 Google

Streaming 100%

Eye alt 7439 ft



304

© 2006 Europa Technologies
© 2006 Navteq
Image © 2006 New York GIS

© 2005 Google

Pointer: 41°04'49.56" N 73°59'08.33" W

Streaming 100%

Eye alt 7439 ft



304

59



© 2006 Europa Technologies
© 2006 Navteq
Image © 2006 New York GIS

© 2005 Google

Streaming ||||| 100%

Eye alt 7439 ft

Pointer: 41°05'39.04" N 73°59'39.14" W



Take the I-287 W/I-87 exit 9W to Albany

Merge into I-287 W/I-87 N

© 2006 Europa Technologies
© 2006 Navteq
Image © 2006 New York GIS

© 2005 Google

Pointer 41°06'12.09" N 74°00'08.41" W

Streaming 100%

Eye alt 7439 ft



Route from I-287 W/I-87 N
Thruway-West-2
Arrive at: +41° 5' 48.86", -74° 2' 43.14"



© 2006 Europa Technologies
© 2006 Navteq
Image © 2006 New York GIS

© 2005 Google

Streaming 100%

Eye alt 7439 ft



87

59

Head west from I-287 W/I-87 N Thruway-West-2

© 2006 Europa Technologies
© 2006 Navteq
Image © 2006 New York GIS

© 2005 Google

Pointer, 41°06'03.99" N 74°03'37.29" W

Streaming 100%

Eye alt 7439 ft



Take the Airmont Rd exit 14B to Airmont/Montebello

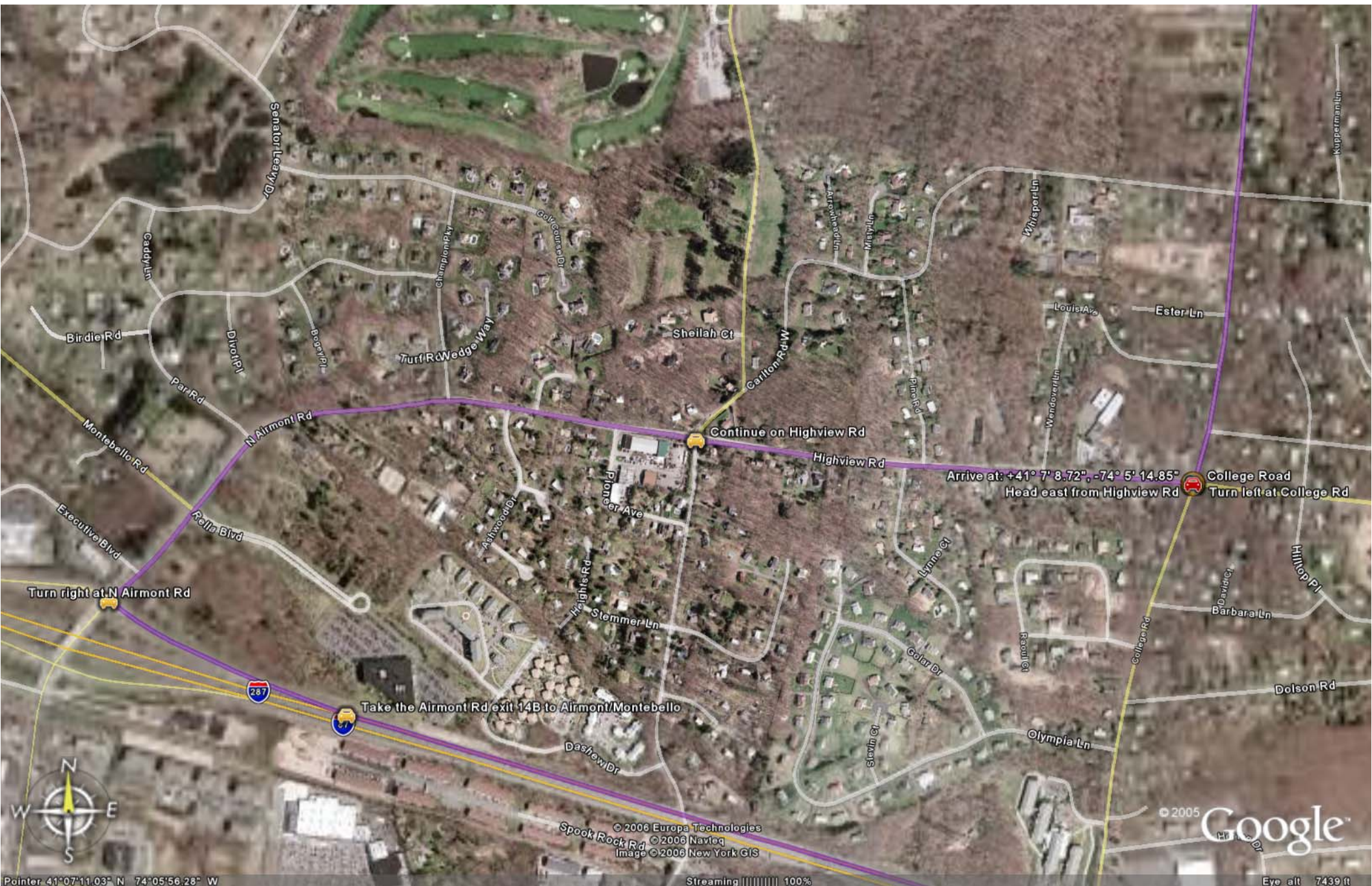
© 2006 Europa Technologies
© 2006 Navteq
Image © 2006 New York GIS

© 2005 Google

Pointer 41°06'37.08" N 74°05'32.95" W

Streaming ||||| 100%

Eye alt 7439 ft



Senator Leavy Dr
Caddy Ln
Birdie Rd
Divot Pl
Par Rd
Montebello Rd
Executive Blvd
N Airmont Rd
Rella Blvd

Champion Pkwy
Golfcourse Dr
Turf Rd Wedge Way
Booger Pl

Sheilah Ct

Continue on Highview Rd
Highview Rd

Arrive at: +41° 7' 8.72", -74° 5' 14.85"
Head east from Highview Rd
Turn left at College Rd

Turn right at N Airmont Rd

Take the Airmont Rd exit 14B to Airmont/Montebello



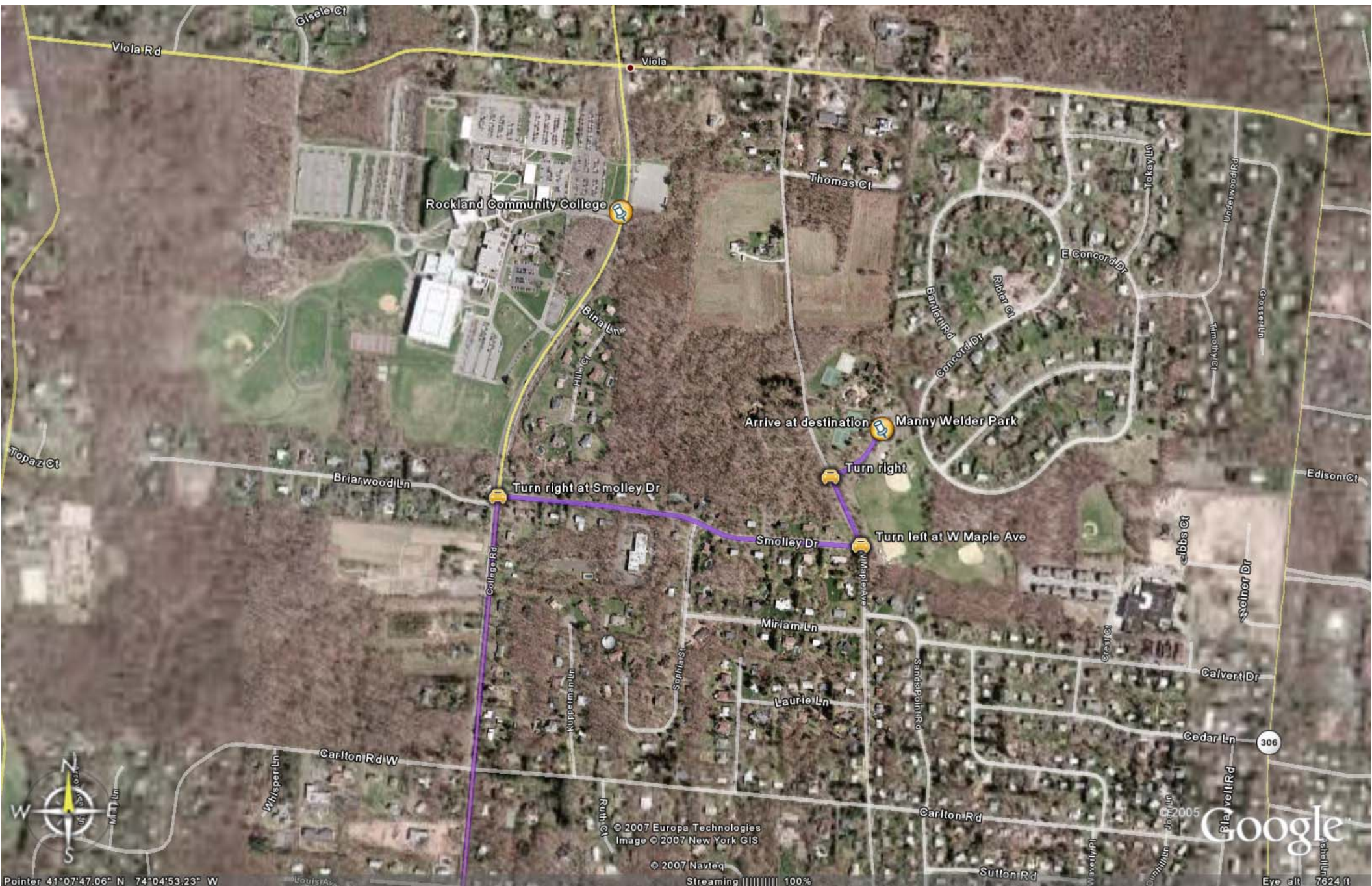
© 2006 Europa Technologies
© 2006 Navteq
Image © 2006 New York GIS

© 2005 Google

Pointer: 41°07'11.03" N 74°05'56.28" W

Streaming [|||||] 100%

Eye alt 7439 ft



Rockland Community College

Arrive at destination Manny Welder Park

Turn right at Smolley Dr

Turn right

Turn left at W Maple Ave



© 2007 Europa Technologies
Image © 2007 New York GIS

© 2007 Navteq


Streaming 100%


Google


Eye alt 7624 ft

Pointer 41°07'47.06" N 74°04'53.23" W



Arrive at destination  Manny Weider Park

 Turn right

 Turn left at W Maple Ave

Smolley Dr

W Maple Ave



© 2007 Europa Technologies
Image © 2007 New York GIS

© 2007 Navteq

Streaming ||||| 100%

© 2005 Google

Pointer 41°07'43.33" N 74°04'33.08" W

Eye alt 1651 ft