

Directions to Kings Park from Pelco

Take Orangeburg Road to Route 303. Turn left on Route 303. Stay on Route 303 for approximately 7 ¼ miles to Lake Road. Turn left on Lake Road. Follow Lake Road for approximately 7/10 mile to Kings Highway. Turn left on Kings Hwy. Kings Park fields are ¼ mile on right.

Directions to Kings Park from Thruway

Take Thruway exit for Route 303. Turn left on Route 303. Stay on Route 303 for approximately 3 ½ miles to Lake Road. Turn left on Lake Road. Follow Lake Road for approximately 7/10 mile to Kings Highway. Turn left on Kings Hwy. Kings Park fields are ¼ mile on right.



Old Orangeburg Rd

Blaisdell Rd

Slight right at W Orangeburg Rd

Spencer Ct

Dutchess Dr

Hunt Rd

Rutgers Rd/W

Rutgers Rd E

Olympic Dr

Brandywine Dr

Trenton Pl

Buckingham Pl

Minuteman Cir

Ethan Allen Ct

Head southeast on Corporate Dr toward Hog Rd
Pelco - Start Point



Pelco - Start Point

Turn left at Blaisdell Rd



Image © 2007 New York GIS
© 2007 Navteq
© 2007 Europa Technologies

© 2005 Google

Pointer: 41°02'15.15" N 73°58'43.63" W

Streaming ||||| 100%

Eye alt 6502 ft



Convent Rd

Chestnut Cv E

Mountainview Ave

303

Carlton Rd

Edgewood Ct

Mountainview Ln

Parkway Dr S

Devon Dr

Burch Hill Rd

Nice Park Ln

Edgewood Ln

Old School House Ln

Turn left at RT-303

Orangeburg

Kings Hwy

Fern Cv E

Highview Ave

340

Greenbush Rd



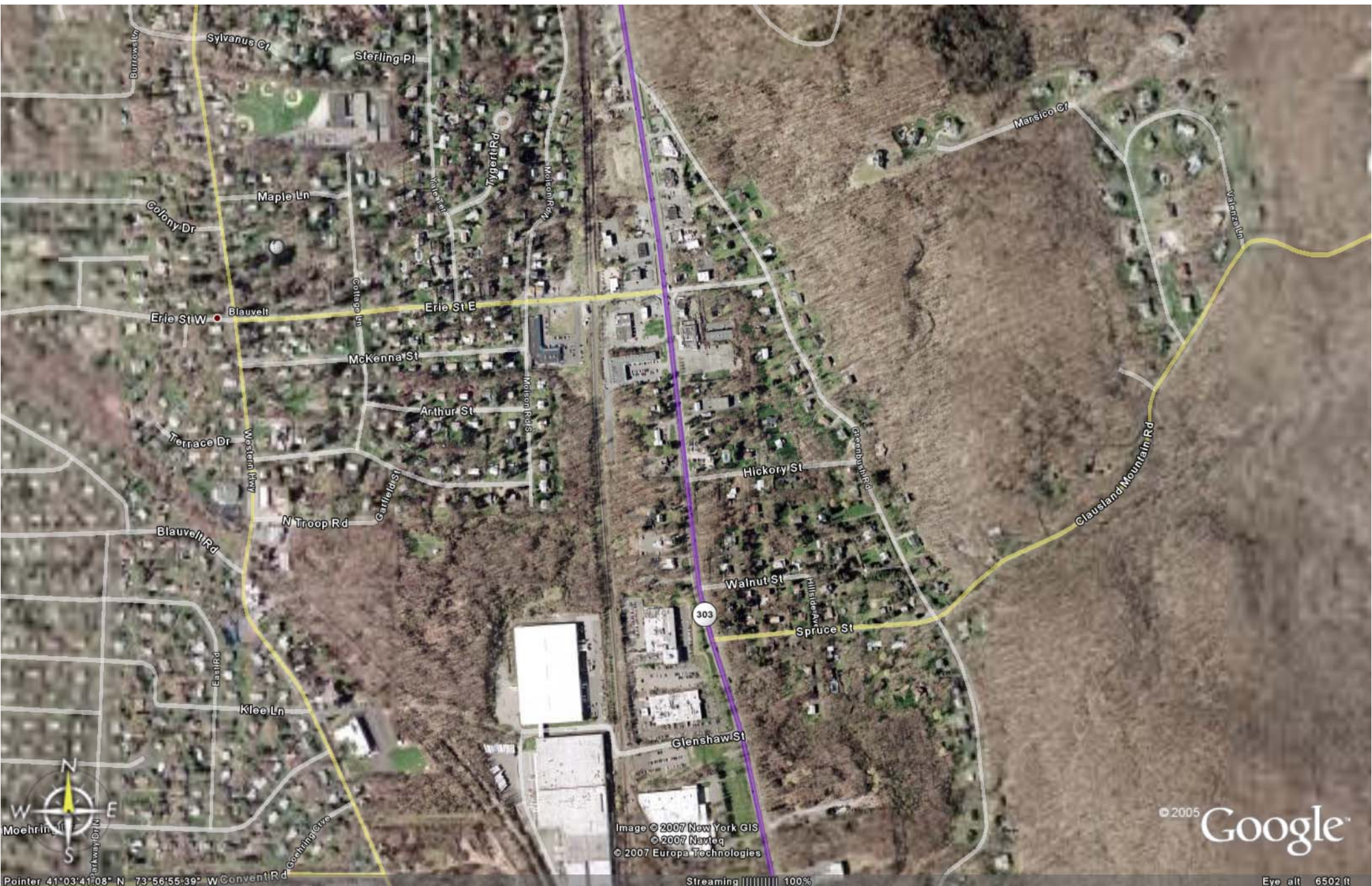
Image © 2007 New York GIS
© 2007 Navteq
© 2007 Europa Technologies

© 2005 Google

Pointer 41°02'55.72" N 73°57'18.15" W

Streaming 100%

Eye alt 6502 ft



Pointer 41°03'41.08" N 73°56'55.39" W Convent Rd
Moehring
S
W
E
N

Image © 2007 New York GIS
© 2007 Navteq
© 2007 Europa Technologies

© 2005 Google™

Streaming ||||| 100%

Eye alt 6502 ft



Piper Ct

John Calvin Dr

Thies Ln

Avis Ct

Corporate Dr

Whittier Rd

Pine Glen Dr

BradBradley Hill Rd

Sgt Parker Rd

Leber Rd

Reford Ln

Shorn Dr

Garber Hill Rd

Greenbush Rd

Valley Ter

Mason Rd N

Old Western Hwy

Weston Hwy

Ellsworth Dr

Holly Ter

303
Image © 2007 New York GIS
© 2007 Navteq
© 2007 Europa Technologies

© 2005 Google™

Pointer 41°04'26.48" N 73°56'57.98" W

Streaming ||||| 100%

Eye alt 6502 ft

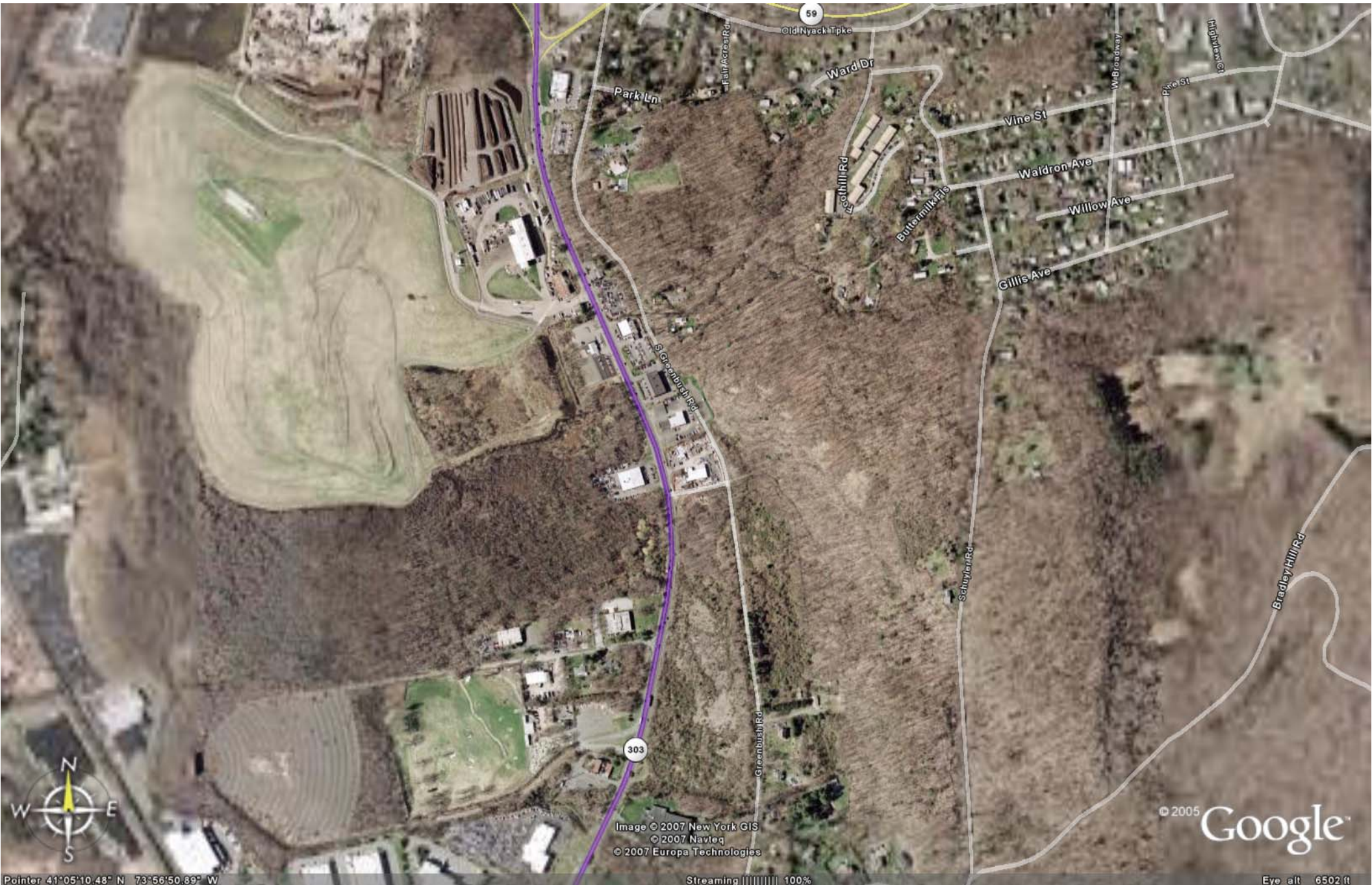


Image © 2007 New York GIS
© 2007 Navteq
© 2007 Europa Technologies

© 2005 Google™

Pointer 41°05'10.48" N 73°56'50.89" W

Streaming ||||| 100%

Eye alt 6502 ft

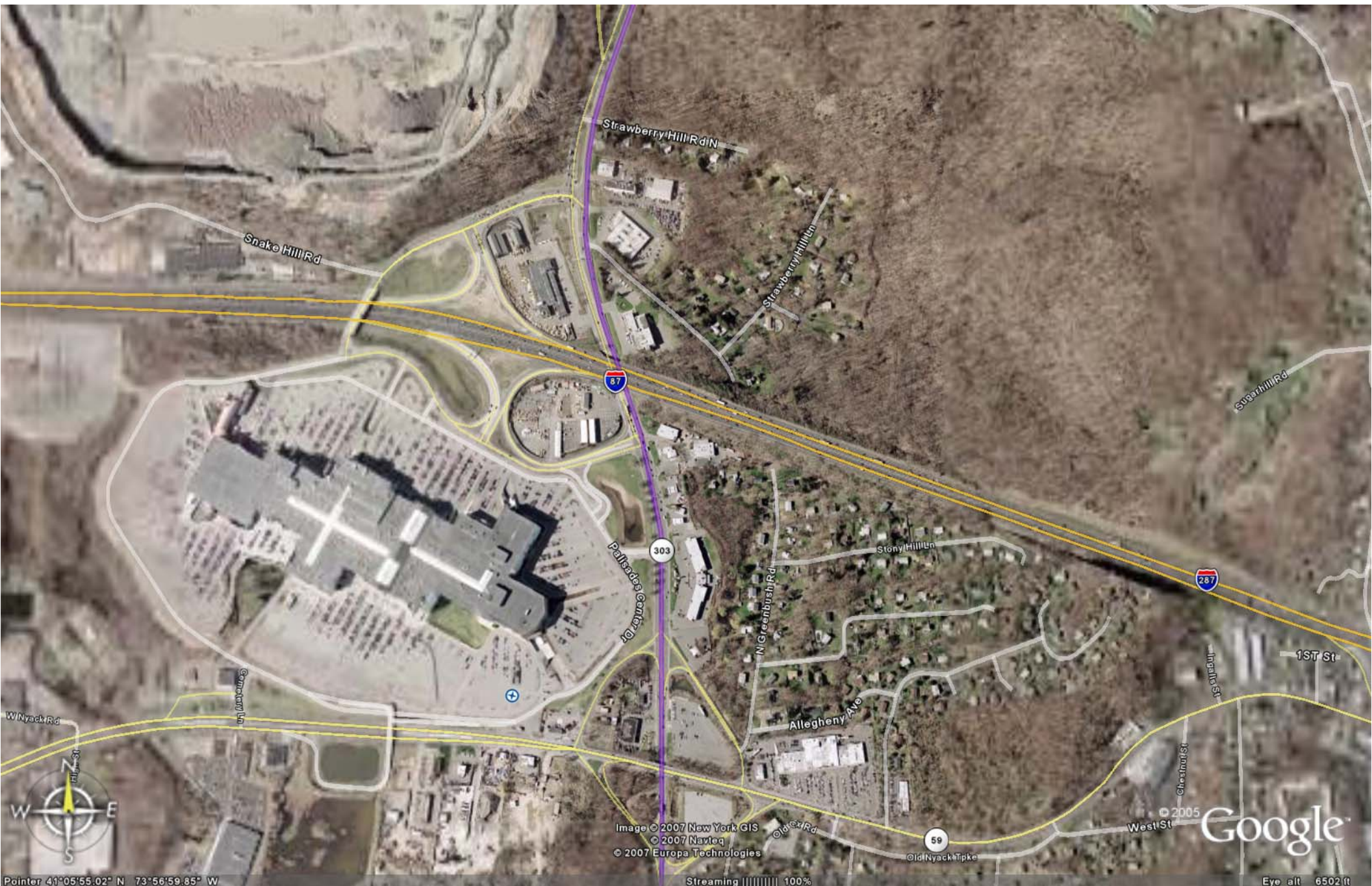


Image © 2007 New York GIS
© 2007 Navteq
© 2007 Europa Technologies

© 2005 Google

Pointer 41°05'55.02" N 73°56'59.85" W

Streaming ||||| 100%

Eye alt 6502 ft



Fuller Dr
 Hannah Ln
 Tamar Dr
 Park Ave
 Mitchell Dr
 Sherry Dr
 Manette Cr
 Joseph Dr
 Thomas Dr
 Mayfield St
 Abbey Ln
 Face of God Rd
 Brookridge Dr
 Manette Ln
 Jacqueline Dr
 Edsall Rd
 Hillside Ln
 Old Stone Rd
 Christian Herold Rd
 Van Doren Ct
 Storme Rd
 303
 Kinoshahky
 Ford Products Rd
 Crusher Rd
 Casper Hill Rd
 Mountainview Ave
 Bellview Dr
 Asa Ter
 Stearns St



Image © 2007 New York GIS
 © 2007 Navteq
 © 2007 Europa Technologies

© 2005
 Google
 Eye alt 6502 ft

Pointer 41°06'39.24" N 73°56'45.19" W

Streaming ||||| 100%



Image © 2007 New York GIS
© 2007 Navteq
© 2007 Europa Technologies

© 2005 Google™

Pointer: 41°07'24.46" N 73°56'24.14" W

Streaming ||||| 100%

Eye alt 6502 ft

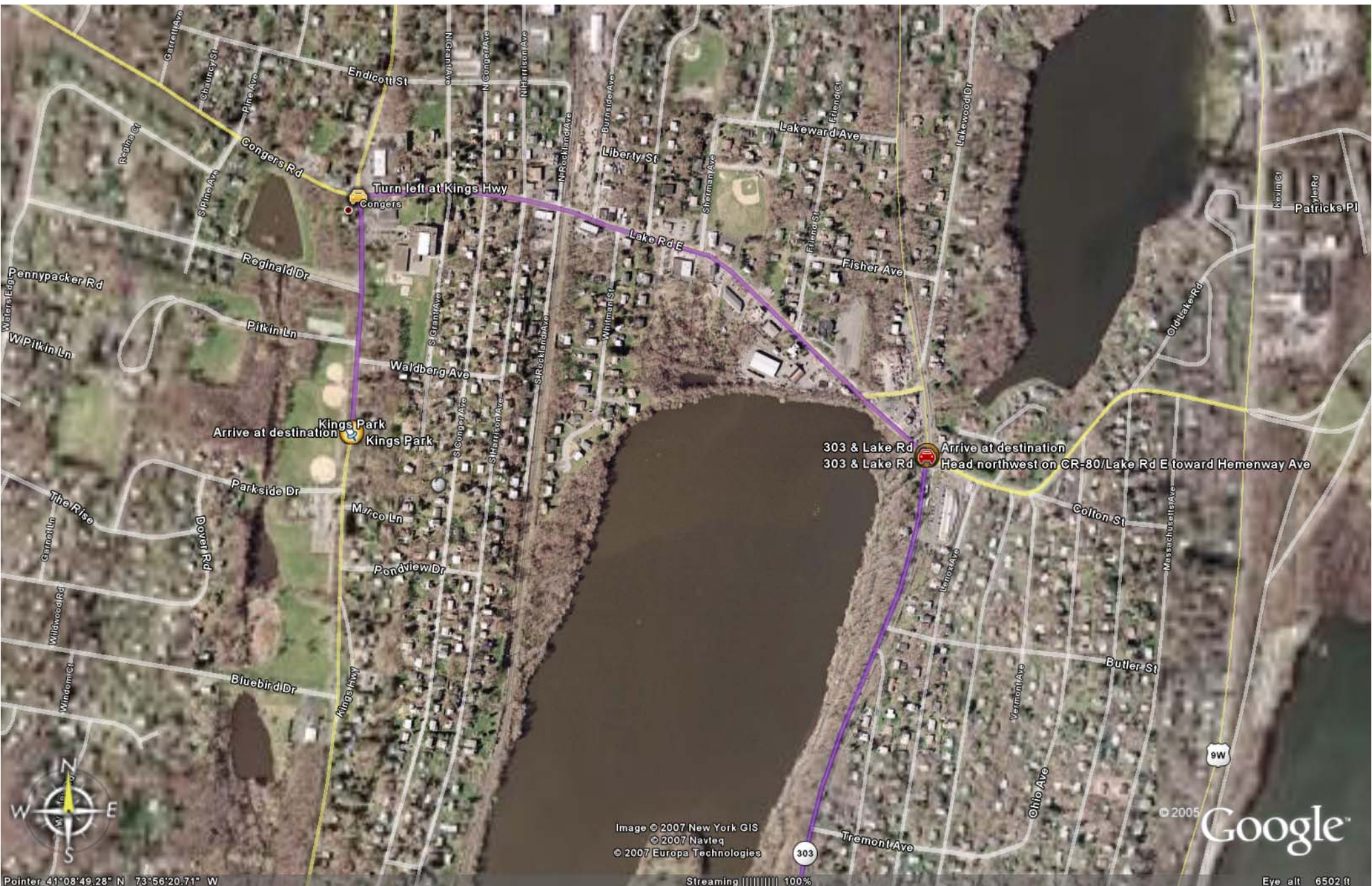


Pointer 41°08'09.50" N 73°56'13.85" W

Image © 2007 New York GIS
© 2007 Navteq
© 2007 Europa Technologies

Streaming ||||| 100%

Google 9W
Eye alt 6502 ft



Turn left at Kings Hwy

Arrive at destination
Kings Park

303 & Lake Rd
303 & Lake Rd
Arrive at destination
Head northwest on CR-80/Lake Rd E toward Hemenway Ave



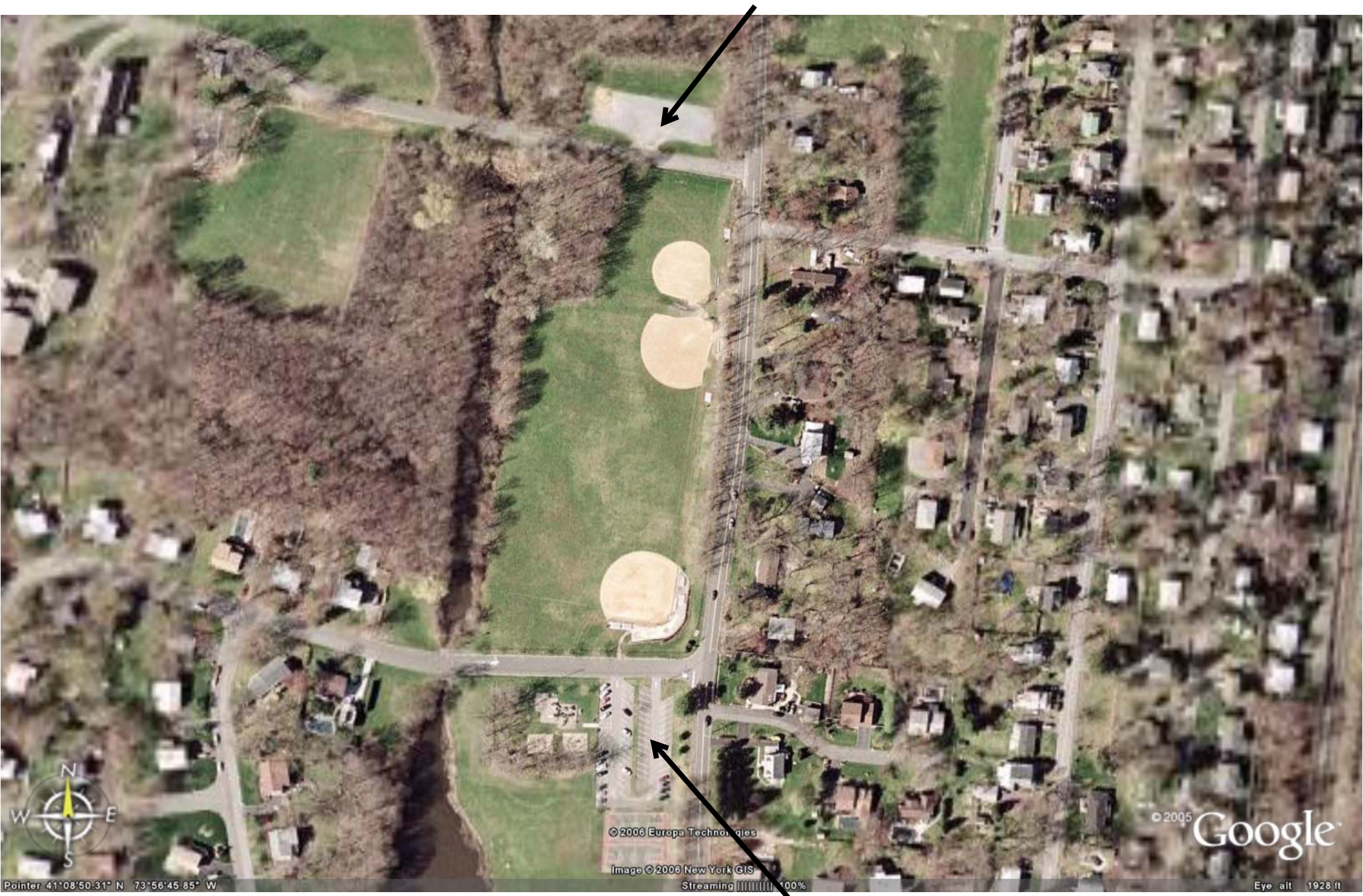
Image © 2007 New York GIS
© 2007 Navteq
© 2007 Europa Technologies

© 2005 Google

Pointer: 41°08'49.28" N 73°56'20.71" W

Streaming ||||| 100%

Eye alt 6502 ft



© 2006 Europa Technologies

Image © 2006 New York GIS

Streaming [|||||] 100%

© 2005 Google

Eye alt 1928 ft

Pointer 41°08'50.31" N 73°56'45.85" W