



# Commercial Server for Windows NT Guide

Version 4.0

Copyright © 1998 Electric Communities, All rights reserved.

*The Palace Commercial Server Windows NT Guide*, version 4.0

November, 1998

This document and the software described in it are furnished under license and may be used or copied only in accordance with such license. Except as permitted by such license, the contents of this document may not be disclosed to third parties, copied, or duplicated in any form, in whole or in part, without the prior written permission of Electric Communities.

The contents of this document are for informational use only, and the contents are subject to change without notice. Electric Communities assumes no responsibility or liability for any errors or inaccuracies that may appear in this book.

Restricted Rights Legend. For defense agencies: Use, reproduction, or disclosure is subject to restrictions set forth in subparagraph (c) (1) (ii) of the Rights in Technical Data and Computer Software clause at DFARS 52.227-7013, and or similar successor clauses in the FAR, or the DOD or NASA FAR Supplement.

Unpublished right reserved under the Copyright Laws of the United States.

The Palace Inc., The Palace, PalacePresents, Palace Authoring Wizard, PalaceEvents and PalaceServer are trademarks and The Palace logo is a registered trademark of Electric Communities. All rights reserved. All other trademarks are the property of their respective owners.

Printed in the USA.

# Contents

<b>Preface</b> .....	vii
Who should read this manual .....	vii
Sections of this manual .....	vii
Manual conventions.....	viii
Other sources of information .....	viii
<b>Chapter 1 Introduction</b> .....	11
<b>Chapter 2 Getting Started</b> .....	13
Requirements .....	13
Installing the server software.....	14
If you have a previous release .....	14
After you install .....	15
Launching the server .....	15
Configuring your server .....	16
TCP/IP tab .....	17
Directory.....	18
Control Server.....	20
Preferences.....	21
Password .....	25
License.....	26
Authenticate .....	27
Stopping the Palace server .....	28
Registering your site with the Palace Directory Pages.....	29
Registering with the Palace Directory .....	29
Customizing your site information.....	29
Testing your customized site information.....	29
<b>Chapter 3 Setting Up Server-Defined Avatars</b> .....	31
Overview.....	31
Including the default server defined avatars.....	31
Creating your own server defined avatars.....	32

---

<b>Chapter 4</b>	<b>Wizard and God Mode</b> .....	35
<b>Chapter 5</b>	<b>Iptscrae</b> .....	37
<b>Chapter 6</b>	<b>Authentication</b> .....	39
	What is authentication? .....	39
	Authenticator.pl .....	40
	Authenticating user names.....	40
	Using a custom authenticator.....	41
	Using authentication from the client .....	42
<b>Chapter 7</b>	<b>InstantPalace</b> .....	43
	What is InstantPalace? .....	43
	InstantPalace user requirements .....	44
	Installing InstantPalace .....	44
	InstantPalace parameters .....	45
	URL Addressable Rooms.....	47
	Templates .....	48
	PalacePresents events support .....	48
	Sound tab .....	49
<b>Chapter 8</b>	<b>Web Site Integration Kit</b> .....	51
	Overview .....	51
	Resources for your Web Site .....	52
	Web links to Palace software.....	52
	Links for your customers.....	52
	Palace artwork.....	52
	InstantPalace launch pages.....	52
	Resources for your Palace Administrator.....	52
	Register Your Site with the Real Time Directory Service .....	52
	Install PalacePresents Auditorium Moderator Console .....	53
	Iptscrae (scripting) Manual .....	53
	Palace Support .....	53
	Palace mailing lists .....	53
	Palace Troubleshooting and FAQs .....	53
	Palace Partner Program .....	53

**Index** .....55



---

# Preface

This manual describes how to create and maintain your Palace Commercial Server for Windows NT.

## Who should read this manual

This manual assumes you are familiar with Windows NT and have a fairly in-depth technical background. Also, it assumes you have installed and familiarized yourself with the Palace client (available on Windows NT/95 and Macintosh platforms).

## Sections of this manual

This manual has the following sections:

- *Introduction*  
This section introduces the Palace community and Palace personal server software.
- *Getting Started*  
This section guides you through installing, launching, and configuring your Palace server.
- *Setting Up Server-Defined Avatars*  
This section explains how to change the default roundhead avatar in your server for InstantPalace clients.
- *Wizard and God Mode*  
This section explains the Palace wizard and god modes, and how to enable them on your server.
- *Iptscrae*  
This section briefly describes the Palace Iptscrae Language, and how to get more information on it.
- *Authentication*  
This section describes how to set up authentication for clients accessing your server.

- 
- *InstantPalace*

This section describes the InstantPalace client.

- *Web Site Integration Kit*

This section describes how to set up web site integration with your server, either through the Apache server provided, or your own web server.

In addition, there is an index.

## Manual conventions

This manual has the following conventions:

- Code samples and text you enter are set in `Courier`, whether standing alone or embedded in the text.
- Technical terms appear in ***boldface italic*** in the text in their first appearance, usually accompanied by a definition.
- Graphical User Interface (GUI) elements, such as menu items and buttons, appear in **boldface**.
- References to other books, chapters, or sections are in *Italic*.

---

NOTE – Notes to the user look like this.

---

## Other sources of information

Besides this *Server for Windows NT Guide*, the Palace provides other online manuals; these are all available from the Palace website. The following manuals are especially useful:

- *User's Guide*. This manual describes how to use obtain, setup, and use the Palace client software. You will need the Palace client to perform wizard and god actions for your site. Both a Windows and Macintosh version are available.
- *Wizard's Guide*. Describes the responsibilities of a wizard, and details the Palace client's wizard interface, and wizard and god commands.
- *Iptscrae Language Guide*. This manual is a programming and language reference guide for the Palace Iptscrae language. Although most of the powers and options available to you as a Palace Operator are easy to learn and use, an endless number of advanced interactive tricks and shortcuts can best (or only) be achieved by mastering Iptscrae.

- *Moderator Guide*. This manual describes the Palace moderator, which you can use to run multi-user auditorium-like events on your server.

In addition to the Palace online manuals, check out these pages in the Palace website for support, information, and online documentation:

Palace Home Page:

<http://www.thepalace.com>

Palace Sites Listings:

<http://www.thepalace.com/welcome/sites/index.html>

Palace FAQ:

<http://www.thepalace.com/support/faqs/index.html>

Palace Downloads (software & Assets):

<http://www.thepalace.com/downloads/index.html>

Palace Documents (Manuals):

<http://www.thepalace.com/support/manuals/index.html>

Palace Tech Support:

<http://www.thepalace.com/support/>



# 1

# Introduction

Welcome to the Palace! The Palace technology provides software and tools that let web developers add graphical chat and event capabilities to existing Websites. But more than that, the Palace also is a diverse online world of communities that you can explore to socialize, learn from, and exchange ideas with other users.

The Palace server enables you to create your own Palace. Because it is extremely flexible, you can use your Palace for a wide variety of purposes. For example, you can set up a customer support center, a training center, or a store. You can also use it as a classroom or a place for a band's fan club to gather and listen to music.

With the Palace, you can get as deep as you want: detailed graphics and advanced scripting may require months of detailed and incremental development, while basic Palace environments may be set up in an hour or two. In fact, you can open your own Palace in minutes — without even changing an option or writing a single line of code!

The Palace community has three types of users:

- Palace **gods** are the superusers of their Palace servers. By default, you are a god of your own Palace, and can give this capability to others. Your role as the god superuser includes creating, maintaining, running and evolving your Palace Site. Palace gods possess a special set of commands, which are fully documented in the Palace *Wizard's Guide*. You execute god commands through your Palace client while connected to your server. To do this, you establish a god password for the client.
- Palace **wizards** are “power users” who have been entrusted with special powers and responsibilities on one or another Palace Server (including their own). They have the ability to create and destroy rooms, alter room-level Scripts, ban unruly users, and generally run the place. Some wizards lean more toward the *design* angle of the job, concentrating on creating new rooms and room-level Scripts, while others prefer the *social* angle, and spend their time hanging out in the Palace, keeping things moving, interesting, and within community standards.

Like god capabilities, wizard capabilities are enabled on the Palace client through a wizard password you establish for your site. You can let others be wizards by giving them this wizard password. Wizard capability is described in more detail in the Palace *Wizards Guide*.

- **Users** are the people who visit your and other Palace sites using the Palace client software. You can and should install the Palace client software (available from the Palace web site) to become a user of the Palace community. In fact, you need to use the Palace client to access other Palace sites, and also access wizard and god capabilities.

# 2

## Getting Started

This section covers the details of getting your Palace server online:

- *Requirements* on page 13
- *Installing the server software* on page 14
- *Launching the server* on page 15
- *Configuring your server* on page 16
- *Stopping the Palace server* on page 28
- *Registering your site with the Palace Directory Pages* on page 29

## Requirements

The Palace Commercial Server for Windows NT has the following requirements:

**RAM:** 3 MB for the server alone. The first 75 clients require about 400K more RAM, and about 800K for each 75 thereafter.

**Disk space:** Approximately 5 megabytes for the server and basic artwork. The amount of disk space required for your Palace Site initially depends on the number and size of the sounds and graphics you make available. For example, the files associated with running the traditional "Mansion" Palace will require around four megabytes, three-quarters of which is devoted to graphics and audio. You can obtain the art and sounds for the traditional "Mansion" Palace from The Palace Web Site.

The only file that will grow noticeably in size over time is your prop file (`Pserver.prp`). This file stores the binary data associated with all props used in your Palace by all members. This file can become quite large if your site becomes popular; it's not uncommon to hear of 10- or 15-MB propfiles. There are two ways to control the size of this file:

- Use the ``purge` or ``flushprops` command. ``Purge` is a wizard command and ``flushprops` is a god command that has been built into the system for prop maintenance. For more information see the *Wizard's Guide*.
- Make a backup copy of your `Pserver.prp` file, while it contains only those props you want it to contain. Periodically thereafter, you may overwrite your current propfile with the backup version.

---

NOTE – Do not copy the prop file while the Palace server is running. This may cause the server to crash, corrupting the prop file and negating any changes you have made in authoring mode.

---

It's a good idea to run the Palace server on a computer that isn't being used for other tasks, because this activity will slow down all processes running on that computer. Slower computers may certainly act as Palace servers, but they will not adequately support as many users as their faster cousins.

**Operating System:** Windows NT 4.0 or later.

**Client software:** You need to have a Palace client available to administer your site. Both a Windows NT/95 and Macintosh version are available for free from the Palace website.

## Installing the server software

The Palace server and its associated files come in a single easy-to-use package. Follow the directions below to set up your Palace server.

### If you have a previous release

If you have a release prior to 4.0.2, you should do the following steps:

1. Backup your `Pserver.prp` and `pserver.dat` files.
2. Pictures and sounds now reside in `Palaceserverroot\pub\pictures`. To retain your pictures and sounds, copy them to this directory.
3. After you install the server, open your client and use the god command ``picdir` to point to the `Palaceserverroot\pub\pictures` directory. For example, ``picdir *\pub\pictures`. See the *Wizard's Guide*, for detailed information on all wizard and god commands.
4. If you are using the http protocol for transferring pictures, reconfigure your web server alias (your web server may have different terms for this) for the new directory.
5. If you have an InstantPalace, reconfigure your web server to point to the InstantPalace pictures.



6. Install the Palace server software.
7. Restore your `pserver.prp` and `pserver.dat` files after installation to the *Palacerootdirectory*.

### ▼ To install the Palace NT server

1. Download the Palace Commercial NT server installation file from the Palace website Downloads page.
2. Exit all Windows applications.
3. Click the installation file icon on your desktop to start the installation process.
4. Enter your company name and user name when the setup prompts you.
5. The setup will prompt you for the folder to install Palace server into. Click **Browse** to change the folder and **Next** to continue.
6. The setup will prompt you to use the web site integration kit. This will allow you to use the http protocol for transfer of graphics and sounds, InstantPalace and advertising content.
7. The setup will ask you to confirm your installation folder, your web site integration, and your link to the pub folder. Click **Yes** to accept, or **No** to go back and change some of these options.
8. Enter your registration code when prompted. If you do not already have a registration code, enter `TDXXP-2J87G-RVXYQ-3C9PS`. This registration code allows up to three users at one time.

---

NOTE – Make periodic backup copies of your `pserver.dat` as well as your `pserver.prp` file; these files maintain the state of your rooms and everything in them. Before making backups of these files, stop the server.

---

## After you install

After you install, be sure to save your administrator and operator passwords right away for security. You can change these on the server's control panel, in the **Preferences** tab.

## Launching the server

To start your server, use the following steps:

1. Select **Settings, Control Panel** from the Start menu.

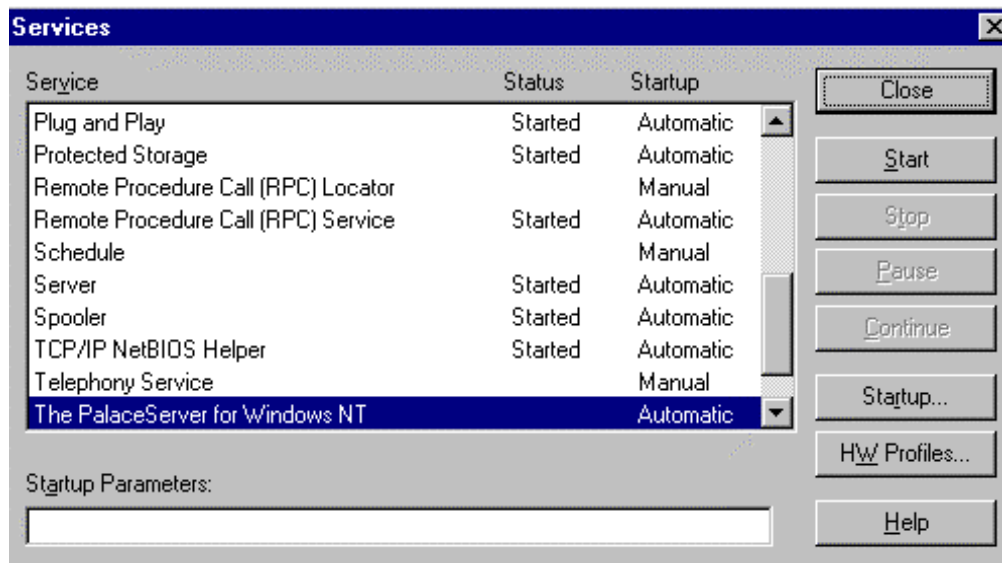


2. Double-click the **PalaceServer** icon.
3. The **PalaceServer** console window appears. On the **Control Server** tab, click **Start Server**.

You can check to see if your server is running using the following steps:

### ▼ Checking the status of the Palace server

1. Select **Settings, Control Panel** from the **Start** menu.
2. From the **Settings** window, double-click **Services**. This brings up the NT **Services** window.



3. Check the **Status** column. If it is blank, your service is not started.

### ▼ To change the Startup Options

1. Select **Settings, Control Panel** from the **Start** menu.
2. Click the **Services** icon.
3. Click **Startup**, then choose your option.

## Configuring your server

This section explains how to change the server's default settings. This displays the **PalaceServer** control panel.

## ▼ To bring up the PalaceServer control panel

1. Select **Settings, Control Panel** from the Start menu.
2. Double-click the **PalaceServer** icon.

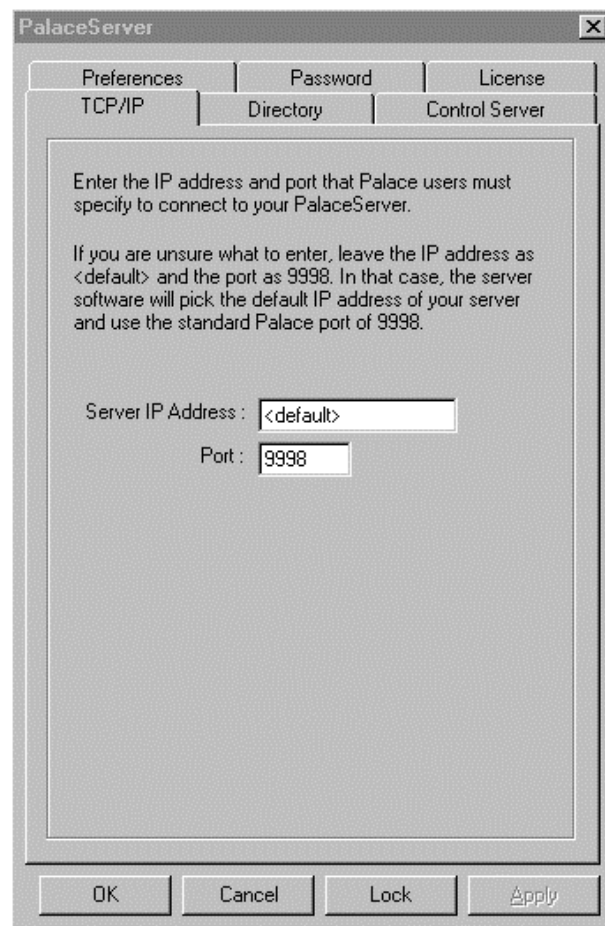


The **PalaceServer** control panel displays. This window has the following tabbed sections:

- TCP/IP
- Directory
- Control Server
- Preferences
- Password
- License

## TCP/IP tab

The TCP/IP tab allows you to enter your TCP/IP address and the port your Palace server uses.



This tab has the following fields:

- **Server IP Address**

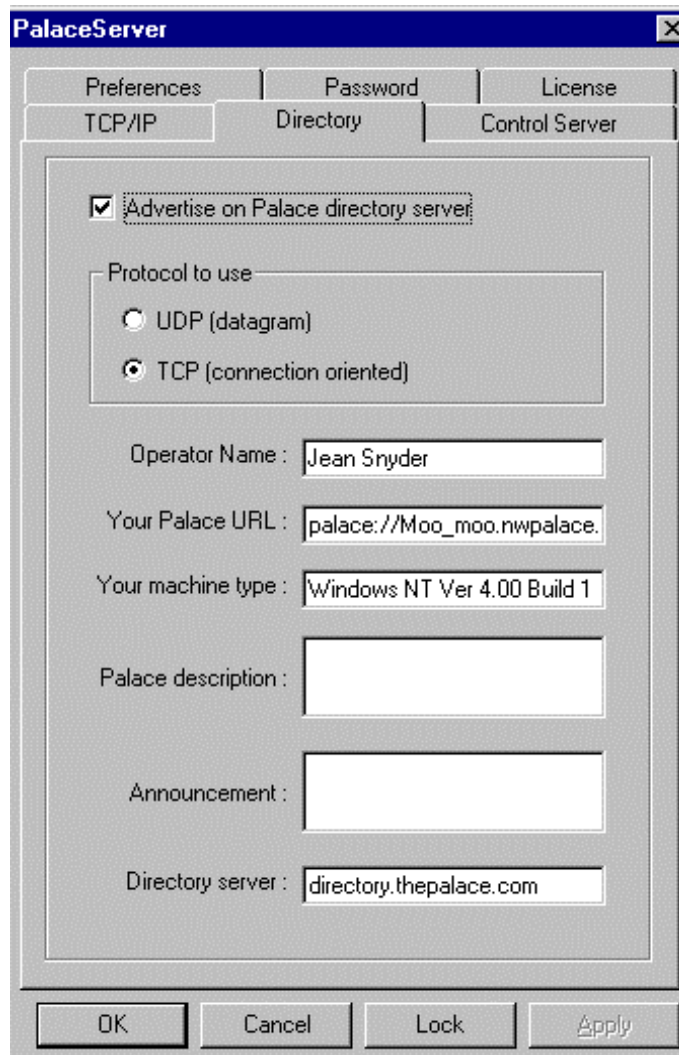
This provides the hub process of your Palace server with an IP address to bind to. If the computer hosting your Palace server has multiple IP addresses, enter your IP address here. Otherwise, leave it set for default.

- **Port**

This provides your Palace with a port and numeric IP address for its “frontend” -- the address made known to users. The default value is “9998”. You may also want to use 9997, the port officially licensed for Palace servers, and the one most likely to get through a firewall. You must specify one port.

## Directory

This tab section lets you configure your server settings on the Palace Yellow Pages Directory on the Palace website. This is a listing of all currently-running Palaces, along with a brief description if provided. Users can click on links to these Palaces to visit these sites.



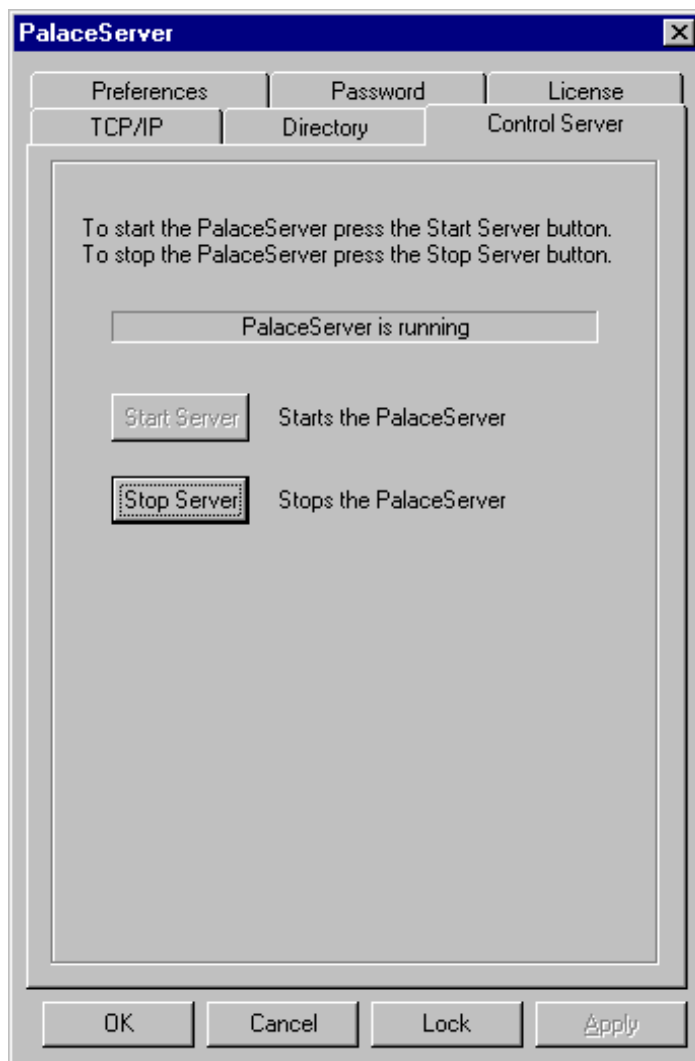
This tabbed section has the following fields.

- **Advertise on Palace Directory server**  
This option advertises your Palace server on The Palace's directory server.
- **Protocol to use**  
TCP (connection oriented) is the default.
- **Operator Name:**  
Your name is automatically inserted here from the system name.
- **Your Palace URL**  
This computer's URL is automatically inserted here.
- **Your machine type:**  
The version of Palace server is inserted here.

- **Palace description:**  
Enter a brief description of your Palace server here. This description will appear in the Palace directory.
- **Announcement:**  
Enter announcements of upcoming events here. This will also appear in the Palace directory.
- **Directory server:**  
directory.thepalace.com is automatically entered here.

## Control Server

The **Control Server** Tab enables you to start and stop your Palace server.



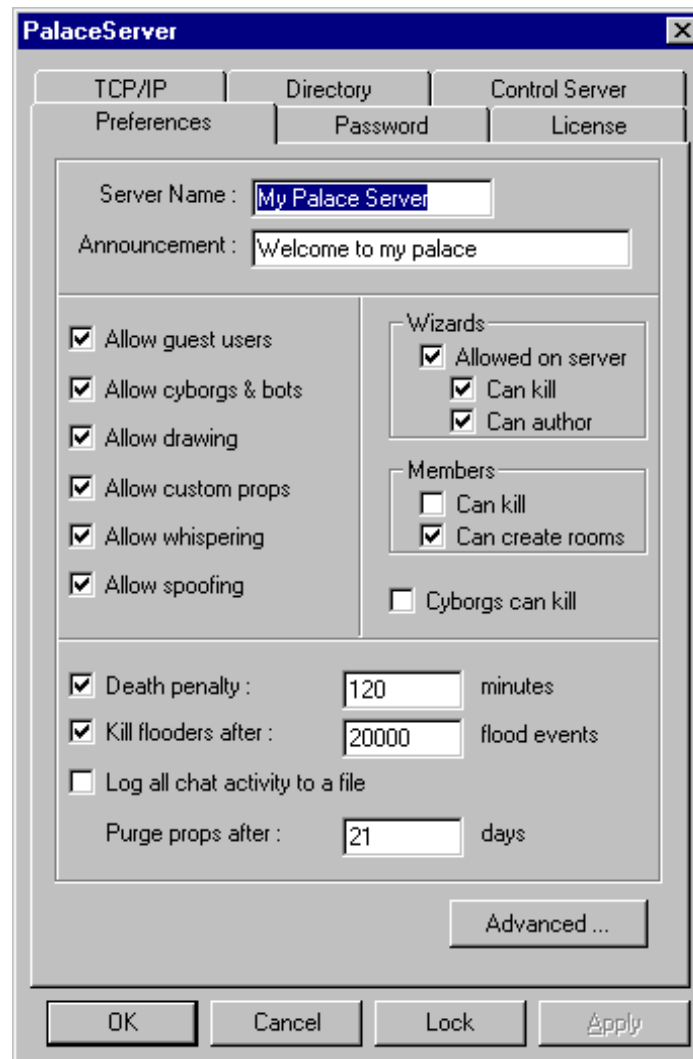
Click **Start Server** to start your server running. The Palace server automatically starts as a Windows NT service.

Click **Stop Server** to stop your server.

To check the status of your server as it's running, see the section *Checking the status of the Palace server* on page 16.

## Preferences

This tabbed section lets you set values for your server settings.



This tab section has the following fields.

- **Server Name**

Enter the name users will see when visiting your Palace. The default is `My Palace Server`.

- **Announcement**

Enter the announcement you would like users to see as they log onto your Palace server. `Welcome to my palace` is the default.
- **Allow guest users**

You have the choice of allowing guests on your Palace server. If you do not allow guest users, only Palace members will be able to attend your Palace. The default is checked.
- **Allow cyborgs & bots**

Allows scripted avatars on your Palace server. The default is checked.
- **Allow drawing**

Allows users to use the paint functions. Disabling this makes server maintenance easier. This option is ideal for a classroom or training Palace. The default is checked.
- **Allow custom props**

Allows props and avatars besides the server defined avatars. If this option is not checked, and no server defined avatars have been defined, only smiley faces will be displayed. The default is checked.
- **Allow whispering**

If Allow whispering is checked, users in your palace will be able to whisper to other users. The default is checked.
- **Allow Spoofing**

Spoofing allows you to "throw" your "voice". It appears your avatar's voice comes from somewhere else on the screen. The default is checked.
- **Wizards Allowed on Server**

Allows members to use the wizard password and gain wizard privileges while on your Palace server. Regardless of how this option is set, gods are allowed on the server. The default is checked. A user can only be a wizard or god on your server if you give them the correct password.
- **Wizards can kill**

Gives wizards the ability to kill members and guests on your Palace server. Regardless of how this option is set, gods are able to kill users. The default is checked.
- **Wizards can author**

Gives wizards the ability to script. Regardless of how this option is set, gods are allowed to author. The default is checked.
- **Members can kill**

Gives members the ability to kill other members and guests. The default is not checked.



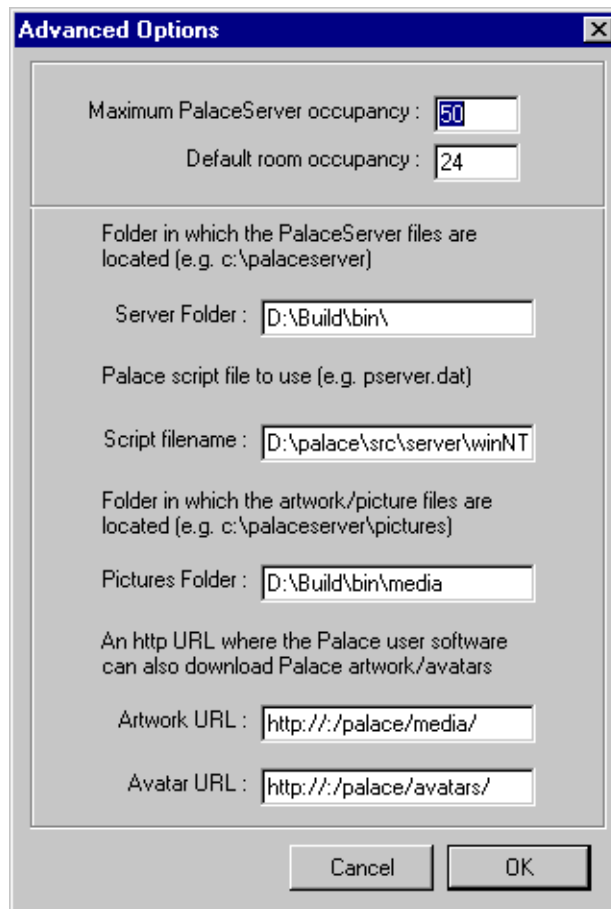
- **Members can create rooms**  
Gives members the ability to create member rooms. Member rooms exist until the room is empty or the creator logs off, whichever is last. The default is checked.
- **Cyborgs can kill**  
Gives cyborgs (scripted avatars) the ability to kill members or guests. The default is not checked.
- **Death Penalty**  
Sets the default death penalty. This is the period of time someone is killed for. The default is one hundred twenty minutes.
- **Kill Flooders after**  
A flooder is someone who continually sends requests to the Palace server. The default for this setting is 20000 flood events.
- **Log all chat activity to a file**  
The filename will be CHATLOG.YYMMDD, and a new chat file will be created every calendar day. If this is not checked, chat logging will be disabled. The default is not checked.

---

NOTE – These files will contain all chat messages, and will therefore tend to become quite large.

---

- **Purge Props After**  
Sets the amount of time, after which the Palace server automatically purges props in memory. The default is 21 days. The longer this is set for, the more memory it will use.
- **Advanced**  
Click this button to set additional settings. You access the following window:



This window has the following fields:

- **Maximum PalaceServer occupancy:**  
The default here depends on the number of users your license supports. To increase this number, contact The Palace.
- **Default room occupancy**  
The default room occupancy is 24. You can raise this if you want to get lots of people in one room, or you can lower it so there is more space available in each room.
- **Server Folder**  
This field displays the directory containing the Palace server files. You set this up during install.
- **Script filename:**  
`pserver.dat` is the default Palace script file. You can change this filename but you cannot specify the folder it is stored in.  
This displays the directory where the Palace server artwork and picture file reside. This is setup during installation.

- **Artwork URL:**
- **Avatar URL:**

These are URLs pointing to where the Palace client can download artwork. If you did not configure the PalaceServer for the website integration kit, and have an http server with the Palace artwork enter it here.

## Password

Use this tabbed section to set wizard and god passwords.

---

NOTE – You should set values for these passwords immediately after installing the Palace server software.

---



This window has the following fields:

- **Wizard password**  
Enter the password you would like your wizards to use to enter wizard mode. The default is Mark. You can accomplish the same thing with the ``wizpass` command.
- **God password**  
Enter the password you would like to use to enter god mode. The default is spitz. You can accomplish the same thing with the ``godpass` command. See the *Wizard's Guide* for more information.
- **Disconnect users after three consecutive invalid password attempts.**  
This option is highly recommended. Users who try to gain access to wizard (or god) mode are disconnected after three invalid attempts. The default is checked.

## License

The license tab contains your license number, your name and your company name.

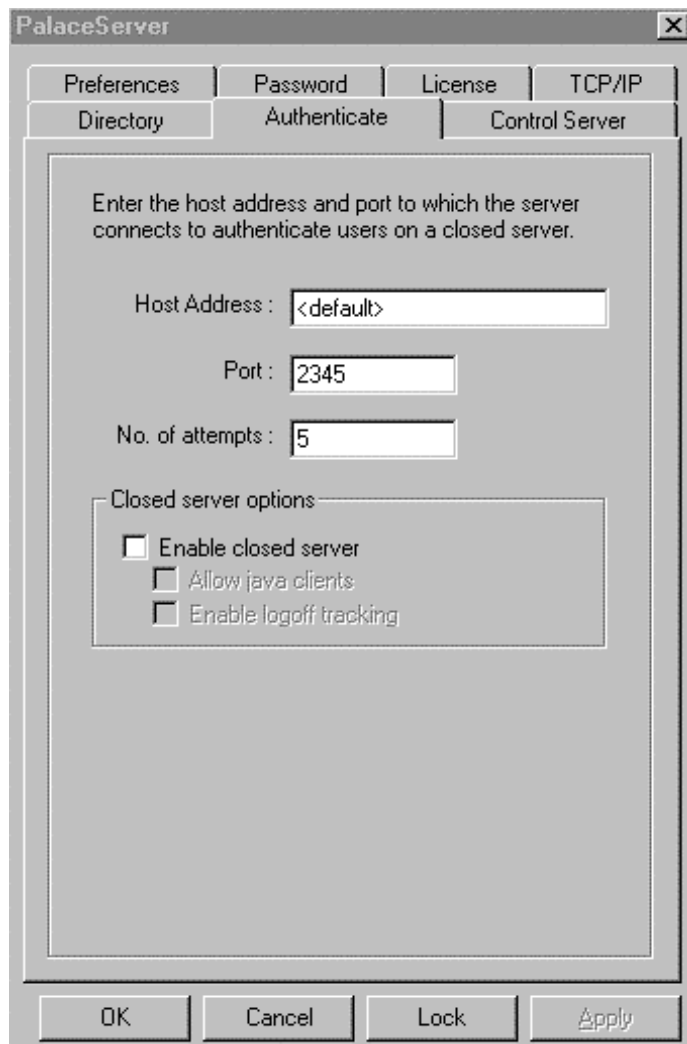


Your Palace server possesses a unique serial number used to identify the features and number of users your Palace server supports. If you do not supply a serial number to the installer, the Palace server will use a default 3 user number (PDXP-2J876-RVXYQ-3CAPS).

To enter or change your license number, click **Upgrade License**.

## Authenticate

This section lets you set values for your authentication option if you have purchased one. The authentication option requires user to enter a name and password upon connection to the Palace server. Entry is refused if a username or password is not valid. For information on setting up authentication, see *Authentication* on page 39.



The screenshot shows the 'PalaceServer' configuration window with the 'Authenticate' tab selected. The window contains the following elements:

- Tabbed interface with 'Authenticate' selected.
- Instruction: "Enter the host address and port to which the server connects to authenticate users on a closed server."
- Host Address: text box containing "<default>".
- Port: text box containing "2345".
- No. of attempts: text box containing "5".
- Section titled "Closed server options" containing three checkboxes:
  - Enable closed server
  - Allow java clients
  - Enable logoff tracking
- Buttons at the bottom: OK, Cancel, Lock, and Apply.

This section has the following fields:

- **Host Address**  
Enter the address of your authentication server. This is the server running your authenticator. The default is the same computer that's running your Palace server.
- **Port**  
This is the port number your authentication script uses. The default value is 2345.
- **No. of attempts**  
The default is 5. You can increase this to give people more chances to connect, or lower it to increase your security.
- **Enable closed server**  
Allows only people with the correct username and password to connect. The default is not checked.
- **Allow java clients**  
Allows InstantPalace clients to connect to your closed Palace server.
- **Enable logoff tracking**  
Tracks those who connects to your Palace server and how long they remain connected. This is useful if people have paid for a certain amount of time on your Palace server.

## Stopping the Palace server

You need to stop the Palace server to perform maintenance on your server or change its configuration. There are several methods of stopping the Palace server.

### ▼ To stop your Palace server remotely

1. Make sure nobody else is connected to your Palace server.
2. Connect to your Palace server from the Palace software (for Macintosh or Windows 95).
3. Select **Options, Wizard** and enter your god password to enter god mode.
4. Type the god command ``shutdown` and press Enter.

### ▼ To stop your Palace server from the Control Server tab

1. Make sure nobody is connected to your Palace server.
2. Select **Settings, Control Panel, PalaceServer** from the **Start** menu.



3. Select the **Control Server** tab.
4. Click **Stop Server**.

### ▼ To stop your Palace server using Services under Control Panel

1. Make sure nobody is connected to your Palace server.
2. Select **Settings, Control Panel, Services** from the **Start** menu.
3. Select the **The PalaceServer for Windows NT** Service.
4. Click **Stop**.

## Registering your site with the Palace Directory Pages

To help our Palace server customers promote their sites, we provide a real-time directory on our website of all active Palace server's and invite you to participate. This is called the Palace Yellow Pages Directory.

The following sections describe how you can customize the information you provide to the Palace Directory about your site and how to verify that the information is included in the directory.

### Registering with the Palace Directory

By default, your server is configured to register itself with the Palace Yellow Pages Directory. With this feature, the Palace server contacts the Directory, letting it know the information you provide about your server, as well as status information.

### Customizing your site information

Because your Palace Server is installed with only a generic description, you will definitely want to modify this information to provide an accurate and inviting description of your site!

Use the Directory tab to customize the information your server will provide for the Palace Directory. For information on this tab, see *Directory* on page 18.

### Testing your customized site information

After you complete your entries, make sure the Directory is receiving your updated site information.

### ▼ To check the Directory

1. Visit the Palace web site and go to the Directory page.
2. Look for your Palace server.

Remember that the directory lists in order of the number of people connected. It also may take a few minutes for your site to register, so try reloading the page in about 15 minutes if you don't see your Palace listed at first.

# 3

## Setting Up Server-Defined Avatars

This section describes how to set up InstantPalace default avatars:

- *Overview* on page 31
- *Including the default server defined avatars* on page 31
- *Creating your own server defined avatars* on page 32

### Overview

By default, your Palace server displays a "smiley face" for all guests and for members who are not wearing their own avatars. The Server Defined Avatars enable Palace server operators to provide an alternate set of images instead of the "smiley face" for InstantPalace users. For example, if your site is based on a science fiction theme, you could provide a set of alien creatures as default avatars.

Your Palace server includes a set of server defined avatars. You can use these, define your own, or decide not to use them at all. These avatars are available for InstantPalace clients only.

### Including the default server defined avatars

Your Palace server comes with a set of server defined avatars. After installing your Palace server, you will find the default guest avatars in the `\palaceserverroot\pub\avatars` directory.

#### ▼ To use the set of avatars that comes with your Palace server

1. Place the `cf26.gif` to `cf38.gif` files where your web server can access them.
2. Start your Palace client (for Macintosh or Windows 95/NT), and connect to your Palace server.
3. Enter god mode on your server (see *Wizard and God Mode* on page 35 for information).
4. Enter the following command in the client input box:

```
`AVATARURL http://server/directory/
```

where *server* is your web server or Palace server running web server software, and *directory* is the directory where your default avatars are.

---

NOTE – If you chose to activate the web support during installation, the server defined avatars will be available under the alias you made for the `/pub` directory.

No matter which option you choose, test it out before going live. Point your browser to the location you have the `AVATARURL` command pointing to. For example: `http://thepalace.com/avatars/cf26.gif`. One of the server defined avatar images should appear.

---

5. When a user logs onto your Palace server, they can choose from the 13 default avatars.

See the *Wizard's Guide* for more information on the `Avatarurl` command.

## Creating your own server defined avatars

You can also create your own avatars using the following steps. These avatar files must conform to the following guidelines:

- 44x44 pixels in size
- GIF files only
- transparency should be used

#### ▼ To create server-defined avatars

1. Create up to 13 44x44 pixel GIF files (1 for each avatar).
2. Apply the Palace Palette to each of the images created in step 1. You can obtain the Palace Palette from the Palace website.
3. Use a transparent background for the portions of the image you don't want visible.

4. Replace filenames `cf26.gif` through `cf38.gif` in the `/Palace/Pub/Avatars` directory with your custom images.

### ▼ To setup your server with guest avatars

1. Place the `cf26.gif` to `cf38.gif` files where your web server can access them.
2. Start your Palace client software (for Macintosh or Windows 95/NT), and connect to your Palace server.
3. Enter god mode (see *Wizard and God Mode* on page 35).
4. Enter the command: ``AVATARURL http://server/directory/`` where *server* is your web server or Palace server running web server software, and *directory* is the directory where your default avatars are.

---

NOTE – If you chose to activate the web support during installation, the server defined avatars will be available under the alias you made for the `/pub` directory.

No matter which option you choose, test it before going live. Point your browser to the location you have the `AVATARURL` command pointing to. For example: `http://thepalace.com/avatars/cf26.gif`. One of the server defined avatar images should appear.

---

When a user logs onto your Palace server, the user can choose from the 13 default avatars.

For more information on the `avatarurl` command, see the *Wizard's Guide*.



# 4

## Wizard and God Mode

Now that you have set up your Palace Personal Server, you can administer it online. For example, you might want to:

- Write scripts, add or modify rooms and test out your changes
- Do crowd control or enforce behavior standards

You can do this by going into **wizard** or **god** mode from the Palace client software. Wizards and gods both have their own set of commands to help them perform their functions. **Wizard** mode enables you to do things such as change room graphics, add scripting, and remove unruly visitors. The **god** mode enables you to do everything a wizard can do and regulate how much authority your wizards have. Commands for gods are more powerful than wizard commands. Wizard and god commands and capabilities are discussed in detail in the Palace *Wizard's Guide*, available from the Palace website.

The Wizard and god modes correspond to operator and administrator modes on the server.

You enable wizard and god capabilities on your server through passwords entered on the Palace client. You can do this either locally on your server machine, or remotely using a Palace client.

### ▼ To change the default password from the Palace server:

1. Select **Settings, Control Panel** from the **Start** menu.
2. Select **PalaceServer** from the Control Panel.
3. Click the **Password** tab.
4. Enter your new passwords for wizard and god.

You can change these passwords as required.

### ▼ To change the passwords from a remote machine

1. Connect to your Palace server using a Palace client.
2. Enter god mode using your current god password.
3. Enter the god new password with the following syntax:

```
'godpass <new password>
```

4. To change the wizard password, type:

```
'wizpass <new password>
```

To enter either wizard or god mode on your client, select **Wizard Mode** (or **Wizards** for a Macintosh client) from your Palace client's **Options** menu. In the resulting password dialog, enter the wizard or god password.

Wizard Mode remains in effect until:

- You turn it off,
- You disconnect from the current server, or
- A local god turns the Wizards Permission off.

---

NOTE – Your wizard status is not saved anywhere on the server. If you want to use wizard or god powers next time you sign on, you will have to enter the password again. This is a security feature; it keeps others who use your client from automatically becoming wizards themselves.

---

Your godhood remains in effect until:

- You turn Wizard Mode off, or
- You disconnect from the current server.

# 5

## Iptscrae

---

Iptscrae is the Palace's built in programming language. Using Iptscrae, together with your room graphics, sets the tone for your Palace. For example, a classroom Palace might use Iptscrae to reserve a spot for the teacher and remind you if you try to take that spot. In a store, like Egghead's Palace, you can include a link to your store catalog on your web site. A support Palace could use Iptscrae to direct people to the correct room.

To learn how to add such advanced elements to your Palace, see *The Iptscrae Language Guide* available online at the Palace web site.



# 6

# Authentication

---

This section describes the Palace server's authentication option.

- *What is authentication?* on page 39
- *Authenticator.pl* on page 40
- *Authenticating user names* on page 40
- *Using a custom authenticator* on page 41
- *Using authentication from the client* on page 42

## What is authentication?

Using authentication means you can have Palace **closed server**. Only members or guests who have the correct username and password can connect to a Palace server using authentication.

Clients will be allowed a variable number of attempts to connect to the server. After those attempts, if a valid username and password have not been entered, the client will receive an error message.

The authentication features consists of the Palace server, an authentication daemon and a Palace client. The Palace software for Windows 95 must be version 3.3 or higher to support authenticated entry. Go to the Palace website to get the current version.

## Authenticator.pl

The Palace authenticator is a PERL script distributed with the Palace server. The authenticator is installed into the *Palaceserverroot\authd* folder. To obtain PERL for Windows NT, go to

`ftp://ftp.ActiveState.com/Perl-Win32/Release/Pw32i310.EXE`

After you install the Palace server, associate the `.pl` extension with PERL, then start the authenticator.

### ▼ To associate your `.pl` files with PERL.EXE:

1. Run NT Explorer.
2. Navigate to the `c:\palaceserver\authd` folder.
3. Right-click the `authenticator.pl` file.
4. Select **Open With**.
5. Select `PERL.EXE`.

### ▼ To start the Authenticator

1. Double-click `Palaceserverroot\authd\authenticator.pl` from within the NT Explorer.
2. Start the Palace user software (for Macintosh or Windows 95), and connect to your Palace server.
3. Enter wizard or god mode on your client (see *Wizard and God Mode* on page 35).
4. In the client input box, type ``security host:port` to tell the Palace server where the authenticator is running.

The default port for the authentication daemon is 2345. You can change the default port with the control panel **Authentication** tab (see *Authenticate* on page 27).

## Authenticating user names

For a user to be able to use your server with authentication, his or her name must exist in the authentication password file. Set the user names and passwords of people to connect to your server in the Palace password text file `\authd\passwd.txt`. This is in the same directory as the `authenticator.pl` file. These values should be set in the following format.

```
USERNAME:PASSWORD:BLUE
```




---

NOTE – Later versions will implement groups using the color field.

---

## Using a custom authenticator

In addition to providing a very simple authenticator engine for use with the Palace, the PERL script is intended to provide an example program for those who wish to tie into existing authentication databases. You may use another authenticator, but it must respond to the following guidelines:

After querying the client for a username and password, the server connects to the authenticator and sends a message in the following format:

```
<number> : <number> : <username> : <password> \n
```

The authenticator should save, but not interpret the numbers. The Palace server uses the numbers to match responses with requests. The password is transmitted with the case preserved. The line is terminated with a newline.

The authenticator should verify the username and password and respond with:

```
<length byte> <number> : <number> : <auth> : <groups>
```

Component	Description
<length byte>	Length of the rest of the response.
<number>:<number>	Identification numbers supplied with the text.
<auth>	Set to 1 if the user is authorized; otherwise 0
<groups>	A colon-separated list of groups the user is a member of. The groups will only appear if the user is authorized. Full group implementation will appear in future versions.

### ▼ To start your custom authenticator

1. Navigate to the directory where you have installed your authenticator. Run it.
2. Start the Palace user software (for Macintosh or Windows 95) and connect to your Palace server.
3. Enter wizard or god mode on your client (see *Wizard and God Mode* on page 35).

4. In the client input box, type `\security host:port` to tell the Palace server where the authentication is running.

## Using authentication from the client

When a client tries to connect to a closed server, the closed Palace server will present the user with a dialog box for entering their username and password



The user should enter their username and password when prompted.

You can also include the username and password within the standard palace URL specification when using a link from your web site. The syntax is:

*Palace://username:password@host:port*

# 7

## InstantPalace

---

This section describes the InstantPalace client and has the following sections:

- *What is InstantPalace?* on page 43
- *InstantPalace user requirements* on page 44
- *Installing InstantPalace* on page 44
- *InstantPalace parameters* on page 45
- *URL Addressable Rooms* on page 47
- *Templates* on page 48
- *PalacePresents events support* on page 48

### What is InstantPalace?

InstantPalace is the Palace user software implemented as a Java applet. This means that instead of requiring users to download and install a separate piece of software, you can place InstantPalace directly in a web page and users who connect there can run it automatically. It is an effective way of rapidly getting people into your Palace site because it doesn't require a separate software download and installation process. This new and transparent method of distributing the Palace software can dramatically increase the ability for server operators to bring people into their Palaces.

You can make InstantPalace available with PalacePresents, with advertising, or just by itself.

The InstantPalace directories contain a number of HTML files that you can include directly on your website to get you up and running as soon as possible.

## InstantPalace user requirements

The existence of Java-enabled web browsers on a wide variety of hardware platforms means InstantPalace has the potential to run on a staggering array of platforms, including Macintosh, PC, UNIX, and even network computers and specialized appliances. Unfortunately Java virtual machines (the Java operating environment) have yet to reach a level of standardized operation to make this potential a reality.

**Operating system.** Windows 95 (90 MHz Pentium with 16MB RAM or better) or Windows NT (90 MHz Pentium with 32MB RAM or better)

---

**NOTE** – The Palace is a strong supporter of the Macintosh platform and is doing everything technically possible to make InstantPalace compatible with the Macintosh. We are currently limited by an incomplete Java implementation on this platform. However, we are hopeful that technology will catch up quickly. In the meantime, you are welcome to try InstantPalace using Microsoft Internet Explorer 3.01. You must have the Java virtual machine installed. Also, please be aware that your performance may be hindered and may not be comparable to the PC experience.

---

**Screen resolution.** Because the web browser consumes much of the screen area that would normally be available to the Palace user software, InstantPalace runs best on computers whose screen resolution is 800x600 or better. However, InstantPalace will run on a VGA (640x480) display. It detects VGA resolution, and it modifies the interface to fit into the display area. But because of the space limitations in VGA mode, the log, user list, and other tabbed dialogs obscure part of the Palace room image when the user decides to view them.

**Supported browsers:** Netscape Navigator 3.01 or higher (for Win95/NT) or Microsoft Internet Explorer 3.01 or higher (for Win95/NT).

To make InstantPalace available to your users, you must have the following installed and running:

**Palace server.** You must have your Palace NT server installed and running.

**A web server.** InstantPalace requires a web server to be installed and running on the same computer. The web server not only hosts the page containing the InstantPalace, it also delivers room art and a number of the user-interface components via the HTTP protocol. InstantPalace does not require the custom features of any particular web server.

## Installing InstantPalace

The InstantPalace files (including the applet) are installed into `pub\instantpalace` directory during the Palace NT server installation. Supporting files are included in `pub\html`. After installation, point your web server to `\pub` to access these files.

When you install the Palace NT server, the installation program lets you automatically configure the InstantPalace parameters. These parameters are listed in the following section.

## InstantPalace parameters

The InstantPalace applet file (`instantpal.html`) contains a number of parameters that must be configured for your server. The Palace NT server installation program gives you the option of automatically configuring these parameters. If you decided not to have the server installation set these parameters, or you wish to change them later, you can do so to customize the InstantPalace for your own site.

### Applet Size(in applet tag)

The default is 762,440.

### MODE

This parameter indicates which class files are to be downloaded, determining many of the features and the download size and time.

<PARAM name="Mode" value="CORE"> corresponds to the `pal_core.cab` class file.  
 <PARAM name="Mode" value="NO\_PP"> corresponds to the `pal_nopp.cab` class file.  
 <PARAM name="Mode" value="NO\_UI"> corresponds to the `pal_noui.cab` class file.  
 <PARAM name="Mode" value="FULL"> corresponds to the `pal_full.cab` class file.

Core is the standard InstantPalace download. This is the one to use if you have no PalacePresents events on your Palace and no advertising. The default mode is full.

### Room Window

Disable the Room Window if you want a text only chat. You can also size the room window, or move it around your screen. Particularly useful if you want to include it on a web page.

<PARAM name="RoomWindowEnabled" value="true"> Default is true.  
 <PARAM name="RoomWindowPos" value="x.y"> Default = 2,2  
 <PARAM name="RoomWindowSize" value="width,height"> Default =512x384

### Text Input Box

The Text Input Box allows you to enter questions or chat. You can move the input box around your screen, change the box size, change the font, or the font size.

<PARAM name="TextInputPos" value="x.y" > The default =2,388  
 <PARAM name="TextInputSize" value="width, height"> The default = 512,22  
 <PARAM name="TextInputFont" value="dialog"> The default = Courier  
 <PARAM name="TextInputFontSize" value="12"> The default = 12

### Status label

The Status label includes your name, how many people are in the room you are in, how many people are in the Palace you are in, and the room you are in.

You can disable this label, move it around your screen, change the size of it, change the font, or the font size.

```
<PARAM name="StatusLabelEnabled" value="true">
<PARAM name="StatusLabelPos" value="x,y">
<PARAM name="StatusLabelSize" value="width, height">
<PARAM name="StatusLabelFont" value="dialog">
<PARAM name="StatusLabelFontSize" value="12">
```

### **Button Panel:**

The Button Panel in Instant Palace can be moved removed from InstantPalace, moved, or sized according to your InstantPalace setup.

```
<PARAM name="ButtonPanelEnabled" value="true"> The default is true.
<PARAM name="ButtonPanelPos" value="x,y"> The default is 562,64.
<PARAM name="ButtonPanelSize" value="width,height"> The default is 200,100.
```

### **Tab Panels**

Each tab panel corresponds to a button. For example, the UserPanelEnabled parameter corresponds to the Users button above. If you set UserPanelEnabled to false, the Button panel has no Users button. Convenient if you want to limit your users choices.

```
<PARAM name="TabPanelFloats" value="false"> The default is false.
<PARAM name="TabPanelPos" value="x,y"> The default is 514,166.
<PARAM name="TabPanelSize" value="width,height"> The default is 252,272.
<PARAM name="LogPanelEnabled" value="true"> The default is true.
<PARAM name="UserPanelEnabled" value="true"> The default is true.
<PARAM name="RoomPanelEnabled" value="true"> The default is true.
<PARAM name="HelpPanelEnabled" value="true"> The default is true.
<PARAM name="AvatarPanelEnabled" value="true"> The default is true.
<PARAM name="EventsPanelEnabled" value="true"> The default is true.
<PARAM name="SoundPanelEnabled" value="true"> The default is true.
<PARAM name="PPTranscriptPanelEnabled" value="true"> The default is true.
<PARAM name="PPUserPanelEnabled" value="true"> The default is true.
<PARAM name="PPHelpPanelEnabled" value="true"> The default is true.
<PARAM name="PPAboutPanelEnabled" value="true"> The default is true.
<PARAM name="LogFont" value="Dialog"> The default is the Dialog font.
<PARAM name="LogFontSize" value="12"> The default is font size 12.
```

### **Nav Bar (Back and Forward buttons):**

The forward and back buttons can be enabled, disabled, sized according to your real estate needs or moved.

```
<PARAM name="NavBarEnabled" value="true"> The default is true.
<PARAM name="NavBarPos" value="x,y"> The default is 524,64.
<PARAM name="NavBarSize" value="width,height"> The default is 40,98.
```

### **Advertisement:**

Your advertisements can be enabled, disabled, moved or sized according to your needs.

```
<PARAM name="AdEnabled" value="true"> The default is true.  
<PARAM name="AdPos" value="x,y"> The default is 524,0.  
<PARAM name="AdSize" value="width,height"> The default is 270,60.
```

### **Intro Screens:**

The default on entering InstantPalace is to choose your name and avatar and either to enter InstantPalace or an InstantPalace tutorial. You can disable any or all of these.

```
<PARAM name="ChooseNameEnabled" value="true"> The default is true.  
<PARAM name="ChooseAvatarEnabled" value="true"> The default is true.  
<PARAM name="TutorialEnabled" value="true"> The default is true.
```

### **Speech Balloons:**

You can change the font and font size of your speech balloons. If you have a smaller InstantPalace, you may want to change to a smaller font size.

```
<PARAM name="BalloonFont" value="Dialog"> The default is the Dialog font.  
<PARAM name="BalloonFontSize" value="10"> The default is the font size 10.
```

### **Default User Characteristics:**

If users do not have the ability to choose a name or a default avatar, these parameters will decide the name and avatar. The name will be appended with a number. The default avatar range is from 0 to 12.

```
<PARAM name="DefaultName" value="Guest">  
<PARAM name="DefaultAvatar" value="0">
```

### **Room Addressable URL**

This parameter allows for URL addressable rooms. Without this parameter, you will be automatically dropped at the front gate.

```
PARAM name=entryroom value=" + roomID + "
```

## URL Addressable Rooms

URL Addressable rooms allow a client user to enter a room directly, rather than going first to the main gate. For example, this URL points to a main gate in a Palace:

<http://tardis.nwpalace.com/palacepub/instantpalace2/instantpal.html>

This URL points the user directly to room #3 of the same Palace:

<http://tardis.nwpalace.com/palacepub/instantpalace2/instantpal.html?entryroom=3>.

## Templates

InstantPalace has several predefined templates installed into the `\instantpalace` directory during the Palace NT server installation. If you choose to have the Palace NT installation configure the InstantPalace parameters automatically, you should be ready to try out these templates.

File	Description
<code>ipquick.html</code>	This is simple and quick configuration is a page that contains only the InstantPalace applet.
<code>ipauditorium.html</code>	This is a frameset configuration intended for running PalacePresents events. Individual frames are provided for the applet, a web-based presentation panel, and a panel to contain streaming media.
<code>ipads.html</code>	This is another frameset configuration designed to contain the applet and a set of advertising banners.

## PalacePresents events support

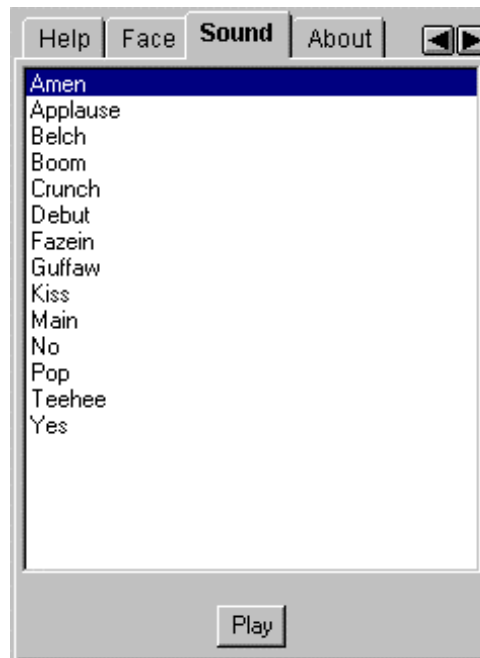
InstantPalace includes the ability to attend PalacePresents events. There is no additional setup required to view an event —your end-users will be automatically notified when events begin on your site. Please refer to the *PalacePresents Moderator Guide* for information on hosting events.

Additional considerations for InstantPalace events:

- InstantPalace requires the stage graphic image to be provided in the pictures directory on the PalaceServer. The PalaceServer setup copies the file `stage.gif` to this directory. If you create a custom stage image, copy it to this location.
- If you plan to broadcast web pages or streaming media, you can choose to run InstantPalace in a frame, with additional, sizeable frames for your web pages or streaming media. Examine the file `ippframes.html` for an example of how to do this. If you choose not to run frames, any web pages or streaming media you broadcast will be sent to a new browser window.
- The background GIF file used in the InstantPalace PalacePresents viewer window can be customized. This is not the Stage background GIF, but rather a background picture that sits behind the stage. The default picture is a black background with the Palace logo. To replace it, replace the file `ppbkgd.gif` in the `appletdata\resource` directory with another file of the same name. The replacement GIF should be 512 pixels wide by 384 pixels high. There are no palette restrictions for this file.

## Sound tab

InstantPalace displays a list of sound names in the **Sound** tab.



InstantPalace sounds must be in the standard Java format, which is a special case of the .au format. Regular Palace sounds use the .WAV format, so your existing sounds must be converted. You maybe able to find tools to convert sounds between file types on the Internet.

Sun .au format with the following properties

- 8-bit
- $\mu$ law
- 8000Hz (8kHz)
- one-channel

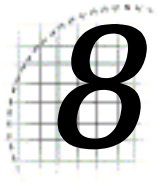
This installation includes several basic sounds that are located in the sounds directory. The applet formulates a URL to retrieve the sound files as follows:

```
http://yourmachineipaddress/instantpalace/sounds/Sound.au
```

Make sure to end the sound filenames with the .au extension.

These names are drawn from the `soundlist.txt` file in the sounds directory. Do not delete this file. However, feel free to edit it if you add sounds to or remove sounds from your Palace. The file consists of the sound names, in the order they will be displayed, each on a separate line. Only sound names in this file will be displayed in the InstantPalace sound tab. If you add a sound that's not available to users of the Macintosh and Windows software, only the InstantPalace users will hear it. You should maintain both formats - .wav and .au so both types of clients can play the sounds.





# Web Site Integration Kit

This section describes the Palace server website integration feature:

- *Overview* on page 51
- *Resources for your Web Site* on page 52
- *Resources for your Palace Administrator* on page 52

## Overview

The Palace web site integration kit is a series of HTML pages designed to make it easy for you to integrate the Palace with your website. This kit gives you the tools to:

- Prominently display your Palace on your web site
- Get help with your Palace server when you need it

When you install the Palace server, the Palace Web Site Integration Kit installs to `\Palace\Pub\HTML` and consists of two parts:

- Resources for your web site. These include links and artwork for your web site.
- Resources for your Palace Administrator. These include links to our web site where you can obtain the answers and help you need.

This kit also includes the PalacePresents Moderator.

To launch the integration kit, open `index.html` from your `\palace\pub` directory.

## Resources for your Web Site

You can include any of these pages on your web site as they are, edited, or you can copy the cool buttons and the links onto other pages on your web site.

### Web links to Palace software

This page is intended to provide a simple entry point to your Palace resources. It includes links for your InstantPalace installation, the Palace software for Macintosh or the Palace software for Windows 95/NT. It also includes a link for becoming a member.

### Links for your customers

This page links to our events calendar and directory of other Palaces.

### Palace artwork

Links to a page on our web site containing a series of graphics images you are welcome to use on your web site.

### InstantPalace launch pages

This page includes links to various example pages that launch your local installation of InstantPalace. Since InstantPalace is housed in a web page, you have a great degree of flexibility in customizing the look and feel of your presentation. We have provided examples for use in plain vanilla form, with PalacePresents and advertising.

## Resources for your Palace Administrator

These are links you may find useful for support when you need it.

### Register Your Site with the Real Time Directory Service

This page includes information on registering your site with the Palace Yellow Pages Directory service. This service is automatically updated every ten minutes.



## Install PalacePresents Auditorium Moderator Console

Links to the latest version of the PalacePresents Moderator and the online Moderator documentation.

## Iptscrae (scripting) Manual

A link to Iptscrae Language Guide, the Iptscrae Online documentation. You will find this an invaluable resource when scripting your Palace server.

## Palace Support

How to contact The Palace for Technical or Customer Support. Support is available by Palace, discussion forums), or telephone.

## Palace mailing lists

Here are all the mailing lists you can subscribe to, to get help from other Palace server owners and to help other Palace server owners.

## Palace Troubleshooting and FAQs

This includes all of the Troubleshooting and FAQ information our technical support department has put online for 24 hour access. Look here first for help!

## Palace Partner Program

Are you interested in developing other people's Palace servers? Go here for more information on our partnership program.



---

# Index

## A

- administer server 35
- Advertise on Palace Directory server 19
- Allow custom props 22
- Allow cyborgs & bots 22
- Allow drawing 22
- Allow guest users 22
- Allow Spoofing 22
- Allow whispering 22
- Announcement 22
- Authenticate tab 27
- authentication 27, 39
  - associating user names 40
  - script 40
  - start 40
  - using custom 41
- authenticator.pl 40
- authoring 22
- avatar
  - create 32
  - set up server-defined 31

## B

- bots, allow 22

## C

- chat, log to file 23
- check status of server 16
- closed server 28, 39
- configure server 16
- Control Server tab 20
- custom props 22
- cyborgs
  - allow 22
- Cyborgs can kill 23

## D

- Death Penalty 23
- Directory 29
- directory of Palaces 18
- drawing, allow 22

## F

- flooders, kill 23

## G

- god 35
  - change password 35
- God password 26
- guests, allow 22

## I

- installation 14
- InstantPalace 43

- allow clients 28
- create avatars 32
- installation 44
- parameters 45
- requirements 44
- set up avatars 31
- sounds 49
- templates 48
- URL-addressable rooms 47
  - with PalacePresents 48
- IP address 18
- Iptscrae 37

## K

- Kill Flooders after 23
- kill, allow 22, 23

## L

- License tab 26
- Log all chat activity to a file 23

## M

- Members can create rooms 23
- Members can kill 22

## N

- name of server, set 21

## O

- Operator Name 19

## P

- Palace directory 18
- Palace server
  - administer 35
  - after you install 15
  - allow cyborgs and bots 22
  - allow cyborgs to kill 23
  - allow guests 22
  - allow member rooms 23
  - allow members to kill 22
  - allow props 22
  - allow whispering 22
  - allow wizard authoring 22
  - allow wizards to kill 22
  - authenticate tab 27
  - authentication 39
  - change startup options 16
  - change TCP/IP 17
  - check status 16
  - configure server 16
  - Control Server tab 20
  - create avatars 32
  - death penalty 23
  - define server avatars 31

- directory 18
- drawing 22
- installation 14
- InstantPalace 43
- kill flooders after 23
- log chat to file 23
- passwords 25
- preferences 21
- prop file 13
- purge props after 23
- register with directory 29
- requirements 13
- set announcement 22
- set name 21
- spoofing 22
- start 21
- start and stop 20
- start server 15
- stop 21, 28
- upgrade license 26
- upgrading 14
- website integration 51
- wizards, allow 22
- Palace Yellow Pages Directory 18, 29
- PalacePresents, with InstantPalace 48
- PalaceServer control panel 16
- parameters, InstantPalace 45
- passwd.txt 40
- password
  - authentication 40
  - change wizard and god 35
- Password tab 25
- Port 18
- Preferences tab 21
- prop 23
- prop file 13
- props, allow 22
- Protocol to use 19
- PServer.prp 13
- purge 23
- Purge Props After 23

## R

- register server 29
- requirements 13
  - for InstantPalace 44
- room, allow member 23

## S

- server, administer 35
- Server IP Address 18
- Server Name 21
- server, see Palace server
- server-defined avatars 31
- sound, for InstantPalace 49
- sppofing 22
- start server 15, 21
- startup options, change 16
- status of server, check 16
- stop server 21, 28

## T

- TCP/IP tab 17
- templates, InstantPalace 48

## U

- Upgrade License 27
- upgrading 14
- user, authenticating 40

## W

- website integration 51
- whispering, allow 22
- wizard 35
  - change password 35
- Wizard password 26
- Wizards Allowed on Server 22
- Wizards can author 22
- Wizards can kill 22