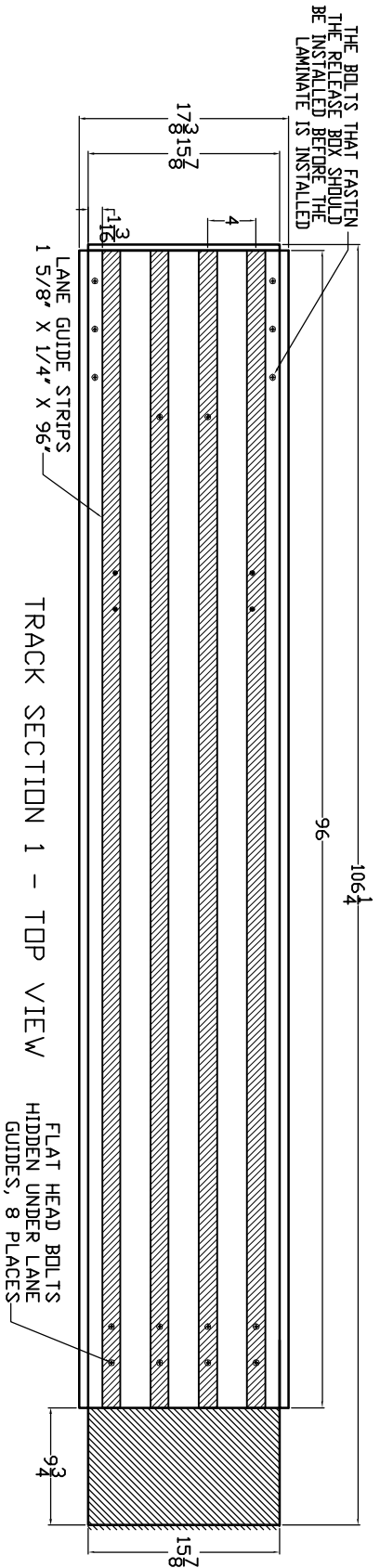


THE BOLTS THAT FASTEN THE RELEASE BOX SHOULD BE INSTALLED BEFORE THE LAMINATE IS INSTALLED



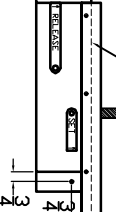
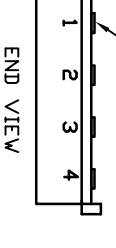
LANE GUIDES

DASHED LINE SHOWS TRACK SURFACE

1 5/8" DRYWALL SCREWS DRILL AND COUNTERSINK AT 6" SPACING (#46)

TONGUE AND GROOVE SPLICE WITH LATCH

TRACK SECTION 2



TRACK SECTION 1 - SIDE VIEW

TRACK PART 1K

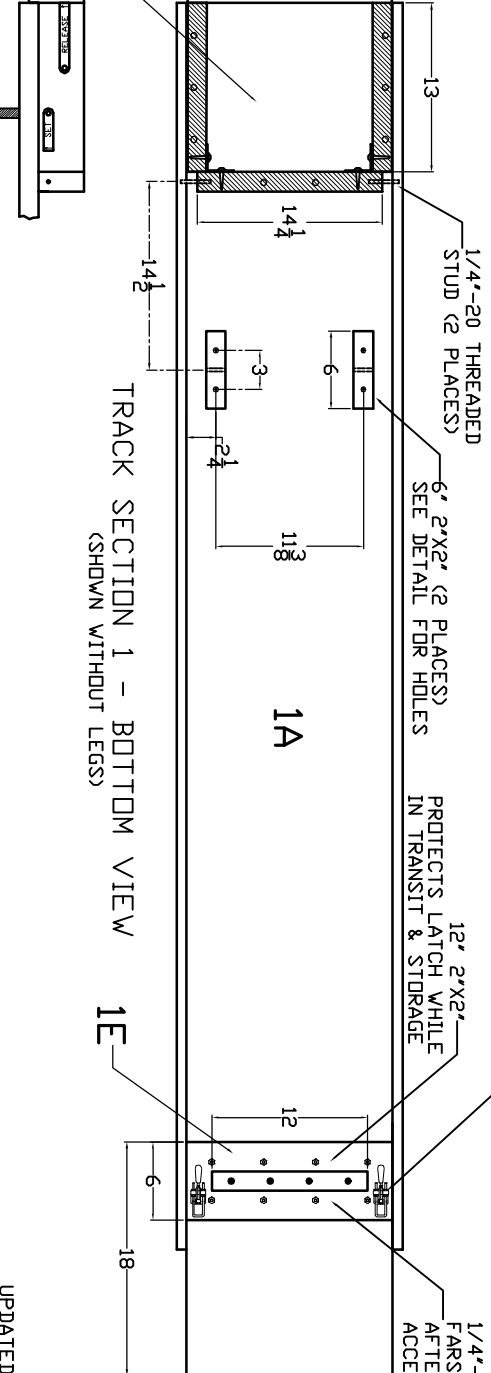
TRACK PART 1E

OVER-CENTER LATCH 2 PLACES

1/4"-20 BOLT, FLATHEAD ON FAR SIDE, 8 PLACES. INSTALL AFTER LAMINATE FOR REPAIR ACCESS LATER.

RELEASE MECHANISM DETAIL SHOWN IN ANOTHER VIEW

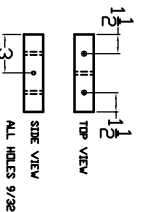
1/2" PLYWOOD END COVER PLATE 3 1/2" X 15 7/8" PART 'S'



TRACK SECTION 1 - BOTTOM VIEW (SHOWN WITHOUT LEGS)

1E

1K LEG BLOCK DETAIL



TRACK SECTION 1

UPDATED 20 DEC 2000
LARRY BOSWORTH