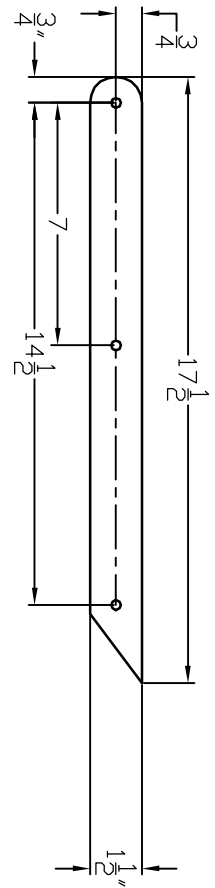


ALL HOLES 17/64"  
 ALL SCREWS ARE 1 5/8"  
 COUNTERSUNK DRYWALL (#46)  
 ALL WOOD IS 1X2 CUT  
 AND SANDED (#4)



TRACK UPPER SUPPORT LEGS

UPDATED 18 JAN 2000  
 LARRY BOSWORTH