

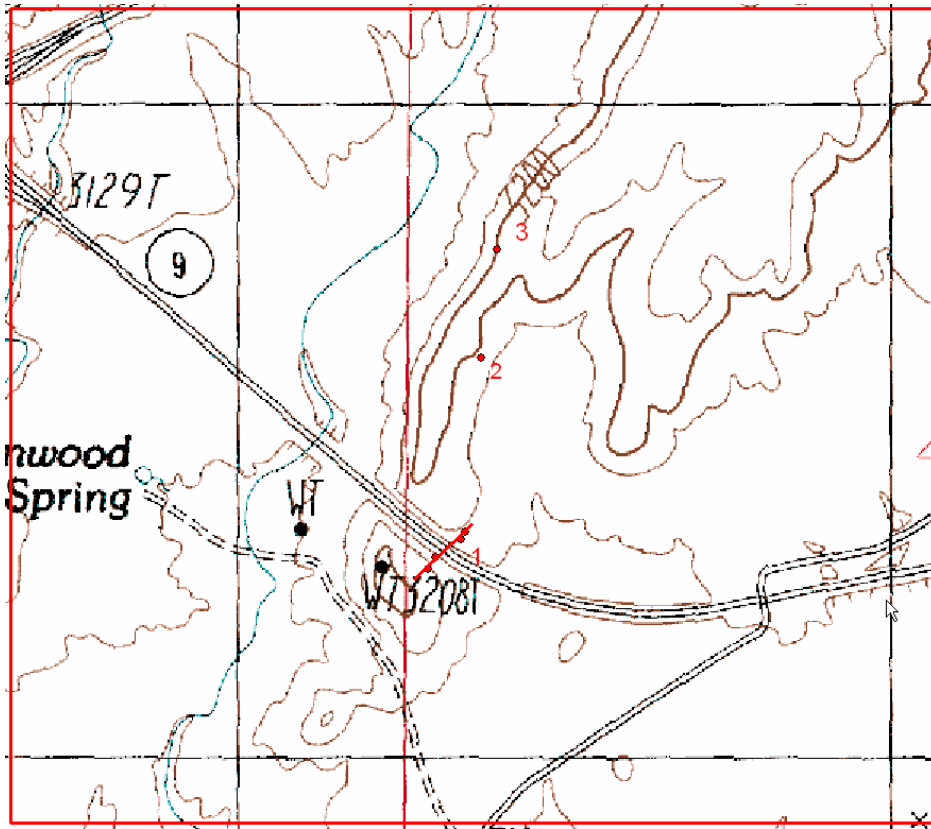
MIDDLE	Carmel Formation	Co-op Creek Limestone Member	Jco	130-200 (40-60)
	Temple Cap Formation	Sinawa Member	Jts	220 (67)
JURASSIC	Navajo Sandstone		Jn	2,000-2,300 (600-700)
	Kayenta Formation		Jk	935 (285)
	LOWER	Springdale Ss Mbr	Jms	95 (29)
Whimore Point Mbr		Jmw	61 (18)	
Dinosaur Canyon Member		Jmd	200 (60)	

GEOLOGIC MAP OF THE HARRISBURG JUNCTION 7.5' QUADRANGLE
WASHINGTON COUNTY, UTAH
by
Robert F. Biek
2003



No.	Description
1	Point locations indicating fault direction, top of bedrock along north cut slope at elevation 3150
2	Outcrop at elevation 3190
3	top of bedrock in bottom of dozer exploration trench elevation 3200

Digital Ortho Quad of Harrisburg Junction 7.5' Quadrangle April 1999



HARRISBURG JUNCTION, UTAH
PROVISIONAL EDITION 1986

37113-B4/11-024