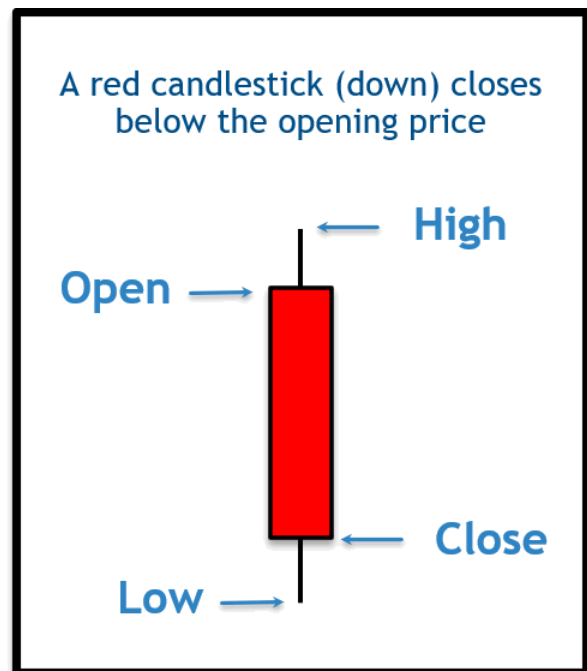
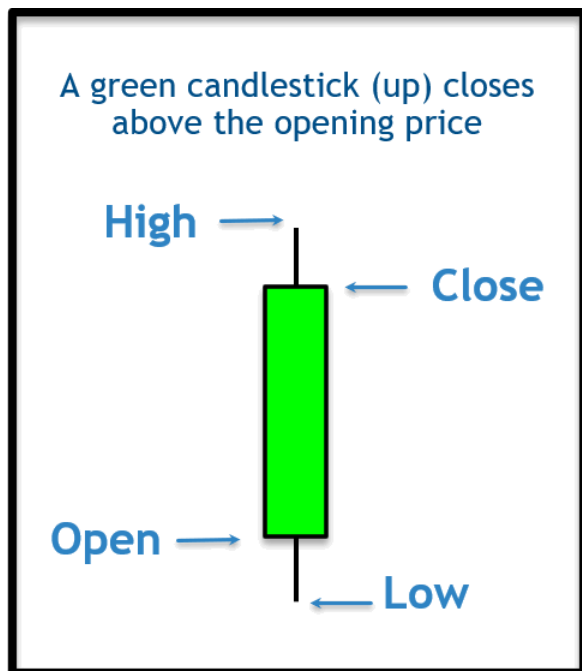


Basic Candlestick:-

A Candlestick contains four components: open, high, low, and close.



Open= Price at the beginning of the period.

Close= Price at the end of the period.

High = the maximum price achieved during that period

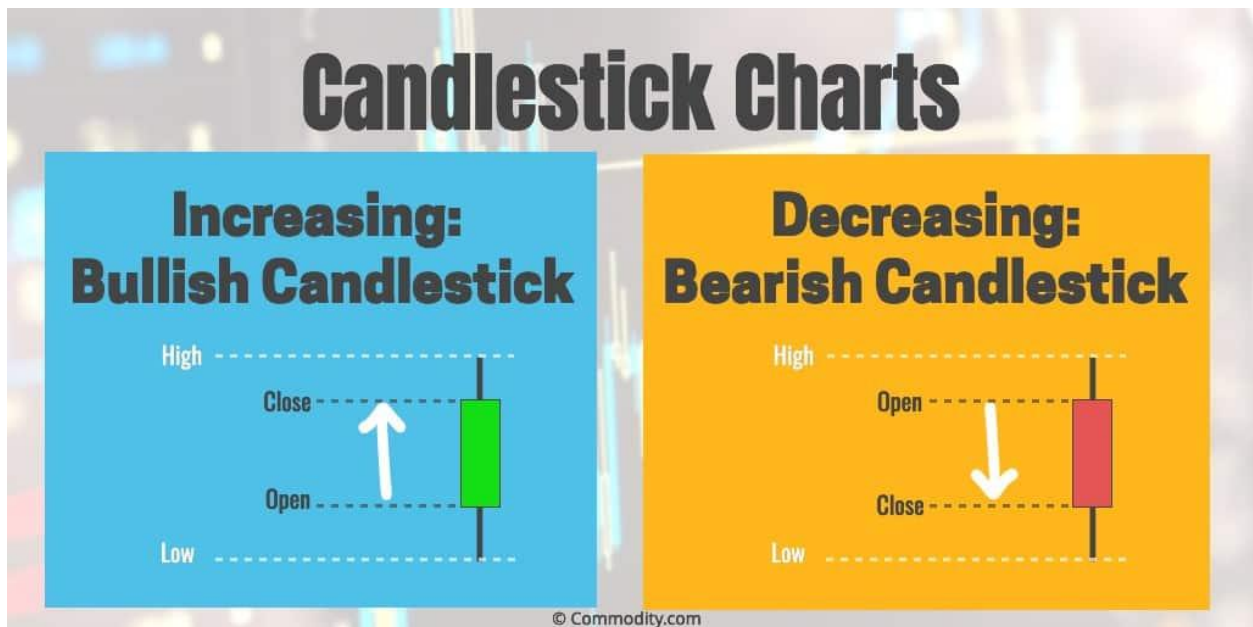
Low = the lowest price of the asset during the period

How to Interpret Price Movement on a Candlestick Chart

There are two basic candlesticks which are illustrated on the image above:

Bullish Candle: When the close is higher than the open (usually green or white)

Bearish Candle: When the close is lower than the open (usually red or black)



Bullish Candles :-

BULLISH CANDLES



**Most
bullish**



**2nd Most
bullish**



**Normal
bullish**



**Neutral
bullish**



**Least
bullish**

Bearish Candles:-

Candle Basics - Bearish Candles



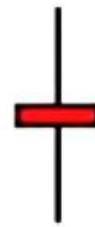
**Most
Bearish**



**2nd Most
Bearish**



**Normal
Bearish**

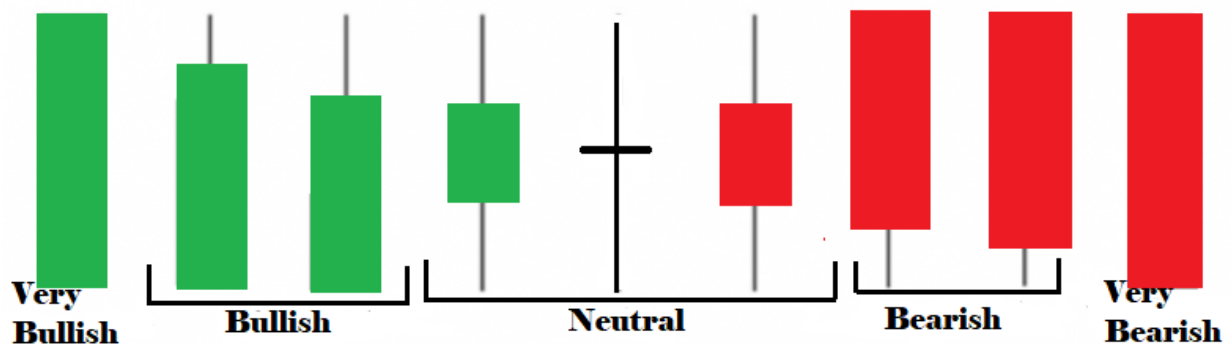


**Neutral
Bearish**

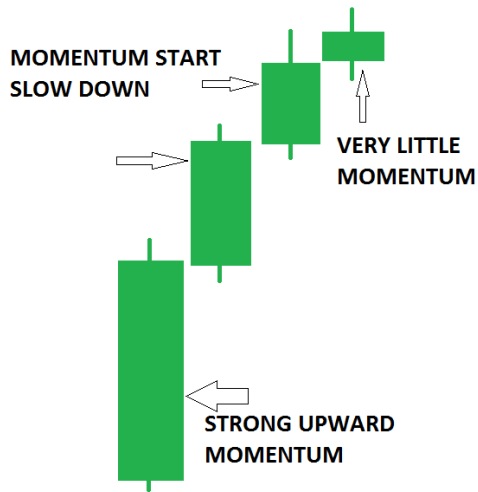


**Least
Bearish**

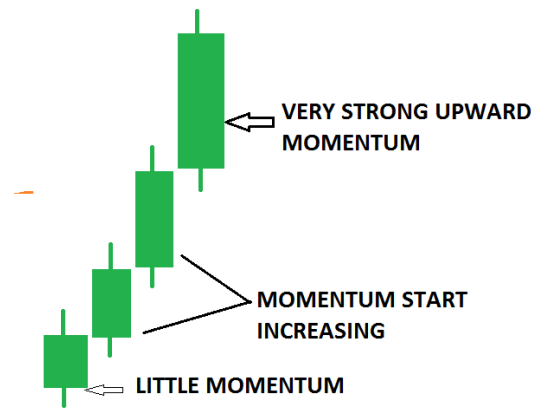
Bullish and Bearish and Neutral:-



ACCELERATION VS DECELERATION



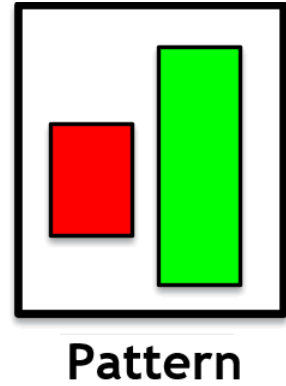
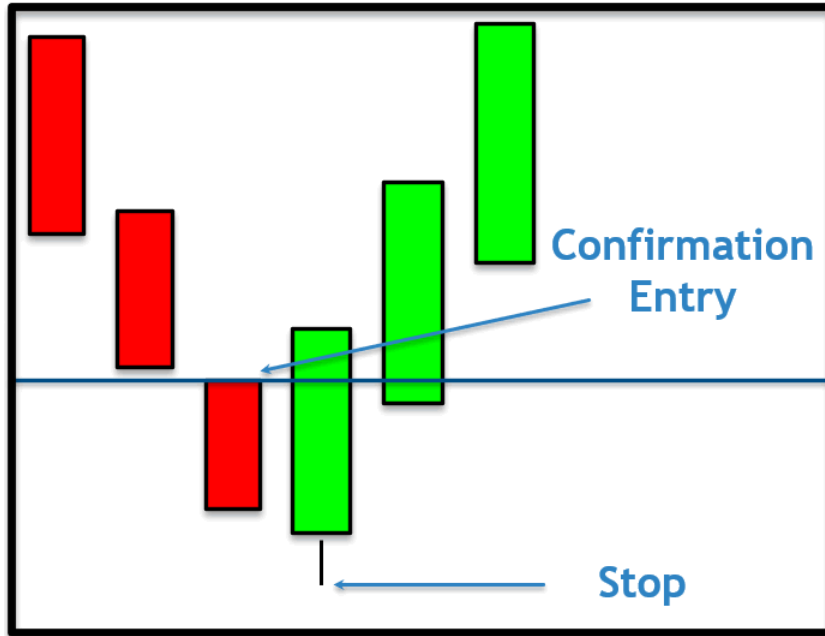
momentum decelerating



Momentum accelerating

Bullish Engulfing

This signal is a strong reversal signal when it appears at the bottom of a price movement.

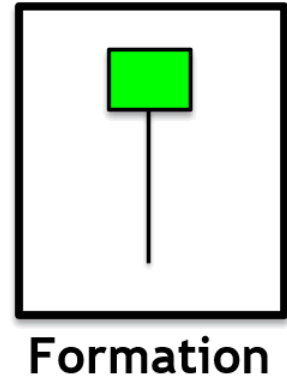
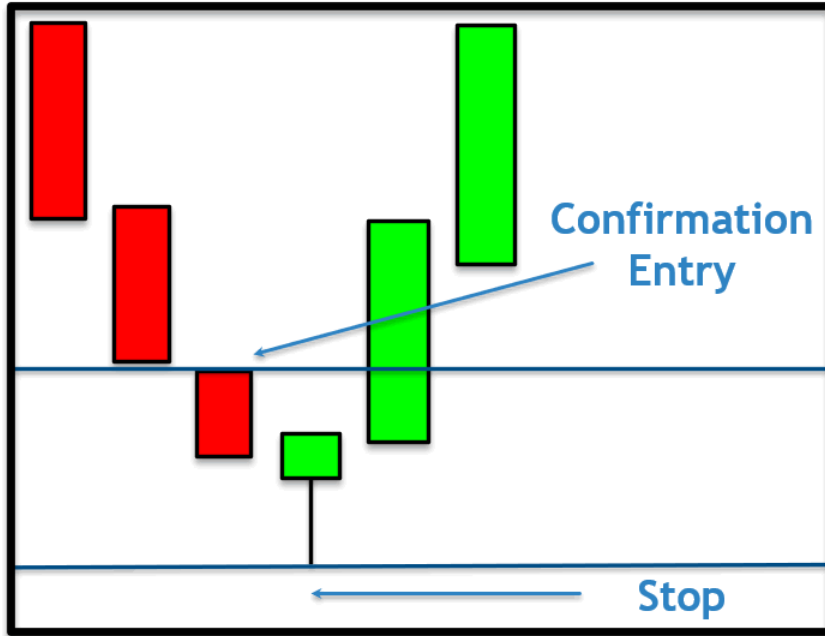


Identifying the pattern on a chart:



Bullish Hammer

Hammers occur in a downtrend and are considered bullish signals.



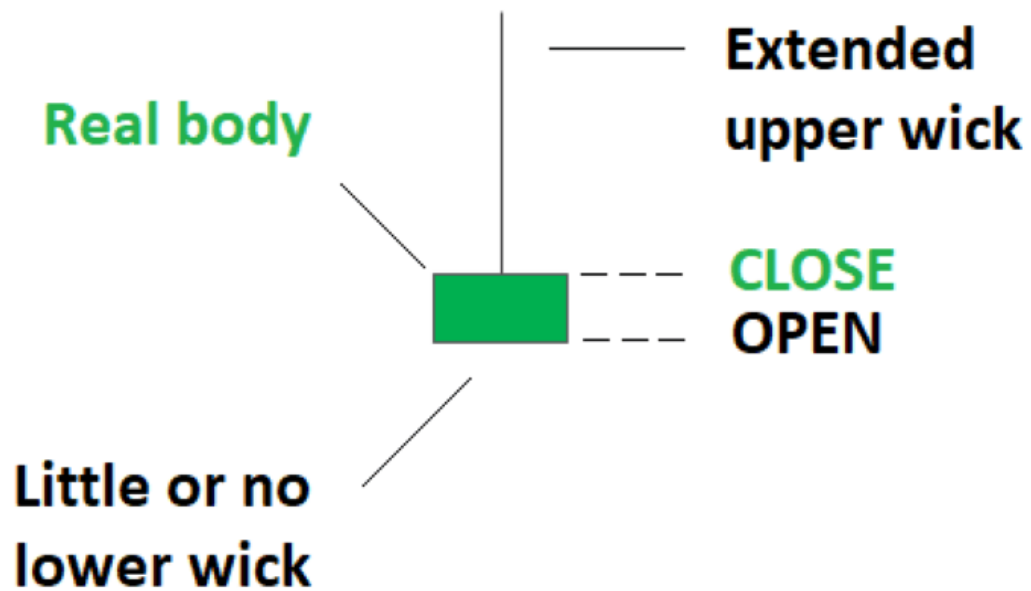
Identifying the pattern on a chart:



Inverted Hammer

This signal is a strong reversal signal when it appears at the bottom of a price movement. The hammer candle color is irrelevant

Inverted Hammer Candle



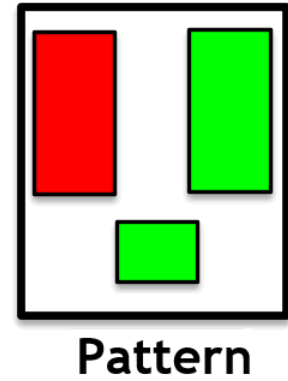
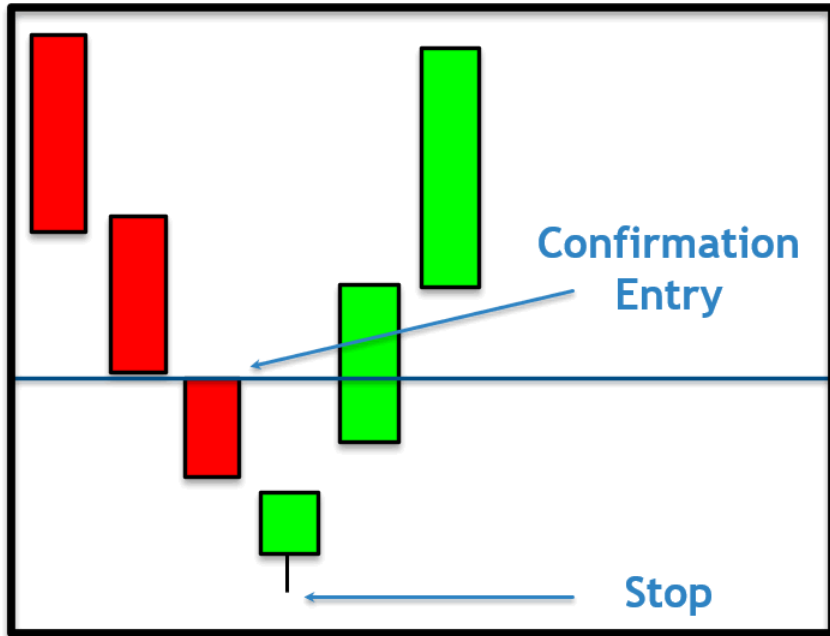
Identifying the pattern on a chart:-

deepak_m66ye8 published on TradingView.com, Aug 04, 2023 15:29 UTC+5:30



Morning Star

The morning star pattern is a signal of a potential bottom in the market.



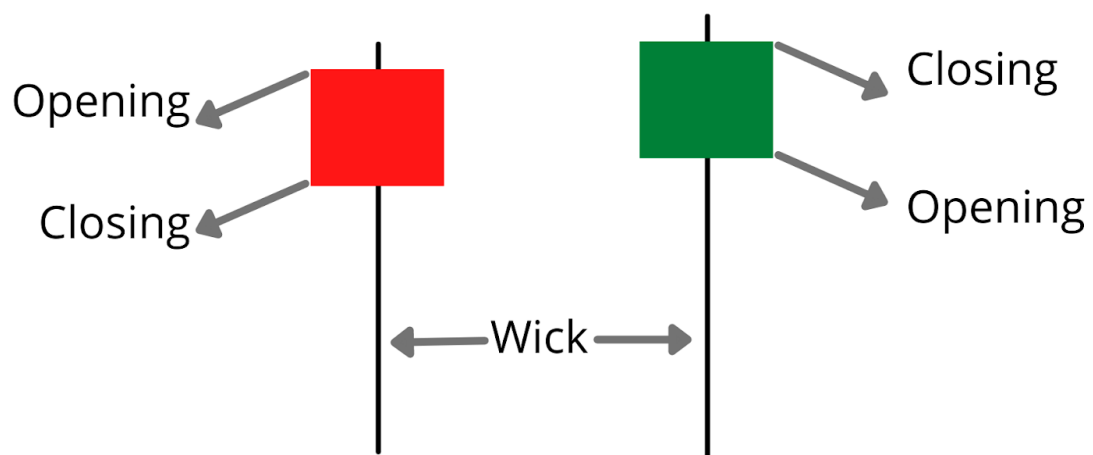
Identifying the pattern on a Chart:-



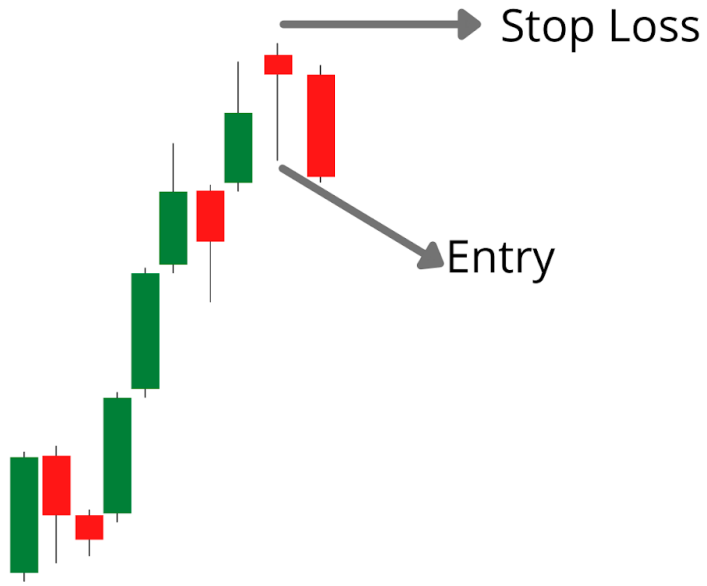
Bearish candlestick Patterns:-

HANGING MAN:-

Hanging Man Pattern

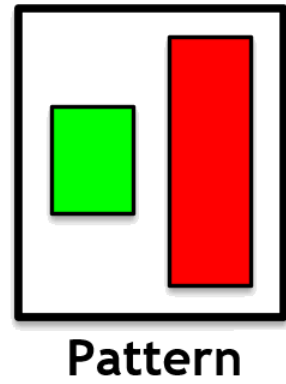
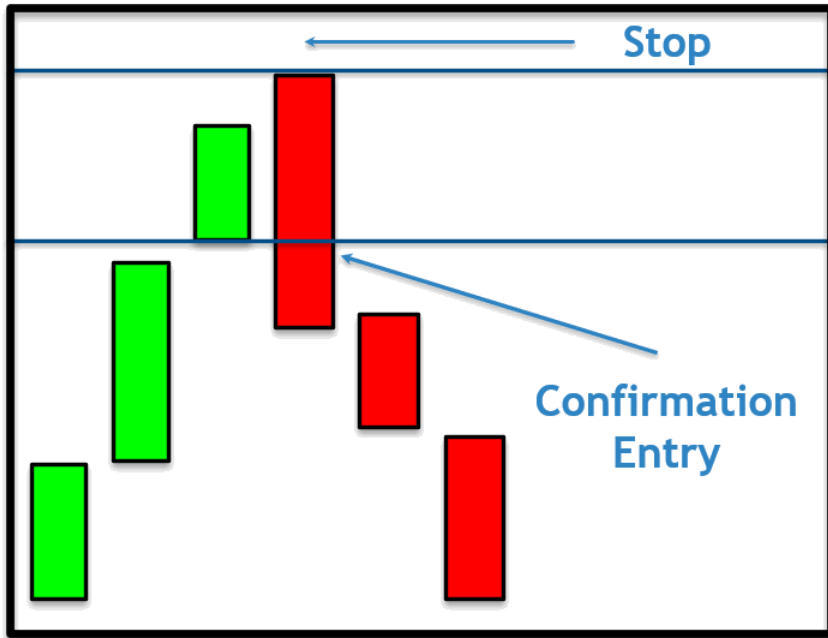


Identifying the pattern on a chart:-



Bearish Engulfing

This signal is a strong reversal signal when it appears at the top of a price movement.

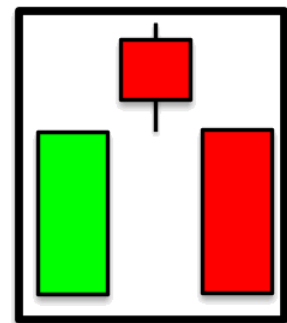
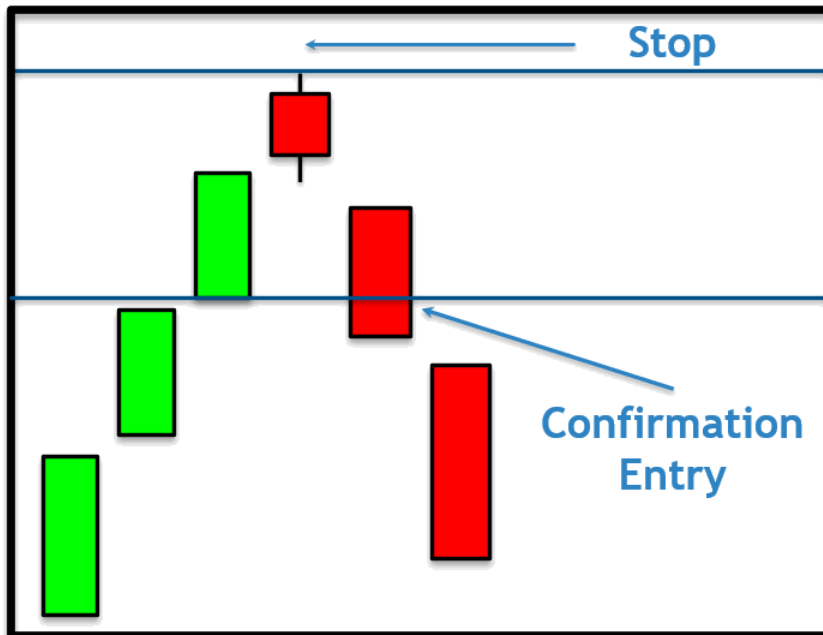


Identifying the pattern on a chart:



Bearish Evening Star

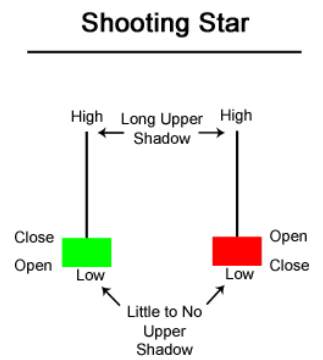
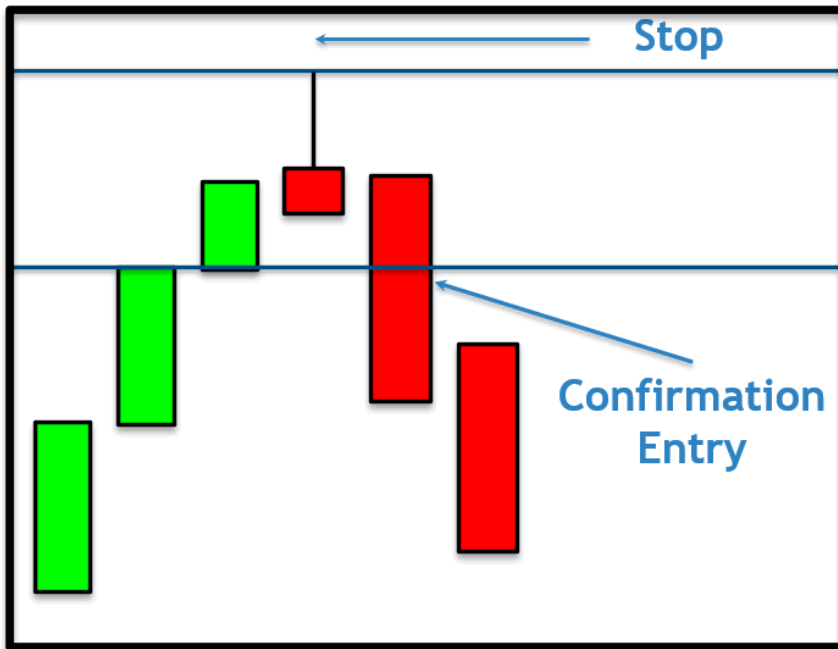
The evening star pattern is a signal of a potential top in the market.



Pattern

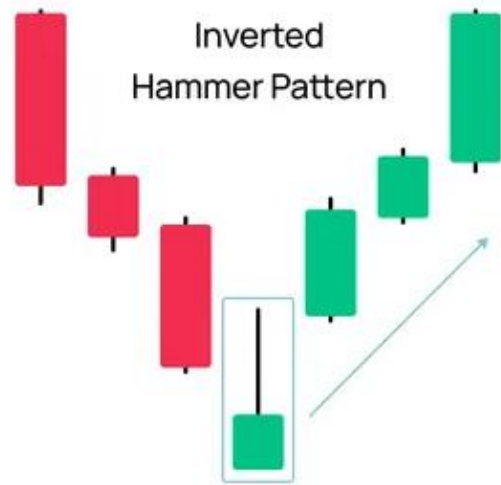
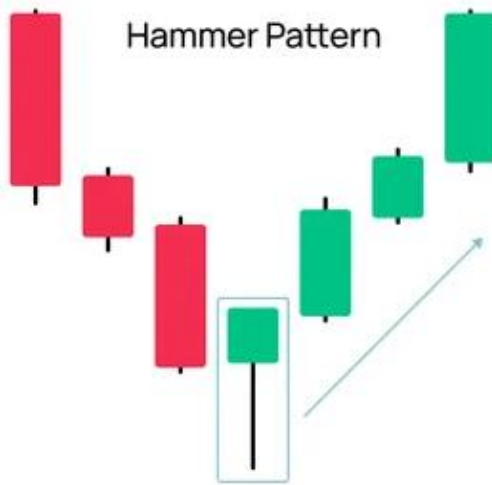
Shooting Star

The shooting star is a bearish signal that occurs at short-term tops in the market.

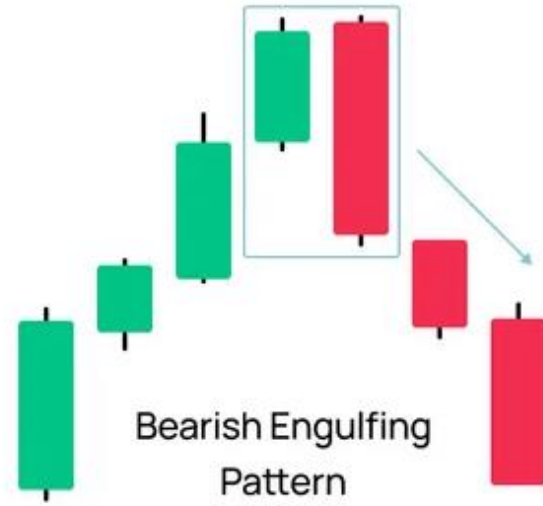
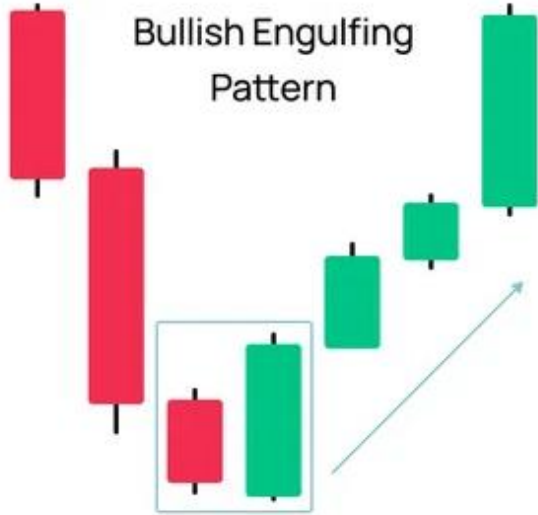


Quick Revision :-

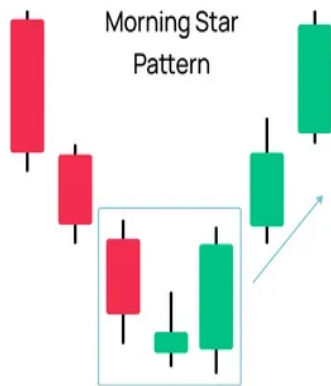
Hammer and Inverted Hammer



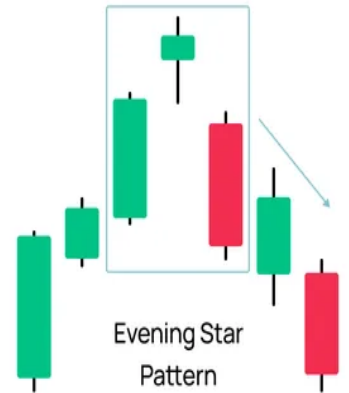
Engulfing



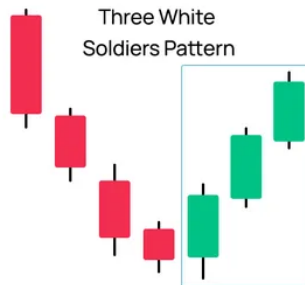
The Morning Star



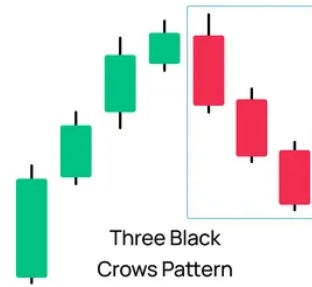
The Evening Star



Three White Soldiers



Three Black Crows



Marubozu

