



Malverne Crew Takes Shore Leave

Shore Leave 24 was an exciting time, and a much needed break, for the Malverne crew!

Our own CO, Admiral Tony Rowley, was awarded Region 7 Member of the Year, as well as receiving a commendation for service above and beyond to the region. Go, Tony!



Other Awards

Scholastic Award - Jessica Coyle, Highlander

Officer of the Year - JC Cohen, Accord

Ship of the Year - USS Triton, Sector 2

Helping Hands - Shirley Weaver, Alpha Centauri

Enlisted Member of the Year - Edward DeRuggiero, Highlander

Junior Member of the Year - Steven Weaver, Alpha Centauri

Commendations also went to Martin Lessem, Beryl Washington and Trisha Tunis.

R7 Announcements at SL

We're getting a new handbook for the region. It will have all regional procedures, and a list of regional staff members, their job description, and contact information. At this time, there is a handbook committee working on revisions and modifications.

Fleet 7 is catching up with the rest of the world. Soon it will be available online free, as opposed to having to subscribe for a hard copy.

All in all, the crew had a great time and we're already planning for Shore Leave 25! 

Inside this issue:

View From Vulture's Row / Brig	3
Engine Room	4
Doctor's Orders / Operations	5
Science Lab	6
Ship Services	7
Guest Contributors	8
Shore Leave 24 – Visual Logs	9

Special points of interest:

- *New Crew On Board*
- *New Cadet Arriving This Autumn*
- *Star Trek Meetup Report*
- *Away Mission to South Carolina*
- *Crew ID Cards Available*
- *Crew Birthdays*
- *Upcoming Events*
- *"Signs" - Movie Review*

Command Staff

Commanding Officer – Admiral Tony Rowley

Acting Executive Officer – Captain Paul Green

Operations Officer – Commodore Kimberly Brooks

Engineering Officer – Commander Matt Brooks

Science Officer – Lieutenant Morgan Kirby

Medical Officer – Captain Brian Griffin

Security Officer – Lt. Commander Greg McDermott

Flight Deck Officer – Commander Joe Kelly



Disclaimer



The Photorp is the official newsletter of the USS Malverne and is published bi-monthly. The USS Malverne is a chapter in Region 7 of Starfleet International. All articles are the property of the USS Malverne, how-ever, they are the opinions of their authors & do not necessarily reflect those of the staff of *The Photorp* or the USS Malverne. Permission is granted to copy any part of this newsletter, as long as proper credit is given to the author(s) and *The Photorp*.

The Photorp Bee logo designed by Dave James.

Star Trek and Starfleet are trademarks of Paramount Pictures, all rights reserved.



Hailing Frequencies



Editor – Kimberly Brooks
Asst. Editors – Matt Brooks & Morgan Kirby

The deadline for submissions for the next issue of *The Photorp* is: September 25, 2002

Submit all materials to: uss_malverne@yahoo.com

Subscriptions to *The Photorp* are free to members of the USS Malverne. We do participate in a newsletter exchange program with other groups. If you would like to exchange newsletters with us, please contact the editor at the above address.



The View from Vulture's Row

There are only two types of aircraft -- fighters and targets. - Doyle 'Wahoo' Nicholson, USMC

It's time once again for all the thrills and chills any reader can handle... in other words, I've actually written a column this month :)

I suppose I'll start with mentioning a recent staffing changes:

Longtime Second Officer Captain Paul Greene is now serving as Acting Executive Officer. The word 'acting' will go away as soon as the necessary and appropriate paperwork goes through the FleetOps pipeline. Paul's been helping run and helping represent the Malverne for quite some time now and this change in title is well-deserved.

Commodore Kimberly Brooks is transitioning from CMO to Operations Officer [as opposed to Flight Ops, etc.]. Being as she's already doing the member database, has submitted some proposed revisions to the chapter by-laws and the ship's manual and has taken on various related duties, the change in title is appropriate.

Speaking of staffing, I'd like to welcome aboard a slew of recent transfers aboard the Mighty M: the Griffin family - Brian, Connie, Greg, Jennifer and Richard. They're the latest additions to our southern contingent, which seems to be growing by leaps and bounds.

Shore Leave has come and gone, and those of us who attended all made it back to our respective quarters in one piece. Cap'n Paul Greene's raktajino was just plain scary - it tasted good but the good taste hid one hell of a

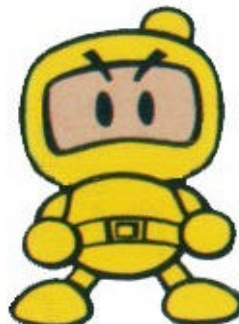
wallop, I kid you not... I was genuinely impressed at the almost complete absence of politics from Shore Leave this year. It was a welcome change and enhanced the weekend in a big way.

A number of events are coming up on the horizon. USS Richtofen's Gettysburg trip is coming up - see the CO if you're interested in attending.

There's a Slanted Fedora con the same weekend as the R7 Conference [23-25 August, that is]. For more info on the R7 Conference see region7.com; for more info on the Slanted Fedora con see sfedora.com. Drop the CO a line if you have any questions or comments re: upcoming events or have any suggestions as to events the Malverne should put on - let's hear from you!

That's all I have for now - see you next issue [if not sooner]!

Admiral Tony Rowley
Commanding Officer



The Brig

I have been busy with a project for the Malverne Security Team that deals with drill training while on the ship, as well as workout programs. Since my character is the Chief of Security and a martial arts expert and instructor, I was thinking of adding a Martial Arts class for the crew.

On a more personal note, I am engaged! My fiancée is Melissa Somers and I proposed to her on top of the Empire State Building, March 15, 2002. We are expecting our first child, due November 23, and we've already chosen Trinity Sariah as her name.

Lt. Commander Greg McDermott
Chief of Security





Engine Room

Things have been quiet here in Engineering, what with the Chief registering for college, trying to have a last bit of fun before hitting the books, etc. I recently came across this article that I wanted to share with you. I plan on wearing one of these one day. <G>



The spacesuit that will be used on the Martian surface will be one of the most complex pieces of hardware that will need to be

developed in order to enable effective human Mars exploration. A spacesuit should be viewed as a *wearable spacecraft*. Compared to spacesuits in use today, the Mars surface suit will need to operate for much longer periods of time, be easily and repeatedly cleaned and repaired, comfortable to wear for many hours at a time on difficult terrain, and be capable of supporting its wearer in a wide variety of conditions. The suit will also have to support information systems that will allow astronauts on Mars to communicate and handle data effectively.

It is important to note that current EVA suits in use on the International Space Station and Space Shuttle can only be used for a matter of tens of hours before requiring a complete overhaul. Apollo Lunar suits were ren-

dered almost useless by lunar dust after only a few excursions onto the lunar surface. Moreover, they were bulky and tiresome to use. While a few days of hardship inside a stiff suit can be adapted to, exploration activities over the course of several months on Mars would suffer greatly if a poorly designed suit were to be used repeatedly.

Current estimates of the target *felt weight* on Mars of a future Mars suit are in the 50-70 pound (~25-35 kg) range, i.e., the spacesuit's actual mass might be 130-185 pounds [-65-95 kg]. While this weight may seem high, these numbers should be compared to the mass of the current Space Shuttle/ISS EMU spacesuit system: over 300 pounds [150 kg]. Because of its use in zero g, Shuttle and ISS astronauts are still able to wear their suit relatively comfortably, but such a suit would be inadequate on Mars. Its felt weight would be 115 lbs, an impractical burden to bear, not to mention the fact that the EMU suit was not designed for walking to begin with.

As such, doing work on the design requirements for Mars surface suits now, even at moderate pace, may provide an important headstart. NASA JSC is currently leading an advanced spacesuit development effort that will help pave the way for a future Mars suit. Realizing the importance of advancing suit system development now as well, the aerospace company Hamilton-Sundstrand has also been devoting some internal R&D resources to develop a concept spacesuit for advanced planetary exploration.

For the full article, go to:
<http://www.spaceref.com/news/viewnews.html?id=458>

Star Trek Meetup - 23 July 02

PA Meetup – Tony Rowley

Looks like this is a really short piece, short because I was apparently the only fan to show up at the venue at the appointed time. The venue in question was the Roosevelt Pub in Center City, Philadelphia, not exactly the sort of place I'd pick for a Star Trek-related gathering, but what the heck... [shrug]

I arrived at the Pub at quarter to seven and took up a vantage point out front. The area of the pub mentioned in the email was already occupied by a large quantity of office workers from a travel agency across the street, but I managed to do the best I could. I hung around, quaffed a pint of Yuengling and eventually left when it

became evident that nobody else was showing up. I still think that the Star Trek Meetup is a great idea; I think a better location would work - let's see if they have another one somewhere.

TN Meetup – Kim Brooks

We had a pretty good turnout, with crews there representing the Malverne, Dark Wolf, and Francis Marion, as well as two Independent groups. I'm hoping for a better showing next time, and some of the crew are leaving flyers with local bookstores, comic shops, movie theaters, etc.

I'm hoping next month's will be even better.



Doctor's Orders

Greetings from Sickbay!

I'm Captain Brian Griffin, the new CMO here on the Malverne. My family and I recently transferred our memberships, and I want to thank Tony and crew for letting us aboard.

I'm an EMT-IV Tech, working for a local lifesaving crew, and I also am employed by Exide Battery. Connie, my wife and Asst. CMO, is an EMT with Ober-Gatlinburg. I have three children, Richard, Jennifer and Greg. Richard and Jennifer attend Happy Valley High School, and Greg is enrolled at Central Middle School.

Though I've been a Trek fan all my life, it wasn't until '91 that I met with some other fans and we started the USS Nathan James. Eventually we joined SFI and achieved shuttle status, but disagreements between the CO and XO led to the disbanding of the shuttle.

For two years we kept our SFI memberships, but our status was "unassigned". We heard that a former chapter, the USS Aries, was trying to get recommissioned through SFI's Existing Fan Club Program. I became XO, and with persistence, hard work, and the help of a former Nathan James member, Kimi Brooks, we commissioned in September '99.



After nearly three years serving as XO, I decided it was time for a change. I know we're going to enjoy being part of the Malverne crew, and look forward to many good times ahead.

Captain Brian Griffin
Chief Medical Officer



Operations

Hello from Ops!

First off, I want to say how happy I am being the new Chief Operations Officer. It was a big surprise when Tony offered it to me, but once I got over my shock I gladly accepted!

I'd been working on several projects for some time now, one being some sort of ID cards for the crew. You can see an example on page 7 of this newsletter, and I think they turned out rather well. I have gotten quite a few compliments on mine.

Though we've got some beautifully rendered blueprints of the Malverne, done by FCPT Bernard Guignard, we've not had a nice drawing of the ship itself until now.



Commander Tomalak, whom I've admired for some time (and used his talents shamelessly), took it upon himself to make us the above drawing. I was so pleased when I saw it, and will be eternally grateful. A link to his website is in the Ship Services section.

Another project is updating the Malverne's by-laws and handbook, and creating a supplemental uniform guide. The handbook will include both fictional and real life

responsibilities for each department, which I think can only help us grow as a chapter. Watch for more on this in the next newsletter.

I want to thank Dave James, CO of the Shuttle Francis Marion, for his gift to us, the fabulous "Photorp Bee" logo pictured on the front cover. That is now the official newsletter logo. Dave also updated the Malverne's logo, pictured on page 2.

Last week I got most of my office to participate in a fundraiser lunch, with the proceeds going to Alzheimer's Research. I'm proud to say that we raised \$220 dollars, which isn't bad for an office of only fifty people.

The Malverne's Cafepress store has been updated, and there are several new products. I want one of those travel mugs!

Happy birthday to these Malverne Crew!

Paul Green – 7/8
Greg Griffin – 7/18
Jennifer Griffin – 7/19
Connie Griffin – 8/8



Commodore Kimberly Brooks



Science Lab

The Science Lab is still recovering from two road trips in as many weekends. First it was to Paramount's Carowinds in North Carolina, where we had a great time. I'm sad to say that the statue of the Enterprise 1701 has been removed from the park. Those meanies!

Then it was off to South Carolina to visit with crew of the Francis Marion, and get a little bit of IKV Resolute business done, too.

In between trips I've been catching up on what's going on over on Devon Island. The following article is comprised of excerpts from:

<http://www.spaceref.com/news/viewnews.html?id=455>



When humans made the transition from the nomadic life of the hunter-gather to become inhabitants of communities, they did so by means of cultivating plants and domesticating animals. Soon, agriculture was born. Armed with the ability to stay in one place - humans now had the time and luxury to accumu-

late things - with knowledge being the foremost. At some point "civilization" emerged as a result.

As human communities spread out across our planet, these two learned behaviors have become ever more pliant, allowing previously uninhabitable regions to become habitable. Each new challenge spurred the development of new solutions. As time has progressed, the technology with which we provide for ourselves has advanced. Yet some things were just handed to us. Regardless of where humans have established communi-

ties, the basics of life support - air and water - have been provided by Earth's ecosystem. Humans learned to manipulate local portions of Earth's biosphere - but they did not have to create it *de novo*.

We now look forward to the prospect of leaving our world to visit others. As we do, we'll have to take a step that our ancestors did not face: we'll have to bring an artificial biosphere - a life support system - with us - one that we can sustain - and can sustain us in exchange.

Some proposed life support systems rely heavily upon biological components, others depend mostly on physical and chemical processes. Most use both.

In July 2002 SpaceRef Interactive installed a greenhouse (the Arthur Clarke Mars Greenhouse) on Devon Island as a contribution to the NASA-SETI Institute Haughton Mars Project (HMP). The greenhouse is dedicated to noted author Sir Arthur C. Clarke. The ACMG is intended to further the biological science and life support technology required to eventually support humans on Mars.

There's several related links, so I'd advise you to check them out.

Lieutenant Morgan Kirby
Chief Science Officer



Away Mission to South Carolina by Morgan Kirby

Recently two of the Tennessee Branch of the Malverne traveled across two state lines to visit some of the Shuttle Francis Marion's crew. Shopping was high on the agenda, so first stop was Spartanburg where we invaded the mall and a Barnes & Noble. We don't have one of those in our neck of the woods. Mom had to drag me from there, I was hanging on the door handle! <G> I did get two anime books I've been wanting.

Next stop was Greenville, which was even nicer. I found some clothes for school, the cutest Tommy backpack and handbag, and shoes. Love of shoes is a genetic trait in our family. We finished the day by having dinner at O'Charley's, where we gave Dakota and Tiffany presents. They are FM Cadets, though Dakota is the Asst. CMO. She's a big help to my grandmother, the CMO. We had a great time and plan to go back



Dave James, Dakota Cook, Julie James,
Kimi Brooks, Tiffany James, & Morgan Kirby



Ship Services

ID cards are now available to the crew, free of charge. The cards are based on the example shown in Starfleet Dynamics, which is what the CO wanted. And what he wants, he gets. <G> Since the Malverne's timeline is during the TOS Movie-Era, we're trying to be as authentic as possible.

The cards are laminated, and placed in a black PVC holder that can be attached to a clip or lanyard. Anyone that wants a card needs to contact the Ops Chief at uss_malverne@yahoo.com. You'll need to send a photo of yourself in uniform. If you don't have one, a front facing one will do, and a through the magic of PhotoShop one will be provided for you.



Order yours today!

Malverne On the Web

USS Malverne Cafepress Store: www.cafepress.com/ussmalverne

cafepress

Crew Fave Trek Sites:

Spike's Star Trek Site

<http://home.arcor.de/spike730/>



Baen Free Libaray
www.baen.com



Commander Tomalak's Trek Animations

<http://members.tripod.com/CmdrTomalak/>



Conventions & Events

Slanted Fedora Washington DC Con

August 16 – 18th
www.sfedora.com

R7 Conference '02 – Ft. Lee, NJ

August 23-25th
www.region7.com/r7conf/index.html

Camping Trip – Gettysburg, PA

August 16-18th
www.ussredbaron.org/camping.htm

USS Justice Operations' 6th Annual Picnic

August 24th
For info: justiceoc@aol.com

Slanted Fedora Philadelphia Con

August 23 – 25th
www.sfedora.com

Camping Trip – Kingsport, TN

August 30 – September 2nd
For info contact:
uss_malverne@yahoo.com



How Did I Get Here?

by Guy Blandford, Shuttle Francis Marion

Though I am the Chief of the Francis Marion, an Excel-sior class warship in Region 1, I actually live in England. It is an interesting role to be Chief of Operations and Second Officer, and I love this position.

The chapter is a Corey Chapter, so we mostly do stuff over email or go online to chat. I can say most of the business can be done this way. As not many of you know, Kimi introduced me to Dave James. This all started when after been in Starfleet for a year and I did not really do much than read the Communique when it arrived and read the news group. I decided to post a message, and Kimi replied and said the chapter she was in would be delighted to have me, so that was how I joined the USS Normandy.

When Kimi signed me up she introduced me to Dave James, who was the Intelligence Officer of the ship. So I joined this section and got on well with him. After awhile he asked me if I would like to join himself and his wife in a new chapter he would like to form, the Francis Marion. Dave asked me what department I would like to be in and I said Operations. Well after some time I was given a chance to apply to be the second officer of

the ship, which was a very big honour for me and I believed I had the qualifications for this. Dave agreed and gave me the position after discussing it with the XO.

After taking this role, I took the Officer Command College course, which I passed and Dave promoted me. We have now more than 14 people and before our commissioning, which is at the end of October this year, we hope to have 20 members. For this special event I am going to the commissioning, which will be held in Greenville, SC. I have my plane ticket booked and I am really looking forward to it! I know Kimi and friends will be coming, so I will be looking forward to meet her and the rest of my chapter which live all over.

Lieutenant Guy Blandford
Second Officer
Chief of Operations
Orientation Officer
Shuttle Francis Marion



USS Inkosi – Sister Ship in South Africa

Greetings gallant crew of the U.S.S. Malverne!

For the past ten years, Johannesburg has had the honour of hosting South Africa's biggest (and only) Sci-Fi Convention, ICON. This year was no exception, with a bigger venue and almost twice as many feet through the door as last year; the ICON tradition is set to continue for another ten years.

Instead of being mere attendees this year, we decided to take an active role in the event and use it to host the *Star Trek CCG National Championships 2002*. The event saw three of the four South African STCCG player groups, (our own league included) clashing in an explosive contest of wits and skill to determine who is the best STCCG player in the sub-continent.

This was the first time a Star Trek CCG tournament was held in Johannesburg, and the first time the STCCGSA team had faced either the Starfleet league or the East Rand Gamers.

Although none of the Starfleet players walked away with the top spots, a great time was had by all. Besides, now we know how they play, and we'll get them next time ;)

After five rounds:

In first place was STCCGSA's Fritz Meissner II with 8 (+397)

Second came STCCGSA's Richard Slater with 8(+240)

And third was the East Rand Gamers' Stephen Redford with 5(+197)

We owe the success of the event to all the members and friends who stopped by to give us support, and helped us during the weekend. Especially to the STCCGSA team who traveled all the way from Cape Town to give us their expertise and share their experience in tournament direction with us.

Qapla'

Captain Owen Swart
Commanding Officer
U.S.S. Inkosi
NCC-75010
Starfleet: African Flotilla

www.geocities.com/regentrex



Shore Leave 24 - Visual Logs



CO Tony Rowley & Ops Chief Kim Brooks
at 10-Forward



USS Maat's Joan Piece looking exceedingly
mischievous, as does Tony



Tony planning his strategy at the infamous
Tribble Toss



Paul Green, Malverne's Tactical Officer,
retaliates



Xenodiplomatic Alliance Meeting
Kyle Wolf - Starfleet Diplomatic Corps
Christina Runewicz - Maquis Forces International
Verelan t'Lhaitrha - Romulan Star Empire



Commodore Beryl Washington
CO of the USS Sovereign



USS MALVERNE

PO Box 272
Upper Darby, PA 19082-0272

"In Harm's Way"

KIMBERLY BROOKS
420 MONTE VISTA DRIVE
KINGSPORT TN 37660

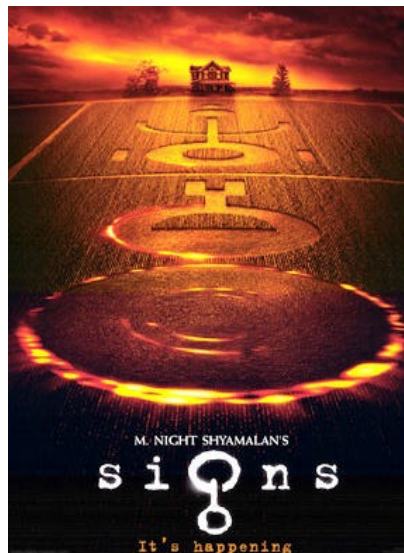
Visit us on the Web!
www.ussmalverne.org

SIGNS – Movie Review by Kimberly Brooks

Science fiction and spirituality mix into a satisfyingly heady brew. This latest thriller from writer-director-producer M. Night Shyamalan is both genuinely suspenseful and emotionally engaging.

It might be too scary for some preteens, Signs shows tall, shadowy aliens, children in jeopardy and flashbacks to a fatal car accident.

Set in Bucks County, Pennsylvania it focuses on the mysterious appearance of crop circles carved into a family farm.



Mel Gibson is Graham Hess, the family patriarch and town reverend, whose faith is tested in the journey to find the truth behind the circles. Joaquin Phoenix is Merrill Hess, brother to Graham and a former minor league baseball star.

At first, the brothers suspect a prank but learn that similar circles are appearing the world over. As mysterious occurrences increase, the farmer finds it hard to comfort his two young children. There are underlying themes of bereavement and loss, but moments of humor. I enjoyed this movie very much and will see it again. Any flick that can make me laugh, cry, and feel good about myself and the future of this crazy world deserves a 10 in my book.

Go see it!