



Quick Continuous Bias

For bias binding, you can cut individual strips at a 45-degree angle to the Selvedge and sew them together or use this quick-and-easy technique to make continuous bias using rotary cutter.

1. Begin by cutting a large fabric square. A 30" square will make enough 2 ¼"-wide bias to bind most large quilts. Place straight pins pointed *in* at the top and bottom of square. Point pins *out* at side edges. Cut the square of fabric in half diagonally. (Fig. A)

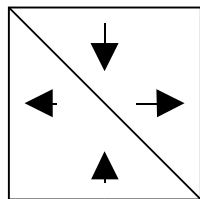


Fig. A

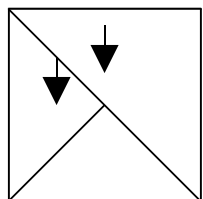
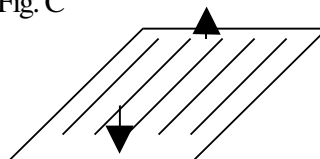


Fig. B

2. Place triangles right sides together, matching edges with pins pointed *in*. Sew lengthwise straight edges, of the two pieces together to form a large parallelogram. Press seam open. (Fig. B)

3. Starting and stopping ½" from straight ends of fabric, rotary cut a binding-width strip parallel to the bias edge (Fig. C) (*longest sides of the parallelogram*).

Fig. C



4. Cut the entire parallelogram into binding-width strips parallel to first strip. (*Be sure to stop ½" short of the ends as you cut!*) Cut off the last strip if it isn't the correct binding width.

5. Form a tube by pinning remaining straight-gram ends together (*sides with pins pointing out*), (Fig. D) offsetting cuts. Match point of parallelogram to first cut on the other straight edge (arrow a to arrow b). Continue to pin-match cuts along edges. (*Edges of parallelogram will not line up but should extend at ends.*) Sew seam.

6. Cut strips apart at seam to create continuous bias strip.

Fig. D

