

# How I make deciduous trees

Most articles about making deciduous trees involve the purchase of "rubberized horse hair", which is very hard to get a hold of, or lichen plopped onto a twig, or Steel wool stuck on a twig and covered in hair spray and flocking, and they all produce OK or even great looking trees, but they are either really expensive or fragile.

My trees were inspired by an article for making hedges with scouring pads and thought why not make a tree similar way. So I went out and picked up some scouring pads (the thin ones I saw used in the hedge article) and made a tree and it looked like feces, so I binned it, later I saw some of the thicker pads and was re-inspired. I started with green but they looked really, really green so I toned them down with some black spray paint, but it required a lot of spraying, so now I start with black and lighten with dry-brushing.

## Stuff required:

20-24 Gauge paper/cloth wrapper floral wire

1" thick scouring pads (black preferred)

1.5" metal washer (for base)

Hot glue gun with glue sticks

Various shades of green and brown paint

Spackle

Flocking or sand

White glue

Paint brush

Wire cutter

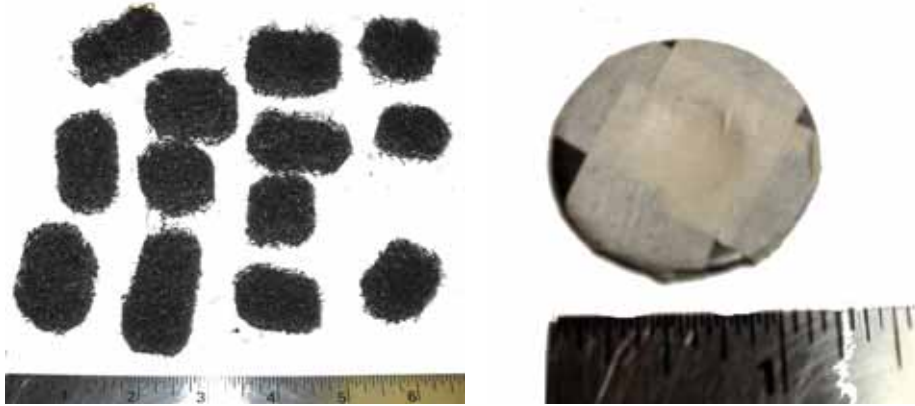
Masking tape

Scissors

Cut the Scouring pads into small circular and or oblong bits about 1-2" long (use the scissors. The scouring pads will dull them quickly so don't use a pair you care about) keep the smaller bits they will also be useful. If you can't find black scouring pads you will have to paint them to get them black, I recommend spray paint.

Cover the washer in masking tape.

Cut floral wire in to 4" & 5" sections (with the wire cutters).



#### Form tree armature:

Take 6 Pieces of cut floral wire and masking tape them into a bundle leaving  $\frac{1}{2}$  to  $\frac{3}{4}$  " clear at one end and 2"-3" on the other end clear, bend the short end of the bundle out, to form feet. Next bend half of the wire out where the tape ends on the longer end, and then bend the remaining wire about an inch above that bend (first picture). Bend the long straight branches into U and or 7 shapes (second picture).



Affix tree armature to the masking tape covered washer with hot Glue (last picture)

#### Texture tree armature:

Cover the roots of the tree armature in spackle, let dry.

Mix white glue and water in 50/50 mix.

Cover the spackle with the white glue/water mix and cover with sand let dry, apply second coat white glue water let it dry Paint it brown, dry-brush green.

Paint Glue water mix on to the masking tape that covers the trunk of the tree (this also serves to keep the masking tap on as over time it will lose its adhesiveness) then sprinkle sand over the white glue/water mix when it dries tap off the excess sand and cover it again in the white glue/water mix, when it is dry the second time, paint it a Dark brown and dry-brush a lighter brown.

### Add Foliage:

Take the larger bits of scouring pads and hot glue them to the branches (use a lot of hot glue) and each other, until you cover all the branches, use the small bits to add variety, be careful to not make the tree to top heavy. When you get a look you are happy with, let the glue harden. Pick off some of the strings of glue and trim the pads a bit with scissors to give a more natural look.



Get your paints ready, dry-brush a light brown and various shades of green.

