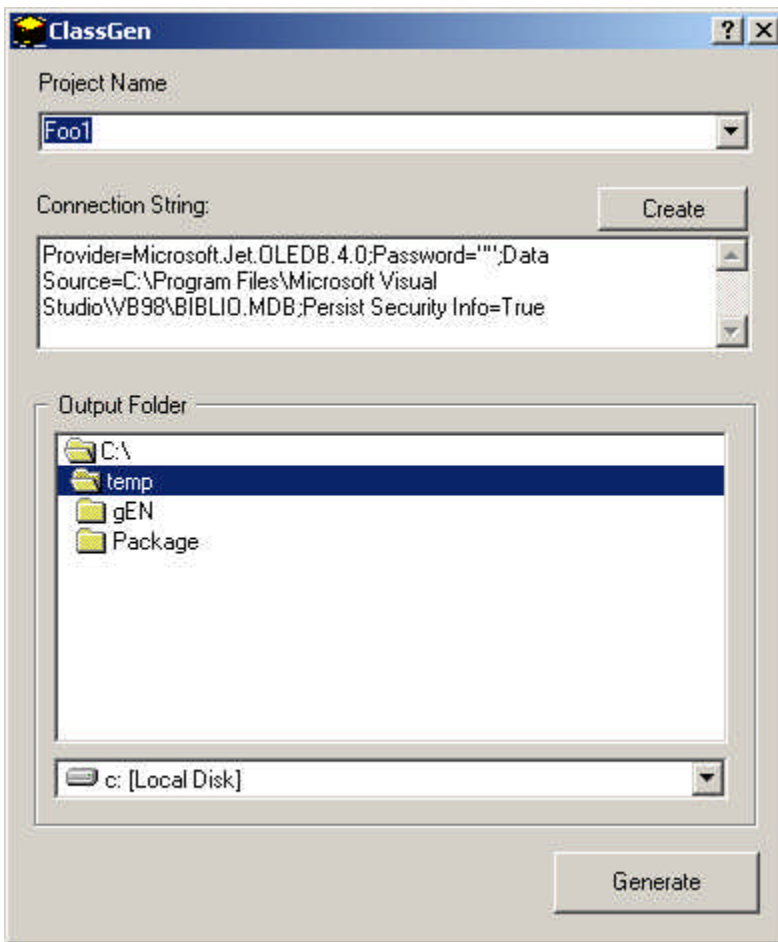


ClassGen

Introduction:

ClassGen is a tool designed to encourage an object-oriented way of programming traditional databases. An object is created for each table in the selected database and collection is created.

Usage:



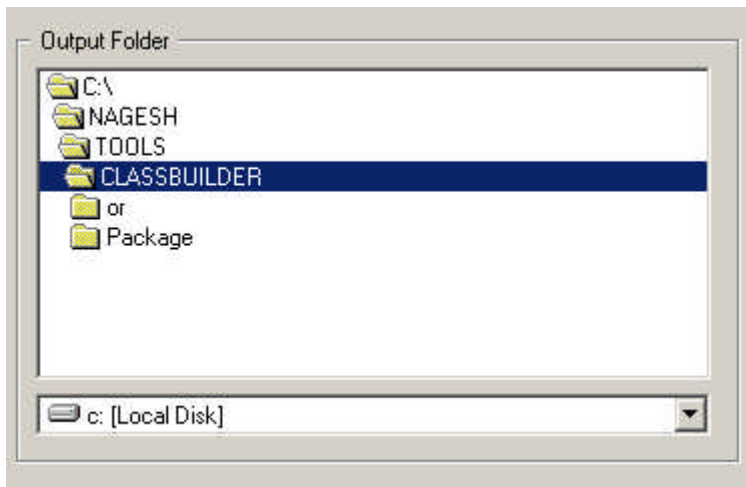
This is the only application screen. You may type in a new project name that you want to create or select from a list of projects.



Select or type in the project name



You may type in a connection string or click the create button to create a new connection string.



Select the folder to where the project and associated files must be stored.



Click the generate button to create the files.

After generating the project make sure you add reference to “Ole Automation” and “Microsoft ActiveX Data Objects 2.7”

Note: the code generated has been tested on ADO2.7 only. It may function on other versions of ADO. The generated application will not work with ADO.Net

If you do not have ADO 2.7 it may be downloaded from Microsoft.

(<http://msdn.microsoft.com/library/default.asp?url=/downloads/list/dataaccess.asp>)

Known Issues:

1. In Oracle if there is more then one schema in the database all tables from all schemas will be imported. This may result in duplicate class declarations.
2. In some cases when save password is selected with has caused connection failures.

Common errors:

Error Message	Cause
Generation could not complete.<File name>is not a valid path. Make sure that the path name is spelled correctly and that you are connected to the server on which the file resides.	Connection string in the connection string textbox is invalid. Verify it is a valid connection string.
Generation could not complete. Object or provider is not capable of performing requested operation.	The Ole DB Provider selected in the connection string is not a Database provider and does not have a table schema structure.
Generation could not complete. Invalid authorization specification	The connection string is not complete. Or may be invalid.
Generation could not complete. This OLEDB provider requires a PROVIDERSTRING or DATASOURCE Initialization property to be set.	The Ole DB Provider selected in the connection string is not a Database provider and does not have a table schema structure.

Info:

Send Bug reports, feature requests to
nagesh@yahoo.com