

# General Questions

a) Write the dynamics: *f* *mp* *pp* *ff* *mf* *p*  
in the correct order from the quietest to the loudest:

\_\_\_\_\_

b) Add the required signs in this bar:



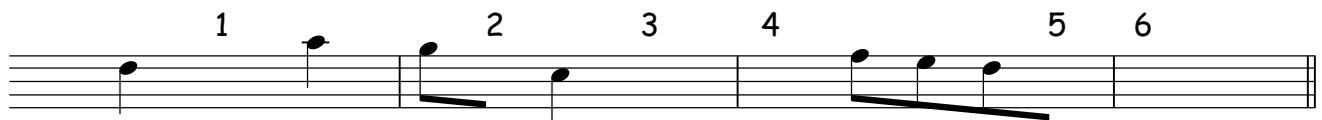
- Add a sign which will tell the performer to play just the first note louder, with extra force.
- Add a sign over the quavers (8th notes) so they will be played smoothly.
- Add a sign over the E crotchet (quarter note) so that it will be played short and detached.
- Add a sign over the final note so that it will be held on longer than its normal value.

c) A composer decides to write a piece of music which should be played 'at a moderate walking speed'. Underline one of the following Italian words which suggests this speed:

allegro      lento      andante

d) Complete the piece of music below by following these instructions:

- Draw a bass clef at the start
- Write the key signature of F major
- Write a time signature which means 'three crotchet beats to each bar'



e) At each of the numbered spaces add the notes and rest named below:

- A, crotchet (quarter note)
- G, quaver (8th note)
- crotchet (quarter note) rest
- C, crotchet (quarter note)
- E, quaver (8th note)
- F, dotted minim (dotted half note)

Which bar uses only the notes of the tonic triad? \_\_\_\_\_