



RAVELINGS

June 2009 Publication of the Missouri State Quilters Guild Volume XXII #5 Ellen O Bryan, Editor

2009 “Missouri Waltz” Fall Retreat Features Billie Lauder September 25, 26, 27, 2009

Inn of the Grand Glaize, Osage Beach Missouri

Come join us for a weekend of friendship, frivolity, food, fun, and quilting (I couldn't think of a quilting word that begins with 'f'). Learn a new technique or brush up on an old one. In addition to Billie Lauder, there will be ten other teachers offering a variety of classes that will be sure to please everyone. We have some new teachers and techniques this year, so you don't want to miss it. And if you don't want to take a class, just come for the camaraderie, cuisine, crafts, chatter, celebration, and a captivating speaker. (And of course shopping at the outlet mall!) Friday night will be a very eventful evening, as well, with demos and a short surprise presentation. For Saturday night, be sure to wear your best hat, fur, and ball dress, because we are having a “Missouri Waltz Ball”. It will be a night of glitter. (I'm sure that some of you, or an aunt, or relative, have some old hats or furs stocked away. I plan to get out my aunt's fur stole and hat that I have never had a chance to wear! I don't get many chances to really dress up!)

Billie Lauder's keynote lecture with us it tends to change from time to time because and her books. Billie is always adding her audience jazzed and this is a quilt trunk large suitcases full of quilts and lots of has a great time!!!! You will definitely go create one of her quilts from her many tricks.



Saturday evening is one of her favorites and it compliments her collection of her quilts something new to library. Billie likes to get show that can do it. She travels with two surprises. Add in some humor and everyone home wanting to play with your fabrics, and

With the cost of everything going up our MSQG board has approved underwriting and subsidizing some of the costs of this retreat with MSQG savings. That way we did not have to raise the price for the weekend, so that more members can attend. You will see on the registration forms that you can have up to four people per room, which will also save you money. Be sure to fill out your registration early. Classes have limits to the number of students so the earlier you sign up, the better your chance of getting your requested class. Forms can be mailed **or after July 1** to account for differences in delivery dates of the newsletter. Bring sewing supplies, comfortable shoes (or slippers), and your quilting friends. It should be a weekend to remember.

There will be four vendors again this year (two new ones) with lots of shopping opportunities and fun activities planned. Guilds can bring their opportunity quilts to show and sell tickets. Please contact me to make sure there is room (you need to bring your own quilt stand and monitor the ticket sales while it is up). There will also be friendship blocks, charity “We care about you bags”, Missouri Waltz challenge quilt, show and tell, fat-quarter raffle and lots more. There will also be an open sewing room if you just want to bring your own projects to work on. Hallye Bone will be here again to appraise quilts on Saturday and will give a special hour presentation for a small fee on the care and repair of quilts, based on her new book. Sign-ups for this presentation is on the registration form. Hallye says to bring quilts that you have questions about and she will try to get to them in the class. This class is not for appraisals. You will need to make a separate appointment with Hallye at 314-872-9353 ahead of time if you want a quilt appraised. If she has space, she will take appointments at the retreat.

I look forward to seeing each and every one of you dancing the Missouri Waltz!

...Toby Lischko, 2009 Retreat Chairman

MISSOURI WALTZ HAPPENINGS

About Billie Lauder:

Billie Lauder needs little introduction. Billie has a knack for making quilting easy for all levels of quilters. She loves to develop "Quick Trick" methods of quilt construction. A traditional quiltmaker with a twist. She loves to get quilters jazzed and excited to try a new technique for construction or look at something old in a new way. She likes to see just how far she can "push" a block. All levels can accomplish her classes. She will be teaching two half-day classes: *Strip Piecing by Hand* and *Tea Time Table Runner*.

She was the first guest on Alex Anderson's "Simply Quilts" show and was the guest artist more than any other quilter. Her name is well known in the quilting world. Billie is proud to be a third generation quiltmaker. She has been teaching quilting since 1976. When asked what quilting meant to her, Billie said, "It is the past, the present and the future." The past is her learning from her grandmother and mother. The present is her current teaching of her students. And the future is the people who will pass on the knowledge of what they have learned from her to others.

Writing and designing books has been a great challenge for Billie. With 24 books published by Easymade Publications over the last several years, Billie has a vast library to draw upon for her workshops and lectures. The HGTV show "Simply Quilts" helped Billie launch her lecture tour, which continues to take her all over the world. You can see her information at www.easymade.com.

SHOW AND TELL

Please bring up to two special items for Show and Tell. Sign up downstairs after you register. Teachers, please plan to show your class project on Friday evening after dinner.

FRIDAY NIGHT SCRAPPY

Friday night after dinner, learn different ways from different instructors about how to use those scraps you have been saving!

09/10 charity challenge

Pat Smith, board member from Mount Sterling, continues her challenge issued at the Fall 2008 retreat of marking one treasure bag a month, per member, for the Missouri Division of Children. **Are you up to it?** Instructions are on our website www.msqq.org. Click on Newsletters and go to page 6 of the **2008** Fall Retreat Newsletter.

Quarter for a Quarter

This year at fall retreat the only Ways and Means project will be "Quarter for a Quarter". Donate a fat quarter and pay twenty-five cents per fat quarter. For each fat quarter donated, your name will be entered in a drawing to receive a quarter of all the fat quarters. Are we clear so far?

There will be no raffle baskets, and no bags or vests for sale (only luggage tags). Instead, MSQG's sole money raising event will be "Quarter for a Quarter". For every fat quarter put in the pot, one will pay a quarter (put in four fat quarters, pay a dollar); for every fat quarter, your name will be added to the drawing (put in four fat quarters and put your name in the pot four times). Fat quarters will then be split into four "pots" and four names drawn for the winners.

Challenge Quilts

The theme for this year's Challenge Quilts is based on our theme Missouri Waltz. Since the waltz is a **three**-step dance, the challenge project must have **three** elements, such as **three** colors, **three** blocks, **three** techniques, etc., plus contain a block with the name Missouri in it. (Hint: there are more than ten Missouri Blocks in the "*Book 5500 Quilt Blocks*.")

Keep Reading for More Missouri Waltz Happenings....

FREE SEWING ROOM

The free sew and UFO room will again be available From 9 a.m. to 3:30 p.m. on Saturday to work on your own projects. There will be tables, chairs and electricity. Bring extra lighting if you need it.

Hallye Bone Appraisals

Hallye Bone will be available for quilt appraisals. Please make your appointment in advance directly with Hallye by calling 314/872-9353. She will also offer a one hour workshop on the care and repair of your precious heirloom quilts after the classes on Saturday. Sign up is on the registration form.

SHOW and SELL

Teachers and members are invited to show and sell on Friday night after the program. We will have a Room for you set up where you can sell your products. To reserve a table, please call or email Toby Lischko at 314/913-1197 or tlischko@yahoo.com (I will even be having a special book signing for my new book *St. Louis Stars* at this event!) In addition to this, Sunday morning before breakfast, there will be an opportunity to get information about workshops and lectures from statewide teachers. Space is limited, so first come, first serve, for both events.



TIMELESS T'S and SWEATSHIRTS

Timeless T-shirts and sweatshirts are available on pre-order only. They are yellow with a three-color logo. There is no date printed on them so they can be worn for years. The form is on the back of the registration form (page 12)

.....Natalie Rullkoeter,
Ways & Means Chair

For Our Convenience – Quilt Shops Come to Us!

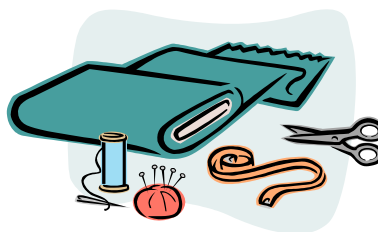
There will, again, be 4 special quilt shops that are coming to the retreat to provide us with special exclusive shopping opportunities. Be sure to check out the special opportunities to get that forgotten item, the can't live without fabric, pattern or gadget!

Thanks to –

Linda Foulk– *Specialty Quilts*– Jefferson City MO
Gail Marcy– *Satin Stitches*– Columbia MO
Carol Carney– *Cobblestone Cupboard*– Festus MO
Valerie Studor– *Patches Place*– LaMonte MO

friendship blocks

See page 10 for Terri Kanyuk's Friendship Block directions. These blocks will be raffled off – Winner Takes All! Make as many blocks as you like to increase your chance to win. The block is simple, add a special touch by adding your words of wisdom in the center of the light fabric. Use a pigma pen, or embroidery. Be Creative!



Fall Retreat Classes

Full Day Classes - there is an additional \$20 fee for full day classes which will be billed when you receive your written class confirmation after August 15. Machine required on all full day classes.

101 "INITIALLY YOURS" TOTE BAG - Nellie Mueller, Instructor

Class Description: Confident beginners with rotary skills and up. If you need a pattern and/or fusible fleece, they are available from the instructor: Pattern \$8.00. 1 ½ yd Pellon 987E \$7.00. Add \$1., if pattern is to be mailed. Please order before August 31, 2009 to Nellie Mueller, 1970 Woodhaven Ln., Pacific MO 63069-5554, 636-257-3716, sew197@yahoo.com. The roomy "Initially Yours" tote bag features a bold monogram and plenty of inside pockets (bottom measures 6" X 15") This bag would make a great gift for special friends and family members. In class you *will* learn purse-making skills, with plenty of tips and shortcuts- The use of coordinating fabrics and design options make this project a lot of fun. Machine with zigzag stitch is desirable, but not required. Please contact Nellie if you have questions.



102 "MAGICAL STACKED 4-PATCH" – Nancy Barnes, Instructor

Class Description: Beginner or Experienced Quilter
This will be the most fun you've had making a quilt! Choose a very large patterned fabric with colors and lots of background (maybe one you've loved to look at but didn't have any idea how to use). Stack the fabric, cut the rows, and cut the rows into squares, then the magic starts. Every cut is random, with no fussy cutting or 60 degree angles. You can arrange the identical squares in 4 ways and you have to choose the one you like best. Block after block, all are different and it is all from the same focus fabric!



#103 “Chenille Sweatshirt Jacket Class – Carol Carney, Instructor

Sweatshirt Jacket options for MSQG retreat 2009



Snow Family Jacket



Cat's Meow Jacket



Puppy Pockets Jacket



Pumpkin Jacket

Class Description: All Levels. There is a \$10 fee which includes pattern, freezer paper, and fusible material. You will choose your pattern after you receive your confirmation. These sweatshirts by Phyllis of Fabric Creations have pockets, chenille, and rough edge applique as well as ragged edges. You'll love these easy techniques to make many different sweatshirts for yourself or special friend. Designs I've selected for these classes are: Pumpkins, Dog's, Cat's, or Snowfamily. See them on our website at cobblestonecupboard.com. We also have available higher quality sweatshirts in many sizes & colors and fabric kits, as well as chenille marking rulers, and chaco pen style markers. Since we are a large quilt shop and are vending this retreat also, we will be sure to include any supplies required for this class in our vending room. Supplies purchased from us for Carol's class will also be discounted 15%, which is our policy at our shop also.

The class involves converting a conventional pull-over sweatshirt into a jacket, it's really quite simple, even the finishing techniques. You will also learn to convert the "chenilling" technique into appliques that are simple to attach. Precision detail work is not required for a great project, this one is easy. Since these patterns are designed for a pleasant

experience, time consuming accuracy is not required so any skill level will enjoy this experience, and you will have a traffic stopping outcome.

HALF DAY CLASSES – One half-day class is included in your registration fee. If you would like to take a second half-day class (and space permits), there will be an additional charge of \$20 which will be billed when you receive your written class confirmation after August 15.

MORNING CLASSES (half-day)

#201 “**STRIP PIECING BY HAND**” – Billie Lauder, Instructor

Class Description: All levels. **includes the book and my new hand** Billie has done for machine piecing she strip-piece by hand. You just need to her “Quick Trick” methods have been even designed her own special ruler for making samples of the different samples into a doll size quilt.



No machine required. **\$15 fee which tricks special ruler is required.** What now does for hand sewing. Yes, you can know where to start and stop. Many of converted to hand piecing. Billie has marking your fabrics. You will begin techniques, and then you will turn these

#202 “**FUSIBLE APPLIQUE – HEART WREATH**” – Barb Bolesta, Instructor



Class Description: All levels, No machine required.

So many of today's appliqué patterns are specially designed to be fused. If you haven't done much or any fusible appliqué, this is your chance. You will start with a heart wreath pattern, but will have additional leaf and flower templates to redesign it and add appliqués as you like. When the arrangement is to your liking, iron it to the background and you're done!

#203 "SILK FLOWER MYSTERY" – Beckee Hart, Instructor

Class Description: All levels, No machine required. \$20 fee includes background fabric, organza, silk flowers and thread. Fee may be less (but not more) depending on the background fabric.

Beckee will be teaching how to make this lovely wallhanging, using a fat quarter for background various silk flowers to form the 'tree'. This method of 'Silk Flower Applique' is easy and is a hand work project, with the border being the only machine sewn part.



#204 "WALTZING FLOWERS" – Linda Hammontree, Instructor

Class Description: All levels. Machine required.



In this class you will learn how to make a circle block **WITHOUT** pins, templates or rotary cutter. And not appliquéd! From this simple block you will be able to make an easy waltzing flower table runner or a "cut circle" block. In class you will be able to finish the table runner top.

#205 "BASICALLY X-BLOCKS" – Martha Ethridge, Instructor

Class description: Confident beginner. Machine required. Students need to purchase the X-block template. These will be available through the vendors if students cannot find them at their local quilt shop. Martha will not have them in class.

Discover the exciting new quilting style of the X-Block rotary cutting tool. This is a great new way to cut blocks. For anyone that wants to create a quick and easy quilt. Make blocks from strips or 9-patches and design your own pattern or choose from any of the ones created for the X-Block tool.



AFTERNOON CLASSES (half-day)

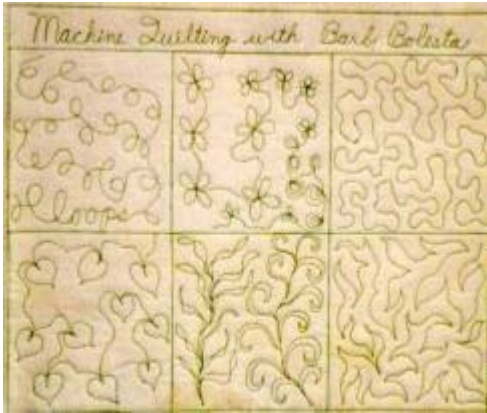
#206 "TEA TIME TABLE RUNNER" – Billie Lauder



Class Description: All Levels welcome. Machine required. **\$15 book fee required.** Class based on Billie's "Tea Time" book. Learn how to construct a special teacup using foundation paper methods. Start with your teacup collection, and turn it into a

table runner. Other objects to be covered will be cups, saucers, plates, tea pots, creamer, and sugar bowl. Ideas for other projects will be shown: Quilts, table runner, wall hanging and other goodies.

#207 “BEGINNING MACHINE QUILTING” – Barb Bolesta



Class Description: beginning skill level. Machine required

This class is on free-motion machine quilting on a standard sewing machine. Students will bring three small muslin quilt sets for practice. Various all-over designs, machine settings, batting, thread, feet, and needles will be covered.

#208 “SILK EXPERIENCE” – Dolores Keaton, Instructor

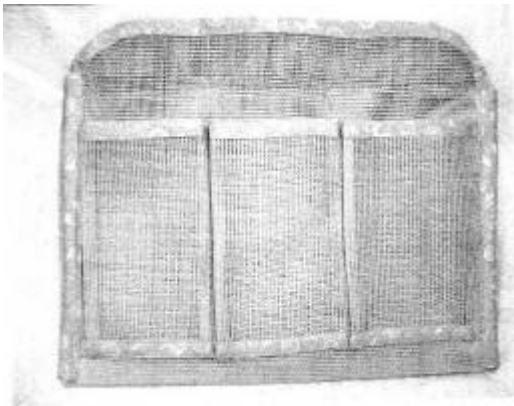
Class Description: All Levels. Machine required. \$5 kit fee for silk and fusible material.

This class will expand your design abilities, and let you try something new. I have been teaching this technique for several years and decided to give even more freedom to the student. After taking this class, I hope you will be able to look at using this technique in more projects for the future.



#209 “IT’S IN THE BAG” – Cheri’ Hofeldt, Instructor

Class Description: All Levels. Machine required. \$20 optional kit available from instructor.



The Ultimate Organizer: now that you’ve made all those wonderful totes, it’s time to organize the inside. This organizer has 7 custom pockets, including a secure internal zippered pocket and two pen pockets. You can change bags in a flash. Since it’s made with “Pet Screen” you see everything stored in your organizer.

LATE AFTERNOON CLASS THAT EVERYONE CAN TAKE 4:00 P.M. – 5:00 P.M.

#210 “Care, Repair and Storage of Your Treasured Heirlooms” – Hallye Bone, Instructor

Class Description: For anyone who loves and treasures quilts. \$5 fee on registration form.

This class is not just for vintage quilts! Hallye has been laundering and repairing quilts, old and new, for 35 years. She lectures on quilt care and has written a book, “*Caring for Your Quilts.*” She will explain the methods for proper cleaning of your quilt, and show you how to repair torn and worn bindings and pieces without affecting the value. She will also advise you on how to store quilts and display them.

2009 Fall Retreat Faculty

Billie Lauder – See Page 2 for the biography of our keynote speaker

Nancy Barnes - Nancy has been quilting since her Grandma and Aunt taught her and her sister hand piecing when she was 9. In the 60's and 70's they both tied numerous madras fabrics into quilts for home use and gifts. By the 80's, Nancy was sewing for her children and began to get into quilting by machine. She is a member of 4 guilds in the St. Louis area where she teaches frequently. Houston is the destination every November where she takes several classes and shops the 1000 booths at the Quilt Festival, bringing back new quilt ideas to share.

Barb Bolesta - I've been sewing for more years than I'm willing to admit to, and a quilter for the last 20 years. I teach classes on dozens of techniques and patterns, including many of my own designs. I've published two books of multi-sized appliqué patterns. A couple years ago I became a mid-arm quilter with my HQ16 and can now make bed quilts and actually enjoy the quilting. In my other life, I'm a foster mom for Heartland Humane Society, an animal rescue group, and foster cats and kittens. Hopefully, by the time you read this, my 16 kittens and two adult cats will have been adopted. My husband John and I live in O'Fallon, MO, have been married for almost 38 years, and have a daughter getting married this October on Halloween. Everybody is to be in costume!

Hallye Bone - Hallye has been quilting since 1967. A former high school teacher, she's been teaching quilt making skills since 1980. Hallye's work for the Smithsonian Institution and her quilt repair business created her interest in vintage quilts. She became an appraiser, certified in quilted textiles, through the AQS in Paducah. She has written for many quilt magazines. Her book *Caring for Your Quilts*, was published in 2008. She travels extensively, lecturing, teaching, and appraising. She teaches at Patches, Etc. in St. Charles, Missouri and at all three Jackman's stores in the St. Louis and Illinois area. Her love of quilts and quilters is contagious. Hallye says she quilts everyday and treasures the friends she has made through quilting.

Carol Carney – Carol began sewing at about age six. Early experience involved dressing her Barbie dolls, then making some of her own clothes. Carol has continued to sew all her life (length of which is withheld). Carol took her first quilting class in Festus in about 1984, joined her first Quilting Guild in Chicago before 1986, opened a stitching shop in Galina, Ill., hence the name Cobblestone Cupboard a couple of years later, followed by Cobblestone Cupboard the quilt shop in Dubuque soon after. We got tired of the short summers so we moved the shop to the Festus area about 1995.

Martha Ethridge - Martha was taught to sew by her grandmother when young. She teaches basic quilt piecing, and beyond, in quilt shops and to guilds. Martha continues to learn, and improve, her knowledge by attending workshops and classes at quilt shows such as at AQS in Paducah and Nashville, and the IQA shows in Houston and Chicago. In Paducah, Martha took the Quilt Appraisal classes with Bobbie Aug and Gerald Roy and has been a professional quilt appraiser for several years. She spent a week in Wisconsin with Betty Cotton to become a Certified Cotton Theory Instructor in 2005. Most recently in 2009, she has taken the NQA class for Quilt lodging in Columbus, Ohio, and the Clearview of Quilting Teacher Certification in Ft. Collins, CO. In addition to teaching at quilt shops and guilds, Martha has been asked by others to make quilts for them. She enjoys working with new ideas in quilting and doing the traditional also. Martha has been president of her local guild and continues to be a part of that guild, teaching and sharing with her friends.

Linda Hammontree - Linda is a third generation quilter who has been quilting her whole life. As a little girl she helped by cutting out quilt pieces under the shade tree. Her mother is a traditional quilter, her daughter (also a quilter) is into art quilts. Linda is somewhere in between. She is always on the lookout for a way to "make it easier". Linda loves applique, especially with wool. Linda has taught several classes in wool applique as well as piecing curves the easy way. Linda is a founding member of the Nighttime Strippers Quilt Guild and has served as Treasurer, Secretary, Vice-president, and is President-elect of the Missouri State Quilter's Guild.

Rebecca Hart - I am better known as Beckee. I live in Belton, just south of Kansas City, with my husband, Larry. We moved to Carnegie Village (a retirement village) three years ago. I have been quilting since the early 80's, and for the most part, I am self taught. I have been a member of MSQG for over 10 years, and have loved every meeting and retreat. You will always find a friend here and at least 100 people to talk to. I have taught my technique, called "Silk Flower Applique" several times. I developed the technique because I was "lousy at appliqué" and wanted to do it so much, my brain figured out that silk flowers did not need the edges turned under. I did take a year and forced myself to try every method of applique' until I found one that I was comfortable with and enjoyed doing, so I can now do regular applique' but I still love the silk flower method and use it often. I enjoy teaching the technique and hope to meet you in class soon.

Cheri' Hofeldt — Cheri' has been quilting 25 years and started her Longarm quilting business 11 years ago. For over 12 years, she has been teaching classes on cathedral windows, working with denim, memory quilts, and now her totebag/purse organizer. Fun is the order of the day and there's always some kind of giveaway. Cheri' has also done trunk shows and skits for various organizations. Cheri' has been Fall Retreat Chairman, and is the outgoing President of MSQG.

Dolores Keaton — Dolores has been addicted to quilting since 1998. Her quilts have won awards in several Missouri shows. She began working with designer, Toby Lischko in 2004 and has pieced about 35 quilt tops for her. Toby then quilted them and they have appeared in many of our national quilt magazines. Her love of silk started a collection of silk blouses from a Thrift Shop. She'll share how workable silk can be to give a different glow to your quilts. She will have varieties of silk for you.

Nellie Mueller — Nellie has been teaching for guilds and quilt shops since 1988. She often appears as Grandma Ima Quilter, who shares the humorous side of quilting. Nellie has a home-based business, *Sewing Basket*, and has published several patterns. Her newest class offering is purse-making: patterns, skills and tips. Nellie lives in Pacific and is a member of Piecemakers (St. Clair), and Bits 'N Pieces (Ballwin).

FRIENDSHIP BLOCK

These blocks will be raffled off, the winner takes all! (Depending on how many we get, we may have more than one winner!)

Make as many blocks as you like, the more the better chance you have to win!!

The block is simple, add a special touch by adding your words of wisdom in the center of the light fabric. Use a Pigma Pen or embroidery... be creative and share a thought, saying or anything that comes to mind.

Block size: 6 inches

Materials: Two different colors:

Light beige or white for center and a medium pastel color

Step 1:

Cut 3 patches 3½" square from the pastel color fabric.

Cut 3 patches 3½" square from the white/beige fabric.

Cut 3 patches 2½" square from the white/beige fabric.

Step 2:

Place one 3½" square of pastel fabric and one 3½" square of white fabric, right sides together. Draw a line on the diagonal on the lighter fabric from one corner to the opposite corner. Stitch ¼" on each side of the drawn line.

Cut on the drawn line with your rotary cutter or scissors to separate the square into triangles.

Fold open the square and press the seam allowances toward the darker fabric. Using your plastic ruler, trim the square to be 2 ½". Be sure to use the 45 degree angle on your ruler.

Complete 6 units of pastel/white half square triangles.

Step 3 - Sew row one - half square triangle, half square triangle, white square.

Step 4 - Sew row two - half square triangle, white square, half square triangle.

Step 5 - Sew row three - white square, half square triangle, half square triangle.

Step 6 - Sew the rows together to complete the friendship name chain quilt block.



Every member is receiving this newsletter in black and white hard copy, by USPS mail, to better inform you about all the Fall Retreat offers. The newsletter, including class descriptions and class project pictures in color, is on our website: www.msqg.org.

“MISSOURI WALTZ”
2009 MSQG FALL RETREAT
Inn at Grand Glaize – Osage Beach, MO (573) 348-4731
September 25-27, 2009

Please read all information before filling out your registration form. PLEASE PRINT!

Name _____
 Address _____
 City _____ State _____ Zip _____
 Phone _____ Email _____

- ◆ MSQG membership must be current (Membership form is on the back of this newsletter)
- ◆ Non-member guests must pay a \$30.00 supplemental fee.
- ◆ Registration closes on August 15.
- ◆ No refunds after August 15 (hotel needs a down payment by then).
- ◆ Registrar Terri will be sending you a confirmation letter after August 15 with all the final retreat details and class supply lists. If you supply an email address, she will confirm that she has received your registration.

The Inn at Grand Glaize notes that room and special requests cannot be guaranteed, however, we will make every effort to accommodate your needs.

#1 Your name _____ Roommates:
 #2 _____ #3 _____ #4 _____
 Please prearrange your own roommate. Each person MUST list all roommates on EACH registration form.

Needed: _____ Handicap room _____ Special needs* _____ Special Meals* _____ Roommate
 Check one: _____ Smoking _____ Non-smoking _____ King bed _____ Double beds

_____ Single room (Includes all meals and programs)	\$265.00 per person	\$ _____
_____ Double room (Includes all meals and programs)	\$230.00 per person	\$ _____
_____ 3 in a room (Includes all meals and programs)	\$210.00 per person	\$ _____
_____ 4 in a room (Includes all meals and programs)	\$195.00 per person	\$ _____
_____ All day class or second class (to be billed do not include)	\$ 20.00	\$ _____
_____ Non-member supplemental fee	\$ 10.00	\$ _____
_____ Full commuter (meals & programs only)	\$155.00	\$ _____
_____ Saturday commuter (program, lunch, banquet)	\$130.00	\$ _____
_____ Friday night “Fabulously fast & easy scrap quilts”	\$ 5.00	\$ _____
_____ Saturday 4:00 to 5:00 Hallye Bone “Care & Repair”	\$ 5.00	\$ _____
_____ Total from Reverse side for T’s or Sweatshirt		\$ _____
TOTAL DUE AT TIME OF REGISTRATION		\$ _____
Check # _____		

Please make check payable to: MSQG or Missouri State Quilters Guild
Mail to: Terri Kanyuck
145 Forest Drive
Labadie, MO 63055

*More info: _____ **Complete reverse side before mailing**

Advance Ordering Available for MSQG T-shirts and Sweatshirts

MSQG T-shirts and sweatshirts are yellow and printed with the MSQG logo in three colors on the upper left shoulder. There is no date so you can wear these garments for years. All orders must be placed in advance with your registration. There will be no extras available at retreat.

___ T-shirt (short sleeve) Circle size: S M L XL	\$8.00	\$ _____
___ T-shirt (short sleeve) Circle size: 2X 3X	\$10.00	\$ _____
___ T-shirt (long sleeve) Circle size: S M L XL	\$10.00	\$ _____
___ T-shirt (long sleeve) Circle size: 2X 3X	\$12.00	\$ _____
___ Sweatshirt Circle size: S M L XL	\$11.00	\$ _____
___ Sweatshirt Circle: 2X 3X	\$13.00	\$ _____
TOTAL FOR T'S & SWEATS (add to reverse side also)		\$ _____

CLASS REGISTRATION "MISSOURI WALTZ" 2009

Class assignments will be made in the order they are received, so the sooner you mail your form the better your chances are to get your first choice. Forms may be mailed **no earlier** than July 1 (postmarked) to account for differences in when members receive their forms. There is an additional \$20.00 fee for a full-day or second half-day class (to be billed after class confirmation).

A confirmation letter and supply list will be sent to you after August 15, 2009.

Please mark your 1st, 2nd, and 3rd choices for classes below by filling in the number and class title and circle any other options.

Friday night "Fabulously fast and easy scrap quilts". Yes No (please circle)

1st choice # _____ Class title _____

2nd choice # _____ Class title _____

3rd choice # _____ Class title _____

Hallye Bone's 1 hour class 4:00 – 5:00 Saturday:

"Care and repair" of quilts based on her new book. Yes No (please circle)

****Note:** If your assigned class requires a kit (as specified in the class supply list which you will receive with your confirmation letter after August 15), you will pay the instructor in class.

PLEASE make a copy of both sides of this registration form before mailing for your own records.

Please make check payable to: MSQG or Missouri State Quilters Guild

**Mail to: Terri Kanyuck
145 Forest Drive
Labadie, MO 63055**

From the office of the Secretary – MSQG Summary of June 6, 2009 Board Meeting

The Board of Directors of Missouri State Quilters Guild met during the 2009 lunch break at the spring annual meeting at Lone Jack, MO. Those present were Natalie Rullkoetter, Linda Hammontree, Nellie Mueller, Pamela Williams, Joy Taylor, Sharon Harmon, Cheri' Hofeldt, Donna Reed, Terri Kanyuck, Josie Hermsmeyer, Gerri Friese, Celeste Highberg, Pat Smith, Lois Ervin, and Rosslyn Steinmeyer.

Minutes of the March 7, 2009 board meeting were corrected and accepted.

TREASURER'S REPORT: Joy Taylor reported that as of May 31, 2009, there is \$569.79 in the checking account, \$11,830.38 in the savings account, and \$25,169.52 in the CD. The report was accepted as read. Incoming Treasurer Pat Smith will investigate the CD interest rate.

UNFINISHED BUSINESS: Pat Smith reported on bonding policies. It was decided by the board that it is not cost effective, nor productive to proceed with bonding.

There was a discussion about the Internet meeting that was approved at the last meeting. We discussed having an executive or work meeting via the Internet because it is a good way to communicate, especially during bad weather, and it is cost effective.

NEW BUSINESS: Spring meeting: Linda Hammontree reported that expenses for the spring meeting were \$1,883 and the income was \$1,885. There were 70 in attendance. **Spring meeting** for 2010 will be April 9 & 10 in Mexico, Missouri.

Nominating committee: Nellie Mueller reported that we have a full board and everyone is well suited to their jobs. **The following people were voted on and approved for the following positions: president-Linda Hammontree, vice-president-Celeste Highberg, treasurer-Pat Smith, and secretary-Pamela Williams. The following people were appointed by the president and approved by the board: ways and means-Natalie Rullkoetter, newsletter-Ellen O'Bryan, HAL-Josie Hermsmeyer, 2009 retreat-Toby Lischko, publicity-Mary Thompson, membership-Donna Reed, web maven-Susan Bell, grants-Ruth Rakop, and nominating committee members-Nellie Mueller, Jill Harmon, Lois Ervin, and Rosslyn Steinmeyer.**

Fall retreat: Terri Kanyuck reported for Toby Lischko that plans are progressing for the fall retreat. July 1 will be the beginning date for registration and Terri will be her registrar.

Membership: Donna Reed reported that we have 289 members with 27 joining since January 1, 2009. There were new members who joined today during the spring meeting. Linda Hammontree will be going to Rockville, MO, to speak to the guild there about MSQG.

Ways and Means: Natalie Rullkoetter modeled the t-shirt that will offered for sale at fall retreat. She still has pins, luggage tags, and CD's for sale. Instead of having raffle items at retreat we will have "A quarter for a quarter".

HAL: Josie Hermsmeyer plans to pare down the records in the archives and will keep just the last five years of records. Photos from the albums will be put on a CD or thumb drive.

Grants: A thank you note was received from Gayla Barber.

The next board meeting will be at fall retreat. Board members are to have their budgets ready. Pat Smith will look back at the expenses for the past two years. Powell Gardens is waiting for instructions from MSQG as to the wording for the tag that is to be placed on the bench that our organization donated.

Respectfully submitted,

Pamela Williams, secretary

**HAVE YOU PAID YOUR
MSQG DUES YET?**

Dues are now due and if not paid by the end of August, you will be dropped from membership. Dues must be paid by July 31 to be included in the 2009-2010 Directory. Find your dues due date next to your name on your membership card or on the label on your MSQG directory, or this newsletter, or contact me, Donna Reed. Also if anyone has paid their dues and has a problem, contact me, Donna Reed at ereed002@centurytel.net or 636-482-4591



For information on the 2010 Spring Meeting call Celeste Highberg, 730 Silo Ln., Villa Ridge MO 63089, 636/742-2839

Have you paid your dues yet?



FROM OUR LEADER.....

Dear Quilting Friends,

As I write my last article as President of MSQG, I not only reflect on the past year, but the past 15 years as a member. So many things have changed and yet the purpose of MSQG has remained the same – to promote the art of quilting. Each meeting, retreat, or newsletter feature is intended to help our quilters with techniques, patterns, or services which will enhance their quilt projects as well as create an atmosphere of camaraderie where we can share ideas and provide mentoring for new quilters that will keep the art alive going forward.

At the most recent Annual Meeting in Lone Jack, recycling was the theme of the day. Each member attending received several items made from recycled products. They were so inventive and will be used by this quilter. We also thank Glenda Sha for a great class and presentation.

I want to express my appreciation to Linda Hammontree and her crew for putting together the Lone Jack meeting, and all of the 2008-2009 MSQG board and committee members for their hard work and support this past year.

I also wish to congratulate those who have stepped up to serve for 2009-2010. They are Linda Hammontree, Celeste Highberg, Pam Williams, Pat Smith, Ellen O'Bryan, Donna Reed, Mary Thompson, Gerri Friese, Josie Hermsmeyer, Susan Bell, Natalie Rullkoetter, Toby Lischko, Ruth Rakop, Nellie Mueller, Jill Harmon, Lois Erwin and Rosslyn Steinmeyer.

If you happen to know any of these ladies or see them at a meeting, please thank them for their service. It is their dedication which keeps the guild truly "alive." Quiltingly,

Cheri' Hofeldt, MSQG President 2008/2009



FROM OUR NEW LEADER... HAVE YOU READ...

the purpose of MSQG? It is in the front of our membership directory. I wish I could add one more; **To share the fun of quilting.** The others listed are fine and noble, but we don't usually join groups because they are fine and noble. **MSQG is fun.** At the annual meeting we had fun looking at the show and tell (always my favorite part of any meeting). The speaker made looking at our quilt history fun. (But why is it we never see quilts made out of old underwear? Grandpas shorts were pretty wild!). My goal in my year as president is to share the fun of quilting and MSQG. I want to hear more Grandma Quilter stories. I want more members to "show and tell". Your quilt doesn't have to be show quality. I want to see them ALL!! I want new members to join our guild. I have been told that "I don't quilt good enough to belong." Whoa....that is why you join to learn new quilting skills. I ask all members to help promote the guild. Bring a new person to retreat. Do you need a speaker at your guild meeting? Let me know. If I can't come, I will find someone that can.

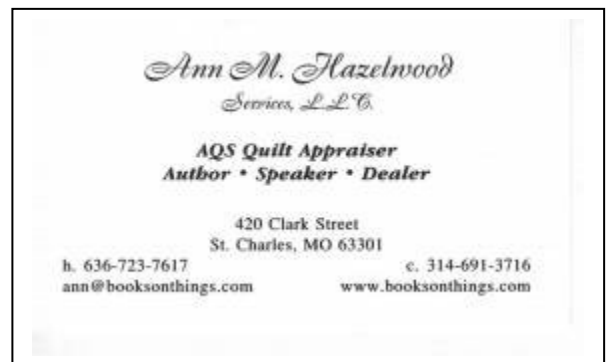
One last note..Thanks Cheri' for a good year. You are always a tough act to follow.

Linda Hammontree, MSQG President 2009/2010

Message from Nellie Mueller, Nominating Chair

Dear MSQG members: As Co-chair of the Nominating Committee, I certify that the entire slate of candidates was elected at the June 6 meeting in Lone Jack (list in meeting summary of this newsletter). Fifteen votes were cast via mail or email. Congratulations to the newly elected board members and Nominating Committee Members.

Regards,
Nellie Mueller



TREASURER'S REPORT March, April, May 2009

TREASURER'S REPORT March 31, 2009

BOONE COUNTY NATIONAL BANK: Balance \$-0

Boone County National Bank Account closed in January, 2009

BANK OF AMERICA CHECKING: Balance 03/01/09 \$507.32

Deposit: \$1000.00 transfer from savings account

\$ 95.00 membership dues & pin

\$ 375.00 Membership dues & pins

Total Deposits \$1470.00

Checks Cleared Bank: #1010 \$86.10 Linda Hammontree-mileage bd.mtg.

#1011 \$73.35 Donna Reed--- -membership exp.

1012 \$73.50 Terri Kanyuck-mileage bd.mtg.

#1013 \$56.00 Pamela Williams-mileage bd. Mtg.

#1014 \$291.55 Susan Bell-mileage & web page

#1015 \$73.50 Toby Lischko---mileage

#1016 \$69.30 Ellen O'Bryan-mileage

#1017 \$45.50 Cheri' Hofeldt-mileage

#1018 \$39.56 The Business Center- -newsletter

1019 \$23 7.83 Joy Taylor--Treas. Supplies--mileage

#1020 \$125.00 Cheri' Hofeldt-hotel mileage

Total Checks \$1171.19

Bank of America Checking Account Balance 3/31/09 \$806.13

Business Interest Maximizer A/C 3/1/09 \$12,582.10

Interest Accumulation \$ 9.05

Withdrawal to checking A/C \$ 1,000.00

Account B.I.M. account 3/31/09 \$11,591.15

9 month Risk Free C.D. \$25,055.49 This should include interest earned.

TREASURER'S REPORT 04/31/09

BANK OF AMERICA CHECKING: Balance 03/31/09 \$806.13

Deposits: 4/3/09 \$160.00 Membership dues

4/15/09 \$225.00 Membership dues

4/21/09 \$575.00 Spring Meeting 6/6/09

4/23/09 (-20.00) Return check from member

Total Deposits \$940.00

Checks Cleared Bank: #1021 \$ 48.49 The Business Center (newsletter)

#1022 \$ 58.80 Ellen O'Bryan (newsletter postage)

\$ 5.00 Charge for return check from member

Total Checks \$ 112.29

Bank of America Checking Account Balance 4/30/09 \$1633.84

Business Interest Maximizer A/C 3/31/09 \$11591.15

Interest + 8.57

Withdrawal dep.tkts 33.00

Business Interest Maximizer A/C 4/30/09 \$11566.72

9 Month Risk Free CD \$25,113.27

TREASURER'S REPORT 05/31/09

BANK OF AMERICA CHECKING: Balance 04/30/09 \$1633.84

Deposits: 5-23-09 \$115.00 Membership dues

5-21-09 \$760.00

Total Deposits \$875.00

Checks Cleared Bank: # 1023 \$ 31.75 Quality Copy Service (membership)

1024 \$385.50 Powell Gardens (Spring meeting)

#1028 \$129.02 Donna Reed (membership postage)

Total Checks \$546.27

Outstanding checks: #1025 \$350.00 John Larman (Lone Jack Civic Center)

1026 \$ 20.00 Ruth Ellen Wright -refund spring mtg.

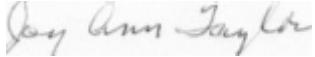
#1027 \$384.30 Sister's Coffee Shop (lunch spring mtg)

#1029 \$638.75 Glenda Sha (teacher, kits, mileage spg.mtg)

Total outstanding \$1393.05

TREASURER'S REPORT 5/31/09 CONTINUED

Bank of America Checking Account Balance 5/31/09	\$569.79
Business Interest Maximizer A/C 5/31/09	\$11,830.38
9 month Risk Free CD	\$25,169.52 This should include interest earned



Joy Ann Taylor, Treasurer

MSQG WENT GREEN JUNE 6, 2009 AT MSQG WENT GREEN LONE JACK MO

Well, the 20th annual meeting of the Missouri State Quilter's Guild has come and gone. Now we are starting on our next 20 years. We had 69 people in attendance including two husbands and one granddaughter. Fifteen members took part in a wool class taught by Glenda Sha in the morning and quite a few completed their project before the meeting was over. A number of door prizes were given out donated by Perfect Promotions, Ellie Upchurch, Old Cedar Woodworking, Pat Smith, Hammontree Services, The Rabbit's Lair. And the Federal Reserve Bank donated recycled money. Pat Smith gave a great talk on how many things we can recycle as quilters and each member received a rotary cutter bag, travel sewing tin, and travel tissue holders (made by Natalie Rullkoelter and Pat Smith), all made from recycled materials. Lots of UFO's were adopted. Glenda's Lecture on *Quilters- The Original Recyclers* was very interesting. Powell Gardens was beautiful and warm. The Heartland Harvest Garden needs to do a little growing but the flowers were beautiful. Plan now for April 9-10, 2010 for the next annual meeting....in Acapulco???

Linda Hammontree, Vice-President MSQG, 2008-2009

Member Gloria Krumsiek Published

Gloria Krumsiek of Gravois Mills, has an original quilt design featured in the July/August 2009 issue of Quiltmaker magazine. The quilt *Dusky Meadows* is inspired by the collection of Andover "Meadowsweet" fabrics designed by Gloria's friend, Renée Nanneman.

(Editor's note: If you know of any of our members who are published, please let me know, so we can share the good news. eob)

Sew Many Quilts to See, Sew Little Time... a calendar of quilting events

June 18, 19 and 20 Free quilt show sponsored by Unique Stitchers 'n' More, Stover Community Center in the Stover park on Hwy 52 in Stover. For more information contact--Myrna Schroder mjsmls@windstream.net or 573-377-2067

July 25 (10a - 3p) Brookfield, MO Linn County Piecemakers' Quilt Guild Vintage Quilt Show, Park Baptist Church in Brookfield.

Sept 11 & 12, Hometown Stitches @ The Hickory Stick, Hannibal MO

Sept 12 Heartland Quilters, Owensville, Missouri. 9a-4p, Located in the fair exhibit hall in the city park on highway 28.

Sept. 25 - 27 MSQG Fall Retreat - Inn at the Grand Glaize, Lake Ozark MO.

Oct. 9 (9a-8p), Oct.10 (9a-7p), Oct. 11 (9a-5p) Country Shop Hop (13 shops)

Nov. 6 (2p-9p), Nov. 7 (9a-5p) Lee's Summit Quilters Guild show, Holy Spirit Catholic Church, 1800 S.W. 150 Highway, Lee's Summit Mo 64082 816/537-6990, www.lsqilters.com Beth Kurzava at bethk@sbcglobal.net

MISSOURI STATE QUILTERS GUILD

BOARD OF DIRECTORS AND COMMITTEE CHAIRS 2008-2009

President*	Cheri Hofeldt 27387 Courtney Pl.Ct. Warrenton MO 63383 636/456-3070 cherihofeldt@yahoo.com	Nominating	Nellie Mueller 1970 Woodhaven Lane Pacific MO 63069-0554 636/257-3716 sew197@yahoo.com
Vice President*	Linda Hammontree 1216 College Pleasant Hill MO 64080 816/210-2523 lhtree@comcast.net	Newsletter*	Ellen A. O'Bryan 34 Hillcrest Dr. Hannibal MO 63401 573/221-7282 eobhblmo@yahoo.com
Treasurer *	Joy Ann Taylor 15701 S. 1200 Road Nevada MO 64772 417/667-6913 joynana@sofnet.com	Spring 2009 Meeting	Vice President
Secretary*	Pamela Williams 22884 Hwy C Belle MO 65013 573/859-1258 flying@fidnet.com	Ways & Means*	Natalie Rullkoetter 2481 Bear Creek Dr. Wentzville MO 63385 636/639-5698 nrullkoe@centurytel.net
Membership*	Donna Reed 5166 Hwy 94 South Augusta MO 63332 636-482-4591 ereed002@centurytel.net	Library, Archives Historian*	Sharon Harmon 23005 E. 175 th St. Pleasant Hill MO 64080 816/540-3290 sharon.harmon@umb.com
Publicity*	Mary Thompson 627 Central Hannibal MO 63401 573/221-0981 mthompson627@hotmail.com	Web Maven*	Susan Bell 17763 Sand Creek Bottom Rd. Novinger MO 63559 660/488-5449 mombell@nemr.net
2009 Retreat	Toby Lischko 5625 Jenny Lane Robertsville MO 63072 636/271-9755 tlischko@yahoo.com	Regional Meeting*	Bonnie Cox 15013 E 33 rd St. Independence MO 64055 816/373-1336 tweedy1976@sbcglobal.net
Audit	Josie Hermsmeyer 16421 Cove Landing Ct. Wildwood MO 63040 jhermsmeyer@charter.net	2008 Retreat	Terri Kanyuck 145 Forest Dr Labadie MO 63055 636-451-5799 i_quilt2@yahoo.com
* Board Member		Grants	Ruth Rakop 23801 County Rd 7640 Newburg Mo 65550 573/762-2038 hrrakop@socket.net

Next Board meeting is

Saturday, Sept. 26, 2009,
following the Saturday evening
event at the Fall Retreat. All
members are welcome. **Agenda
items are due to President Linda
1 week prior to meeting.**

Ravelings

...is the newsletter published four times a year for members of the Missouri State Quilters Guild, a non-profit organization formed to promote quilt making, preserve our heritage, allow quilters to meet new quilters statewide, inform quilters of current trends, provide great workshop/guest speakers.

No part of this publication may be reproduced, stored in a retrieval system or transmitted in any form or by any means, electronic, mechanical, photocopying, recording or otherwise, for other than MSQG members personal use, without prior permission of the MSQG. All rights reserved.

Contact Newsletter Editor for Advertising.

Deadline for the July/Aug 2009 issue is July 31, 2009.

Use this Form to Join MSQG Today

Please Print

_____ New Member _____ Renewal My NQA Number _____

Name _____

Address _____

City _____ State _____ Zip _____

Home Phone _____ Cell Phone _____

E-Mail Address _____

Guild/Club Affiliations (if any) _____

Local Offices Held (if any) _____

Dues are \$20 for 1 year July 1 - June 30) _____

Dues are \$50 for 3 years (July 1 - June 30) _____

Dues are \$15 for $\frac{1}{2}$ year (January - June 30) _____

MSQG Pin \$5 _____

Check # _____ Total _____

**Make check payable to Missouri State Quilters Guild and send to: Donna Reed
5166 S Hwy 94 - Augusta MO 63332 - 636-482-4591 - ereed002@centurytel.net**

If you receive this newsletter by snail mail, your label includes your membership expiration year following your name.

Ravelings – a publication of the
Missouri State Quilters Guild
Ellen A. O'Bryan
34 Hillcrest
Hannibal MO 63401