

2006
Edition

Michigan State University's
"Things to Do"
at
MSU

An Activity Guide for Families



For family resources, visit:
<http://www.frc.msu.edu>

For these activities and more, go to:
<http://www.spartanyouth.msu.edu>

MSU is an affirmative-action/equal-opportunity institution.



MICHIGAN STATE
UNIVERSITY

Brought to you by:
MSU Family Resource Center
1407 S. Harrison, Suite 225
East Lansing, MI 48823

<http://www.frc.msu.edu>
artibeem@msu.edu
(517) 432-3745

About the Family Resource Center

The Family Resource Center coordinates information and resources to assist faculty, staff, and students who are balancing family responsibilities with education and/or employment. This activity guide assists families in exploring their community and helps them become acquainted with this rich environment.

For more information about FRC services:

Phone: (517) 432-3745

Email: artibeem@hr.msu.edu

Web: <http://www.frc.msu.edu>.

Booklet designed and revised by Michelle Artibee
(FRC Administrative Assistant, artibeem@hr.msu.edu).

Last updated: 3/2006

Miscellaneous

Junior Spartan Club (432-2607)

<http://www.msu.edu/user/jr.sparty/>
Take part in the fun and excitement of Spartan Athletics. Join the Junior Spartan Club open to Pre-K-8th grade. Membership includes a t-shirt, newsletter, website, a Go Green card and free admission to selected home sporting events and special events. Individual membership is \$20; family membership with 3 or more children is \$50.

City of East Lansing Recreation & Arts

(333-2580)
ELRA offers many classes for youth and adults. They host numerous special events and summer sports camps. Call for a current catalog. ELRA also offers Day camps for children entering kindergarten through 8th grade. Each week is theme based and part time or full time is available. For additional information on the summer camps call 337-7615.

YMCA

<http://www.ymcaoflansing.org>
The YMCA has three branches in Lansing to serve you, offer-

ing classes, sports for ages Pre-K thru High School, and summer camps and clubs. Call for a brochure, or come by for a visit!

Oak Park YMCA
900 Long Blvd.
Lansing, MI, 48911
517-694-3901

Parkwood YMCA
2306 Haslett Rd.
E. Lansing, MI 48823
517-332-8657

Westside Community
3700 Old Lansing Rd.
Lansing, MI 48917
517-316-YMCA

Downtown Wellness Center
119 N. Washington Square
Lansing, MI 48933
517-484-4000

Mystic Lake Camp
P.O. Box 100
Lake, MI 48632
989-544-2844

For information about parks:

Ingham County parks
676-2233

Eaton County parks
627-7351

Lansing Parks & Recreation
483-4277

<http://parks.cityoflansingmi.com/activities.asp>



Table of Contents

Activity Resources / Maps / Parking	4-5
Art & Music	6-8
Academic Programs for Children	9-10
Museums	11
Animals & Gardens	12-14
Campus Attractions	15
Sports & Activities	16-19
Off Campus Activities & Attractions	20-25
Calendar (On/Off Campus Events)	26-29
Miscellaneous	30

Activity Resources

"Things to do at MSU"

An Activity Guide for Families

www.frc.msu.edu/ttd.cfm

This activity guide is also available online at the Family Resource Center website. You may order copies online, browse the listings, or print a .pdf copy of the guide.

Summer School Aged Childcare Programs: Camps and More

www.ingham.org/hd/oyc

For summer camp listings, visit the Office for Young Children's website or call (517) 887-4319.

Tour MSU

www.tour.msu.edu

Visit this website to learn more about touring MSU, places to eat and places to visit!

City of East Lansing

www.cityofeastlansing.com/

The City of East Lansing website has a calendar of community events and family activities as well as general city information.

Spartan Youth Programs

www.SpartanYouth.msu.edu

The Spartan Youth Programs Web site provides parents, youth, and educators with an easy way to access information about MSU's pre-college programs and activities for Pre-K through 12th graders. The site organizes the University's programs and activities by grade levels and by topics. Visitors to the site can find brief abstracts as well as specific contact information within the list of topics, which includes Art, Drama and Music, Animal Care, Business, College Preparation, Computers, Engineering, Leadership Skills, Math & Science, Sports & Fitness, The Environment, and Writing & Language. This site contains a wide variety of activities, such as college courses, summer programs, camps, places to visit, reading materials, software, and Websites.

University Apartment Programs

(355-1101)

www.housing.msu.edu/uapts

The Residence Life staff in University Apartments is committed to the development

annual event featuring one of mid-Michigan's largest parades, a championship rodeo, flea market, fireworks, more than 250 arts and crafts exhibits, an old-fashioned saloon and much more! (517) 543-3325.

15-16th - **Old Town Bluesfest**, Lansing. The streets of Old Town are filled with blues music. See live performances on two stages, and enjoy food vendors and beverage tents. (517) 371-4600.

16th - **Down Home Days**, Mason. Browse through the many arts and crafts exhibits while enjoying local entertainment on the historic Ingham County Courthouse Square. (517) 676-1046.

29th - **MSU Homecoming Parade**, East Lansing. <http://homecoming.msu.edu/> (517) 355-8314.

OCTOBER

13-15th - **Color Cruise and Island Festival**, Grand Ledge. Take a trip down memory lane in an old-fashioned covered wagon or glide down the scenic Grand River on a riverboat. Pioneer demonstrations captivate visitors with cider pressing, live folk music, traditional dance and more. (517) 627-2383.

21st-22nd - **Apple Butter Festival**, Lansing. Tempt your taste buds with fresh cider and apple butter being made right before your eyes. (517) 483-4224.

NOVEMBER

17th - **Silver Bells in the City**, Lansing. The city will be aglow with holiday decorations as we light Michigan's official holiday tree. Over 50,000 people will line the streets to watch the electric light parade and join the fun at this free family event. (517-372-4636.

19th - **Global Festival**, East Lansing. This multicultural event celebrates and creates awareness of international cultures through displays, food, and performances. This event is open to the entire community. There is no admission charge. Held at the MSU Union. (517) 353-1720.

23rd - December 31st - **Wonderland of Lights**, Lansing. Potter Park Zoo is transformed into a magical winter wonderland with thousands of holiday lights and extraordinary displays.

25th - December 19th - **Holiday Walk**, Gull Lake/Hickory Corners. Celebrate the holidays with a special tour of the majestic W.K. Kellogg Manor House. Holiday decorations add to the beautiful Tudor home. (269) 671-2416.

DECEMBER

Holiday Home Tour & Festival of Trees, Grand Ledge. Travel to holidays past as you visit the historic Victorian homes, Museum, Opera House, and shops of Grand Ledge. (517) 627-7247. Official date TBA.

AUGUST

4-5th - **Lansing Jazzfest**, Old Town Lansing. Tour the streets of Old Town with its galleries and art exhibits, while you enjoy music from some of the region's best jazz musicians. (517) 371-4600.

5th - **African American Parade and Family Reunion Picnic**, Lansing. The 6th annual parade will take place in Downtown Lansing on Michigan Avenue, followed by a reunion picnic at Ferris Park. Enjoy ethnic foods, craft exhibits, games and more! (517) 388-6377.

5th - **Island Art Fair**, Grand Ledge. The 32nd annual Island Art Fair features 130 arts and crafts exhibits, riverboat rides, food and live music on the Second Island in downtown Grand Ledge. (517) 627-9843.

11-13th - **Great Lakes Folk Festival**, East Lansing. East Lansing plays host to this festival filled with live music stages and a dance pavilion, as well as food and traditional crafts from across America. (517) 355-2370.

11-13th - **Mint Festival**, St. Johns. Celebrate over 100 years of mint farming in Clinton County with an art fair, specialty food concessions, parade, Queen's Pageant and various sporting tournaments. The festival highlight continues to be the world class rodeo. (989) 224-7248.

12th - **Car/Capital Celebration**, Lansing. The birthplace of Oldsmobile transforms into a showplace for antique and collector cars, hot rods and race cars with live entertainment, music and much more. (517) 372-0529.

17-19th - **Dewitt Ox Roast**, DeWitt. For over 50 years the residents of DeWitt have celebrated along the banks of the Looking Glass River with an arts and crafts show, food and beverage tents, a parade, classic car show, entertainment, fireworks at dusk and more! (517) 669-3297.

18-20th - **Capital Area Balloon Rally**, Mason. Over 40 hot air balloons, carnival, flea market, balloon walk, festival food, lawnmower races, sport kites, music, NASCAR simulator and classic car show. (517) 676-1046.

26th - **Caribbean Festival**, Lansing. Lansing will sound, taste and feel like the Caribbean when Lansing Community College's Student Life and Leadership Office brings the Caribbean Festival to town for its annual celebration of music, culture and food. Great entertainment for the whole family. (517) 483-1287.

SEPTEMBER

1st-4th - **North American BBQ Championship**, Mason. National professional as well as regional and local barbeque cooking teams will compete for prizes with the result being brisket, ribs and chicken on the menu for all. Nationally known and regional music performers entertain and activities for children of all ages round out the experience. (517) 242-0000.

6-10th - **Frontier Days**, Charlotte. Pioneer spirited guests will enjoy this

and maintenance of living environments that support the academic, social, and emotional well being of students.

Emphasis is placed on providing services from the University, as well as identifying resources from the Greater Lansing area. Residents and their families living in University Apartments (Cherry Lane and Spartan Village) have the opportunity to take part in many programs and events that are free to the community. In addition, the University Apartments Council of Residents (UACOR), the student government in University Apartments, also sponsors several activities that are financed through a nominal tax collected through the Council.

The dates and times of programs are posted on the website. Events are also advertised in a weekly Umail that is sent to the leaseholder's MSU e-mail account. Additionally, our office addresses conflict issues and oversees facility reservations. For assistance with resident concerns or information needs, please call the Residence Life Assistance Line at 353-9499. The University Apartments Residence Life office is located in 1434 B, Spartan Village, on the MSU campus.

Greater Lansing Convention & Visitors Bureau

www.lansing.org
1-888-2-LANSING

Travel Michigan

www.mi.gov
The State of Michigan Website has information on great things to see and places to visit throughout Michigan. Click on "Travel and Recreation."

Parking

www.dpps.msu.edu
Visitors to campus can park in a pay lot, pay at a meter or purchase a visitor permit (allows for parking in employee spaces). A visitor permit can be purchased at the Visitor Center on Trowbridge Rd. or at the Parking Office located in the Public Safety Building at 87 Red Cedar Rd. For details, contact the MSU Parking Office at 355-8440 or visit our website. The Parking Office is open Monday-Friday, 7:15 AM - 5:00 PM.

Maps

www.msu.edu/maps/index.html
Regional, Lansing area, and campus maps with directions are available online. At this link there are also maps through Mapquest, and Google as well as CATA (Capital Area Transit Authority) bus route maps.

Art & Music

Kresge Art Museum

(353-9834)

<http://www.artmuseum.msu.edu>

Kresge Art Museum presents a variety of interactive tour and art programs for children and families to enjoy together. "Creative Kids at Kresge" is a free art-making series for children aged 5-12 (must be accompanied by an adult) held one Saturday each month. In June, children (4th-6th grades) can explore the museum's collection and make their own art at a week of summer art camp (9 a.m.-noon). Registration and fee required. Scholarships are available. Call the museum for program dates and more information. Located in the Kresge Art Center, at Auditorium and Physics Roads.

MSU Department of Art and Art History

www.art.msu.edu/study/arteducation.html

"Saturday Art" is designed to broaden and enrich the art experiences students obtain in regular school programs. Using the Department of Art facilities at the Kresge Art Center, pre-service teachers in the Art Education Program will teach

the classes under the supervision of Art Education faculty. Classes are taught to children ages 7-18 and cost \$50. The topics and techniques explored change every semester. Visit website for more information.

MSU Community Music School

(355-7661)

<http://www.msu-cms.org>

Located off campus with plenty of free parking, the Community Music School offers lessons on most instruments, Early Childhood Music for newborns, toddlers, and preschoolers, children's choirs, folk music, Suzuki method instruction, classes for children and adults, and Music Therapy Clinical Services. Financial assistance available. Call CMS for more information or to register. Located at 841 Timberlane in East Lansing.

Early Childhood Music

(355-7661)

<http://www.msu-cms.org>

Early Childhood Music Program for newborns, infants, toddlers and pre-schoolers. Classes are designed to help increase children's potential to succeed



JUNE

3rd - **Be a Tourist In Your Own Town**, Lansing. This city-wide celebration showcases the local museums, galleries, theaters and attractions of Greater Lansing. (517) 487-6800.

16-17th - **Gizzard Fest**, Potterville. This annual festival is world renowned and draws over 16,000 people annually. There is a classic car show, arts and crafts, 3 on 3 basketball and softball, tournaments, mini modified pulling tractors, antique tractor show, parade, fireworks, beer tent, music and lots to eat including gizzards.

16-18th - **Riverbank Traditional Pow Wow**, Lansing. Experience the Woodland Indian culture of Michigan at Adado Riverfront Park with programs that highlight dancing, drumming, singing, arts and crafts, food and more. (517) 393-7236.

24th - **Festival of the Sun**, Lansing. Mid-Michigan's premiere wine and microbrew tasting event. Sample wines from around the world and beer brewed in Michigan, along with gourmet food, and dance to jazz/blues bands along the banks of the Grand River. (517) 485-4383.

16-18th - **Red Cedar Jubilee**, Williamston. The Red Cedar Jubilee features parades as well as craft shows, a demolition derby and beverage tents. While in town visit the antiques district. (517) 655-3831.

22nd-25th - **Yankee Doodle Days**, Grand Ledge. This 25th annual event features fun for the entire family with a parade, craft show, carnival, street dances, fireworks, and "Mudge's Follies" musical revue on the Second Island. (517) 627-2383.

24th - **Delta Rocks!** Family Festival, Delta Township. A free family festival which features clowns, petting zoo, pony rides, inflatable attractions, kids' make-it and take-it crafts, music, classic car show, super sling shot, face painting, concessions and more. (517) 323-8555.

JULY

10-15th - **Eaton County Fair**, Charlotte Fairgrounds. Whether you enjoy tractor and truck pulls, motor-cross races, demolition derbies or concerts by nationally renowned performers, you can find it all at the Eaton County 4-H Fair. (517) 543-4510.

10-16th - **Common Ground Festival**, Lansing. Music, food and fun can be found along the banks of the Grand River as thousands of participants are drawn to hear nationally known artists. Be sure to bring a blanket and enjoy a concert under the stars. (517) 267-1502.

31st-August 5th - **Ingham County Fair**, Mason. Celebrating 151 years, the fair offers something for everyone including hundreds of exhibits, the excitement of the grandstand events, large midway, a petting zoo, clowns and more! (517) 676-2428.

Calendar of Activities

Including on and off-campus activities!

For information on sports activities, please visit
<http://msuspartans.collegesports.com/>

APRIL 2006

22nd - **Small Animals Day**, East Lansing. MSU Farms are open for visits from thousands of children of all ages. Buses transport visitors from the commuter lot at Mt. Hope Rd. and Farm Lane to the MSU Pavilion, Horse Farm, and Poultry Farm. \$2/person, event begins at 9:00 am. Arrive by 11am to visit all of the exhibits! <http://www.canr.msu.edu/studentssenate/> (517) 355-9575.

23rd - **Race for the Place 5K Run/Walk/Wheel**, East Lansing. This April race is open to the public and features a 5k run, competitive run/walk/wheel, and kids' fun runs. The 3.1 mile course winds through the MSU campus along the Red Cedar River, and it begins and ends at the Jenison Field House. Proceeds from the event benefit MSU Safe Place. <http://www.msu.edu/~safe> (517) 355-1100.

MAY

6th - **Victorian Festival**, Grand Ledge. Participate in a weekend salute to spring and the Victorian era. (517) 627-2383.

20th - **The Michigan Parade**, Lansing. Over 200 units including specialized equestrian teams, clowns, marching bands, antique vehicles and fire trucks salute Michigan as they wind through downtown Lansing. (517) 323-2000.

20th-21st - **East Lansing Art Festival**, East Lansing. The City of East Lansing blocks off its downtown streets to host more than 200 artists from across the country for its 41st annual art festival. (517) 337-1731 x6804.

20th-21st - **Michigan State University Spring Arts & Crafts Show**, East Lansing. Three hundred exhibits showcase crafters and artists from throughout the Midwest on the arbor-like campus of MSU. (517) 355-3354.

26-28th - **Fiesta 2006**, Lansing. This annual fiesta features the best in Mexican food, traditional music, dazzling folklore, and a Mexican marketplace. (517) 394-4639.

JUNE

2nd - **The Board of Water & Light Chili Cook-off**, Lansing. More than 40 local businesses compete annually to win the hearts, palates, and votes of attendees. Competitors showcase culinary skills for a great cause at a riverside party with 1,500 gallons of chili, cold beer and margaritas and live bands. (517) 702-6730.

in music through a rich variety of songs, chants and movement activities. Classes meet weekly for five or ten weeks.

School of Music (353-5340)

<http://www.music.msu.edu>

The School of Music presents more than 300 concerts and events each year by its students, faculty, large and small ensembles, and guest artists. Performances range from opera, jazz, and Latin, to classical, chamber, and traditional music. School of Music tickets are \$8; \$6 senior citizens; and free for students and those under age 18 unless otherwise noted. Summer classes and camps are also offered. Located on West Circle Dr. in the Music Bldg.

Department of Theatre (355-6690)

<http://www.theatre.msu.edu>

The Department of Theatre sponsors several dramatic productions each year. Performances are generally on the Wharton Center Festival Stage or in Fairchild Theatre. The department features the award winning Summer Circle Theatre. These free outdoor productions (behind the auditorium) draw patrons from around the state.



Wharton Center for Performing Arts (432-2000)

<http://www.whartoncenter.com>

The Wharton Center offers a full schedule of touring Broadway shows, leading dance troupes, and famous soloists and ensembles. The facility also showcases performances by the Dept. of Theatre, School of Music, and Lansing Symphony Orchestra. Events enhance campus academic life through a variety of personal encounters with both traditional and innovative art forms. MSU students are offered discounts on tickets for series and single performances. Located on the corner of Wilson Road and Bogue Street. Wharton offers performances for children and families called the "Family Series."

Junior High Band Camp (355-7661)

Offers band rehearsals, master classes, beginning theory and music appreciation in the music building on the MSU campus.

Ages: Grades 6-9

Dates: July 15-21, 2006

Day camp 9:00 a.m. - 3:00 p.m.

Deadline: June 30, 2006

Fees: \$170

Children's Choir Camp

(355-7661)

Day camp for children provides opportunity to perform choral music, receive instruction in musicianship and movement. Culminates in a performance on the last day.

Ages: 9-14

Dates: June 18-23, 2006

Day camp 9am-12pm or 1-4pm

Deadline: May 15, 2006

Fees: \$100

.

East Lansing

Children's Film Festival

(853-0502)

<http://www.elcff.com>

Films from around the world for children of all ages. Held February 23rd, 2007 through March 1st, 2007. Also offers activities throughout the rest of the year.

.

W.K. Kellogg Manor House

(269-671-2416)

www.kbs.msu.edu/manor_house

The Kellogg Manor house is part of the MSU Kellogg Biological Station located between Battle Creek and Kalamazoo on Gull Lake at 3700 E. Gull Lake Dr., Hickory Corners, MI. The former summer home of cereal magnate W.K. Kellogg has been restored to its original grandeur. The gardens surrounding the house have been partially restored and the Manor is once again a beautiful and stately residence. The house is open for tours Memorial Day-Labor Day, Mon.-Fri. at 10am, 11am, 1:30pm, and 2:30pm. It's also open Sept.-Oct. and Feb.-May Mon.-Fri. at 1:30. Entrance fee is \$4/adult, \$3/senior and children ages 6-18. The Holiday Walk is being held Nov. 24th-Dec. 19th, Mon.-Fri. from noon-5pm. Please call for more information.

.

Woldumar Nature Center

(322-0030)

<http://www.woldumar.org>

Walking trails and nature center. Trails open dawn to dusk; nature center open Mon.-Sat. 10am-5pm. Located at 5739 Old Lansing Road, Lansing. Admission is by donation.

.

**R. E. Olds
Transportation Museum**
(372-0422)

<http://www.reoldsmuseum.org>

A collection of artifacts and documents pertaining to the auto industry and Lansing area transportation from 1883 to the present. Over 50 vehicles on display. Located at 240 Museum Drive in Lansing. Admission is \$5 for adults; \$3 for students and seniors over 65; children under 5 are free.

Riverfront Park and Trail

Located in downtown Lansing, along the Grand River. Bike trails and the Riverwalk pathway provide miles of exercise and fun.

Schuler Books and Music
(349-8840)

<http://www.schulerbooks.com>

Schuler Books and Music often offer special readings and events for children and families at our stores. Please watch our calendar for more information. Located in the Meridian Mall, 1982 Grand River Ave. in Okemos.

State Capitol Building
(373-2353)

www.milegislativecouncil.org/lcfaf.html

Step back into the Victorian era with a visit to Michigan's award-winning Capitol Building. Tours of the public areas and

the House and Senate galleries are available every half-hour. Admission is free. Located at the intersection of Capitol and Michigan Avenues, Lansing.

Sundance Riding Stables
(627-5500)

<http://www.sundanceridingstables.com>

Saddle up western style at Sundance Riding Stables. Hourly and daily horse rentals, open riding, pony riding, riding lessons, and hayrides. Also enjoy Michigans largest indoor riding arena. Located at 9250 Nixon Road, Grand Ledge.

**Turner-Dodge House &
Heritage Center**
(483-4220)

<http://parks.cityoflansingmi.com/tdodge>

This authentically restored classical revival house was the home of pioneers of the state and Capitol City. It features many events, including teas, tours, lunchtime talks, and special events. Hours are May-Oct., Wed.-Sat., 1-4pm and December. Each first Sunday of the month features Lansing's best local artists. Located at 100 E. North Street in Lansing. \$3 residents, \$4.50 non-residents, and \$1.00 for children.

Academic Programs For Children

CHAMP

(432-2129)

<http://www.msu.edu/user/gifted/>

Conducted at MSU, an 8-month search and identification process enrolls students in a two-year program which allows them to complete four years of math in two years. Courses include Algebra I, Algebra II, Geometry and Mathematical Analysis. Students who complete the series are ready for Calculus at the high school or college level.

Ages: Completed grades 7-10

Dates: Late August '06

through early May '07

Deadline: May 1, 2006

Fees: \$475 plus \$25 non-refundable registration fee

High Achievers

(432-2129)

<http://www.msu.edu/user/gifted/>

Students can take university courses with 18-22 students while in high school. Classes are: Film and Society, Introduction to Microeconomics, Introduction to Psychology, Introduction to Philosophy, and Biotechnology. Qualifications: priority placement for students with SAT-Verbal scores 530 and total SAT of

970. Comparable ACT scores will be accepted.

Ages: Completed grades 9-12 and living in Ingham, Clinton, Eaton or Shiawassee counties

Dates: June 20 - July 20, 2006 (day classes)

Deadline: March 31, 2006

Fees: \$699.75/3 credit class; \$933/4 credit class

**Mathematics, Science &
Technology Program**

(432-2129)

<http://www.msu.edu/user/gifted/>

Two week residential program for students from any state, focusing on Chaos and Fractals, Physics, Astronomy, Mechanical Engineering, Physiology, Genetics, Biotechnology, Digital Communication and Zoology. Call for qualifications.

Ages: Completed grades 7-8

Dates: July 16 - July 29, 2006

Deadline: April 28, 2006

Fees: \$1,500 residential; partial scholarships based on need

Kids' College

(244-1280)

www.inghamisd.org/schools/summer_camps.html

Ages: For grades 4-5

Dates: July 10-July 21, 2006
An interdisciplinary approach to studying science/technology and the arts. Held at MSU.

Fees: \$250

Mascot

(244-1280)

www.inghamisd.org/schools/summer_camps.html

Mathematics Augmentation Series Cultivating Optimum Teaching and Learning by improving techniques; using technology; teaming students, teachers and counselors. Held in Okemos.

Ages: For grade 6

Dates: June 26-July 14, 2006

Fees: \$225

Tech4Kids

(244-1238)

www.inghamisd.org/schools/summer_camps.html

Produce a movie, design a website, create music, learn about digital cameras, etc.! Registration begins April 1st. Held in Mason.

Ages: For entering 6-8th grades.

Dates: June 19-July 20, 2006

Fees: \$30 for each 4 day session, \$60 to attend both

Saturday School

(244-1280)

www.inghamisd.org/schools/summer_camps.html

Includes a mix of 10-12 enrichment courses designed to increase student's knowledge of the world they know.

Ages: For grades 2-8

Dates: Spring: March 25-May 6, 2006 & Fall: Oct. 22-Nov. 19, 2006

Fees: \$98

Dimensions

(244-1280)

www.inghamisd.org/schools/summer_camps.html

A program designed for students who participate in the Midwest Talent Search Project of Northwestern University study in two academic and one arts-laboratory classes. Held in Mason.

Ages: For grades 7-8

Dates: June 12-July 7, 2006

Fees: \$425

Michigan Historical Museum

(373-3559)

<http://www.michigan.gov/hal>

The Michigan Historical Museum, located in downtown Lansing, tells Michigan's story from precontact times to 1900 through permanent exhibits on its second floor. Exhibits about "Michigan in the 20th Century" fill the third floor. Special exhibits in a first floor gallery change yearly and have focused on collections and themes ranging from underwater archaeology to Civil War Flags. Located at 702 W. Kal-amazoo in Lansing.

Meridian Historic Village

(347-7300)

www.meridianhistoricalvillage.com

Has an authentic schoolhouse, the last standing toll-gate house in Michigan, summer day camps, farm house and barn, country store, Inn, tavern, school tours and girl scout programs. Open on Saturdays from 10am-2pm from May to October. Located behind Nokomis Learning Center on Marsh Road in Okemos.

Nokomis Learning Center

(349-5777)

<http://www.nokomis.org>

Native American Learning Classes. The Nokomis Learning Center offers a variety of pro-

grams and services for school classes, scout troops, and other groups. All of these programs accentuate a personal, interactive approach that allows visitors to be participants in a unique educational experience. Walk in visitors are free and always welcome, though a suggested donation of \$2.00 is preferred. Located at 5153 Marsh Rd. in Okemos.

Patriarche Park

(337-9459)

This convenient park features a large wooden play structure designed by East Lansing area children. The park also has baseball fields, picnic areas, tennis courts and basketball courts. Located at the corner of Saginaw and Alton roads in East Lansing.

Potter Park Zoo

(483-4222)

<http://www.potterparkzoo.org>

Exhibits more than 400 wonders of wildlife including rhinoceroses, red pandas, tigers, leopard and meerkats. Pony rides and picnic pavilions are available for a charge. Located at 1301 S. Pennsylvania, Lansing. Admission costs between \$2-\$6/person. Parking costs \$3/car or \$5/oversized vehicle.

Impression 5 Science Center
(485-8116)

<http://www.impression5.org/>

Explore, discover, and experience Mid-Michigan's leading hands-on/minds-on science and technology center which provides activities, demonstrations, and exhibits for children from 2 to 92! I-5 is located at 200 Museum Drive in Lansing and is open from 10am-5pm Mon.-Sat. (open until 8:00 PM Thursday evenings). Every Saturday is a Super Saturday, with changing themed activities from 11:00-4:00. Check the website for info on themes. Admission is \$5.00 for adults, \$3.50 for students and seniors. Children 3 and under are free.

Lansing Lugnuts
(485-4500)

<http://www.lansinglugnuts.com/>

Enjoy good times with good friends with Lansing's minor league baseball team - the Lansing Lugnuts. It's family fun at an affordable price featuring LAFCU fireworks, zany promotions and baseball featuring several future pro prospects. Every Sunday home game is "Meijer Kids Day" with face painting, special entertainment and the chance to run the bases following the game. Other Olds Park events include community concerts, night time movies

and MSU baseball. Located in downtown Lansing at Oldsmobile Park, 505 E. Michigan Ave. Tickets range between \$7-9.

Lake Lansing Park - North
(676-2233)

The north park offers 410 acres of natural surroundings. Come discover a variety of ecosystems, which harbor mature oak and maple woodlands, marshlands, pine plantations and transitional field areas as you traverse the more than 5 miles of hiking trails. In the winter, bring your skis (or rent some from us) and enjoy cross country skiing through a snow covered forest. Located at 6260 E. Lake Drive, Haslett.

Lake Lansing Park - South
(676-2233)

The 30 acre park includes a swimming beach, barbecue grills, concession stand, pedal boats and rowboats, and an expansive playground including a trike track. A band shell offers visitors a chance to hear various types of music while enjoying warm summer evenings. Bring your lawn chair or blanket and listen to some of the best music mid-Michigan has to offer! Located at 1621 Pike Street off of Marsh Road in Haslett.

Museums

Abrams Planetarium
(355-4672)

<http://www.pa.msu.edu/abrams/>

Rediscover the wonders of the universe at Abrams Planetarium. The sky theater features fantastic star shows produced by state-of-the-art computer graphics star projectors. The planetarium also serves as an astronomy and space science education resource center. Programs are held Friday and Saturday evenings and Sunday afternoons. A free exhibit hall is open from 8:30am -12pm and 1pm-4:30pm on weekdays. For a 24-hour recording call 332-STAR. Admission: Adults \$3.00; MSU ID or Senior Citizens \$2.50; Children ages 12 and under \$2.00.

Kresge Art Museum
(353-9834)

<http://www.artmuseum.msu.edu>

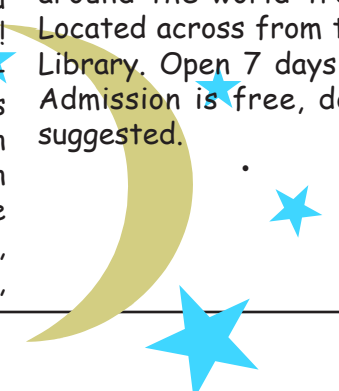
Children and families will enjoy over 5,000 years of art and culture at Kresge Art Museum! From ancient to contemporary art, the museum features Egyptian, Greek, and Roman artifacts, Western European and American art from the medieval era to the present, and works from African, Asian,

Islamic, and pre-Columbian cultures. Free audio-guides introduce kids to highlights in the museum's collection, and interactive Kids' Guides are available for special exhibitions. Located in the Kresge Art Center, at Auditorium and Physics Roads. Open 7 days a week September through May. Reduced summer hours. Closed August and some holidays. Admission is free.

MSU Museum
(355-7474)

<http://www.museum.msu.edu>

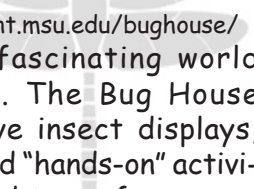
The wonders of the natural world and world cultures are yours to discover. Three floors of exciting permanent collections and changing special exhibits featuring anthropological, biological, geological, and historical displays. The museum has a hands-on resource room with activities for youths and a unique gift store featuring around-the-world treasures. Located across from the Main Library. Open 7 days a week. Admission is free, donations suggested.



Animals & Gardens

Animals

Bug House (355-4662)



<http://www.ent.msu.edu/bughouse/>
Visit the fascinating world of insects. The Bug House contains live insect displays, exhibits, and "hands-on" activities. Guided tours for groups of 30 or less are available Monday - Friday. Cost is \$30 for a one-hour program. Special hours have been arranged for those who may be interested in visiting, but do not constitute a group on a donation basis. A guide is available to answer questions. Located in room 146-147 Natural Science Building.

"Butterflies in the Garden" (355-5191 x327)

March 1st through April 15th, 2006 the indoor section of the 4H Children's Garden will be exhibiting butterflies. There is no charge. Open Mon-Fri 8:00-5:00 (call ahead) and Sat-Sun 8:00-5:00 (drop-ins welcome).

Kellogg Bird Sanctuary (269-671-2510)

http://www.kbs.msu.edu/Bird_Sanctuary/
The Kellogg Bird Sanctuary is part of the MSU Kellogg Bio-

logical Station located between Battle Creek and Kalamazoo at 12685 East C Avenue in Augusta, MI. The Sanctuary's self-guided walking trail includes native waterfowl, birds of prey, an upland game bird display, migratory birds and some exotic species. The Sanctuary is open year-round May-Oct. 9am-7pm and Nov-April 9am-5pm. Admission is \$4/adults, \$3/seniors, \$1/children (2-12 years) and children under two years are free.

MSU Farms (355-8383)

MSU is home to many animals. Call to get visitors hours:
Dairy Farm - 355-7473
Horse Farm - 355-8391
Purebred Beef Farm
355-7452
Sheep Farm - 355-7477
Swine Farm - 355-7485
Poultry Farm -355-0360.

Located on the South side of campus between Mt. Hope and Jolly Roads. See page 26 for information on the 2006 Small Animals Day.

East Lansing Hannah Community Center (333-2580)

<http://www.cityofeastlansing.com>
Located on Abbott Rd. at Burcham Dr., the center offers a wide array of recreational and fitness activities for all ages, a teen center, indoor swim pool with slides, a 500-seat auditorium, fitness center, gymnasiums, and banquet facilities. The Center is home to the East Lansing Seniors' Program which offers recreational, educational, social and fitness activities for area senior citizens.

Edru Skate-a-Rama (699-2438)

<http://www.skatarama.com>
Offers public roller skating or blading, private parties, laser tag, birthday parties, lessons, arcade, snack bar and full service ice cream shoppe. Located at 1891 N. Cedar in Holt.

Fenner Nature Center (483-4224)

<http://parks.cityoflansingmi.com/fenner/fnc.html>
Features 130 acres of natural habitat to explore. Walking trails (open 8:00-dusk, daily), nature library, nature exhibits and more. Programs for families and educational group tours are available. Located at 2020 E. Mt. Hope, Lansing. Free admission.

Funtime Adventure Parks (332-7944)

<http://www.funtimepark.com/>
Offers miniature golf, arcades, pizza, go-carts, batting cages, and more. Located at 3384 James Phillips Drive, Okemos.

Harris Nature Center (349-3866)

www.meridian.mi.us/Parks/harris_nature.html
Surrounded by forests and meadows, this center is set on the banks of the Red Cedar River. Trails are open from dawn to dusk. Inside the building, displays are accented by the Preuss Living River Exhibit and the Red Cedar River model. Programs for families are available year round. Cross country ski rentals are available during the winter months. Located at 3998 Van Atta Road, Okemos. Free admission.

Hawk Island County Park (676-2233)

This park includes a sandy beach for swimmers in the hot summer months. Concession stand, playground, pedal boats and rowboats, picnic tables and grills, picnic shelters, and asphalt path along the 30 acre lake. Sledding available in the winter months with a warming lodge and ski rentals available on the weekends. Located at 1601 E. Cavanaugh in Lansing.

Off-Campus Activities and Attractions

Burchfield Park (676-2233)

This park encompasses 540 acres and is Ingham County's largest park. Stocked fishing gives anglers a chance to hook 11-13" trout. The park holds more than 6 miles of trails which follow along the Grand River through beautiful wooded areas. Over 10 miles of mountain biking trails available. Cool off on a hot summer day by taking a swim in the natural spring fed pond, or relax on the golden sand beach. Rent a canoe or a kayak and enjoy a day on the Grand River or stay in the park and paddle around the pond in one of our pedal boats. During the winter, race your friends down our 700ft. toboggan runs, or take a ride down our two sledding hills. Located at 881 Grovenburg Road, Holt.

East Lansing Public Library (351-2420)

<http://elpl.org>

The library offers a variety of reading activities and programs for families with children of all ages. Located at 950 Abbott Rd., East Lansing.

East Lansing Family Aquatic Center

(332-4420) or (333-2580)

<http://www.cityofeastlansing.com>

Located on Abbott Rd., north of Lake Lansing Road. The East Lansing Family Aquatic Center features a zero depth entry pool, four water slides (body slide, tube slide, drop slide, youth frog slide), diving board and interactive water features along with a sand play area for the kids, sun deck and concessions area. Changing rooms and lockers available. Group reservations available.

East Lansing Bike/Hike Trails

The Northern Tier trail connects many East Lansing neighborhoods and links to Abbott Rd. Park, Harrison Meadows Park, White Memorial Park, the Family Aquatic Center and Soccer and Softball Fields. The Northern Tier trail is four miles in length. The trails host bikers, joggers, walkers, skaters and skateboarders year-round.

Kellogg Farm Dairy Center

(269-671-2507)

www.kbs.msu.edu/

[research_facilities/farm/Dairy](http://www.kbs.msu.edu/research_facilities/farm/Dairy)

The Kellogg Farm Dairy Center is part of the MSU Kellogg Biological Station located between Battle Creek and Kalamazoo near Gull Lake at 10461 N. 40th St., Hickory Corners, MI. A modern farm where visitors may observe cows being milked. The Dairy Center self-guided walking trail is open everyday from 8am to sunset. Entrance is free.

Pavilion for Agriculture and Livestock Education

(432-5566)

<http://www.pavilion.msu.edu>

How would your children like to see animals up close? MSU's Pavilion for Agriculture and Livestock sponsors numerous year-round animal shows spotlighting horses, cattle, sheep, rabbits, and dogs. These shows will help your children learn about livestock and agriculture and have fun in the process.

Gardens

W.J. Beal Botanical Garden

(355-9582)

<http://www.cpa.msu.edu/beal/>

Founded in 1873, the Beal Botanical Garden is the oldest continuously operated garden of this type in the U.S. It in-

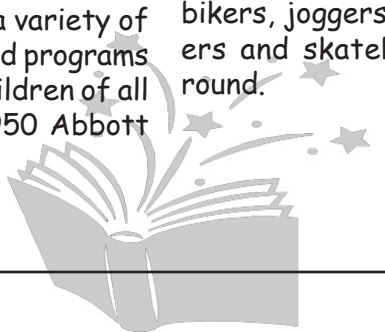
cludes over 5,000 species organized in economic, systematic, landscape and ecological groupings. The Garden also features an endangered and threatened plant collection and Michigan native wetland plants. Located west of the Main Library. Admission is free.

Horticultural Demonstration Garden

(353-3770)

<http://www.hrt.msu.edu/gardens>

Visitors can take a stroll through the colorful floral displays of the MSU Horticulture Gardens - an official All-American Trial Garden test site for annual bedding plants. They have an extensive perennial collection, with an annual display and rose collection. Located South of the Plant and Soil Sciences Building. Open April 1 - November 1, dawn to dusk. Admission is free. To schedule a guided tour or education program call 517-256-9915. To reserve the garden for a wedding or special event call 353-3770. Parking on Saturday and Sunday is free, but from 8:00am -5:30pm, Monday - Friday, a \$3.00 token purchase is required before leaving the parking lot (buy tokens at the entrance to the visitor parking lot).



4H Children's Garden

(355-5191 x327)

<http://4hgarden.msu.edu/>

Designed especially for children, and completely handicapper accessible, this delightful garden features a tree house built from twigs and limbs, a garden house, an amphitheater and themed gardens, such as pizza and Peter Rabbit. Just imagine a garden where plants, children, and imaginations grow! Located south of the Plant & Soil Sciences building. Open April 1 - November 1, dawn to dusk. Admission is free. Parking on Saturday and Sunday is free, but from 8:00am -5:30pm, Monday - Friday, a \$3.00 token purchase is required before leaving the parking lot (buy tokens at the entrance to the visitor parking lot).

MSU Herbarium

(355-4696)

<http://www.herbarium.msu.edu>

Come explore the vast diversity of the plant kingdom! An herbarium is a "library" of dried and preserved plants and the MSU Herbarium represents a worldwide scientific collection of all groups and plants, lichens, and fungi. Current holdings number over 530,000 specimens. The mission of an herbarium is to preserve and document the diversity of

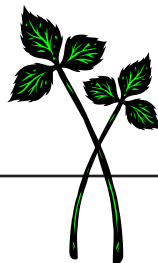
plants and the flora of Michigan. We have plants collected from Michigan dating back to 1837. So if you love things that grow, bring your whole family to enjoy the Herbarium on MSU's campus. Located in the basement of the Plant Biology Building East wing on campus. Open from 8:00am-5:00pm, Monday-Friday.

Hidden Lake Gardens

(269-431-2060)

<http://www.cpp.msu.edu/hlg/>

One of Michigan's best kept secrets. Located 2 miles West of Tipton, Michigan, on Michigan Route 50. Hidden Lake Gardens covers 755 acres of meadows and oak-hickory woodlands filled with an abundance of native flora and fauna. Specializing in botanical gardens made up of a plant conservatory, a dwarf conifer collection, a hosta garden, a perennial garden and large collections of flowers, trees and shrubs. Open 8am to dusk (April through October); 8am to 4pm (November through March). Cost is \$3 per person. Memberships are available. Guided tours available for groups with 10+ people (by reservation).



U Cue Billiards/Game Room

(355-3358)

<http://www.hfs.msu.edu/union/>

Houses eight regulation pocket billiard tables, plus video games. Located in the lower level of the Union. Air conditioned and non smoking environment. Discounted group rates are also available. Tournaments are held throughout the school year. For more information contact Imtiaz Jaffer at jafferim@msu.edu.

Sports Skills Program for Persons with Disabilities

(353-3866)

<http://edweb6.educ.msu.edu/ssp/>

Would you love to improve your level of fitness? MSU's Department of Kinesiology has developed a Sports Skills Program for children and adults with disabilities. Whether you are preparing for a competition or just want to get in shape, this program can help you by providing coaching and instruction. It's never too early or too late to be interested in achieving better health and physical well-being. \$50-100 per semester, scholarships available to those who qualify.



MSU Sports Camps

(432-0730)

<http://www.sportcamps.msu.edu/>
Camps are typically held in June and July lasting 4-5 days long. Participants reside in MSU residence halls. Rates vary. Information and registration may be found on the internet.

MSU Bike Project

<http://www.bikes.msu.edu>

Check this out for information on getting a 1-year bike lease for personal or general office use to get around campus! The Bike Project also provides limited bike repair services to the campus community. Services are provided by volunteers for small donations.

Munn Ice Arena

(353-7263 or 353-4698)

<http://www.munnicearena.com>

Munn Ice Arena has classes and public skating sessions when the varsity hockey team is not in action. Call or log on to the website for public skating times. Admission is \$4 for the general public, \$3 for MSU students, faculty, staff and anyone under 18 years of age. Skate rental is available for just \$1.

MSU offers both a freestyle team and also a synchronized skating team. The team has consistently placed in the top four at nationals for the past four years. Visit their website at www.msufigureskating.com.

Athletic Events

(355-1610)

<http://www.msuspartans.com>

Jenison Field House serves as the Athletic Ticket Office for all Varsity sporting events. Call to get the latest schedule on your favorite sport during normal business hours. You may call the "time check phone line" to confirm times of variety sports. (432-TIME)



MSU Sailing Center

(339-8269)

<http://www.msusailing.com>

Experience the exciting world of Sailing at the MSU Sailing Center on Lake Lansing. "Learn to Sail" classes for adults and youths 12 and over are available June through September. Private lessons are also available. If you already know how to sail, we offer weekly, monthly, and seasonal memberships that include free use of our various fleet boats. The MSU Sailing Center is open to the public. Dock at our website or call the Sailing Center for more information.



Spartan Lanes

Bowling Center

(355-3357)

<http://www.hfs.msu.edu/union/>

Located in the lower level of the Union, this center features 16 lanes for open play, classes, leagues, and private parties. The center is open to the public. Lane fees are reasonable and shoe rentals are available. Air conditioned and non-smoking environment. Birthday party packages are also available. You may call in advance to reserve the lanes. Discounted group rates are available. To join the leagues or to make a reservation, contact Imtiaz Jaffer at jafferim@msu.edu.

Campus Attractions

Alumni Memorial Chapel

(355-0155)

<http://www.msuunion.com>

Nestled within the rolling, park-like lawns sloping gently down to the Red Cedar River stands the picturesque MSU Alumni Memorial Chapel. The non-denominational chapel accommodates all faiths. Alumni travel from around the world to celebrate weddings, baptisms and other ceremonies there. Open to the public Tuesday-Friday, unless scheduled.

Beaumont Tower

(353-5340)

<http://www.msu.edu/user/carillon/>

The Beaumont Tower marks the site of Old College Hall, the first building in America erected for instruction in scientific agriculture. A gift from John W. Beaumont (class of 1882), the tower was dedicated in 1929 and renovated in 1996, making possible weekly carillon concerts throughout the summer. Located on West Circle Drive, near the MSU Museum.

MSU Dairy Store

(355-8466)

<http://www.dairystore.msu.edu>

When you visit the Dairy Store, we want to see you leaving with a smile on your face. We are dedicated to making your visit enjoyable and serving our delectable ice cream and other soda fountain favorites. During your visit, we encourage you to visit the observation deck to see the processing facilities. Located in the South wing of Anthony Hall on Farm Lane. Observe a multimedia presentation on cheese and ice cream production. Tuesdays, Wednesdays, and Thursdays offer the best opportunities for catching our process crew making some of our products, including our award winning cheeses! Located at 1140 S. Anthony Hall.



Nature Trails

The Sandford natural area is located just off Bogue Street, near Shaw Lane. Baker Woodlot is located between Bogue Street and Farm Lane on Service Road. Wildflowers, birds, and a sense of peace and quiet can be found in these hardwood forests. Open anytime.

Sports & Activities

Canoe Rental

Rentals: (353-2005)

www.hfs.msu.edu/concessions/canoe.html

Rent a canoe and cruise up the Red Cedar River. The MSU Canoe Livery Service is located Northwest of Farm Lane bridge between Bessey Hall and the Red Cedar River. It is open Friday, Saturday and Sunday from 12:00pm-7:00pm (starting Memorial Day Weekend and going through Labor Day weekend). \$8.00/hr. Conditions permitting. Group reservations or special arrangements are welcome.

Forest H. Akers

Golf Courses

(355-1635)

<http://www.golf.msu.edu/>

Come and tune up your golf game. Hit a bucket of balls on our award-winning driving range. Lessons and clinics are available for all ages. Junior golf clinics are available for children aged 4-18. Costs range from \$0-\$179 for the junior clinics. There are also weekly junior and family golf leagues offered. Forest Akers is a public golf facility, so all are invited to come and play!

Breslin Student

Events Center

(432-5000)

<http://www.breslincenter.com>

This state-of-the-art facility is the home of our championship Spartan Basketball teams. This multi-purpose arena also hosts concerts, ice shows, circuses, conventions, sporting events, banquets and trade shows. Private box suite rentals are available.

MSU Intramural Sports

Family Programs

Spouses and families of students, faculty, and staff may use intramural facilities in a variety of ways by presenting a University spouse identification card. Student, faculty, and staff spouse ID cards are available at the Administration Building. Dependent children may participate with parents on designated courts throughout the year at either IM West or IM Circle only. Families are also invited to use indoor and outdoor pools during family recreation times.



Intramural Sports Facilities

▪ Intramural Circle

(355-4710)

Volleyball, basketball, and indoor pool. Location: West Circle Drive

▪ Intramural East

(353-3136)

Exercise fitness room, volleyball, basketball, racquetball & squash, indoor running track, aerobics. Location: Shaw Lane across from McDonel Hall

▪ Intramural West

(355-5250)

Fitness room, racquetball, squash, volleyball, tennis, badminton, basketball, indoor and outdoor pool. Location: Corner of Demonstration Hall and Chestnut Road

NOTE: The IM department does not provide child care. Parents or guardians are expected to stay with their children and may only use those facilities during family hours.

Swimming Classes

(355-5250)

Swimming classes are offered to children ages 3-10. Five skill levels are taught during each class time. Enrollment is limited to maintain a ratio of five students per instructor. There is an Introduction to Competitive Swimming class that is designed for children

who can; swim four lengths each of the front crawl with rhythmic breathing, the back crawl, have general knowledge of the breaststroke with the whip kick and butterfly and are interested in a stroke technique including the basic skills needed for competitive swimming. There is a nominal fee and sessions are open to the general public. For MSU students with children who live in University Housing, there are a limited number of Milton E. and Kathleen Muelder scholarships available to help cover the cost of enrollment.

MSU Tennis

(355-2209)

<http://msutennis.msu.edu/>

Eight indoor courts, ball machine rental, classes, clinics, lessons, pro shop, racquet repair and more are available! Newly remodeled lobby and lockerroom! Located at 3571 E. Mt. Hope Rd.

Indoor court cost is \$13 for MSU students and \$20 for Faculty/Staff (ID required).

20 outdoor lighted courts are also available south of the Clara Bell Smith Academic Center on Wilson Rd. There is no charge to use the outdoor courts.

