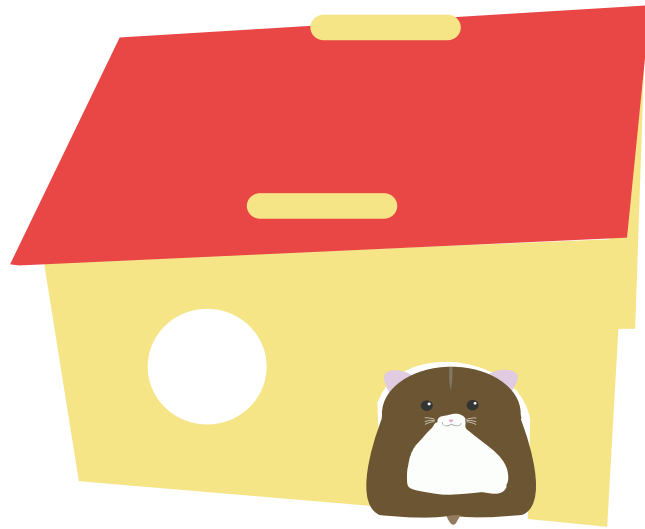
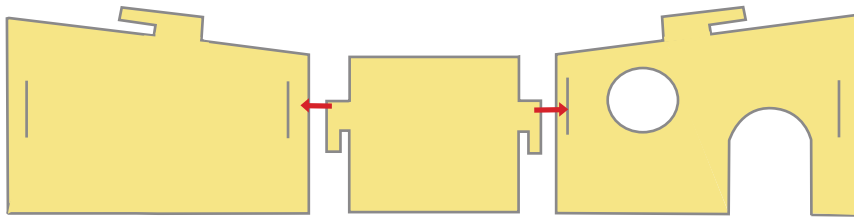


PAPER HAMMIE HOUSE



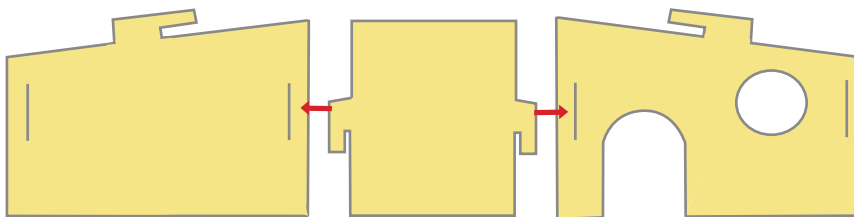
STEP 1

Slot side 1 into the smaller side of the front and back pieces



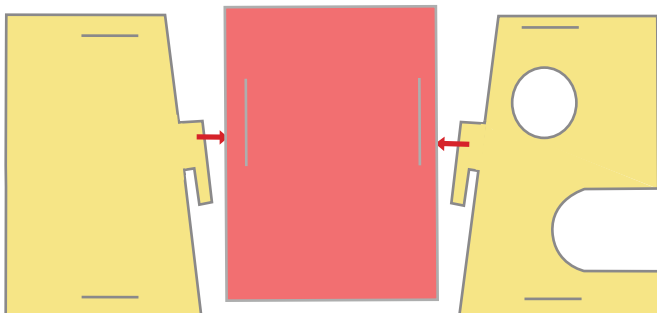
STEP 2

Slot side 2 into the larger side of the front and back pieces

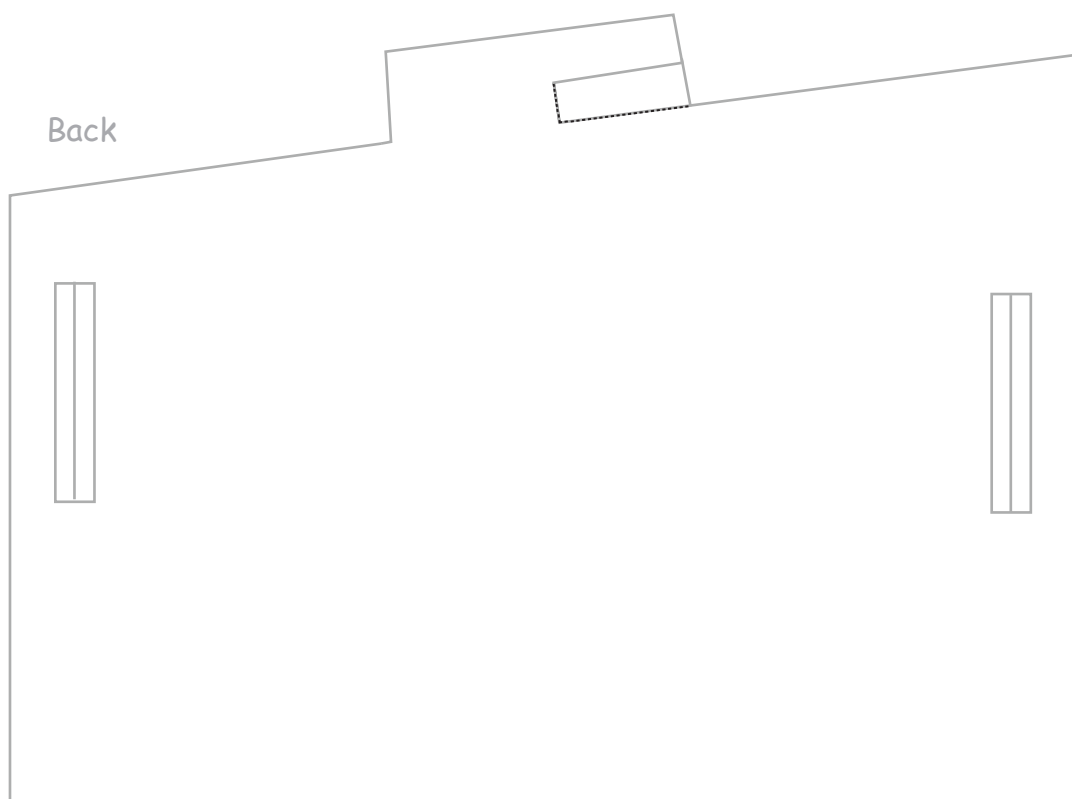
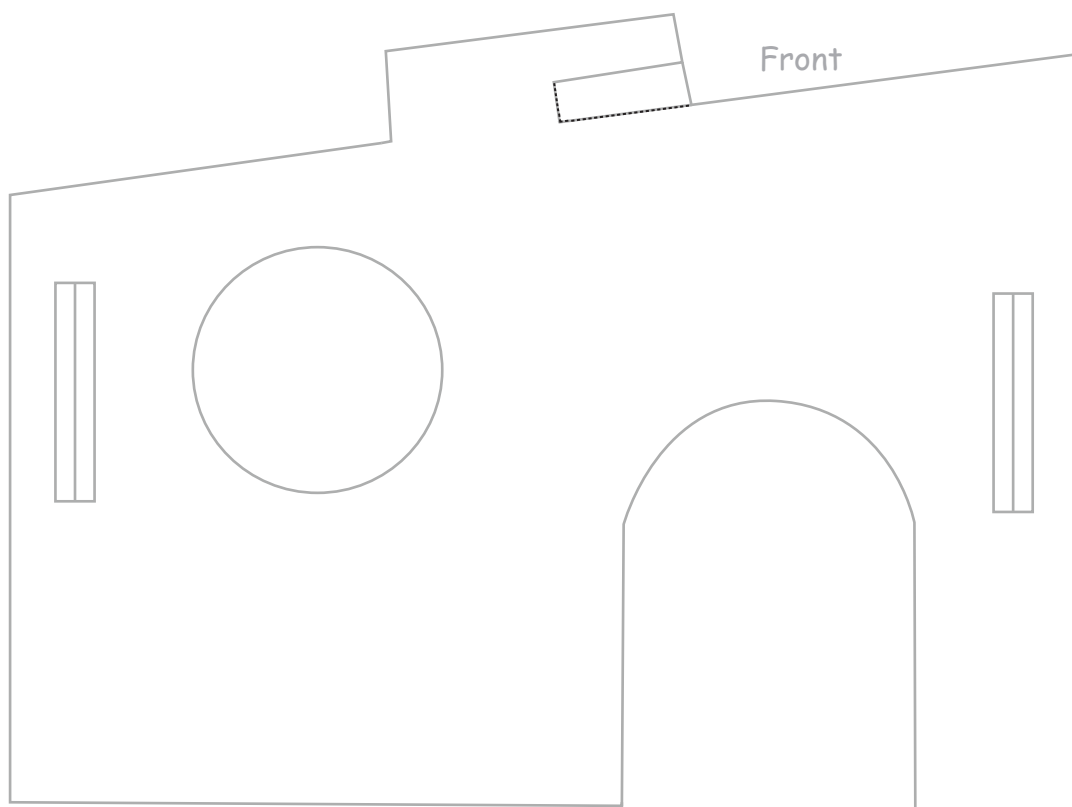


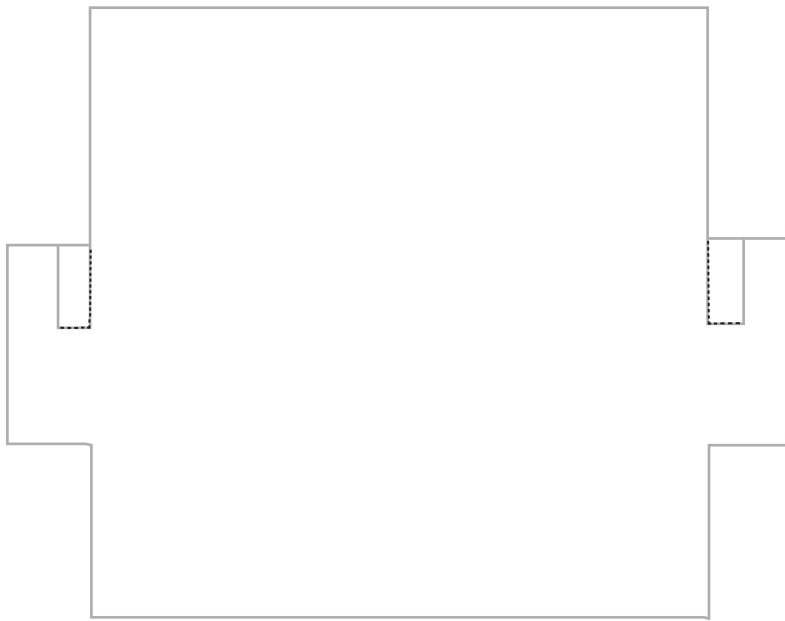
STEP 2

Slot the roof into the top of the house

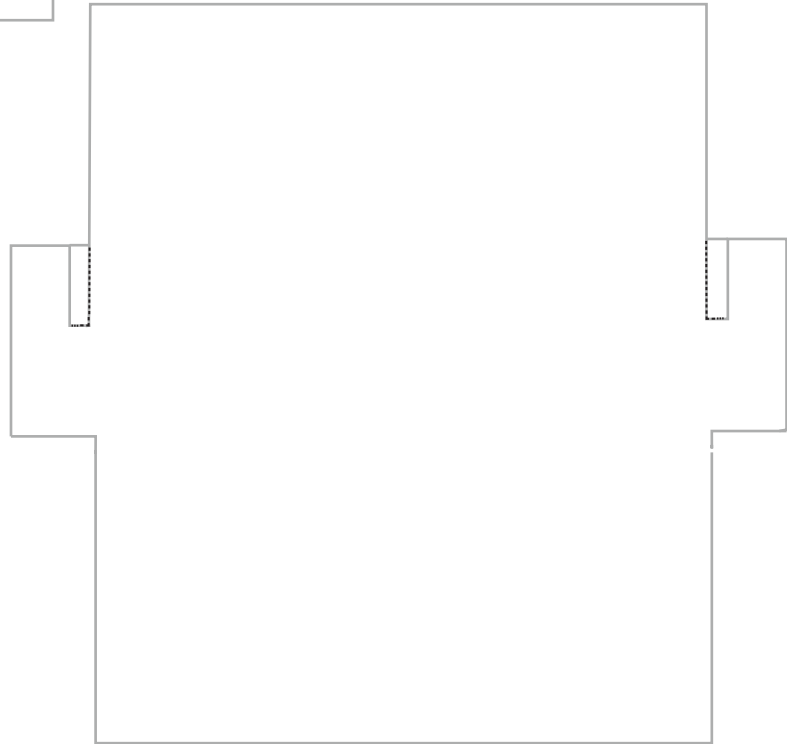


Cut slot gap depending on paper thickness





Side 1



Side 2

Cut slot gap depending on paper thickness

Roof

