

POLYURETHANE USED WITH ALL CASTINGS.

Hanovale
Model
Castings

PO Box 32
Wavell Heights Nth.
Qld. 4012.

=====

PRODUCER OF AUSTRALIAN MODEL RAILWAY KITS and ACCESSORIES.

=====

48 Class Dress Up Kit
Mk III & IV

Contents:

2 x R/H fuel tank side

2 x L/H fuel tank side

1 x Battery box

2 x Air tank

(Note: Not included 2 x 5 chime horns MK IV)

Tools required:

1 piece fine wet & dry sandpaper

1 small flat file

1 sharp knife or scalpel

Zap A Gap glue or similar

1 pr tweezers or small flat edge pliers

How to assemble:

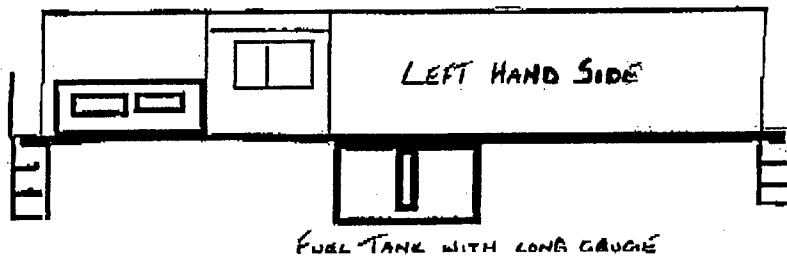
Firstly examine parts and check off against contents list.

With a sharp knife cut off any excess flash then lay out parts on wet & dry sandpaper. Gently clean off any visible flash. (Be sure to do this on a flat surface)

Finish up with flat file. Next wash all the parts in warm soapy water to remove any mould release, dust or grease then rinse in clean water and place on a paper towel to dry.

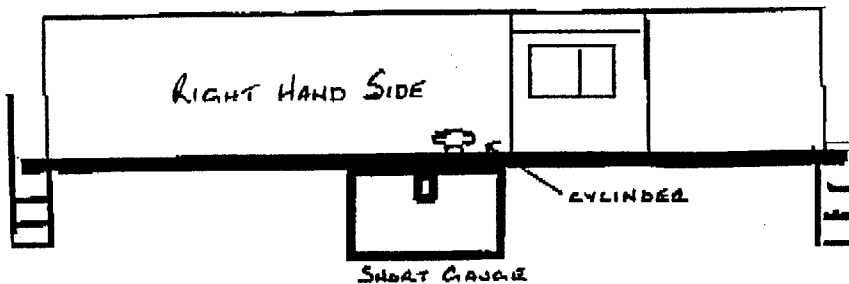
When you are ready to begin assembly position the loco so that the short hood is to your left.

FIG 1.



Pick out the fuel tank side with the long fuel gauge. Place a drop of glue on the back and centrally fit to the brass fuel tank block (tapered edge to bottom). Now turn the loco over and do the same to this side. While the loco is on this side fit the cylinder to the footplate of the loco immediately behind the cab.

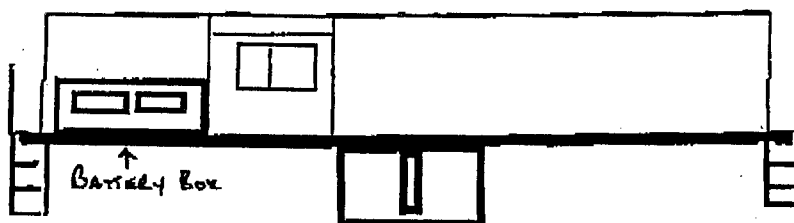
FIG 2.



48 CLASS SERIES MK 1 & 2 DO NOT HAVE BATTERY BOXES ATTACHED TO THE NOSE OF THE LOCO

You can now turn the loco back over and fit the battery box. This goes on the footplate between the step and hard up against the cab.

FIG. 3



The modifications can now be painted in the livery of your loco. Fuel Tank sides were Black or Grey (48165 BICENTENIAL) For best results consult reference books and/or videos containing the 48 CLASS.

HAPPY MODELLING.