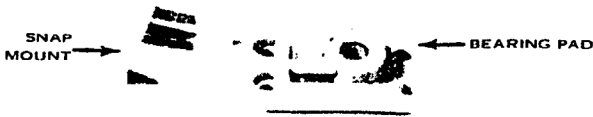
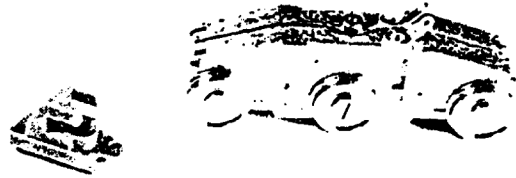


PUT TWO MOTORS IN YOUR DIESEL
WITH OUR 6 WHEEL SELF CONTAINED POWER TRUCK

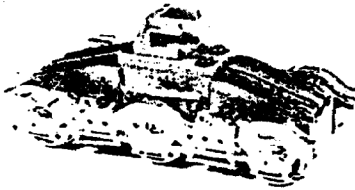
Our Miniature Drive System #3 was designed specifically for our SD EMD-10 series diesel project. These six wheel under the floor units allow the modeler the freedom of adding sound, carrier system, extra weights or interior details. With very little frame modification these units can be adapted to existing Athearn units or older brass imports. No extra wiring is needed as these are completely self contained. Electrical pick-up is totally internal. Supplied tabs that mount on top of the truck body provide you with electrical connections for headlights or other electrical use.



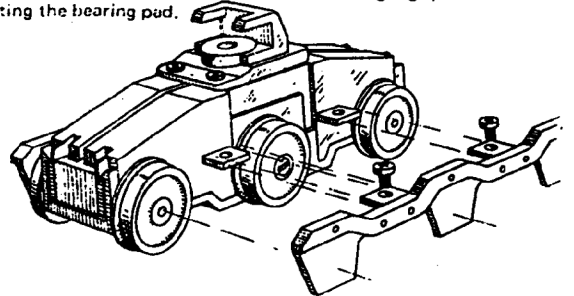
Basic plastic snap mount and bearing pad to be used on the Athearn diesels.



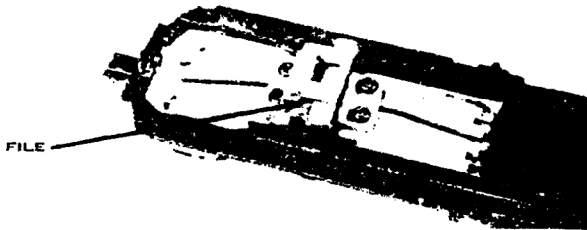
Shown here are the snap mount has been slipped into position on the bearing pad. Also shown are two electrical mounting lugs prior to screw mounting the bearing pad.



Prior to sideframe assembly and mounting on the diesel frame secure the bearing pad to the top of the power truck with the supplied screws.



Assemble and mount the sideframes on your power trucks.



When mounting on an Athearn frame it is necessary to file down the top of the frame mounting bolster for proper fit. Remove the snap mount from the top of the power truck, place power truck beneath the frame so that the dimple on the frame is inserted into the top of the power-truck. Slip the snap mount back into position. Enough of the bolster should be filed from the unit so that it will swing freely.



The long screw and washers provided will generally be used when adapting these units to brass imports.

4 versions of the MDS #3 are available:

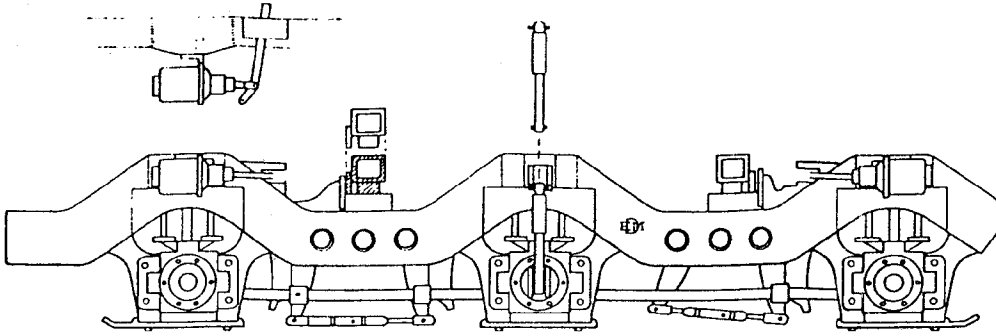
- 39096 Flexicoil 3 axle power unit without sideframes
- 39097 Flexicoil 3 axle power units with plastic sideframes, and brake cylinders.
- 39098 HT-C 3 axle power unit without sideframes.
- 39099 HT-C 3 axle power unit with plastic sideframes, slack adjuster, brake cylinder and shock absorbers

These sideframes are also available:

- 39094 EMD Flexicoil 6 wheel, 3 axle truck side-frames with brake cylinder Brass, 4 to a package.
- 39000 EMD SD 2nd generation HT-C 6 wheel, 3 axle truck sideframes with slack adjuster, brake cylinder and shock absorbers. Brass, 4 to a package.

PRECISION SCALE CO., INC.
3961 Highway 93 North
STEVENSVILLE, MONTANA 59870
(406) 777-5071

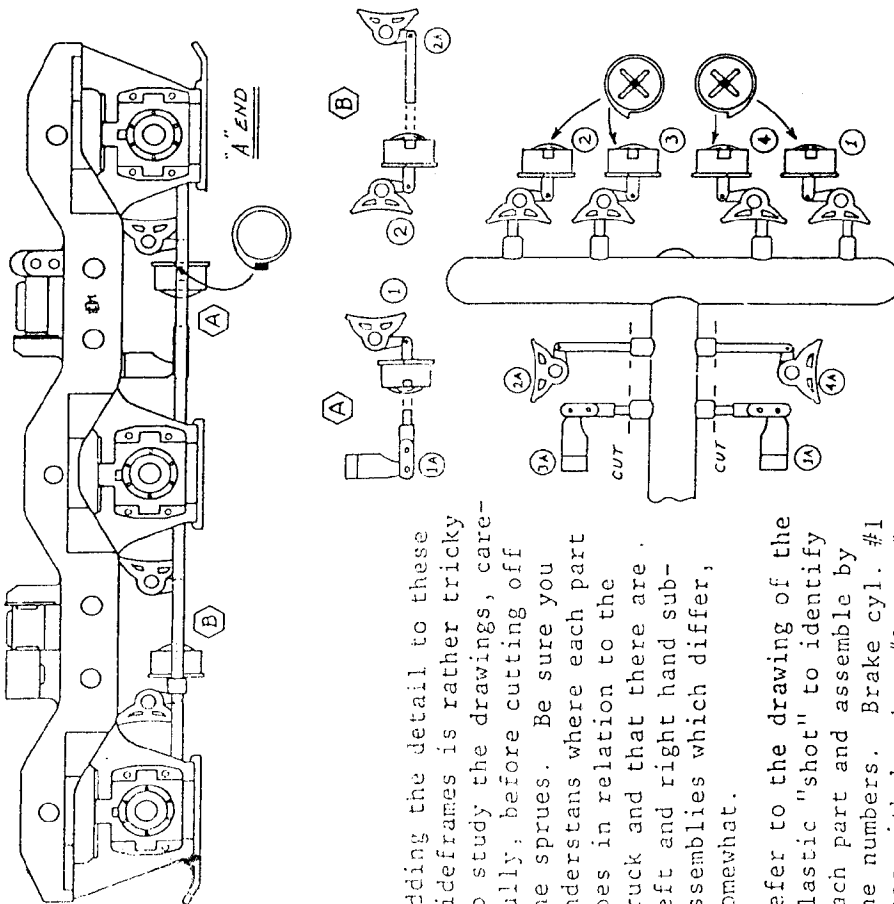
ASSEMBLY INSTRUCTIONS FOR
#39001 EMD HT-C 6 WHEEL DIESEL TRUCKS



Install brake cylinders, shock struts, etc., as shown in the drawing, then assemble trucks in the usual way. Note that the sideframes are NOT reversible - there is a left and right sideframe! The "long" end of the truck goes toward the center of the engine in each case.

Use #39001 plastic HT-C type sideframes with MDS #39098.

#39095 END FLEXICOIL 6 WHEEL DIESEL TRUCK



Adding the detail to these sideframes is rather tricky so study the drawings, carefully, before cutting off the sprues. Be sure you understand where each part goes in relation to the truck and that there are left and right hand sub-assemblies which differ, somewhat.

Refer to the drawing of the plastic "shot" to identify each part and assemble by the numbers. Brake cyl. #1 goes with bracket #1a, #2 goes with #2a, and so on.

Just match up the numbers and everything will come out right! Note the end view of the cylinders shows a small protruding "fin" which rests on the horizontal "bar" on the frame. This may look like "flash" but it isn't - so don't remove it!

Note, also, these frames are not reversible! The "A" end must go at the same end of the truck on both sides. Also, the "A" end points toward the rear of the engine on BOTH trucks!

Use #39095 plastic flexicoil type sideframes with MDS #39096.