

1.

4

T
A 5 5
B 3 3 3 3 2 5 3

T
A 5 5 7 5 4 5 5 5 5 4 7 5 7 7 9 7 5 7 5 7
B H P P H P P

T
A 3 3 5 3 2 3 3 3 3 2 5 3 5 5 7 5 3 5 3 5
B H P P H P P

2.

accel.

Faster ♩ = 96

T
A 5 7 9 9 7 7 5 7 5 7
B 3 5 7 7 9 7 5 7 3 5

T
A 7 7 9 7 5 7 5 7 9 9 11 9 7 9 5 7
B H P P H P P

T
A 3 5 7 7 9 7 5 7 3 5
B H P P H P P

8

T
A
B

T
A
B

H P P H P P

T
A
B

H P P H P P

10

1. 2.

T
A
B

T
A
B

H P P H P P

T
A
B

H P P H P P

Faster ♩ = 106

12

T
A
B

Detailed description: This system contains measures 12 and 13. The guitar part (top staff) features a complex rhythmic pattern with eighth notes and sixteenth notes, including some triplets. The bass part (middle staff) consists of a steady eighth-note bass line. The drum part (bottom staff) is a simple eighth-note pattern. The key signature has one sharp (F#).

B Verse



14

T
A
B

Detailed description: This system contains measures 14 and 15. The guitar part (top staff) continues the complex rhythmic pattern from the previous system. The bass part (middle staff) remains a steady eighth-note bass line. The drum part (bottom staff) is a simple eighth-note pattern. The key signature has one sharp (F#).

16

T
A
B

Detailed description: This system contains measures 16 and 17. The guitar part (top staff) continues the complex rhythmic pattern. The bass part (middle staff) remains a steady eighth-note bass line. The drum part (bottom staff) is a simple eighth-note pattern. The key signature has one sharp (F#).

18

T
A
B

Detailed description: This system contains measures 18 and 19. The guitar part (top staff) continues the complex rhythmic pattern. The bass part (middle staff) remains a steady eighth-note bass line. The drum part (bottom staff) is a simple eighth-note pattern. The key signature has one sharp (F#).

20

T
A
B

Detailed description: This system contains measures 20 and 21. The guitar part (top staff) continues the complex rhythmic pattern. The bass part (middle staff) remains a steady eighth-note bass line. The drum part (bottom staff) is a simple eighth-note pattern. The key signature has one sharp (F#).

70

T
A
B

T
A
B

72

Gtr IV

T
A
B

Gtr II

T
A
B

Gtr III

T
A
B

87

T
A
B

T
A
B

T
A
B

90

T
A
B

T
A
B

T
A
B

93

T
A
B

T
A
B

T
A
B

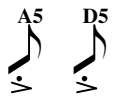
96

T
A
B

T
A
B

T
A
B

Gtr I



99

The musical score for guitar I consists of three systems. The first system features a melodic line in treble clef with a key signature of one sharp (F#) and a 3/4 time signature. The melody is composed of eighth and quarter notes. Below the melody are two bass lines, labeled T, A, and B, with corresponding tablature. The second system continues the melodic line and includes a 2/4 time signature change. The third system concludes the melodic line and includes a 3/4 time signature change. The tablature for the bass lines uses numbers 5 and 3 to indicate fret positions.

[H] Riff 4

Slower ♩ = 80

102

Gtr I

T	0					0					
A	0					0					
B	0					0					

Gtr II

T													
A													
B		7	9	10	7	9	10	7		7	9	10	7

Gtr III

T																
A																
B		8	10	12	8	10	12	8		8	10	12	8	10	12	8

104

Gtr I

T	0					0					
A	0					0					
B	0					0					

Gtr II

T													
A													
B		7	9	10	7	9	10	7		7	9	10	7

Gtr III

T																
A																
B		8	10	12	8	10	12	8		8	10	12	8	10	12	8

I Guitar Solo 1

Faster ♩ = 192

106

Gtr V
Full

17 14 16 17 14 17 14 17 15 14 17 15 14 15 14 12 14 12 14 13 12 14 13 14 13 11 13 14 13 11 13

(13) (7)

H P P H P P H P P sl. sl.

Gtr I p.M.-| p.M.-| p.M.-| p.M.-| p.M.-| p.M.-| p.M.

T A B

4 2 2 2 2 4 2 2 2 4 2 2 2 4 2 2 2 4 2 2 4 2 2 4 2 2 4 4 2 2 5 5 4 2

110

10 12 9 10 9 11 9 10 12 10 9 10 9 12 10 9 11 9 12 11

sl. P HP

4 1/2

p.M.-| p.M.-| p.M.-| p.M.-| p.M.-| p.M.-| p.M.

T A B

4 2 2 2 2 4 2 2 2 4 2 2 2 4 2 2 4 2 2 4 4 2 2 5 5 4 2

114

T 9 10 12 9 10 9 | 10 9 10 12 9 10 | 17 | 17

A

B

sl.

1 1/4

Full

P.M.-| P.M.-| P.M.-| P.M.-| P.M.-| P.M.-| P.M.

T

A

B 4 2 2 2 2 2 2 2 | 2 2 2 2 3 3 2 0 | 2 2 2 2 2 2 2 2 | 4 4 2 2 5 5 4 2

118

T 17 17 17 | 16 17 | 19 16 17 19 | 19 19 17 16 | 17 16 | 14

A

B 4 2 2 2 2 2 2 2 | 2 2 2 2 3 3 2 0 | 2 2 2 2 2 2 2 2 | 4 4 2 2 5 5 4 2

Full

Full

Full

Gtrs II, III

sl.

P.M.-| P.M.-| P.M.-| P.M.-| P.M.-| P.M.-| P.M.

T

A

B 4 2 2 2 2 2 2 2 | 2 2 2 2 3 3 2 0 | 2 2 2 2 2 2 2 2 | 4 4 2 2 5 5 4 4

J Riff 5

122

T 14 12 10 | 12 | (12) | 12 14

A

B

P P

P.M.-| P.M.-| P.M.-| P.M.

T

A

B 4 3 4 5 3 3 5 3 3 | 5 3 3 5 3 4

P

1. , 2. , 3. | 4.

124

T 14 12 10 12 10 12 14 14

A

B P P H H P P H H

T 4 3 4 3 3 4 4

A

B P P H P P H

K Guitar Solo 2

126

Gtr V

T 9 14 9 14 9 14 9 14 10 14 10 14 10 14 10 14 7 14 7 14 7 14 7 14 9 14 9 14 9 14 9 14

A

B TP

T P.M.-----| P.M.-----| P.M.-----| P.M.-----|

T

A

B 4 2 2 2 4 2 2 4 2 2 2 4 2 2 2 2 3 3 2 0

128

T 5 14 5 14 7 14 7 14 4 14 4 14 5 14 5 4 5 4 2 14 0 2

A

B TP TP TP TP TP TP TP TP H P sl. P

T P.M.-----| P.M.-----| P.M.

T

A

B 4 2 2 2 4 2 2 4 2 2 4 4 2 2 5 5 4 4

130

T
A
B

H

P.M.-| P.M.-| P.M.-| P.M.-| P.M.-| P.M.-| P.M.

T
A
B

4 2 2 2 4 2 2 2 4 2 2 4 2 2 2 2 3 3 2 0 4 2 2 2 4 2 2 4 2 4 4 2 2 5 5 4 4

L Riff 6 Half time feel



End half time feel

(2nd time on D.S.S.) To Dbl. Coda

134

Gtrs I, V

T
A
B

6 6 6 7 6 7 4 (4) 4 6 7 4 7 6 4 6 6 6 7 6 7 4 (4) 4 6 7 4 4 7 6

M Guitar Solo 3

138

Gtr V

3 NH

T
A
B

2 4 4 (4) (2) [12] [12] (12) (12) 14 (10) 14 (10)

sl.

Gtr P.M.-| P.M.-| P.M.-| P.M.-| P.M.-| P.M.-| P.M.

T
A
B

6 4 4 4 6 4 4 4 6 4 4 4 4 4 5 5 4 2 6 6 6 6 6 4 4 4 4 2 2 5 5 4 2

142

Full P.M. P.M. P.M. Full

T	12	12	13	12	11	9	12	11	9	11	12	9	12	9	9	11	9	9	11	11	11	0-21
A																						
B																						

sl.

P.M. P.M. P.M. P.M. P.M. P.M. P.M.

T																						
A	6	4	4	4	6	4	4	4	6	4	4	4	6	4	4	4	6	4	4	4	4	4
B	4	4	4	4	4	4	4	4	4	4	4	4	4	4	4	4	4	4	4	4	4	4

4 4 2 2 5 5 4 2

146

(2+) 18 15 17 18 15+12 15 12 14+12 12 9 12 9 0 9 12 9 12 9 12 9 12 9

P P sl. P sl.

P.M. P.M. P.M. P.M. P.M. P.M. P.M.

T																						
A	6	4	4	4	6	4	4	4	6	4	4	4	6	4	4	4	6	4	4	4	4	4
B	4	4	4	4	4	4	4	4	4	4	4	4	4	4	4	4	4	4	4	4	4	4

149

H H P P H H P P H H P P

P.M. P.M. P.M.

T																						
A																						
B	4	4	2	2	5	5	4	2	6	4	4	4	6	4	4	4	6	4	4	4	4	4

D.S.S. al Dbl. Coda

151

T 9 12 9 12 9

A 11 9 10 11 11 9 10

B 9 10 11 10

H P H P

P.M. P.M.--- P.M.--- P.M.--- P.M.

T

A 4 6 4 4 5 5 4 2 6 4 4 6 4 4 6 4 4

B 4 2 2 5 5 4 2

Guitar Solo 4

154

Gtr V

Full Full Full Full Full

A.H. 1/2 A.H.

T 14 (14) 14 (14) (14) 14 (14) 14 (14) 14

A 6 5 7 5 6 6

B 6 5 7 5 6 6

F# C#

Gtr P.M.- P.M.- P.M.---- P.M.- P.M.- P.M.

T

A 6 6 6 6 6 6

B 4 2 2 5 5 4 2

158

T
A
B

HP

P.M.-| P.M.-| P.M.-| P.M.-| P.M.-| P.M.-| P.M.

Full

P Riff 7

162

Gtr I

166

170

Q Riff 8

174

Gtrs II, III

T	12	9	10	(10) 12	9	10	12	9	10	(10) 12	9	10
A												
B												

Gtr I

T												
A												
B	7	9	10	(10) 7	9	10	7	9	10	(10) 7	9	10

178

Gtr II

T	12	9	10	(10)12	9	9	9 11	(11)	:	(11)	7 7 7
A											
B											

H

Gtr III

T	12	9	10	(10)12	9	9	9 11	(11)	:	(11)	4 4 4
A											
B											

H

Gtr I

T												
A												
B	7	9	10	(10) 7	7	7	7 9	(9)	:	(9)		

H

R Riff 9

183

Gtr II

T 7 9 10 7 9 10 7 9 9 7 7 9 6 7 9 6 9 7 7 7 7 9 10 7 9 10 7 9

A

B (9)

Gtr III

T 4 5 2 4 5 2 3 5 2 3 4 2 2 4 1 2 1 4 4 4 4 5 2 4 2 5 3 5

A (1)

B

188

1. 2.

T 5 7 5 7 6 5 5 5 7 7 7 7 7 7

A (7) (7)

B

P

T 2 2 3 2 0 2 2 2 2 2 4 4 4 2

A (2) (2)

B

H P P

S Outro

193

Gtr I

T
A
B

Gtr II

T
A
B

Gtr III

T
A
B

1.

197

Gtr I

T
A
B

Gtr II

T
A
B

Gtr III

T
A
B

