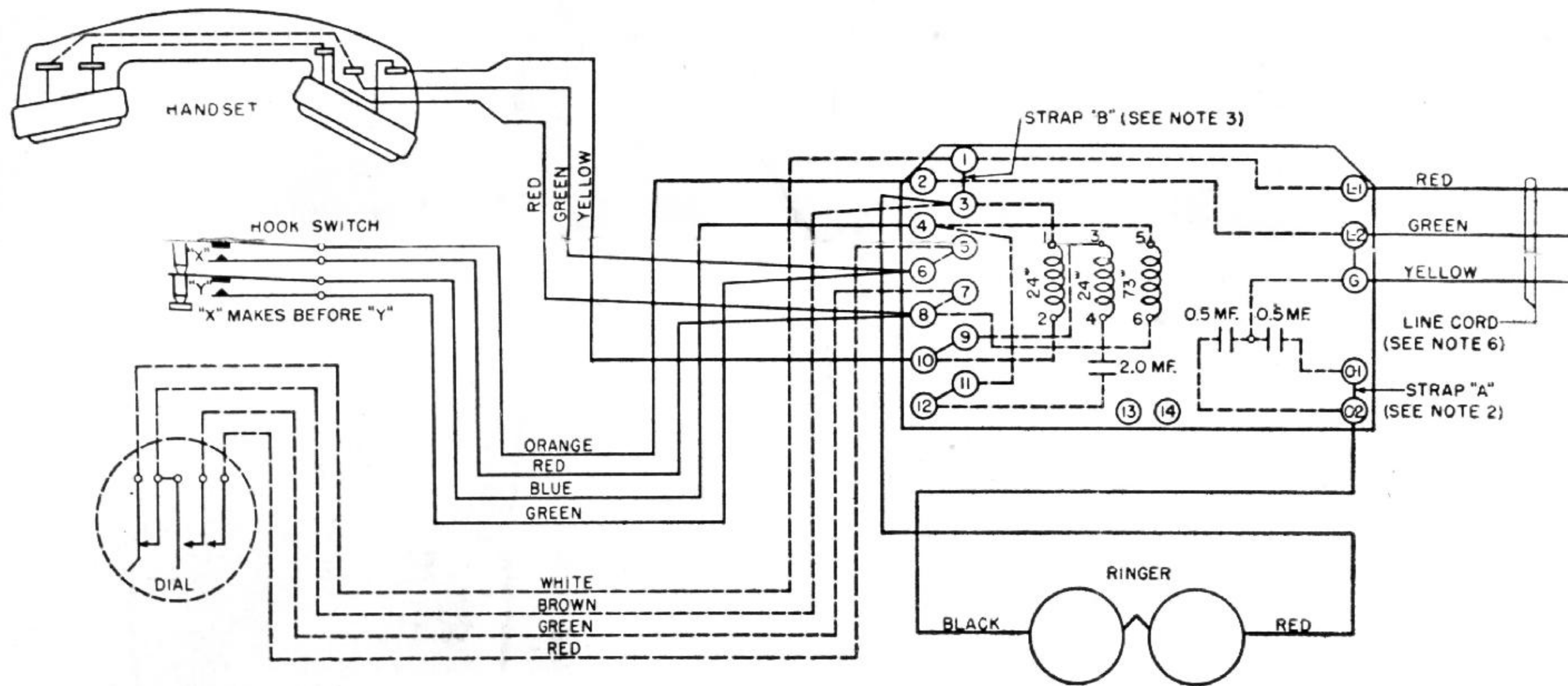


WIRING AND CONNECTIONS FOR BRIDGED RINGING

1243 AND 1250 TELEPHONE SETS

RINGER CODES A,S E,F,G,H,N K,L,M,P,R



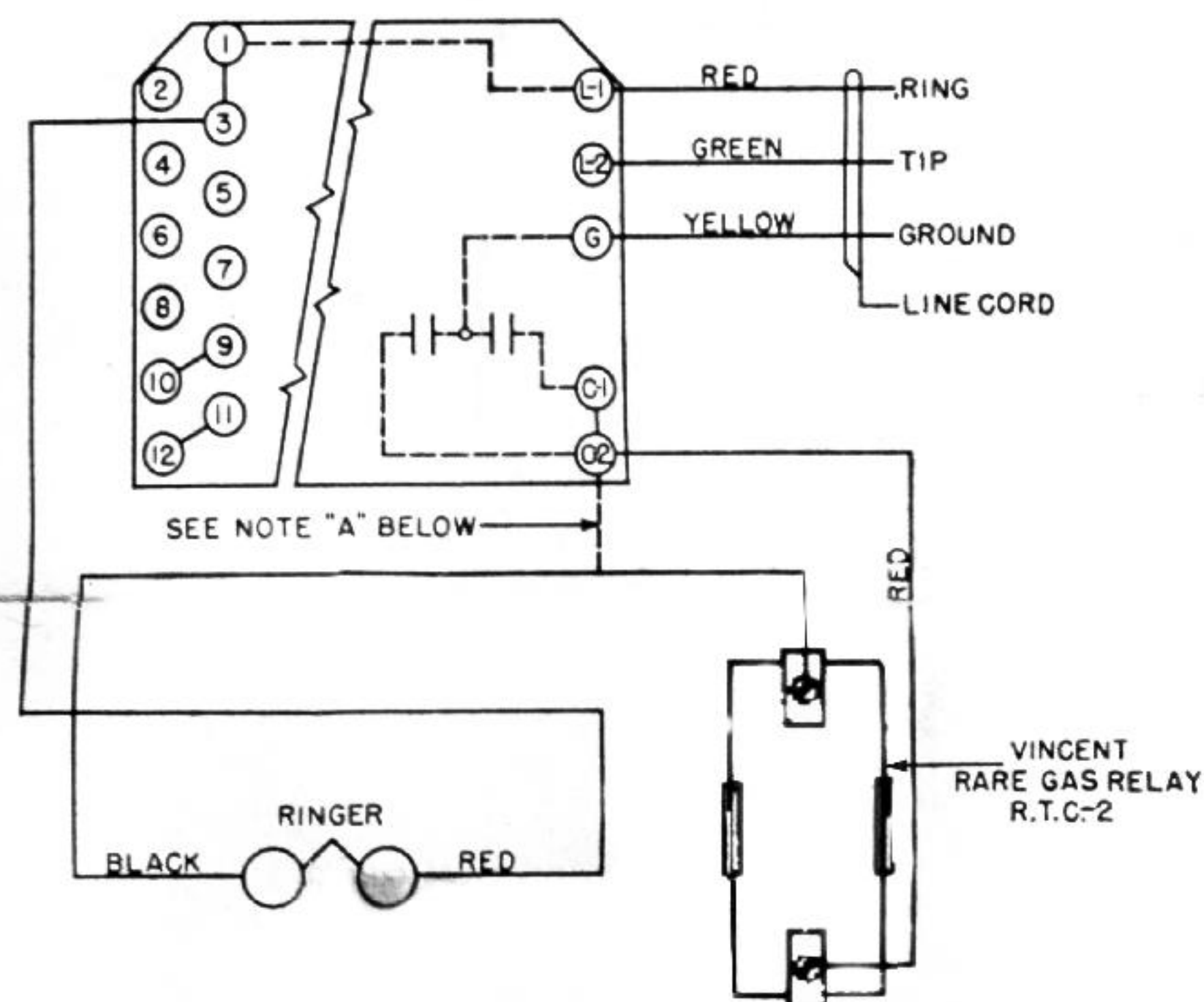
NOTES

1. IN BRIDGED RINGING, WHERE IT IS NECESSARY TO PREVENT TAPPING OF GONGS ON NO. 61 TYPE RINGERS WHILE DIALING, POSITIVE BATTERY SHOULD BE CONNECTED TO L-2 AND BIAS SPRING TENSION ADJUSTED AS REQUIRED.
2. WHEN NO. 61-S RINGER IS USED, REMOVE STRAP "A"
3. TO CONVERT FROM MANUAL TO DIAL TYPE, REMOVE STRAP "B" AND WIRE DIAL CABLE AS SHOWN BY DOTTED LINES. IF A DIAL WITHOUT CABLE IS USED, ORDER ONE 35801 OR 35861 (W) CABLE FROM STROMBERG CARLSON COMPANY
4. 13 AND 14 ARE PROVIDED AS SPARE TERMINALS FOR WIRING PLANS, RINGER CUT-OFF AND OTHER SPECIAL VARIATIONS REQUIRING THEM.
5. IN THE 1243 TA AND 1250 TA TELEPHONE SETS, THE EXTREME LOW AND HIGH SETTING OF THE BIAS SPRING TENSION, AT WHICH THE RINGER WILL ALWAYS START, SHOULD BE DETERMINED BY TEST AND THE FINAL SETTING SHOULD BE MIDWAY BETWEEN THESE TWO EXTREMES.
6. YELLOW CONDUCTOR IS NOT TO BE GROUNDED IN BRIDGED RINGING. NO LINE CORD IS FURNISHED IN 1250 TELEPHONES.

DIVIDED CIRCUIT RINGING

LINE, RINGER AND VINCENT RARE GAS RELAY CONNECTIONS

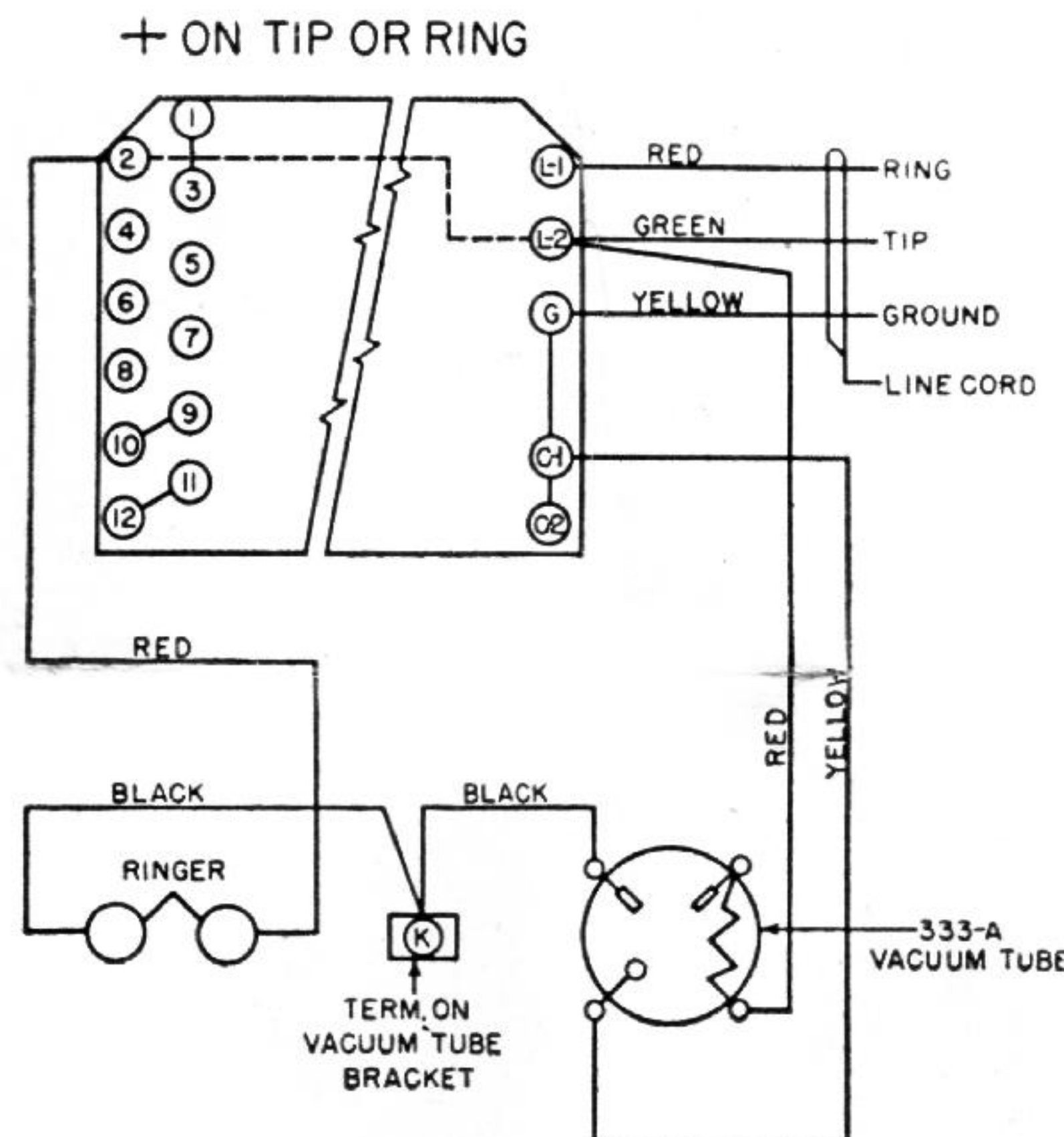
1243 AND 1250 TELEPHONE SETS
RINGER CODES VE, VF, VG, VH, VN
VK, VL, VM, VP, VR E, F, G, H, N K, L, M, P, R



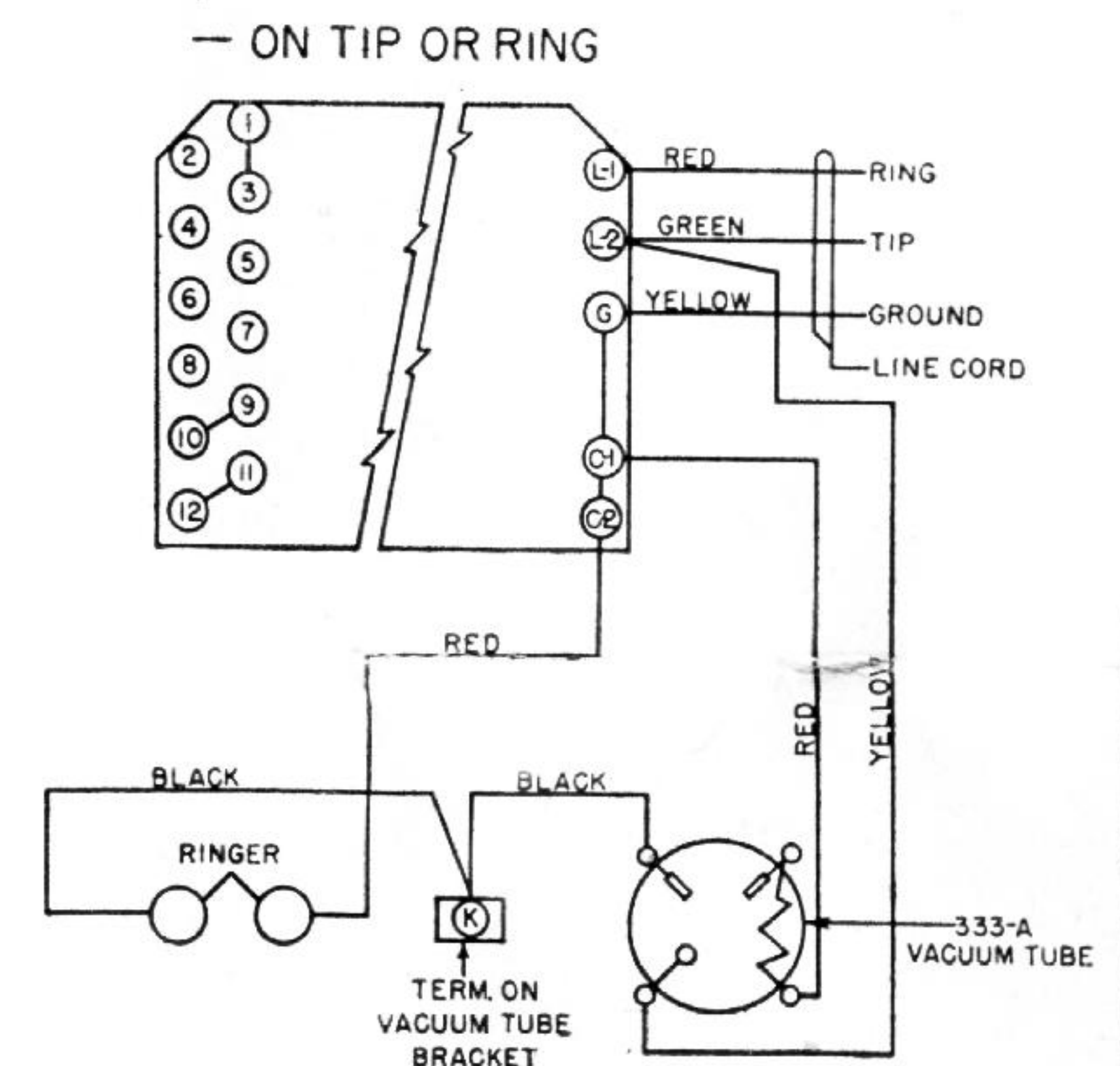
THE ABOVE CONNECTIONS ARE FOR STATIONS FROM RING SIDE OF LINE TO GROUND.
FOR STATIONS FROM TIP SIDE OF LINE TO GROUND, CONNECT RELAY AND RINGER LEADS AS SHOWN ABOVE, BUT CONNECT RING OF LINE TO L-2, AND TIP OF LINE TO L-1.
"A" WHEN VINCENT RELAY IS NOT USED, (I. E. FOR CODES WITHOUT "V") CONNECT BLACK OF RINGER TO C-2

LINE, RINGER AND 333-A TUBE CONNECTIONS

1243 TA AND 1250 TA TELEPHONE SETS
(SEE NOTE 5 ABOVE)



THE CONNECTIONS ABOVE ARE FOR + TIP STATION.
FOR + RING STATION CONNECT TUBE AND RINGER LEADS AS SHOWN, BUT CONNECT RING OF LINE TO L-2 AND TIP OF LINE TO L-1



THE CONNECTIONS ABOVE ARE FOR - TIP STATION.
FOR - RING STATION CONNECT TUBE AND RINGER LEADS AS SHOWN, BUT CONNECT RING OF LINE TO L-2 AND TIP OF LINE TO L-1