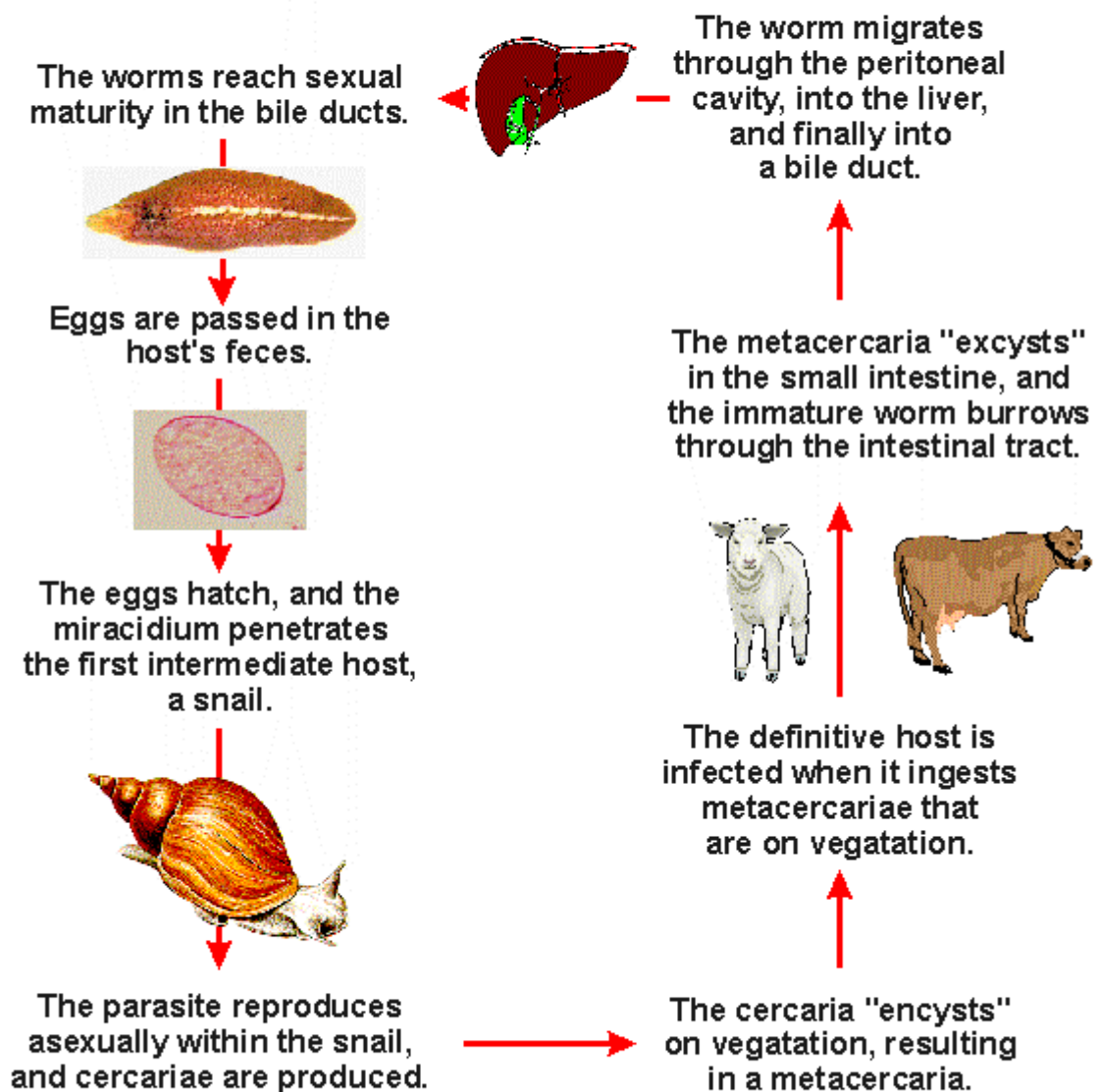


THE LIFE CYCLE OF *FASCIOLA HEPATICA* (THE SHEEP LIVER FLUKE)



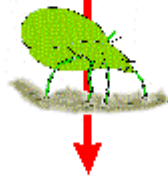
(Parasites and Parasitological Resources)

THE LIFE CYCLE OF *MONIEZIA EXPANSA*

The adult tapeworm is found in the host's small intestine.

The definitive host is infected when it eats an infected intermediate host.

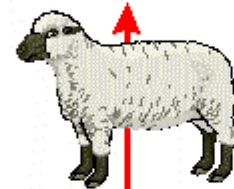
Eggs are passed in the host's feces.



The eggs are ingested by the intermediate host, a mite.



A cysticercoid develops in the intermediate host.



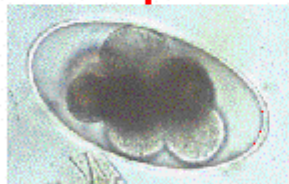
(Parasites and Parasitological Resources)

THE LIFE CYCLE OF *NEMATODIRUS* SPP.

Male and female worms occur in the host's small intestine.

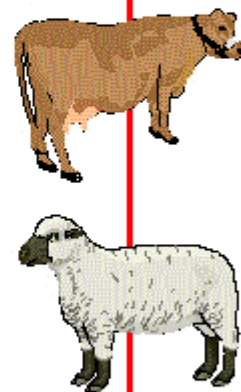
Infective juveniles mature into sexually mature adults.

Female worms produce eggs that are passed in the host's feces.



Eggs develop and hatch, liberating infective juveniles.

Infective juveniles are eaten by the host.



(Parasites and Parasitological Resources)