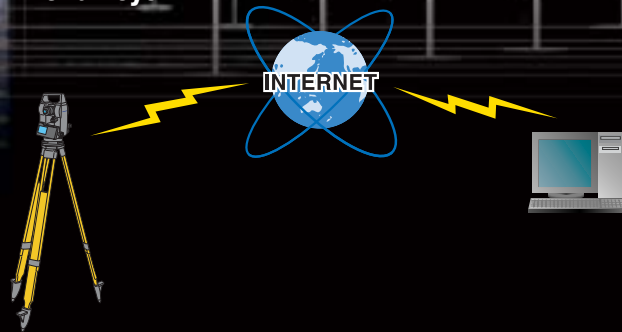


SOKKIA



Instantaneous data transfer between any worksite and your office.

The SFX function harnesses the power of the Internet to enable Sokkia's Total Stations to send data to and receive data from your office in the blink of an eye.



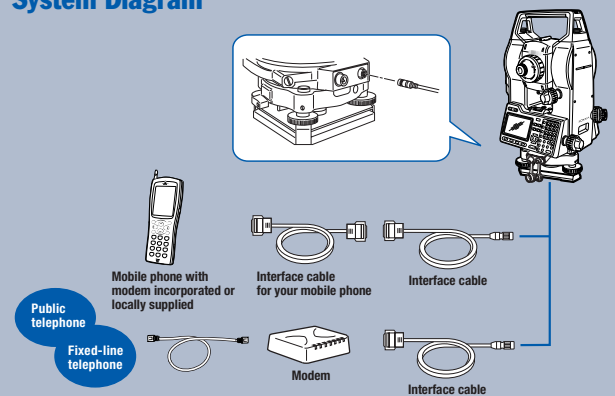
- The Total Station can send surveyed data to a specified e-mail address and receive coordinate data for setting-out.*1 Data transfer to and from your FTP server is also available.
- It is no longer necessary for surveyors to stop by the office to hand over their data. They can transfer it to and from anywhere, even the other side of the globe!
- Just connect the mobile phone (and modem, if necessary) and Total Station using the appropriate cables, establish an Internet connection, and select the job files. No other devices, such as a PDA or portable PC, are necessary. No need to look for a phone jack or check Internet settings when working in an unfamiliar place.
- All SFX functions can be performed via the Total Station's operation panel.
- Multiple job files can be sent out simultaneously.
- Password protection is available to prevent unauthorized use.
- Dial-up setting for the Total Station can be easily configured from your PC using the dedicated software tool. *2

*1 Data should be in the SDR33, SDR2x or CSV (Series 030R only) formats.

*2 Please consult your local dealer for this software tool.

Get the job done even quicker, and enjoy an enhanced level of productivity with Sokkia Field-info Xpress.

System Diagram



SFX requires connectivity using a mobile phone with a service provider capable of e-mail data transfer to an external source, as well as an active e-mail account and FTP server. Consult your local telecoms operator for proper equipment and connectivity requirements.

SOKKIA CO.,LTD.

ISO9001 Certified (JQA-0557)
<http://www.sokkia.co.jp/english/>

INTERNATIONAL SALES DEPARTMENT
260-63 HASE, ATSUGI, KANAGAWA, 243-0036 JAPAN
PHONE +81-46-248-7984 FAX +81-46-247-1731