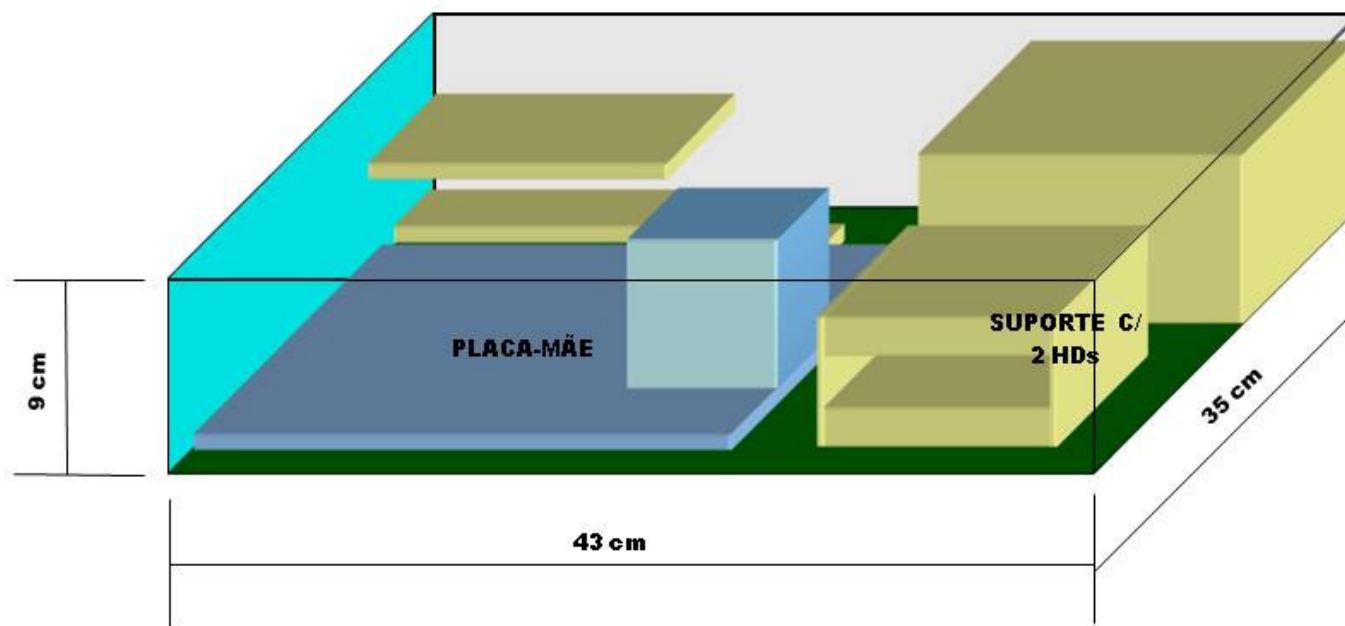




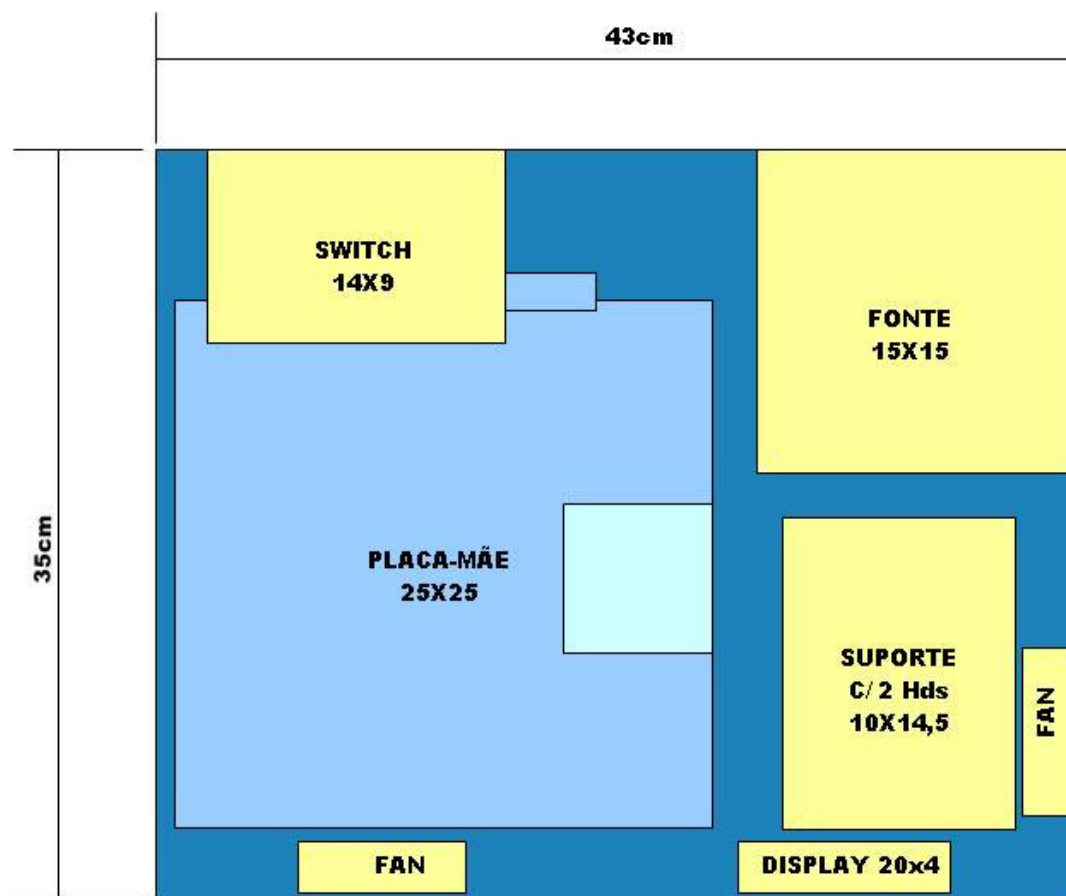
## CAIXA ORIGINAL



Luiz Francisco Bozo	3D
<b>MAQUETE 01</b> (slide1)	CAIXA ORIGINAL
<b>LxPxA:</b> 43x35x9cm	suporte p/ 2 HDs
<b>Obs.:</b> A < 2U	



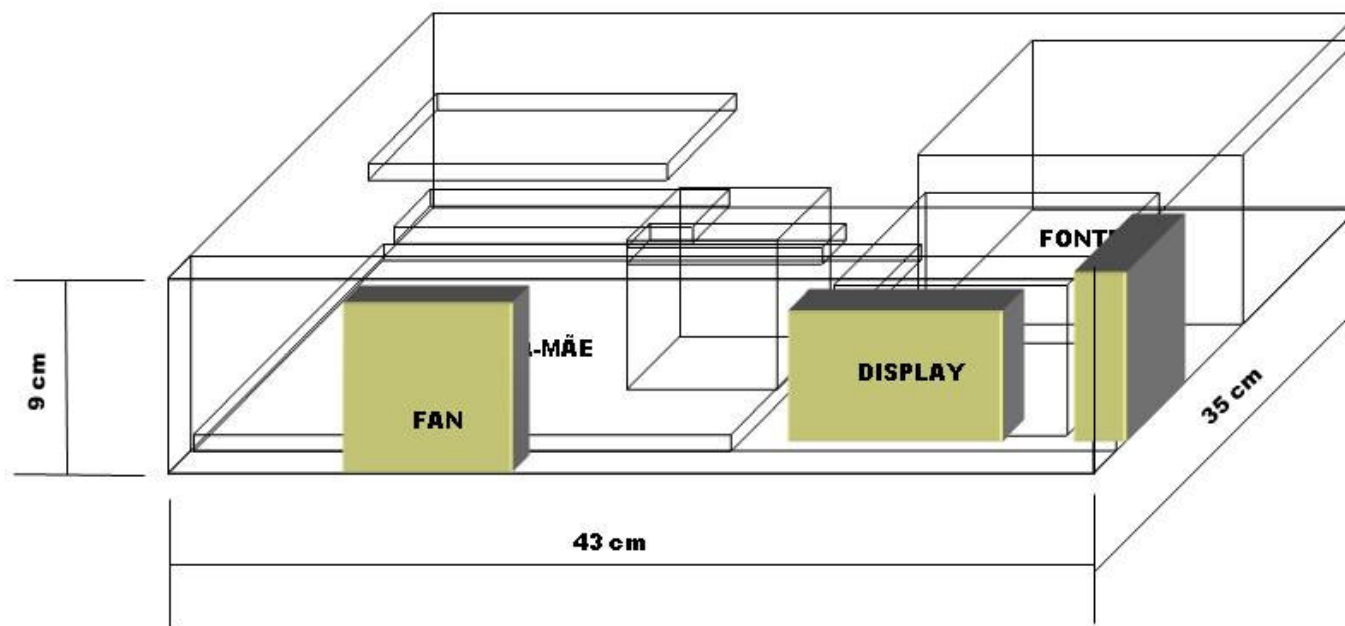
## CAIXA ORIGINAL



Luiz Francisco Bozo	<b>VISTA SUPERIOR</b>
<b>MAQUETE 01</b> (slide2)	CAIXA ORIGINAL
<b>LxPxA:</b> 43x35x9cm	suporte p/ 2 HDs
<b>Obs.:</b> A < 2U	



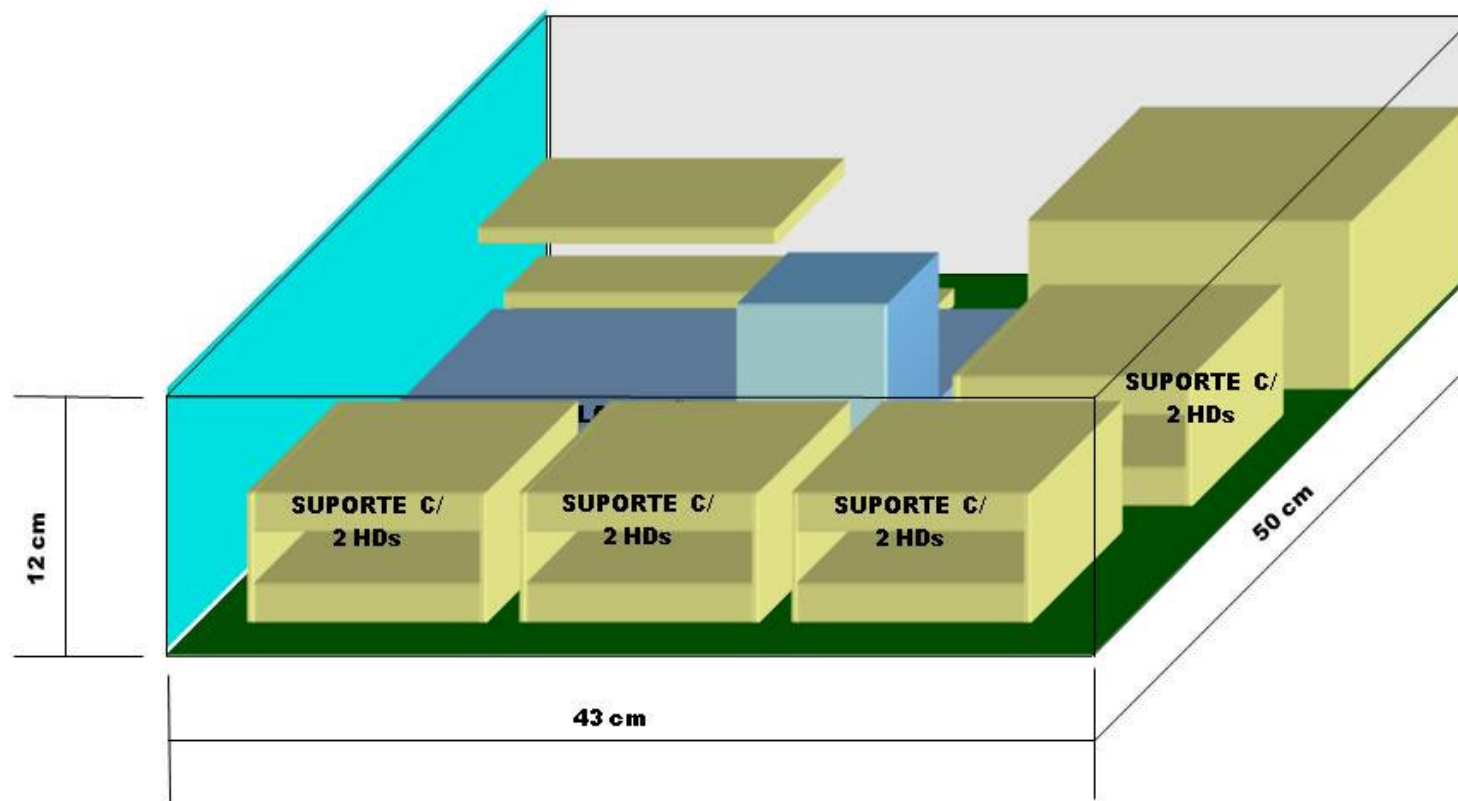
## CAIXA ORIGINAL



Luiz Francisco Bozo	3D
MAQUETE 01 (slide3)	CAIXA ORIGINAL
LxPxA: 43x35x9cm	suporte p/ 2 HD's
Obs.: Posicionamento de FAN e DISPLAY 20x4	



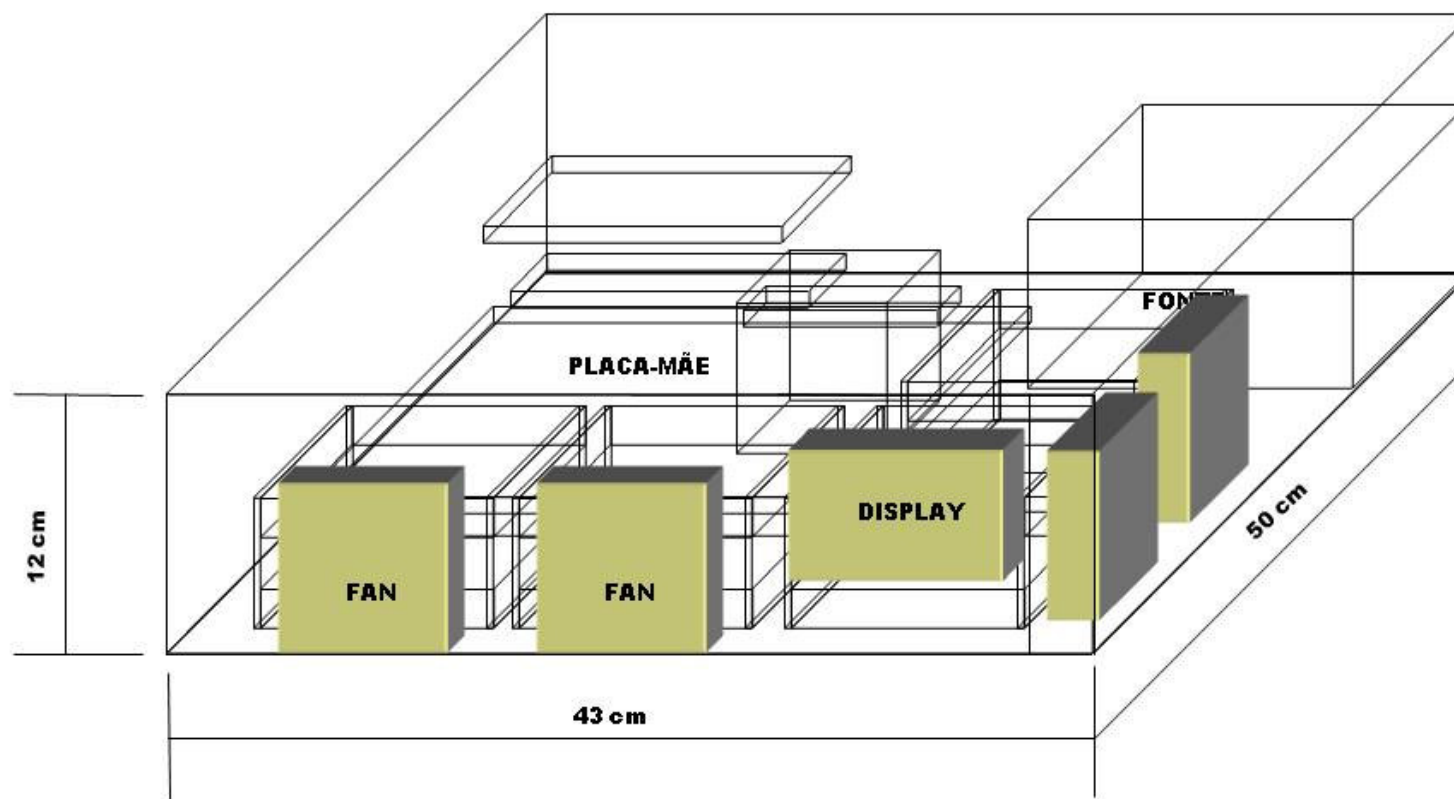
## CAIXA EXPANDIDA C/ 4 SUPORTES P/ 2 HDs



Luiz Francisco Bozo	3D
MAQUETE 02 (slide4)	Caixa expandida(P e A)
LxPxA: 43x50x12cm	4 suportes p/ 2 HDs
Obs.: A ~ 2U	



## CAIXA EXPANDIDA C/ 4 SUPORTES P/ 2 HDs



Luiz Francisco Bozo	3D
<b>MAQUETE 02</b> (slide5)	Caixa expandida(P e A)
<b>LxPxA:</b> 43x50x12cm	4 suportes p/ 2 HDs
<b>Obs.:</b> Posicionamento FANs e DISPLAY 20x4	

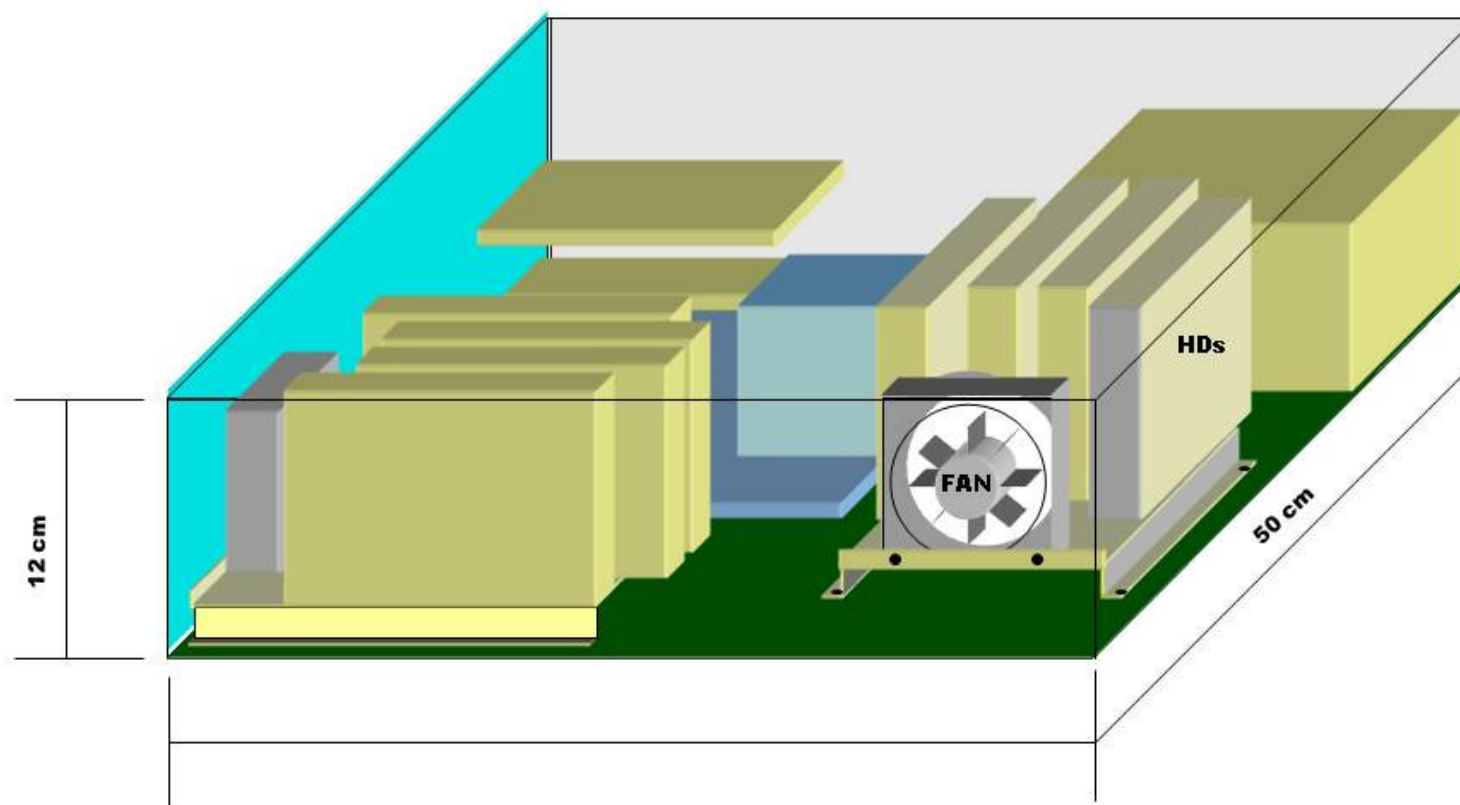


## CAIXA EXPANDIDA C/ 4 SUPORTES P/ 2 HDs

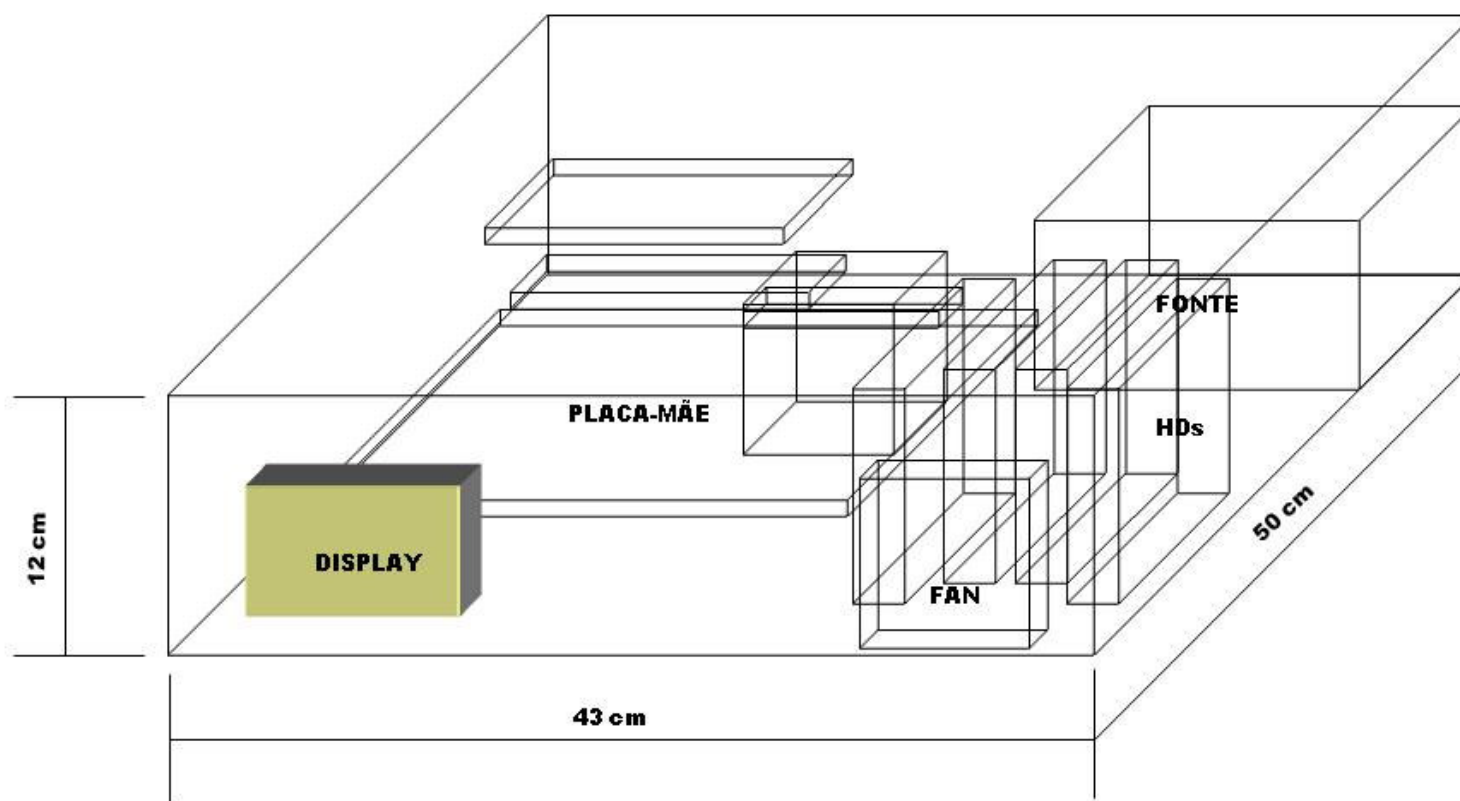
Luiz Francisco Bozo	<b>VISTA SUPERIOR</b>
<b>MAQUETE 02</b> (slide6)	Caixa expandida(P e A)
<b>LxPxA:</b> 43x50x12cm	4 suportes p/ 2 HDs
<b>Obs.:</b> Posicionamento FANs e DISPLAY 20x4	



**CAIXA EXPANDIDA  
C/ 2 SUPORTES P/ 4 HDs**

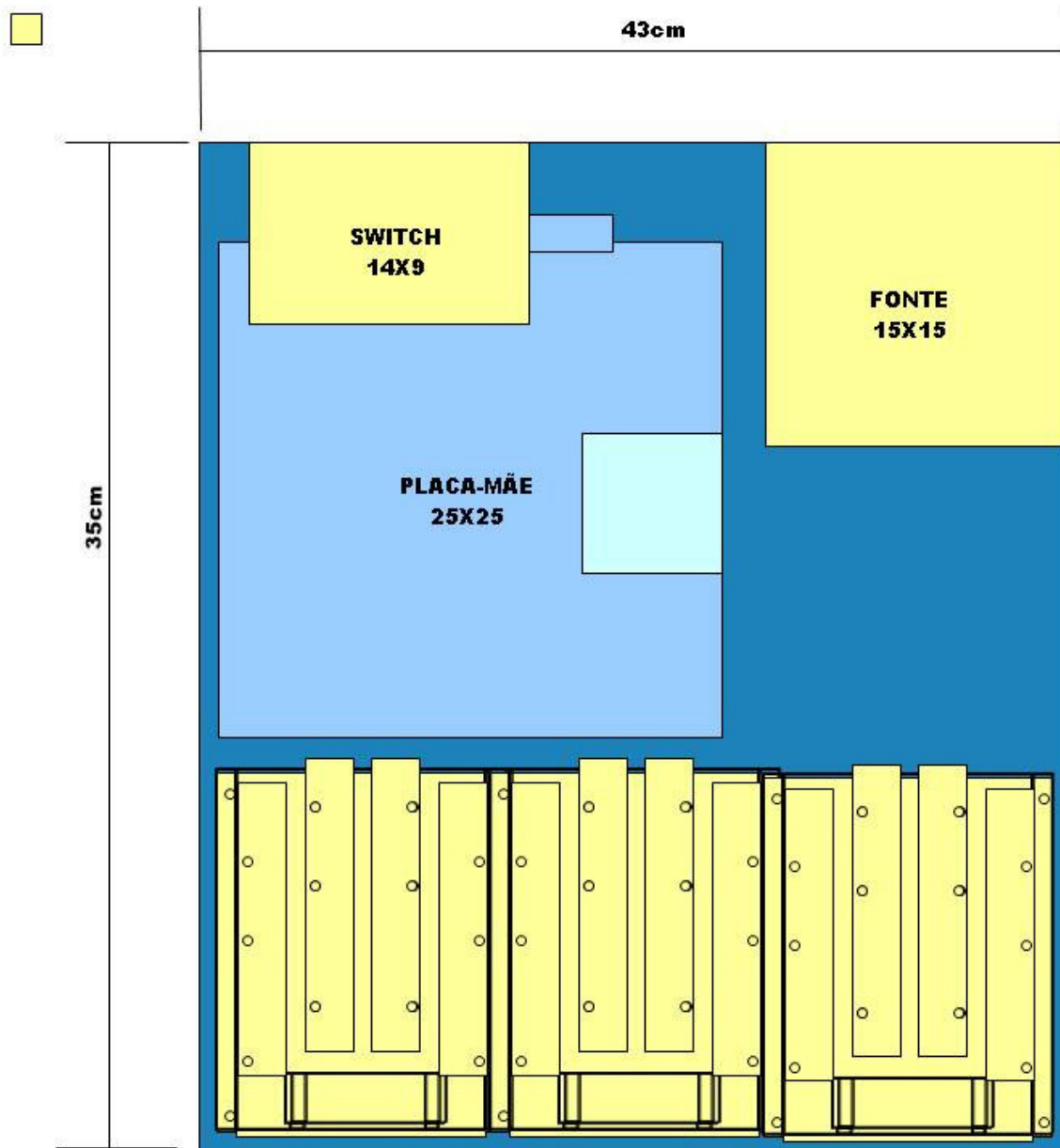


Luiz Francisco Bozo	3D
<b>MAQUETE 02 (slide7)</b>	Caixa expandida(P e A)
<b>LxPxA:</b> 43x50x12cm	2 suportes p/ 4 HDs
<b>Obs.:</b> Suporte contém FAN e até 4 HDs	

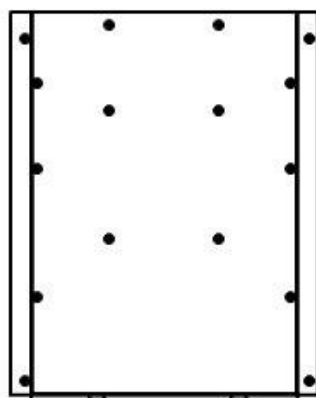


Luiz Francisco Bozo	3D
MAQUETE 02 (slide8)	Caixa expandida(P e A)
LxPxA: 43x50x12cm	1 suporte p/ 4 HDs
Obs.: Posicionamento Display 20x4	

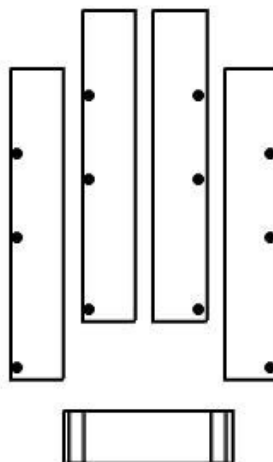




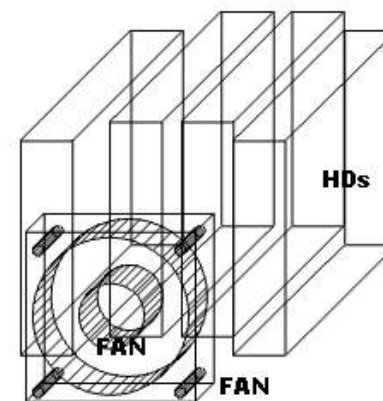
Luiz Francisco Bozo	<b>VISTA SUPERIOR</b>
<b>MAQUETE 02</b> (slide9)	Caixa expandida(P e A)
<b>LxPxA:</b> 43x50x12cm	3 suportes p/ 4 HDs
<b>Obs.:</b> Suportes contém FAN e até 4 HDs	



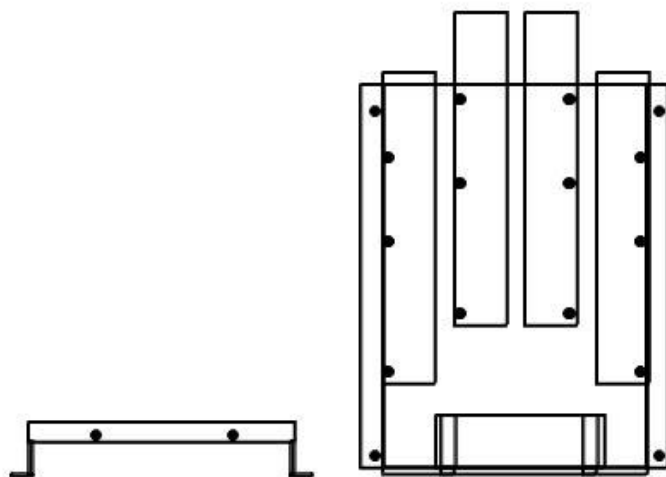
**SUPORTE  
VISTA SUPERIOR**



**Hds E FAN  
VISTA SUPERIOR**

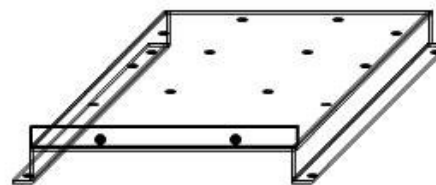


**VISTA 3D**

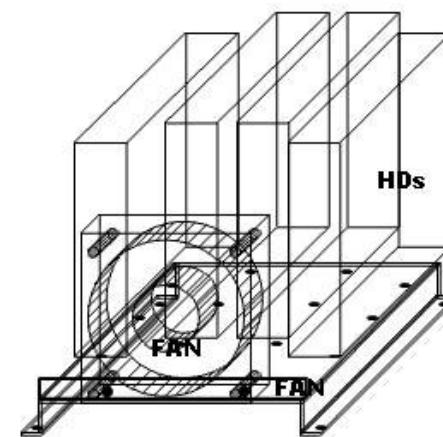


**SUPORTE  
VISTA FRONTAL**

**HDs E FAN SOBRE O  
SUPORTE  
VISTA SUPERIOR**

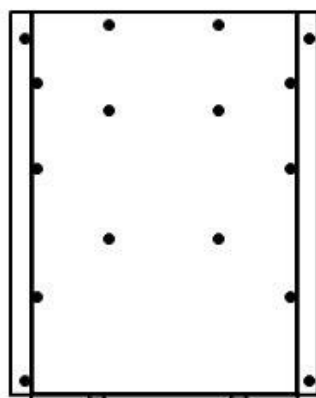


**SUPORTE  
VISTA 3D**

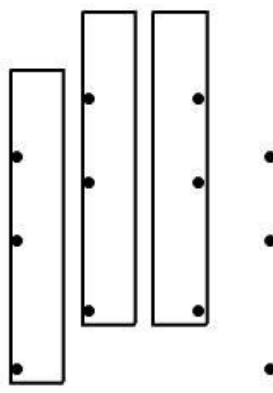


**HDs E FAN SOBRE O SUPORTE**

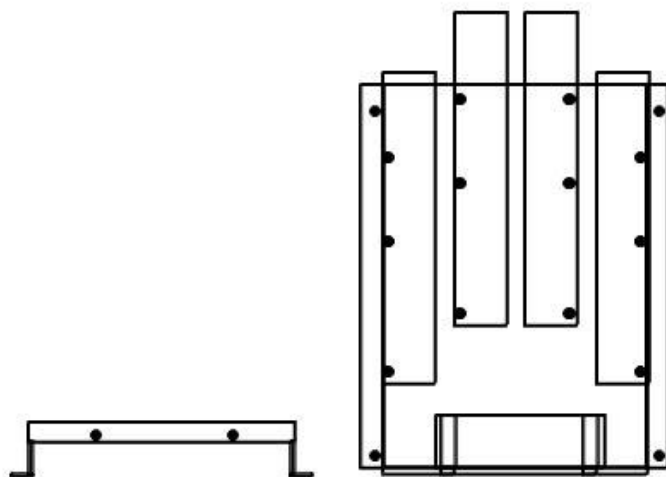
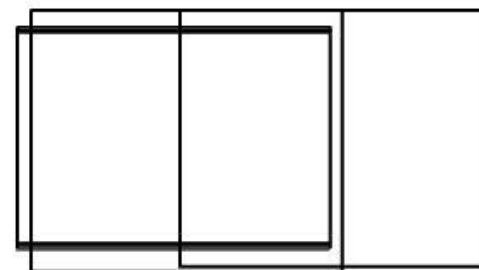
**SLIDE 10 – DETALHES DO SUPORTE P/ 4 Hds C/ FAN**



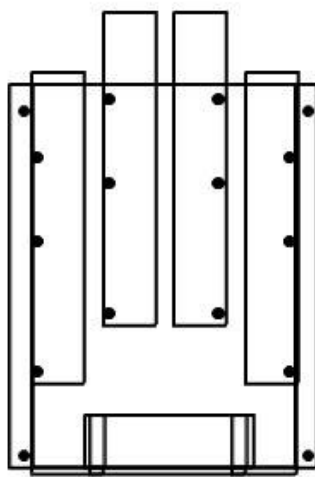
**SUPORTE  
VISTA SUPERIOR**



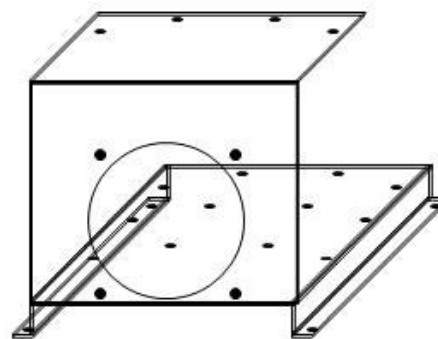
**Hds E FAN  
VISTA SUPERIOR**



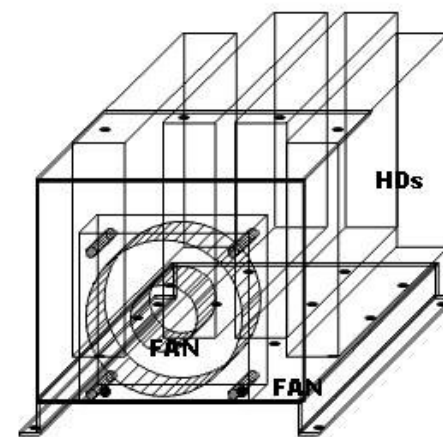
**SUPORTE  
VISTA FRONTAL**



**HDs E FAN SOBRE O  
SUPORTE  
VISTA SUPERIOR**

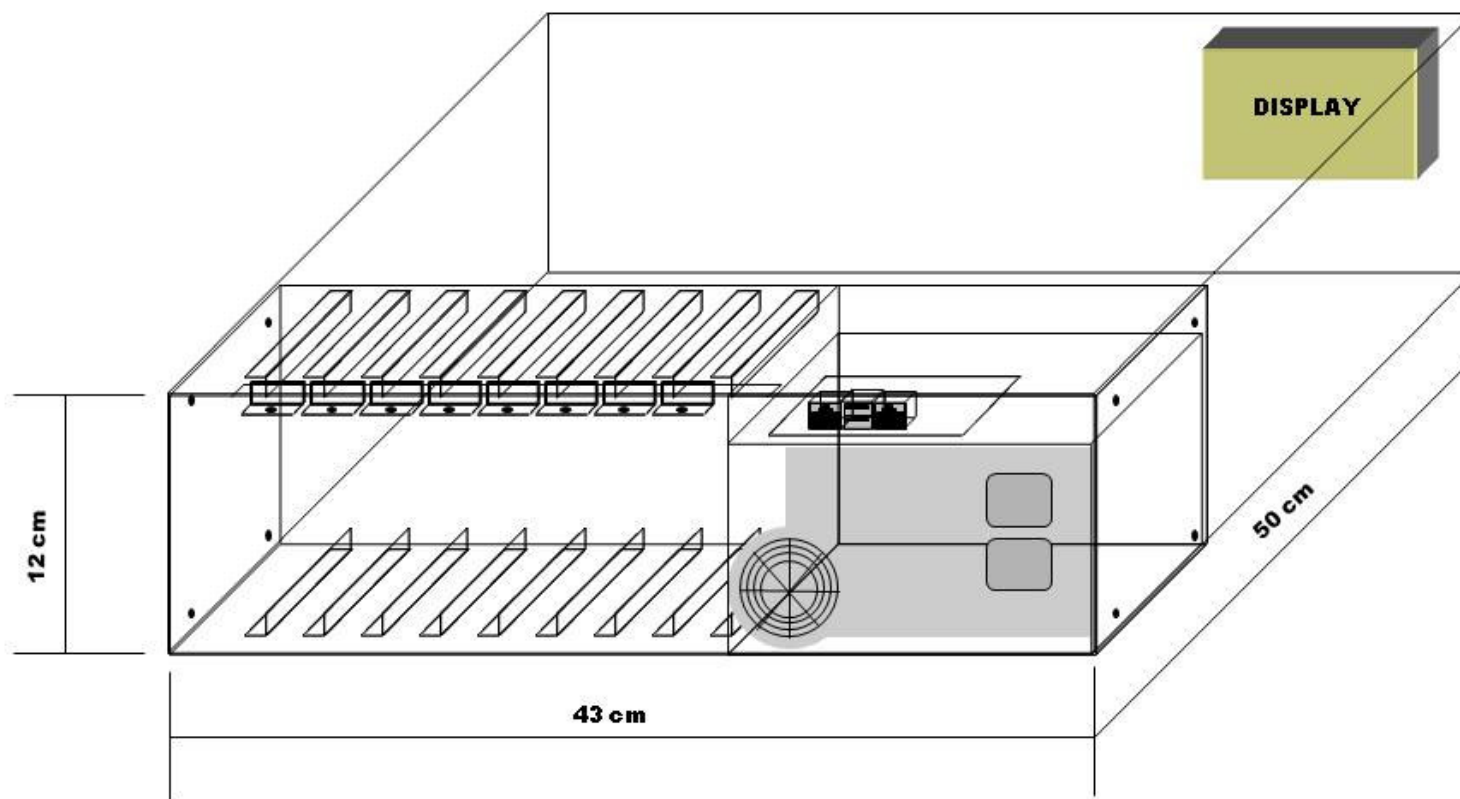


**SUPORTE  
VISTA 3D**

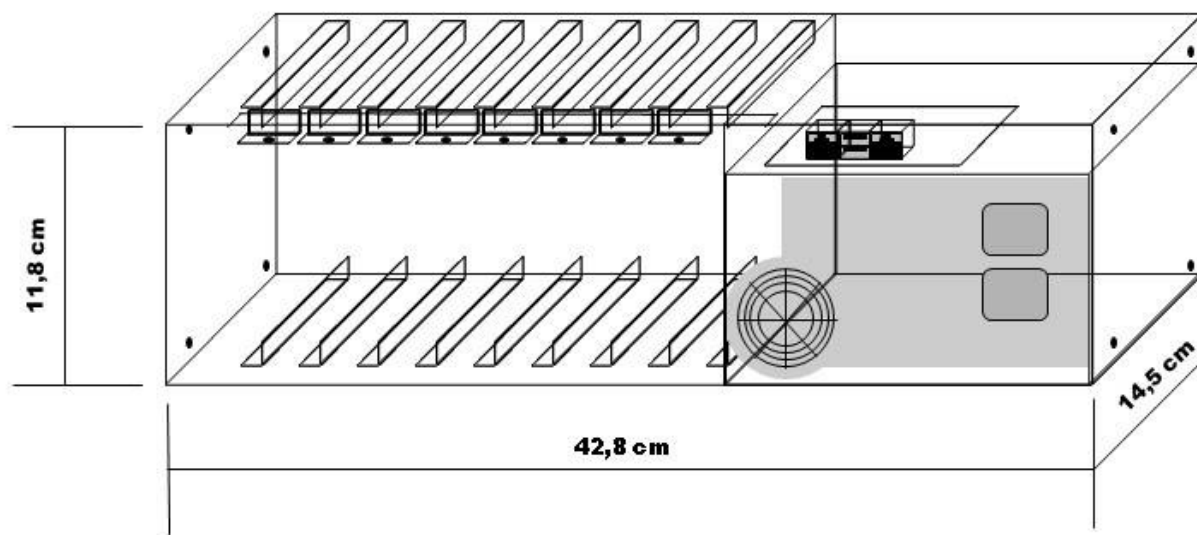


**HDs E FAN SOBRE O SUPORTE**

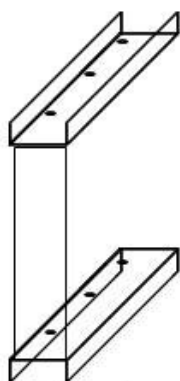
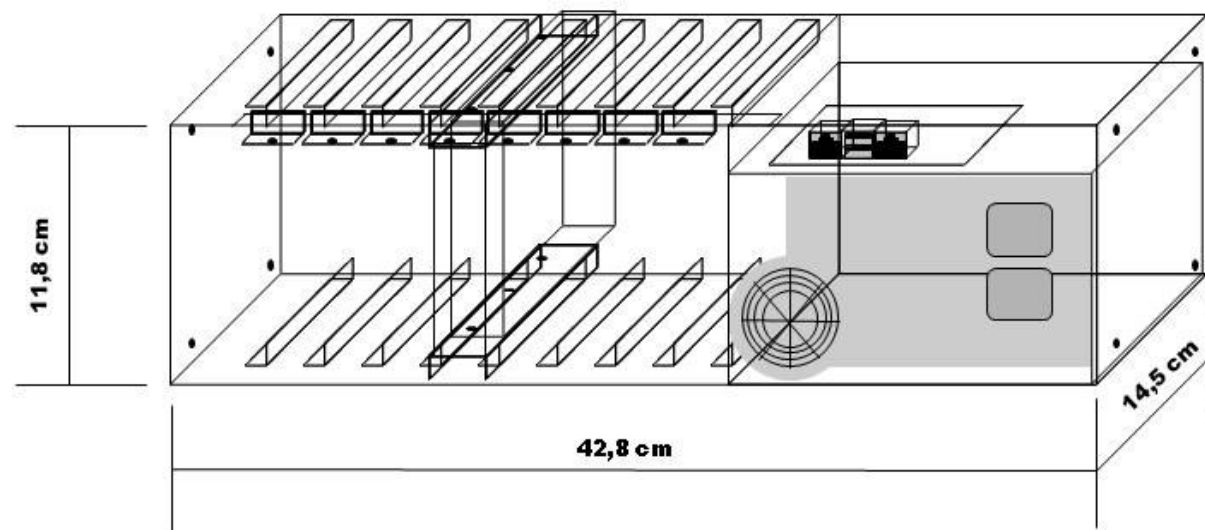
**SLIDE 11 – SUPORTE P/ 4 Hds C/ FAN C/ ABA SUPERIOR**



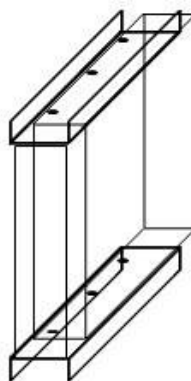
Luiz Francisco Bozo	3D
<b>MAQUETE 03</b> (slide12)	Caixa expandida(P e A)
<b>LxPxA:</b> 43x50x12cm	1 suporte c/ chassi
<b>Obs.:</b> Suporte p/8 Hds + Fonte + Placa RJ+USB	



Luiz Francisco Bozo	3D
<b>MAQUETE 03</b> (slide13)	Caixa expandida(P e A)
<b>LxPxA:</b> 43x50x12cm	1 suporte c/ chassi
<b>Obs.:</b> Detalhe do chassi interno c/ 8 trilhos p/ HDs	



fixador



HD preso ao fixador

Luiz Francisco Bozo	3D
<b>MAQUETE 03</b> (slide14)	Caixa expandida(P e A)
<b>LxPxA:</b> 43x50x12cm	1 suporte c/ chassi
<b>Obs.:</b> Detalhe de 1HD no trilho c/ fixador	