

# litele

LC SERIES  
Setting Manual for CCD  
Barcode Reader

**litele**

All Rights Reserved  
Print in HongKong  
S/N:82010-12

## APPENDIX:B

### CODE 39 FULL ASCII CODE TABLE



START

---



z



}



{



~



|



DEL

---



EXIT

## Preface:

First, we sincerely thank for your buying litele LC Series, a barcode scanner applying the charge coupled device (CCD). It can identify and read the commodity codes such as EAN-8, EAN-13, UPC-A and UPC-E, the ISSN/ISBN code, as well as CODE 39, CODABAR, CODE 128, CODE 93, Chinese post code, Matrix 25 and ITF 2 OF 5, etc., and can be connected to the common computer system.

You would obtain the service offered by the Company and various dealers and maintenance centers after buying this product. Our service department will supply the instant and professional service to you.

Please read this manual for proper installation and usage.

### Ver. 2.3

The manual is applied to litele LC series CCD barcode reader, with ROM program version No. 2.3

S/N:82010-12

## Warning

This product and even its connected computer will be damaged with improper usage. The installation and removal will be carried out after the computer is powered off.

In the case of usage of keyboard connection, other keyboard device is not allowed to connect in series.

In the case of usage of serial interface, other power supply adapter is not allowed to use.

When the inner parts of this product expose due to falling down or damage, the usage must be stopped immediately and the power supply must be powered off.

In case that some abnormalities such as high temperature, smoke is found during usage of this product, please you power off the power supply and stop usage of this project immediately so as to prevent firing or burning injure.

Do not disassemble this product at will. If it is necessary to be removed or repaired, please contact our service centers.

## APPENDIX:B

### CODE 39 FULL ASCII CODE TABLE



l



m



n



o



p



q



r



s



t



u



v



w



x



y



EXIT

## APPENDIX:B

### CODE 39 FULL ASCII CODE TABLE



START



^



e



-



f



`



g



a



h



b



i



c



j



d



k

Component  
Appearance  
Installation  
Usage  
Setting  
Q&A

### Component

The following components will be found in the product package

For LC-80KB, including:

Guarantee card, scanner, fast setting page, manual

For LC-80RS, including:

Guarantee card, scanner, fast setting page, manual

For LC-80USB, including:

Guarantee card, scanner, fast setting page, manual

For LC-90KB, including:

Guarantee card, scanner, fast setting page, manual

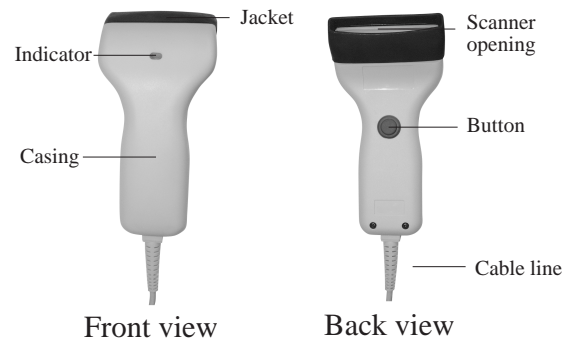
For LC-90RS, including:

Guarantee card, scanner, fast setting page, manual

For LC-90USB, including:

Guarantee card, scanner, fast setting page, manual

### Appearance and names of components



## Installation:

Installation of LC-80KB,LC-90KB

Power off the power supply of host;

Pull out the keyboard connection;

Insert the plug of scanner;

Insert the keyboard in the scanner;

Power on the power supply of host.

Installation of LC-80RS,LC-90RS

Power off the power supply of host;

Insert the plug of scanner in the host serial interface;

Insert the plug and power on.

Power on the power supply of host.

Installation of LC-80USB,LC-90USB

Insert the plug of scanner

Insert the line cable of USB

## Usage:

This product is applied to scanning one-dimensional barcode. In the usage, hold the CCD handle, put the finger on the switch and put the opening about 1cm above the barcode. Then press the switch and a red light will be given out from the opening. At the moment adjust the position so that the barcode symbol can be covered in the range of red light. When you hear a tweeting sound from the scanner and the red lamp flashes on the top, it shows the barcode reading is success.

## APPENDIX:B

### CODE 39 FULL ASCII CODE TABLE



P



Q



R



S



T



U



V



W



X



Y



Z



[



\



]



EXIT

## APPENDIX:B

### CODE 39 FULL ASCII CODE TABLE



START



B



C



D



E



F



G



H



I



J



K



L



M



N



O

### Notes:

The barcode symbol shall be put in the center of red light.

Only one barcode can be read each time, i.e. only one barcode can be fully put within the red light.

The ability to read barcode will be reduced in a strong light environment.

The ability to read barcode will be reduced in case of defilement of the barcode symbol. The connecting cable cannot be pulled with a strong strength.

The barcode symbol shall have a certain height so that the barcode read can be carried out smoothly.

### Setting:

The parameter of CCD can be set and the set parameter will not be lost after the power supply is powered off.

Parameters capable of being set:

Recovery ex-work setting

Communication parameter: port mode

Built-in Decoder: decoding option , length, verification, adding code in the head and end.

















Work mode: triggering, long-time brightening, tweeting mode.

## Common Q&A

Problem	Diagnosis	Solution
The scanner does not tweet after the host is started up.	The interface of host is damaged.	Replace the host interface.
	The connecting cable is damaged.	Check the cable, repaired if damaged.
	The scanner is damaged.	Send to the maintenance for repair.
	The power supply of the serial interface scanner is not connected on well or is damaged.	Connect the power supply again or replace the power supply.
The scan can not be carried out.	Check if the code system can be applied to this scanner or the code system is not set to 'open'status.	Set according to the setting manual.
	The scanning distance is too short.	Expand the distance.
	The barcode symbol greatly exceeds the scope of red light.	Scale down the barcode symbol.
The scan is not carried out smoothly.	The surface of the barcode symbol is damaged or dirty.	Manually enter by the keyboard.
	The glass at the scanner opening is dirty.	Clean the glass at the opening.
	The environmental light is too strong.	Change the working position.
After completion of scan, the scanner tweets without display.	The interface mode or communication parameter is not correct.	Set according to the setting manual.
	The cable line has a poor contact.	Replace or repair the cable line.

## APPENDIX:B

### CODE 39 FULL ASCII CODE TABLE

	
2	:
	
3	;
	
4	<
	
5	=
	
6	>
	
7	?
	
8	@
	
9	A



EXIT

APPENDIX:B

CODE 39 FULL ASCII CODE TABLE



START



\$



%



&



,



(



)



\*



+



'



-



.



/



0



1

CATALOG

System setting.....1  
 Scanning mode selection.....2  
 Output device .....3  
 RS-232C serial communication  
 parameters setting.....3-6  
 Beeper tone selection.....6-7  
 Keyboard parameters setting.....7  
 Keyboard emulation parameters  
 setting.....8-9  
 Inter-message delay.....10  
 Inter-character delay.....10  
 CODE39 parameters setting.....11  
 CODEBAR parameters setting.....11  
 UPC/EAN parameters setting.....12-14  
 ISSN/ISBN conversion.....14  
 Reading code selection.....14-16  
 Header and trailer.....16  
 Code length selection.....17-18  
 Bar code identifier code selection.....19-20



START



RESET

The reading of the "RESET"Label turns all the parameters back to default values.



ABORT

The reading of the "ABORT"label discards all the parameters read prior to the "EXIT"



START

Start setting



EXIT

Exit setting



SET

Confirm input



Ignore all code system



Show Version

## APPENDIX:B

### CODE 39 FULL ASCII CODE TABLE



SYN  
(F6)



GS  
(ESC)



ETB  
(F7)



RS  
Ctl(L)



CAN  
(F8)



US  
Alt(L)



EM  
(F9)



SP



SUB  
(F10)



!



ESC  
(F11)



"



FS  
(F12)



#



EXIT

## APPENDIX:B

### CODE 39 FULL ASCII CODE TABLE



START



LF  
(Enter)(num)



VT  
(Right)



FF  
(PgUp)



CR  
(Enter)



SO  
(PgDn)



SI  
shift(L)



DLE  
5(num)



DC1  
(F1)



DC2  
(F2)



DC3  
(F3)



DC4  
(F4)



NAK  
(F5)

### Scanning Mode Selection



(Trigger)

The scanner becomes inactive as soon as the data is transmitted. It must be triggered to become active again.



(Turbo Trigger)

The scanner switch is pressed and double reading for the same bar code is not permitted. The scanner will be-inactive after the switch is released.



(AutoScan)

In auto scan mode, the scanner is still active after the data is transmitted, but the successive transmission of the same bar code is not allowed.



(Alt)

This scanner will light up when press the scanner trigger switch once.And,the scanner will turn off for next pressing.



(Testing)

For factory testing use only



EXIT



START

## OUTPUT DEVICE



RS232-C



KEYBOARD



USB

## RS-232C SERIAL COMMUNICATION PARAMETERS SETTING

### BAUD RATE



19200



9600



4800



2400

## APPENDIX:B

### CODE 39 FULL ASCII CODE TABLE



START



NUL



SOH  
(Ins)



STX  
(Del)



ETX  
(Home)



EOT  
(End)



ENQ  
(Up)



ACK  
(Down)



BEL  
(Left)



BS  
(Backspace)



HT  
(TAB)



EXIT

# APPENDIX:B

## FUNCTION KEY EMULATION

FUNCTION KEY	ASCII	CODE
Ins	\$A	01
Del	\$B	02
Home	\$C	03
End	\$D	04
Up	\$E	05
Down	\$F	06
Left	\$G	07
Backspace	\$H	08
TAB	\$I	09
Enter(num)	\$J	0A
Right	\$K	0B
PgUp	\$L	0C
Enter	\$M	0D
PgDn	\$N	0E
Shift	\$O	0F
5(num)	\$P	10

FUNCTION KEY	ASCII	CODE
F1	\$Q	11
F2	\$R	12
F3	\$S	13
F4	\$T	14
F5	\$U	15
F6	\$V	16
F7	\$W	17
F8	\$X	18
F9	\$Y	19
F10	\$Z	1A
F11	%A	1B
F12	%B	1C
ESC	%C	1D
Ctl(L)	%D	1E
Alt(L)	%E	1F



1200



600

DATABIT



7



8

STOPBIT



1



2

PARITY



EVEN



ODD



EXIT



START



MARK



SPACE



NONE

### SERIAL PORT MESSAGE TERMINATOR



NONE



CR/LF



CR



LF



HTAB

## APPENDIX:B

### CODE 39 FULL ASCII CODE TABLE

ASCII	CODE 39	VALEUR HEXA.	ASCII	CODE 39	VALEUR HEXA.
J	J	4A	e	+E	65
K	K	4B	f	+F	66
L	L	4C	g	+G	67
M	M	4D	h	+H	68
N	N	4E	i	+I	69
O	O	4F	j	+J	6A
P	P	50	k	+K	6B
Q	Q	51	l	+L	6C
R	R	52	m	+M	6D
S	S	53	n	+N	6E
T	T	54	o	+O	6F
U	U	55	p	+P	70
V	V	56	q	+Q	71
W	W	57	r	+R	72
X	X	58	s	+S	73
Y	Y	59	t	+T	74
Z	Z	5A	u	+U	75
[	%K	5B	v	+V	76
\	%L	5C	w	+W	77
]	%M	5D	x	+X	78
^	%N	5E	y	+Y	79
_	%O	5F	z	+Z	7A
`	%W	60	{	%P	7B
a	+A	61		%Q	7C
b	+B	62	}	%R	7D
c	+C	63	~	%S	7E
d	+D	64	DEL	%T	7F

# APPENDIX:B

## CODE 39 FULL ASCII CODE TABLE

ASCII	CODE 39	VALEUR HEXA.
NUL	%U	00
SOH	\$A	01
STX	\$B	02
ETX	\$C	03
EOT	\$D	04
ENQ	\$E	05
ACK	\$F	06
BEL	\$G	07
BS	\$H	08
HT	\$I	09
LF	\$J	0A
VT	\$K	0B
FF	\$L	0C
CR	\$M	0D
SO	\$N	0E
SI	\$O	0F
DLE	\$P	10
DC1	\$Q	11
DC2	\$R	12
DC3	\$S	13
DC4	\$T	14
NAK	\$U	15
SYN	\$V	16
ETB	\$W	17
CAN	\$X	18
EM	\$Y	19
SUB	\$Z	1A
ESC	%A	1B
FS	%B	1C
GS	%C	1D
RS	%D	1E
US	%E	1F
SP	SP	20
!	/A	21
"	/B	22
#	/C	23
\$	/D	24

ASCII	CODE 39	VALEUR HEXA.
%	/E	25
&	/F	26
'	/G	27
(	/H	28
)	/I	29
*	/J	2A
+	/K	2B
,	/L	2C
-	-	2D
.	.	2E
/	/	2F
0	0	30
1	1	31
2	2	32
3	3	33
4	4	34
5	5	35
6	6	36
7	7	37
8	8	38
9	9	39
:	/Z	3A
;	%F	3B
<	%G	3C
=	%H	3D
>	%I	3E
?	%J	3F
@	%V	40
A	A	41
B	B	42
C	C	43
D	D	44
E	E	45
F	F	46
G	G	47
H	H	48
I	I	49



STX/ETX



EOT

GOOD READ BEEPER  
TONE



Medium



Low



High



Disable



EXIT



START

## SOUND DURATION



Long



Medium



Short



Very Short

## MESSAGE TERMINATOR(FOR KEYBOARD)



None



Return/Enter



\*TAB\*



EAN-13



EAN-8



CODABAR



CODE39



CODE128



Chinese post code



Matrix 25

## PREDEFINED BAR CODE IDENTIFIERS

CODE39 bar code identifier code	M
IT20 F5 bar code identifier code	I
CODE 93 bar code identifier code	L
UPC-E bar code identifier code	E
UPC-A bar code identifier code	A
EAN-13 bar code identifier code	F
EAN-8 bar code identifier code	S
CODEBAR bar code identifier code	N
CODE128 bar code identifier code	K
Chinese post code	H
Matrix 25	G



EXIT



START

## BAR CODE IDENTIFIER CODE SELECTION



Disable



Enable



SET



CODE 93



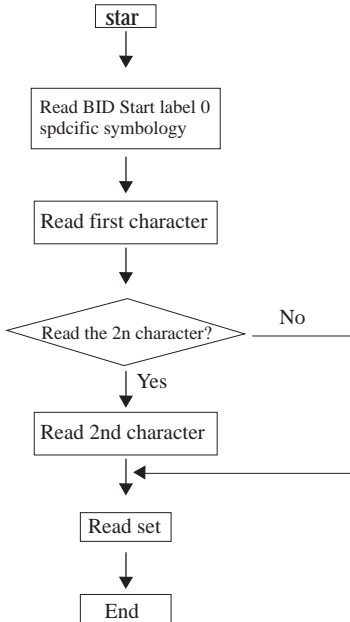
IT2OF5



UPC-E



UPC-A



## KEYBOARD EMULATION PARAMETERS SETTING



IBM AT



PS/2 30-80



IBM 5550



IBM 5295 Terminal



IBM XT



IBM 3477



IBM 5530-SC



EXIT



START

## CODE 39 PARAMETERS SETTING



STANDARD CODE 39



FULL ASCII CODE 39

## CODABAR PARAMETERS SETTING



NO



A, B, C, D



A/T, B/N, C/\*, D/E



DC1\*DC4



UPC-A Enable



EAN13 Disable



EAN13 Enable



EAN8 Disable



EAN8 Enable



Chinese post code Disable



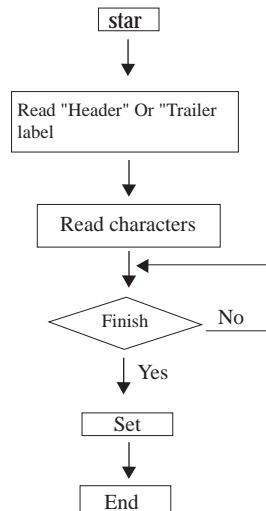
Matrix 25 post Enable



Matrix 25 Disable



Matrix 25 Enable



EXIT



START

### ADD HEADER AND TRAILER



HEADER



TRAILER



SET

### CODE LENGTH SELECTION (Min value0) (Max value64)



CODE39

SET



MIN



CODABAR

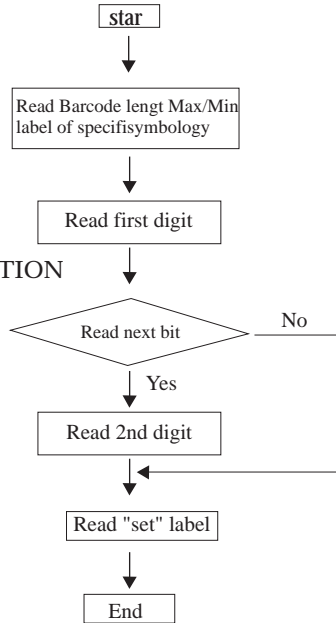
MAX



MIN



MAX



### MESSAGE DELAY



NONE



100msec



500msec



1 Second

### CHAR DELAY



None



10msec



20msec



50msec



EXIT



START



IBM 5530-ZC



NEC 9801



IBM 3196 Terminal



APPLE MAC



MOS\_SYS



PS2/30/56



IBM 3477 Terminal  
(Without break code)



NEC 5200

IT2OF5



MIN



MAX

CODE93



MIN



MAX

CODE128



MIN



MAX

MATRIX 25



MIN



MAX



EXIT



START



CODABAR Disable



CODABAR Enable



CODE93 Disable



CODE93 Enable



CODE128 Disable



CODE128 Enable



UPC-E Disable



UPC-E Enable



UPC-A Disable

## UPC/EAN PARAMETERS SETTING

UPCE=UPCA



Disable



Enable

UPCA=EAN13



Disable



Enable

UPCA LEADING CHARACTER



Disable



Enable

UPCA CHECK DIGIT



Disable



Enable



EXIT



START

### UPCE LEADING CHARACTER



Disable



Enable

### UPCE CHECK DIGIT



Disable



Enable

### EAN13 CHECK DIGIT



Disable



Enable

### EAN8 CHECEK DIGIT



Disable



Enable

### ADD ENDUM



Disable



Enable

### ISSN/ISBN CONVERSION



Active



Inactive

### READING CODE SELECTION



CODE39 Disable



CODE39 Enable



IT2OF5 Disable



IT2OF5 Enable



EXIT