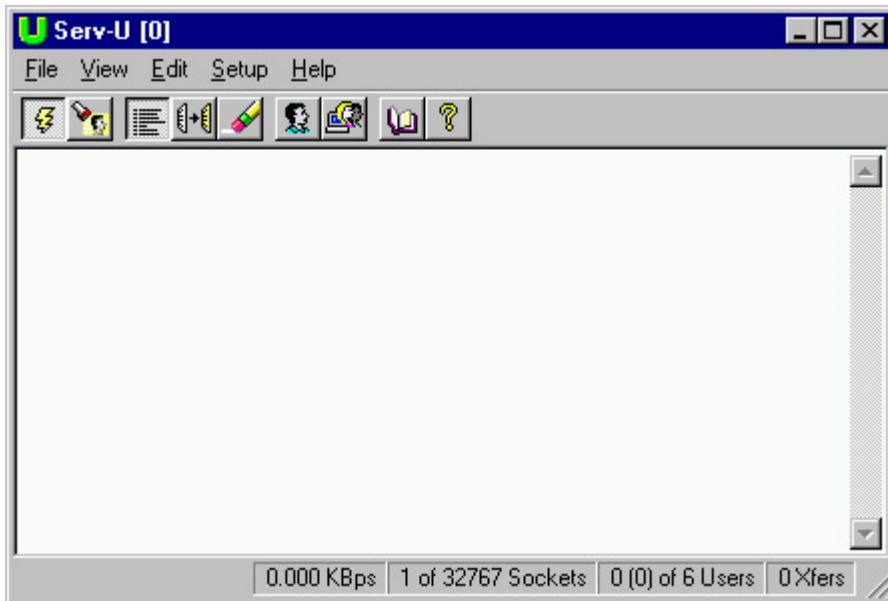


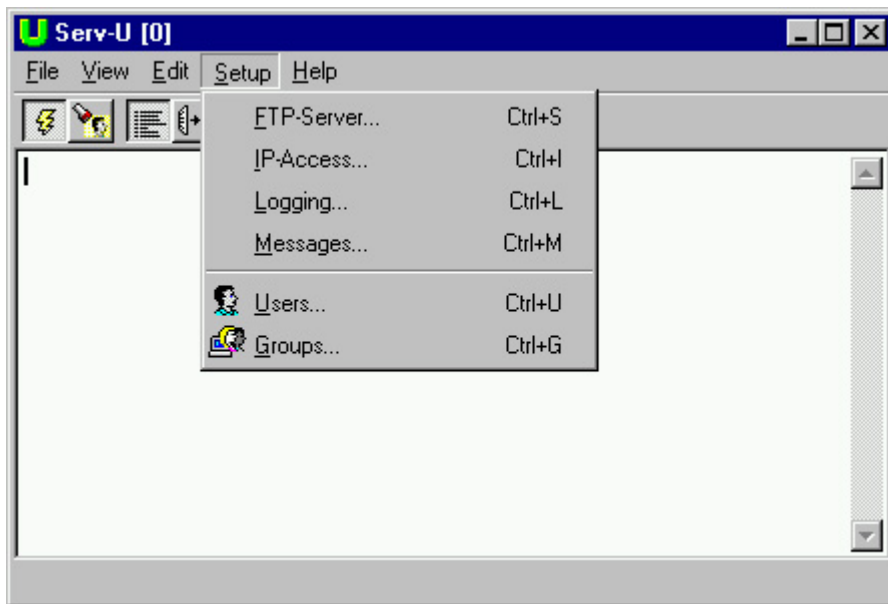
How to set up the Serv-U FTP Server.

This document does not tell you how to install the program.
Do not begin to follow these instructions unless and until you successfully installed the program.

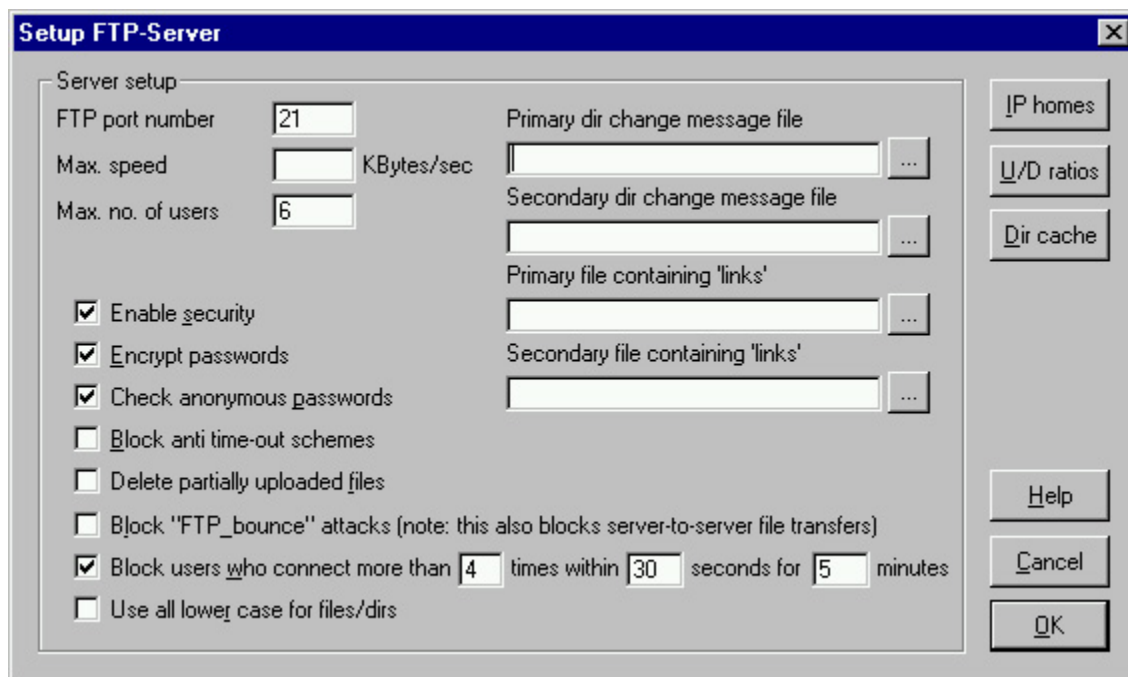
This is the main view:



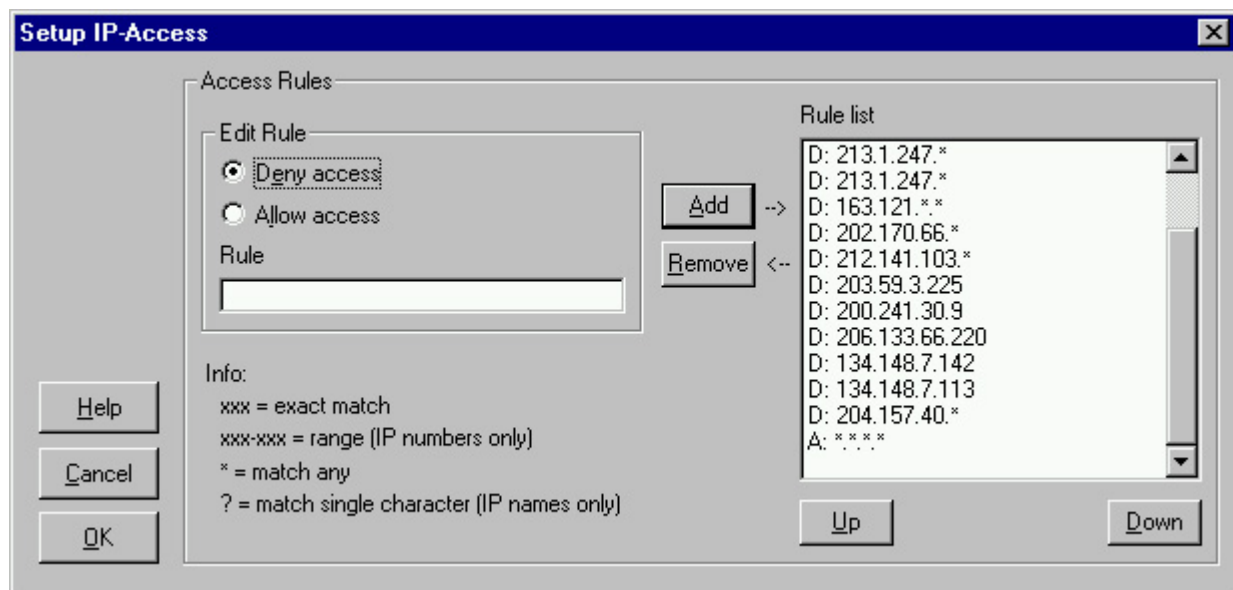
You then need to go into the setup Menu and choose FTP-Server



Set your port as you choose but remember if you are behind a firewall you will need to have that port open. Also, if you are on a college campus you will NOT be able to use 21, you might want to use something 5000+. I would not set the max speed unless you are afraid the transfers will attract attention . The max users is pretty self explanatory. The general rule is 2-3 for cable 4-6 for fast DSL 6-10 for a T-1. If you are on dial-up 1 should be the limit. Leave the rest blank unless you know what your doing. Check off the boxes as shown below.

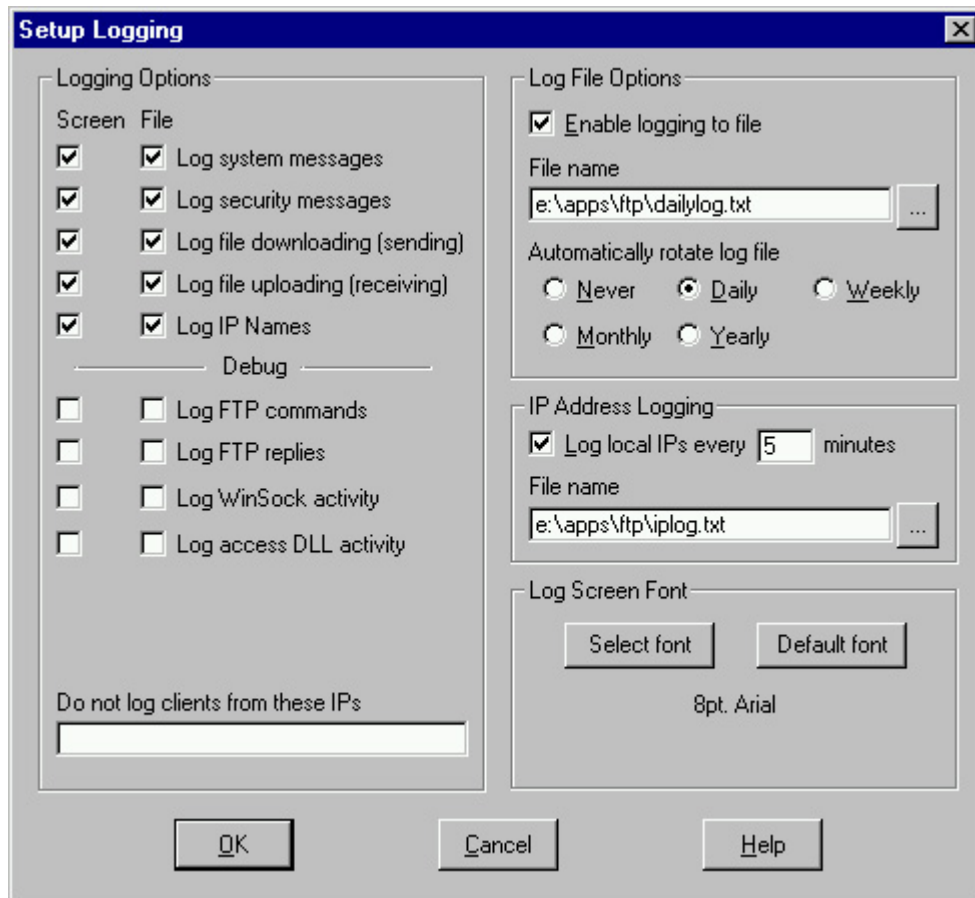


In this box below be sure if you are going to use this feature that the very last entry is "A: *.*.*" or you will block everyone. Best if you leave that whole area blank until you need to use it.

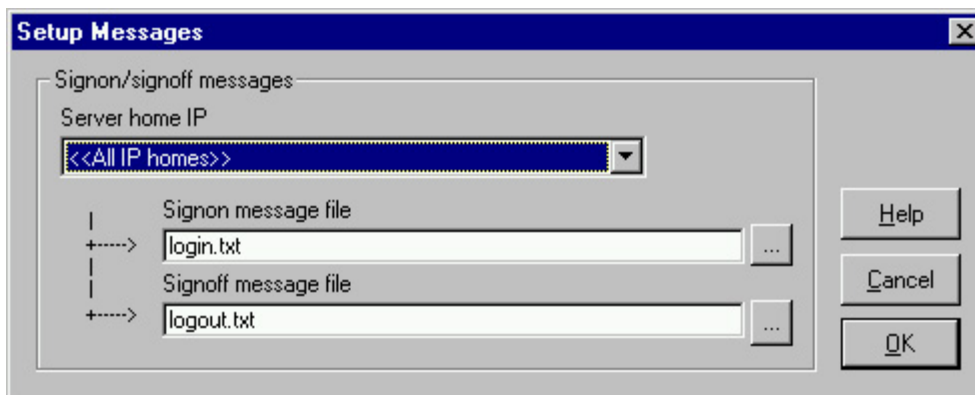


Setting up logging is something you may or may not want to do, especially if you are leaving your server up 24/7, so you can see who is downloading or who is getting bounced.

I suggest you change the port number or password regularly unless you know everyone that will be using the server.



This section below is used to be the greeting text a person will see when they log on to your server.



This is the section where you set up each users access to your hard drives.

By clicking the new button will bring up a window for a name of a user (using groups is an idea if you have a ton of users where several have the same rights).

Fill in the User Name and password and fill in the directory that will be the first thing that a users see when they log in. Use the notes area to type in the password in case the user forgets his/her password.

You MUST use the ADD button on the bottom to allow people access to your hard drive and at least one must be the same as the home directory if they can not list they will not be able to access your ftp. To retrieve files the read checkbox must be checked.

The check boxes change per directory (thus c:\FTP may be the home directory but unless you define it in the File/Directory access rules the user will not be able to download anything there)

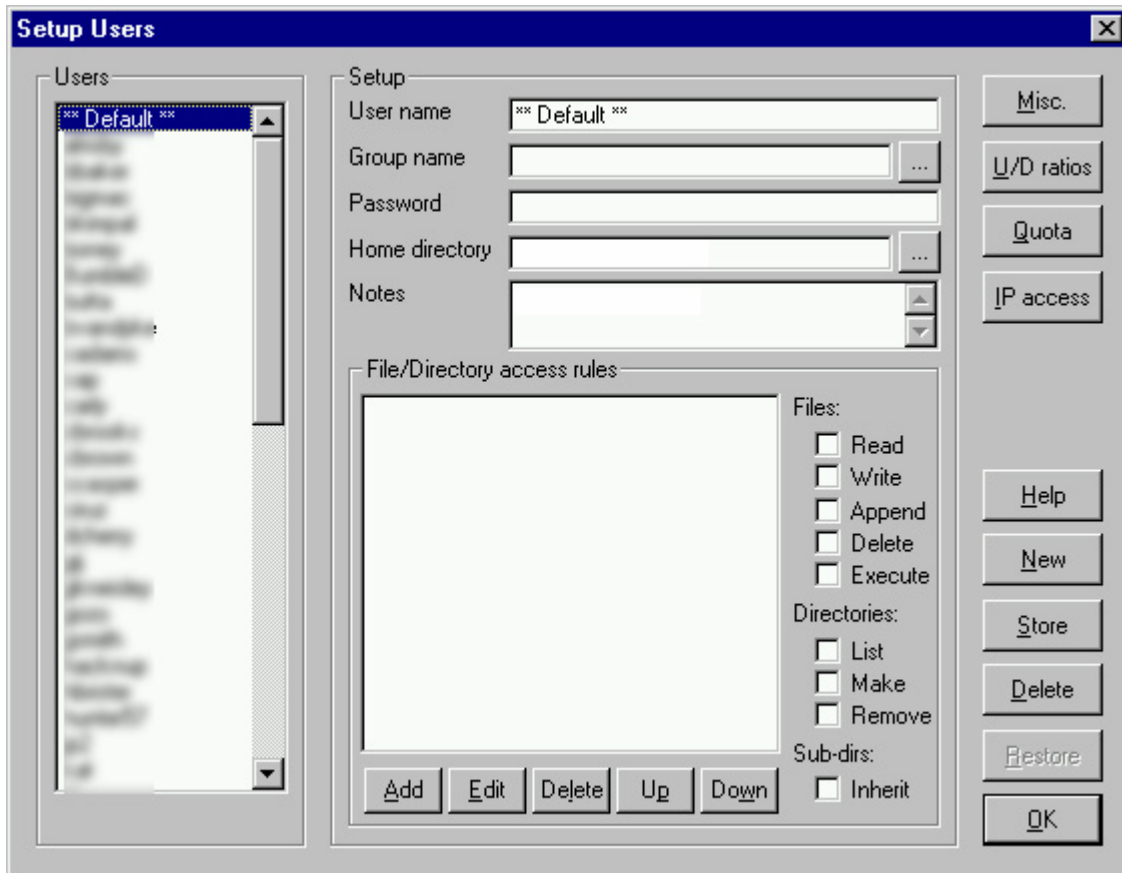
Write allows someone to upload.

Append allows a user to finish a previously unfinished upload.

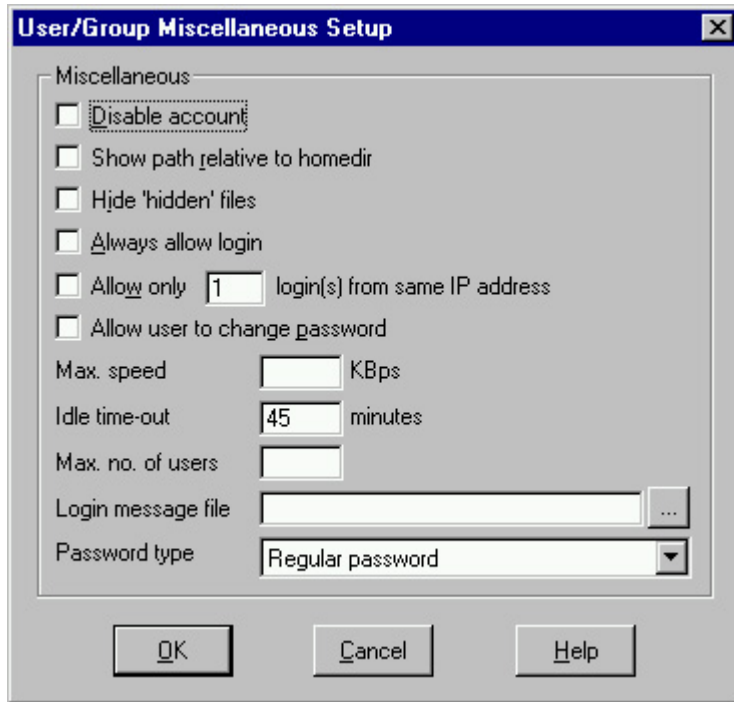
Delete is self explanatory.

Execute is something you should NEVER CHECK
List should always be checked.
Make should only be checked for those allowed to upload.
Remove for those you trust to be able to delete.

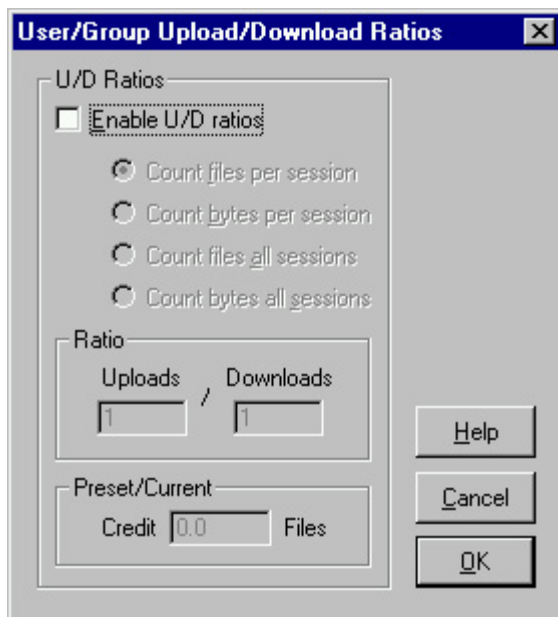
Use the inherit box so you don't have to assign permissions to all the sub directories.



By hitting the MISC button you get the dialog below.
The check boxes are self explanatory. You can create a special login message for each person if you wish.
I would set the max users to at least 2 in case the user gets disconnected and the ghost is still hanging on.
Always set an idle time out.



This should be disabled for our channel.



This also should be disabled.

