



## The Path to Golgotha

### Fourteen original artworks depict scenes from Christ's passion for Good Friday Worship at St. John's in Ashwaubenon

By Jackie Burkat

**F**ourteen panels of original art depicting "The Path to Golgotha" were the focus of the 2004 Good Friday worship service at St. John Lutheran Church in Ashwaubenon. The panels began with "Jesus is Condemned to Death" and ended with "The Body of Jesus is Laid in the Tomb—Blanket of Sorrow."

Nine members of the congregation and a Sunday school class created the six foot by three foot panels. Some of the artists created more than one. The media used by the artists included oil pastels, chalk pastels, acrylic paint, watercolor paint, stitchery, glass, three dimensional soft sculpture, woven paper and mixed media collage.

Both beginning and experienced artists shared their creative gifts with the congregation. They described the inspiration for their artwork in their own words. Their statements were distributed with the worship bulletin. Each had a year to complete the panel.

During the worship service, each panel was displayed in succession on an easel in front of the altar as a scripture lesson, responsive reading and music focused a meditation on the artwork and the scene it depicted. As the panels were removed from the altar, they were placed in the narthex on

**"JESUS IS CONDEMNED TO DEATH,"** mixed media collage by Sunday school students. Jesus, at the moment he is condemned to die on the cross, is portrayed standing in front of those he died for, people of every time and race.

black draped easels, highlighted with spotlights. As members of the congregation left the darkened church at the close of the service, they filed in silence past the panels.

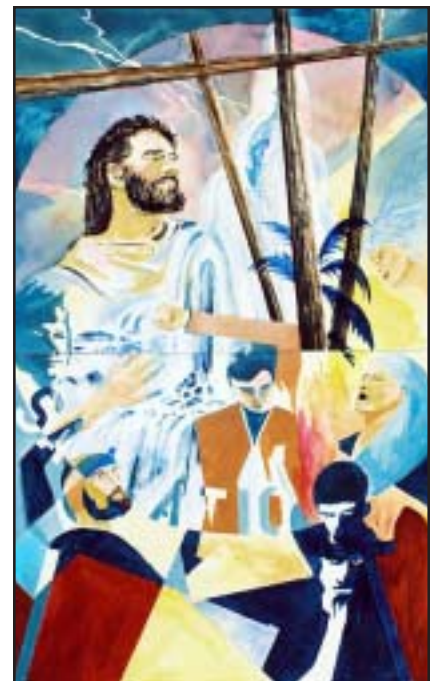
After worship, the artwork was moved to the fellowship hall for further viewing on Easter morning.

The art works were created by Robert E. Olson, Karl Kralapp, Birgit Ruotsala, Molly Brewster, Gloria Boerst, Robert Kralapp, Brie Andersen.



Shelley Berndt, Margit Olson and the Abraham's Artworks rotation Sunday school class.

*Editor's notes: All fourteen artworks are reproduced in this edition of "The Lutheran" along with some excerpts from the artist's statements. Though the artworks have been cropped to fit the format of this publication, every effort was made to preserve the scale and design elements of the originals. To view the artwork in full color, visit [www.geocities.com/lawphive](http://www.geocities.com/lawphive) and follow the link to "The Path to Golgotha."*



**"JESUS BEARS HIS CROSS"** by Robert E. Olson. "I placed the cross as the focal point. . . because our Savior died on the cross. . . that is why the cross must be at the heart of our salvation."

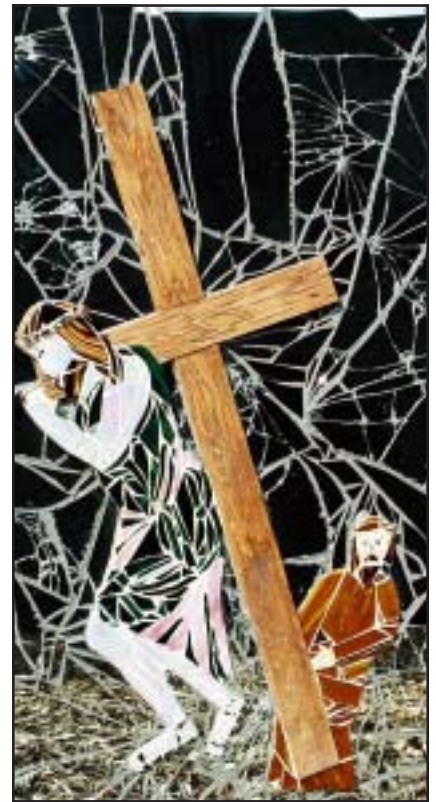




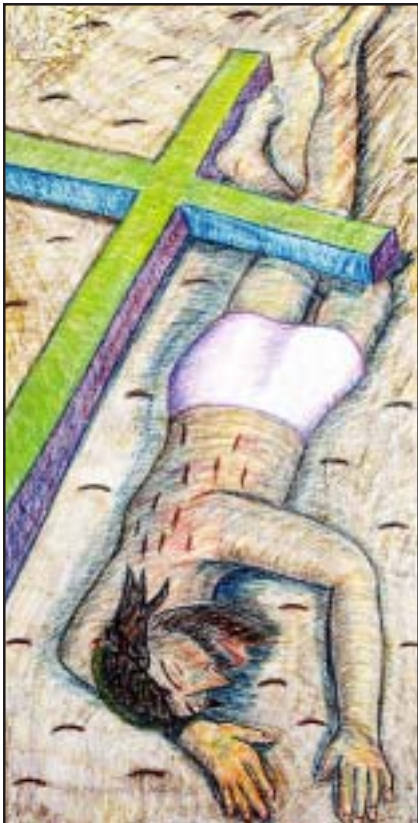
“FALLS FOR THE FIRST TIME” by Karl Kralaap. “It was the Lord who took my hand and guided me, enabling me to complete the works.”



“JESUS MEETS HIS MOTHER” by Birgit Ruotsala. “The last days must have been horrible—seeing her precious son go through all he had to go through.”



“SIMON OF CYRENE HELPS CARRY JESUS’ CROSS—THE BROKENNESS OF SIN” by Molly Brewster. “This panel was a form of prayer for me.”



“JESUS FALLS A THIRD TIME” by Karl Kralaap. “Working on these pieces became a blessing.”



“JESUS IS STRIPPED OF HIS CLOTHES” by Brie Andersen. This work was inspired by stained glass.



“JESUS IS NAILED TO THE TREE” by Shelly Berndt. “The hardest part was . . . to put (the images) on canvas.”





“A WOMAN WIPES THE FACE OF JESUS” by Gloria Boerst. “Only one woman stepped up to comfort Jesus,” others were consumed by emotions.



“JESUS FALLS A SECOND TIME” by Karl Kralaap. Distorted shapes depict “the struggle/suffering of Christ.”



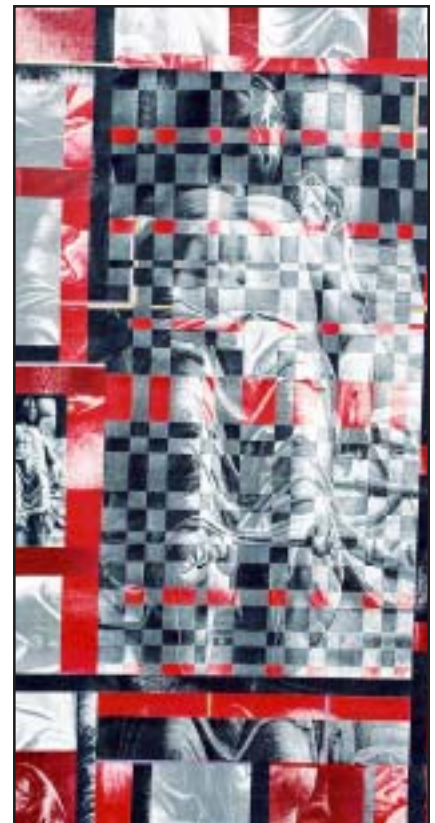
“JESUS REBUKES THE WOMEN OF JERUSALEM” by Robert Kralaap.



“JESUS DIES UPON THE CROSS” by Gloria Boerst. “His word was fulfilled.”



“JESUS IS GIVEN TO HIS MOTHER” by Margit Olson. It is “about the love Jesus and his mother shared.”



“THE BODY OF JESUS IS LAID IN THE TOMB—BLANKET OF SORROW” by Birgit Ruotsala.