



2448, 2450, 2452, 2454, 2456 Prospector Way, Langford BC
\$1,000,000 for 5 lots plus GST

From door to shore in less than 5 minutes. Walk down to beautiful Florence Lake and enjoy a lakeside stroll. Come back to the site of your future house and absorb the mountain views over a cup of coffee. Connect with nature while at home, or go shopping (only 5 minutes away).

These lots will permit a good size home, and are some of the cheapest available in Langford. These non-strata lots are listed below assessment values, and are for single family residence.

Addresses to sq ft/assessments (measurements approx)

Lot 2448	3,686 sq ft	\$205,000
Lot 2450	3,175 sq ft	\$205,000
Lot 2452	3,145 sq ft	\$203,000
Lot 2454	3,683 sq ft	\$203,000
Lot 2456	3,858 sq ft	\$208,000

Contact Information:
Randy Tait
Phone: 1-250-619-5541
Email: randyjamestait@gmail.com









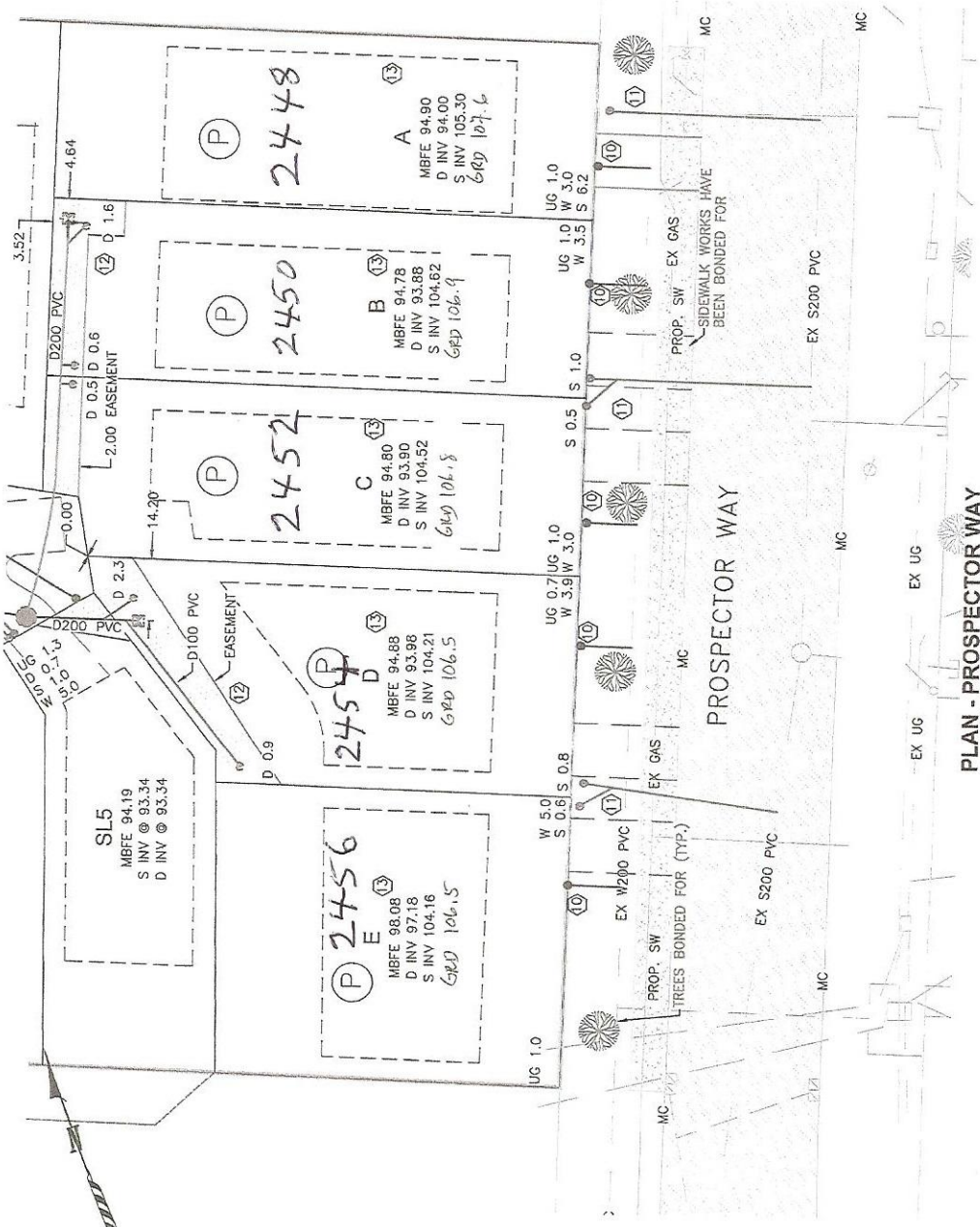






1:250

(P) = PUMP LOWER FLOOR TO UPPER FLOOR AND GRAVITY TO STREET



PLAN - PROSPECTOR WAY

CORIX

GRD ≈ 105.0