

Welcome to

Terris Touch

Creative Designs

Where Creativity Knows no limits

You are about to view my digital portfolio for
course G230 WA - Digital Illustration
Instructor: Nancy Zeller

“Apple Slice”

This illustration is the first apple I drew for the course. I was not very familiar with Illustrator at this point yet and I wanted to create a realistic apple. To do this I drew the overall shape and then drew in blocks of color to represent the various shades and tones found in the apples peeling.

Next I drew in various shapes to represent the subtle, to sometimes dramatic, variations within the inner apple. I finished this drawing with a shadow beneath the apple and apple slice as well as the leaf and stem.





“Sliced Apple”

For the second apple during the course, I wanted to demonstrate an even more realistic look by adding gradients to help the colors blend more smoothly. To soften some of the abrupt edges, I added a feather effect to give a slightly more transitional feel to those areas.

Although some areas on the apple still seem to have a harsh edge, these blocks of color help to give the apple it's overall realism.

In finishing this piece I added a drop shadow to help create the illusion of a three dimensional image.



“An Apple A Day...”

During week 3, I wanted to experiment by adding text to my apple. I also used the Live Trace feature which helped to produce the wonderful realism in the stem and leaves. I added a light flare to the apple to help give a more dramatic outdoor light effect.

I used the pen tool to create the phrase, “An Apple A Day...” in order to add a gradient for an extra visual appeal. I then drew in another apple which I included the remainder of the phrase, “Keeps the Doctor Away.” This text is placed on a path. I added the heart illustration to help symbolize the healthy aspect of the fruit.



“Reflections of Granny Smith”

Week four brought yet another level of realism to my apple illustrations. This week I wanted to illustrate something with a dynamic appeal. After drawing the three apples, I used a combination of gradients and color blends to create the look of a smooth surface for the peelings. I wanted this illustration to demonstrate a nice use of contrast by allowing shadows and highlights to actually bring this piece to life. I used a black background to push the level of contrast to be seen much more easily. I wanted to show a reflection of the apples by creating the illusion of a highly reflective surface. The soft and subtle reflections helps give this composition a wonderful yet dynamic style and appeal.



“The Un-peeling”

For my final apple for the course, I wanted to retain my style of realism yet add a twist to create a fun cartoon looking character. For the initial apple I used gradients and color blends to create the foundation. I added texture to help create an even more realistic look to the inner apple.

Next, I created the face, arms, and legs. I decided to add a leaf skirt which was made of the leaves I originally drew by the stem of the apple. I used the gradient and color blend tools on all of these shapes. Adding a drop shadow helped to give this piece a three dimensional quality. To finish the look, I added a humorous phrase to add that one last special touch.

“Moonlight Love”

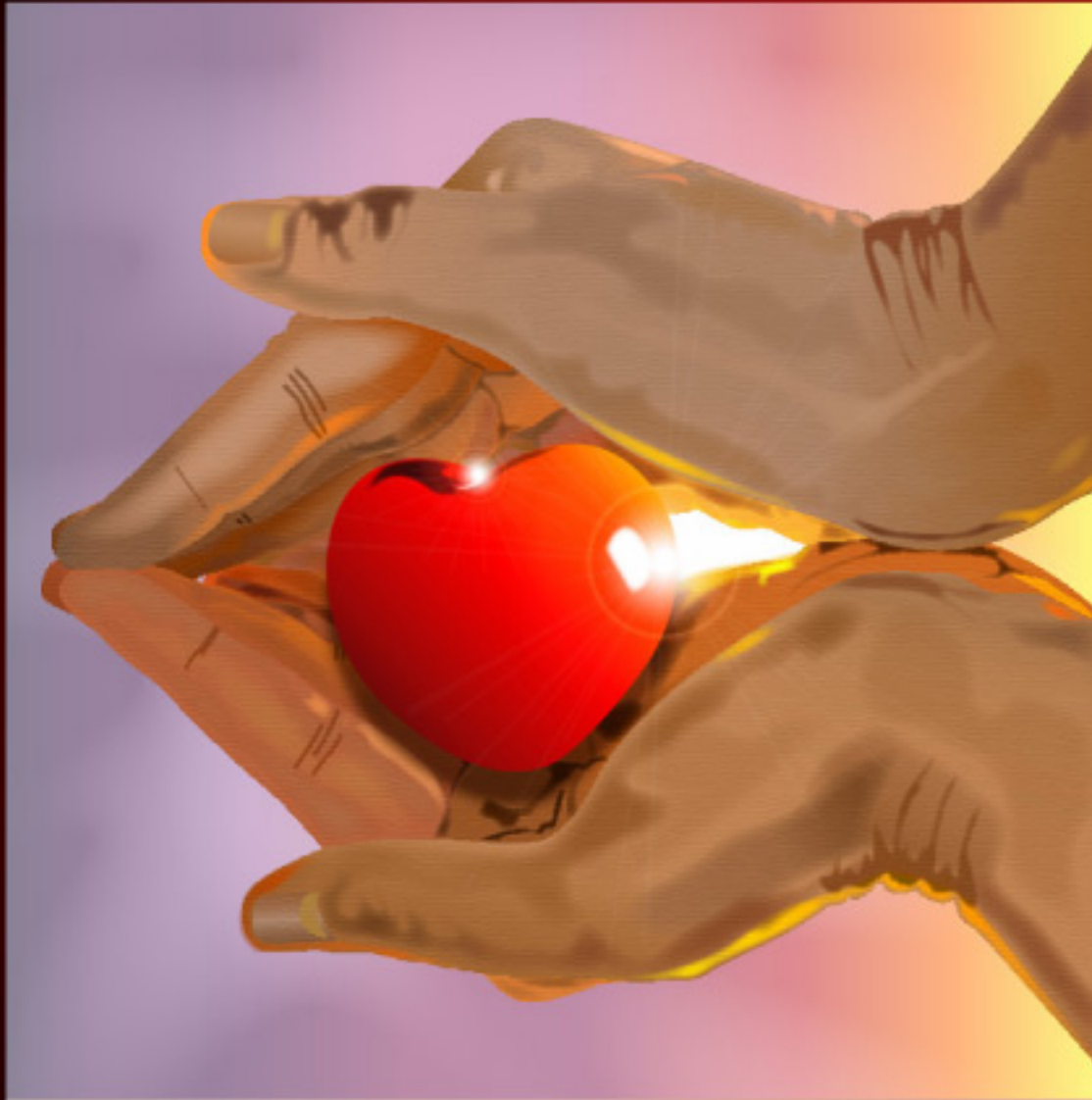
This spot illustration was the first of three which was created to interact with a poem which I had written. The idea was to create the spot illustrations after choosing the body of text.

I wanted to create a sense of symbolism to represent portions of the poem. The two hearts represent the strong feelings of love between the two people in the story. I created the hearts with the gradient tool while trying to give them the illusion of a three dimensional appearance. I added a reflection in the water to help indicate that the lover’s feelings reflect for the world to see.

I wanted the moon to indicate it’s craters. To do this, I applied several texture affects to the different shapes making up the moon. I also wanted the sky to have that very soft dreamy look. I drew the clouds and applied gradients and then applied the feather effect.

The overall look has a very delicate feel which portrays the intended meaning quite well.





“Protecting Love”

The second of three spot illustrations, intended for use for an article layout, represents how we try to protect a love we’ve found. I created the hands and the heart with various gradients and shapes. I added a flare to the edge of the heart to represent the light and life which connects to and shines from all around this love. I wanted to give this illustration a sense of realism along with the symbolism it shows.

I wanted to create a sense of depth and three dimensional space. The light shining through the hands helps to increase this effect.



“Hallway of Despair”

For the last of three spot illustrations I wanted to symbolize the loneliness and pain that is associated with the loss of love. The poem I wrote ends with this emotion so I drew a figure walking down a long hallway. The figure has their back towards the viewer to help the viewer be able to associate this faceless figure as being anyone, even themselves. I used gradients to create the color variations which flow throughout the hall way. I applied texture to the sidewalk and the grass area.

I wanted to show that there can be a happy ending by including a light at the end of the tunnel. This light helps to represent that if you keep going, and do not give up, that you can reach that light and find some peace. I feel that the overall effects applied to the illustration works well to convey the intended message.

REFLECTIONS REFLECTIONS

by Terri Moonhouse
© July 2006, Terri Moonhouse

The innocence of love
Once precious and abundant,
Danced within her life
With sweetness all around.

Candied kisses full of spice
Tender moments galore,
Moonlit walks together
Across the ocean shore.

Whispers of tomorrow
With forever near in sight,
Embraced within his touch
Heaven's guiding light.

Passion and temptation
What's a heart to do?
Emotions strong as steel
A fearless 'I Love You.'



Jealousy and deceit
Grew from those around,
Driving a wedge between
The love that they had found.

Shattered within a moment
What they had fought to keep,
The life of two united
Heed a lover's weep.

Fate can be so cruel
Turn time against the heart,
The memory becomes enslaved
It tears a life apart.

Softly whisper in my ear
The words that I once knew,
Echoes of a dying dream
And promises thought true.



Feelings once embraced
Have all but gone away,
Emptiness grows inside
A heart has been betrayed.

Who am I without you
How did it all go wrong?
I've tried all I can
To find where I belong.

I'm lost inside my head
Bound behind these walls,
Cast away, forgotten
Haunting these lonely halls.



Who is this face I see
Lost inside my head,
Drowning and alone
What was it that he said?

A prison of her making
Too stubborn to just let go,
Embracing all the pain
The guilt remains a flow.

My eyes have cried a river
That carried my soul away,
Reflections of myself
Are all that's left today.

“Reflections”

The last piece I've included is the layout incorporating the previous three spot illustrations. I wanted to use the relating text around the proper illustration it helps to represent. I thought that the layout of the text should flow nicely with the illustrations yet still show some style. I placed the text around the hands illustration in a way that it seems to follow their shape. This helps to add an appealing and creative typographic effect to the layout.