

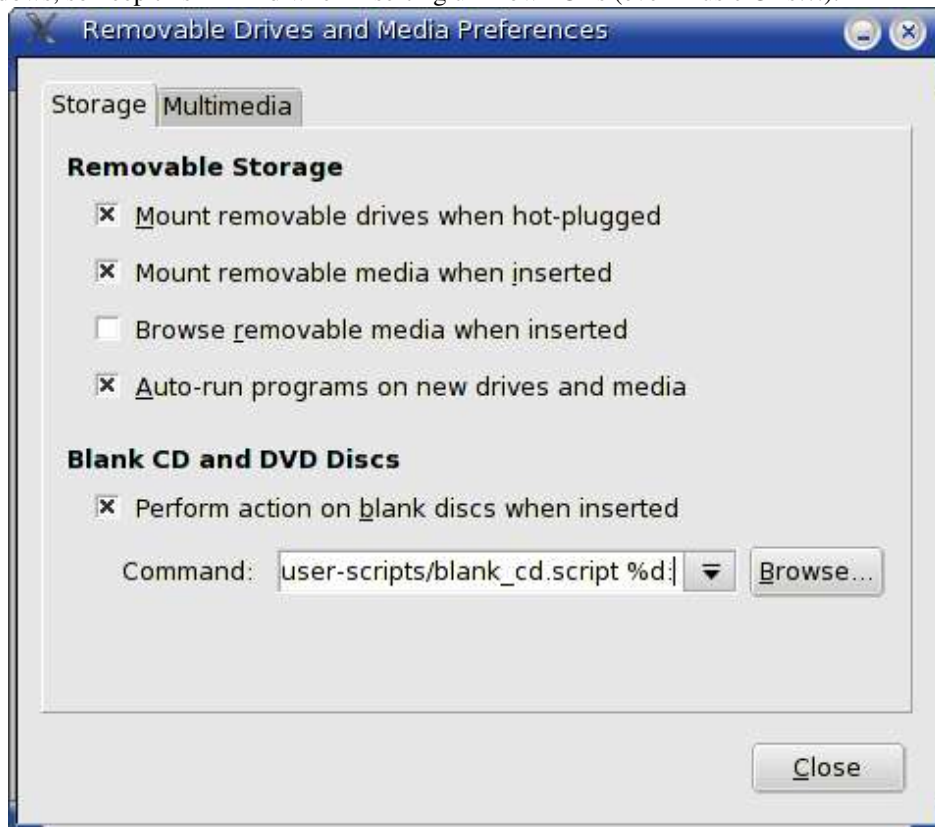
Removable Drives and Media Preferences

One of the relatively newest features in Linux desktops today is the ability to have an automatic action when the user inserts a blank CD, a removable drive, or a USB key drive. For simple administration purposes, a GUI is provided under the system configuration menu to start a script when something like this happens. Let's explore this a bit.

First, let's bring up the "Removable Drives and Media Preferences" window by clicking on K-menu > System > Configuration > Hardware > Removable Storage.



The first tab, **Storage**, gives you some basic options when removable storage devices are hot-plugged or inserted. Note "Auto-run...". This has proven to be a bit of a security nightmare in a few situations in Windows, so keep this in mind when inserting unknown CDs (even music CDs!!!).



Once you've read over the options, notice the command box under "Blank CD and DVD Discs". This gives the administrator the ability to point to a script and run a program or call some function. Here is what the "Blank CD and DVD Discs" script says:

```
#!/bin/sh
#-----
# Project      : Mandrakelinux
# Module       : user-scripts
# File         : blank_cd.script
# Version      : $Id: blank_cd.script,v 1.8 2004/08/18 22:59:41
flepiéd Exp $
# Author       : Frederic Lepied
# Created On   : Fri Jan 30 17:02:00 2004
# Purpose      : lanch a CD burner when a blank CD is inserted
#-----

. /usr/share/dynamic/functions.script

if under_gnome; then
    [ -x /usr/bin/nautilus-cd-burner ] && launch nautilus --no-
desktop --browser burn:
    launch gtoaster
fi

if [ ! $(/sbin/pidof k3b) ] ; then
    launch k3b
    [ -x /usr/bin/nautilus-cd-burner ] && launch nautilus --no-
desktop --browser burn:
    launch xcdroast
    launch gcombust
    launch gtoaster
    launch eroaster
    echo "No application to burn a blank CD"
fi

# blank_cd.script ends here
```

I won't go into great depth for this tutorial, but the script does try to launch some CD burning application when called. Therefore, once you have dropped a blank CD in your burner, this script will be called and the first burning application it finds will be launched.

The next tab, **Multimedia**, handles if and how to play a music CD and a DVD, and if and how to import pictures when a digital camera has been plugged in.



These are handled the same way as the first tab. Once one of these events are noticed, the appropriate script is launched which handles running an application or whatever else is deemed necessary. If an administrator is adept in scripting, this can be a tremendously powerful opportunity to make the Linux desktop even more user-friendly.

Although this doesn't go into great depth, this is a good jumping point. Learn scripting and try your hand at removable storage and media. Just be sure to save a copy of the original script if you decide to poke around in the existing script. Enjoy!