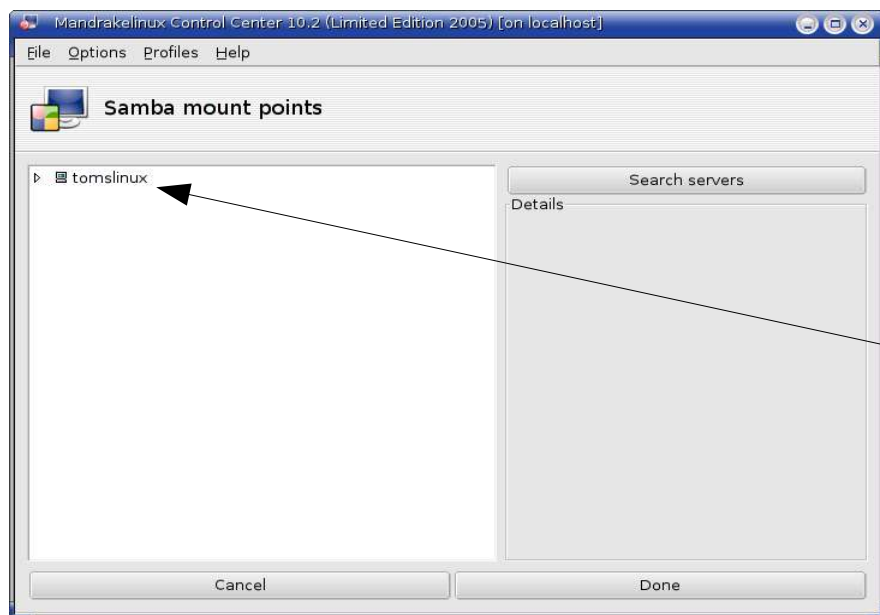
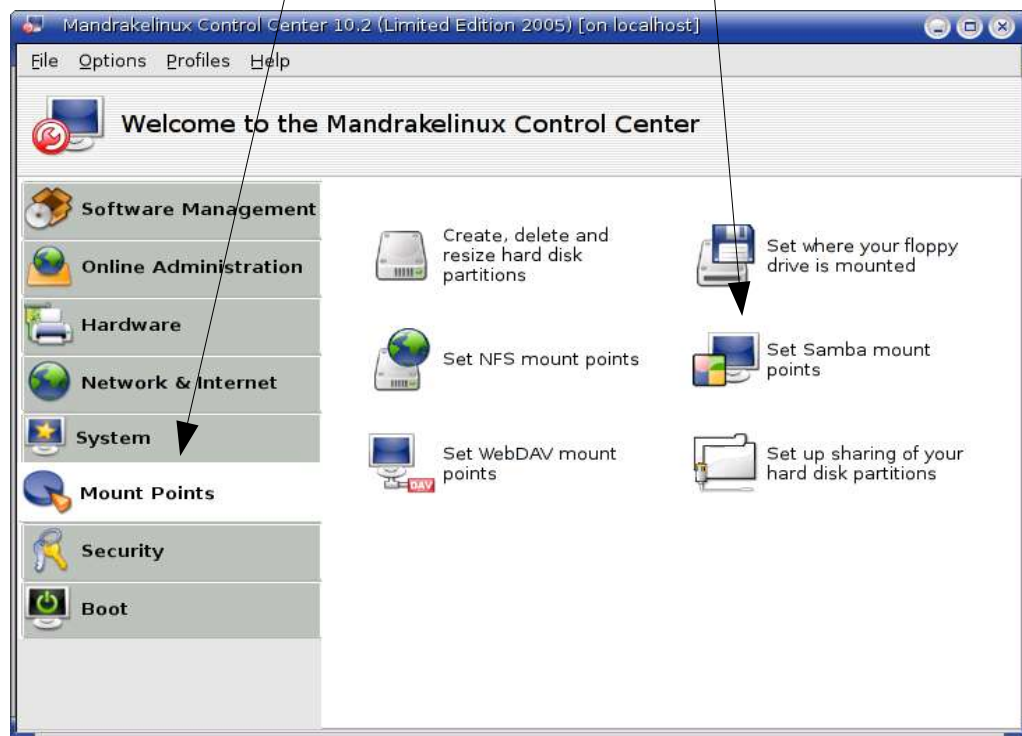


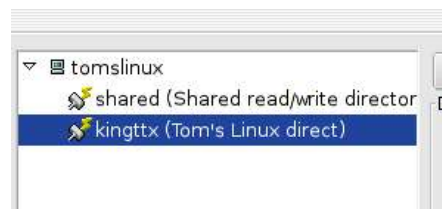
This document assumes several things. First, you have a Windows share or a Linux Samba share that requires a user name and password and is already set up on your network. Also, this assumes you have administrative rights on your local Mandriva computer.

First, open the “Configure your Computer” application, which will actually open the Mandrakelinux Control Center. Select “Mount Points”, then click on “Set Samba mount points”.

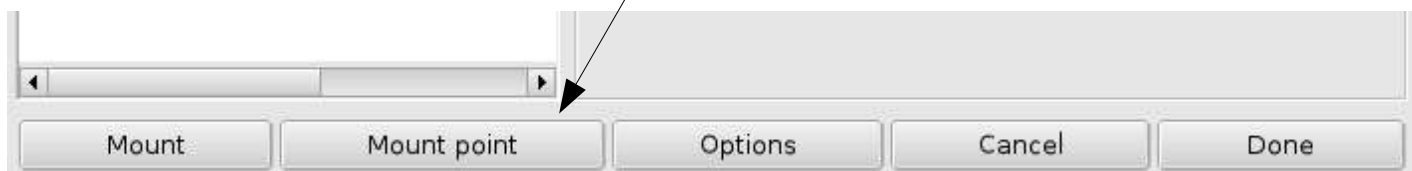


This should bring up a listing of all Windows or Samba servers found on your network. If it does not, you'll need to be sure your network is set up correctly. You can try pressing “Search Servers”.

Expand the server you want to mount onto your local computer. This will bring down all browseable shares.

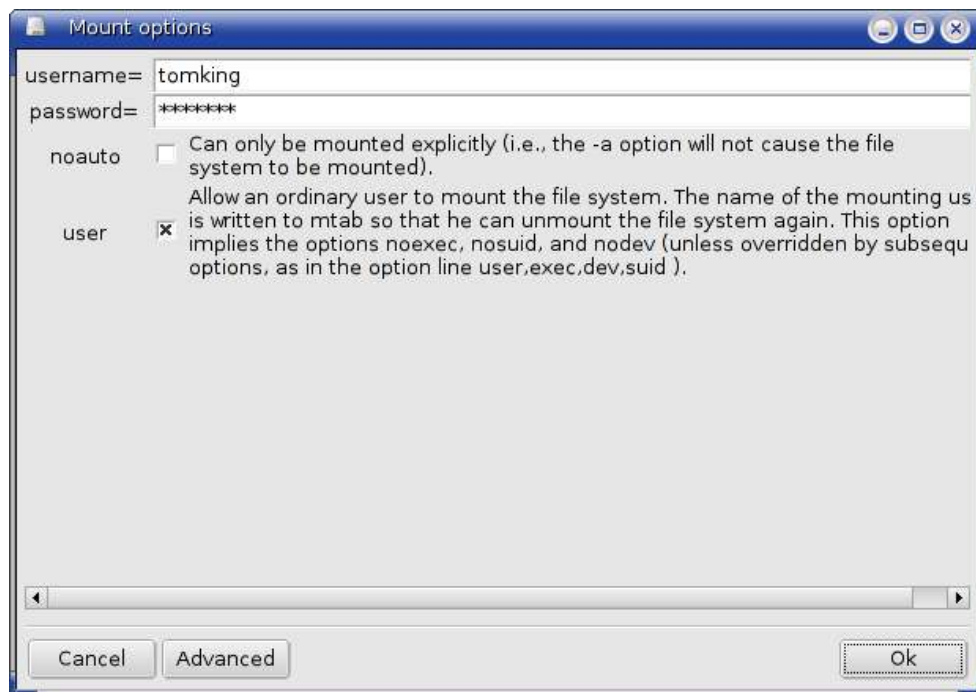


Highlight the share you want then press “Mount Point”, which will only show after you select the share.





Select a location in the drop-down box or type in a mount location. This will need to be an existing directory that is empty. You may also want to check permissions on this directory to be sure all users on your computer have the ability to access this directory. Press “Ok”



Back on the Control Center, press “Options”. Here, you will place in the username, password, and any other options required to access the remote share. NOTE: I have not been able to successfully mount the “Shared” share using this tool since it allows anonymous login with no password. The server still asks for a password but a simple enter completes the mount. This tool simply hangs in this case. You'll note that I have “user” checked off. Depending on your network environment, you may or may not want this. This is automatically mounted on startup for me, but I don't have to be root in order to mount the share in case I need to at some point.

Back on the Control Center, you can test the setup by clicking “Mount”. If all goes well, the icon will change to show the share is mounted and ready to be accessed.



Press “Done”. A dialog box will ask if you want the changes to be written to fstab. Click “Yes” or “Ok”. Some possible issues causing a failed mount could be a bad username or bad password, the permissions on the mount directory (your local directory) might be off (I usually 'chmod 770 /mnt/sharename' before trying to set up the mount), or the setup on the server might not match what you are trying to do. Check the Samba documentation and the Samba config file on the Samba server.. OK, I do cheat on the Samba server by using “webmin”. ☺



One really nice thing this does is place an icon for each remote share configured this way onto your desktop automatically. Double-clicking the icon will bring up the file manager and the remote share mounted.