



This website contains hundreds of articles and lists that have been put together by family and local history enthusiasts. You will find random lists such as London brewers and publicans from 1830, names on a First World War memorial in a West Yorkshire village or marriage details from 1780 Durham.

There is no guarantee that you will find any information about your family but it is worth searching just in case - see the example on page 4. What you might find is some background detail that will enable you to search further using websites such as Google search engine or at a local archive.

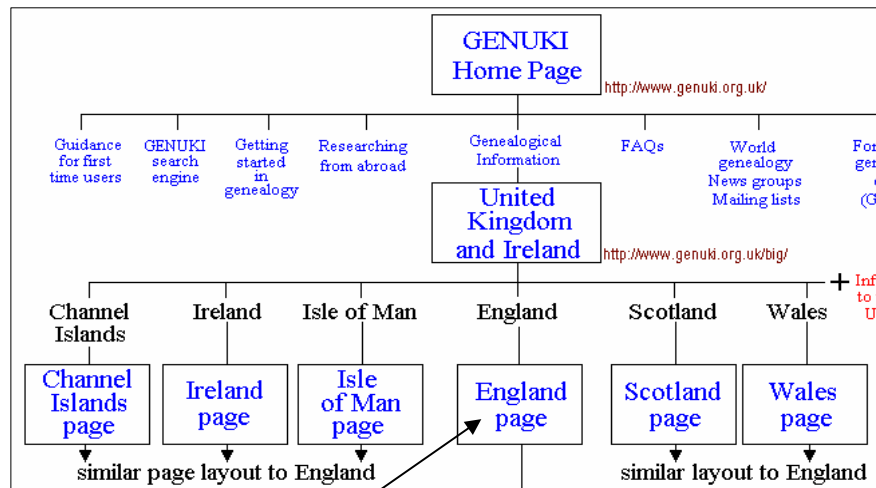
It is worth starting with the geographic area that you are searching and then moving onto a more detailed search for relatives, occupations or villages.

Area Information - Choose a country, county, parish

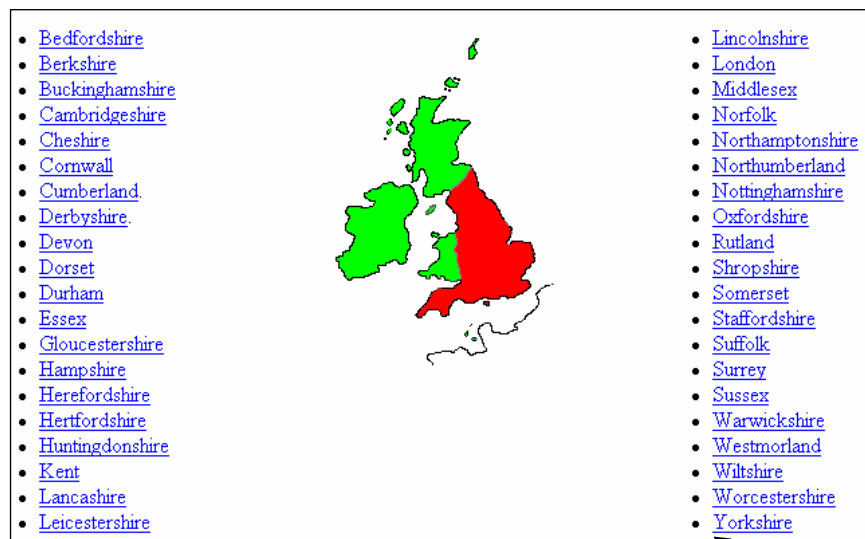
Click on Contents and Search



Click on the part of the United Kingdom that you would like to search:



You will then be presented with a map of England showing its counties :



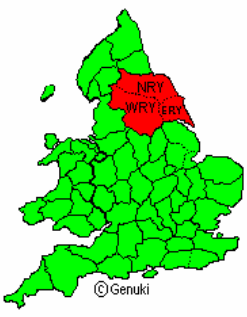
Click on the name of the county you would like to look at.

The first part of the county information describes where the area lies and how it is made up. Beneath that is a list of headings showing how the county information is laid out.

Notice that this page has a very small scroll bar on the right of the screen. This means that it is a very long page. It is easy to use this index at the top of the page to click on the links that look most useful.

INFORMATION RELATED TO ALL OF YORKSHIRE

- [Archives and Libraries](#)
 - [Bibliography](#)
 - [Cemeteries](#)
 - [Census](#)
 - [Church Records](#)
 - [Civil Registration](#)
- [Description and Travel](#)
 - [Gazetteers](#)
 - [Genealogy](#)
 - [History](#)
- [Land and property](#)
- [Language and languages](#)



- [Maps](#)
- [Military Records](#)
- [Newspapers](#)
 - [Nobility](#)
- [Occupations](#)
- [Officials and Employees](#)
- [Poorhouses, Poor Law, etc.](#)
- [Probate Records](#)
- [The Ridings](#)
 - [Societies](#)
- **[Towns and parishes](#)**
 - [Taxation](#)
 - [Visitations](#)

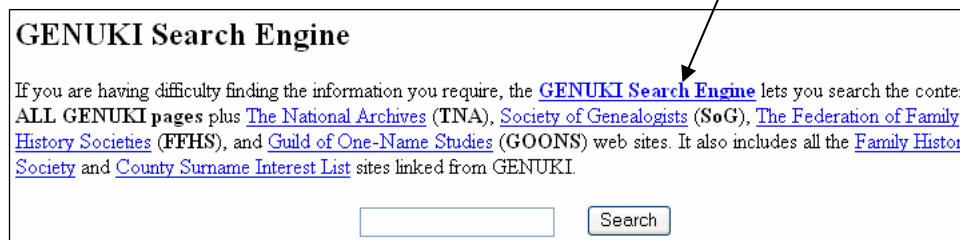
You may be directed to different websites by clicking on some of the links. Don't forget to click on the BACK button at the top of the screen to get back to the Genuki site.

The Genuki Search Engine

Click on Contents and Search



Scroll down the page past the country information to where the main text begins. Click on Genuki Search Engine:



You will then see the "search criteria box" which you use in a similar way to search engines like Google.

GENUKI
UK & Ireland Genealogy

Search GENUKI plus

This form lets you search the contents of all the GENUKI pages and more ... The search of web sites of the National Archives, the Society of Genealogists and Federation of Family History Societies, all the majority of Family History Society and County Surname Interest List sites.

Search for words: Search

Search method: Search for all of the above words

Search results: Just the title of the pages found

Nº results/page: 20 Sorted by search ranking

Please Note:

- Letter case, numbers and words of only one or two characters are ignored.
- Searching for a phrase (use double quotes) seems to be working but please don't report

Click into the **Search for Words** box and type what you are searching for. This could be a surname together with a place name, an occupation, a place name - whatever you think you might find information about on Genuki.

Then click on **Search**.

The results of your search will then be listed below:

Search results for: reffold and greenwich

You can refine your search:

Search for words:

Search method:

Search results:

N^o results/page: Sorted by

Documents 1 - 3 of 3 matches. More ★'s indicate a better match.

★★★★ 1. [Greenwich Land Tax Assessments 1830](#)

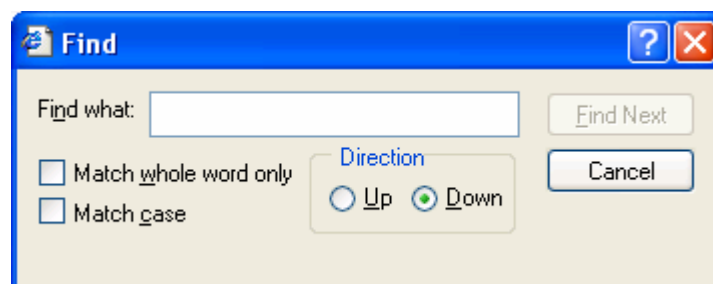
★★★★ 2. [GENUKI: St Catherine's Marriages Indexes](#)

★ 3. [Pubs and Brewers 1832-4](#)

Click on the blue, underlined text (the link) to open the page that contains the information you typed. It may be a very long page. To find the information quickly you can use the "Find on this Page" option.

Find on this Page

1. Open the page
2. At the top of the screen click on **Edit**
3. Click on **Find on this Page**
4. Click into the **Find what:** box and type at least one of the things you were looking for eg. Reffold in this example
5. Click on **Find Next**




OSBOURNE Wm.	SUN	Wood Wharf
PRESTON Thos.	Brown OLD TORBAY	Fisher Lane
REEVE Francis	WHEAT SHEAF	Church Street
REFFOLD Wm.	BARLEY MOW	Royal Hill
ROBINSON Wm.	PRINCE OF ORANGE	Greenwich Road
SANDWELL Richd.	RED LION	Greenwich Road
SAUNDERS Stephen	DUKE OF KENT	Royal Hill Row
SCUDDER Robert	ROSE & CROWN	Blackheath Road

The word you were searching for appears highlighted in blue (it is not a link).

You could then use this information to search on Google for the Barley Mow pub in Royal Hill, Greenwich to see if it is still there or to see if there is a picture of it on the Internet.

Address  http://www.fancyapint.com/main_site/thepubs/pub203.htm

Barley Mow



address: 89 Royal Hill
SE10 8SE

location: Greenwich

rating:

clientele:

It's still there - my great, great, great grandfather's pub!

