

PROBLEM:

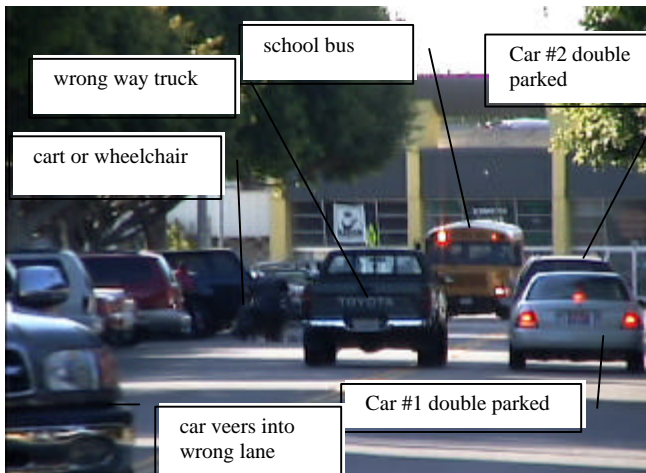
- Students are endangered DAILY going to & from campus;
- 2 or 3 residential blocks try to "absorb" all students who drive;
- Lack of student parking at SAMO has created a safety hazard;



This car accident occurred in May 2003 at intersection of 9th & Michigan - 2 blocks from SAMO.



This car accident occurred at 8:00am on 11/13/03 at intersection of 9th & Michigan - 2 blocks from SAMO.



2 cars double parked on right, another car heads across lanes from lower left. Truck heads wrong way down 9th toward oncoming school bus.

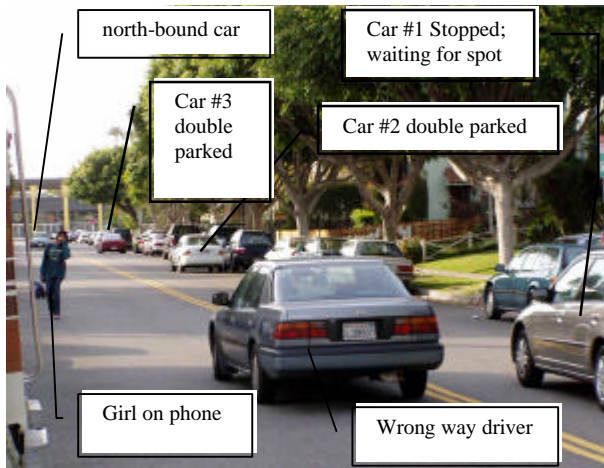
It's being ignored.

Just because you don't have to witness this problem everyday, does not mean there is no problem.

It also doesn't mean there is no solution.

Symptoms:

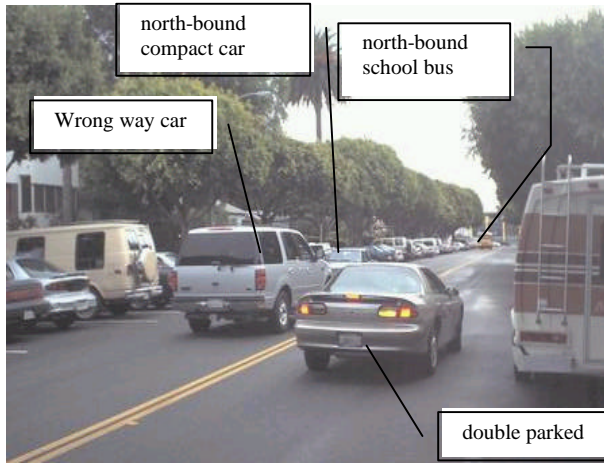
- Students are endangered (yet out of sight-out of mind)
- No supervision (late night, walking alone, especially girls).
- No rules / no enforcement (drugs, cutting class, speeding, dumping trash, etc).
- Pedestrian safety (vulnerable to getting hit by a car)
- Tempts unscrupulous behaviors both by and towards kids.
- Neighborhoods are severely impacted
- Extreme traffic
- Noise (honking, squealing, motors, radios)
- Unsupervised students may do illegal or disrespectful acts (drugs, cutting class, speeding, dumping trash, etc) which hurt neighborhood



All 3 cars are double parked (waiting for a parking spot), 4th car veers into oncoming traffic and towards a girl on the phone walking up the street.



Southbound car is stopped and double parked, waiting for a spot to open on east side of 9th; Another vehicles crosses double yellow lines to pass.



Car heading southbound on 9th is double parked waiting for a parking space; SUV heads into opposing lane to go around, & comes face to face with a car heading northbound. (Note school bus in distance heading northbound).

Who's problem is this ?

- Nobody thinks there is a parking or transportation problem at SAMO.
- Even if there is a problem, it's somebody else's problem;
- City thinks this is a "school" problem
- School thinks it's a city problem;
- Both of are somewhat correct. Neither can fix this problem alone.
- This problem belongs to both the school & the city.

It must be resolved by BOTH city and school working together

What other communities do

We are not unique; Other communities have faced similar problems, especially in California. Let's use the experience learned by other schools and cities to help define our options. One option is to create a Task Force or "Community Advisory Committee to help develop a long-term, comprehensive plan to alleviate pressure for parking by the high school" (Westfield High School, April 2003)

Task Force on SAMO Transportation

A group of concerned students, parents, residents and officials who will work on parking and transportation problems of SAMO and offer solutions.

Task Force Objective:

Find short & long term solutions to the parking and transportation problems of SAMO

- Identify various factors contributing to parking and transportation problems of SAMO
- Use multiple resources for resolving issues: bus, carpool, school policy, city regulations, etc
- Ways to provide adequate parking (on-street and off-street) for high school students within reasonable proximity of the high school;
- Opportunities for providing off-street parking;
- Fair methods for addressing residents' concerns about on-street parking;
- Fair methods for reducing the pressure for parking;
- ways to enforce any restrictions; and other issues of safety and feasibility;
- *Submit a comprehensive report to the School Board and City Council by June 1, 2004*