

DISCRETE NUMERICAL MODELING OF FLOW THROUGH POROUS FILTER MEDIA

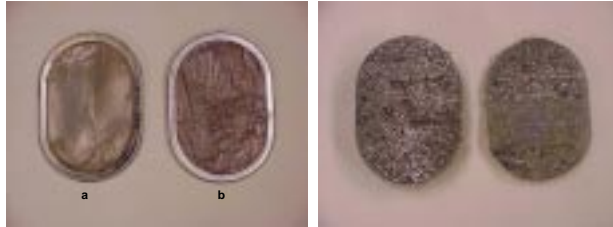
Breneria S. Travis MISSISSIPPI VALLEY STATE UNIVERSITY
 Nathan Smith CAMDEN HIGH SCHOOL
 Jonathan O'Dwyer UNIVERSITY OF LOUISIANA AT LAFAYETTE
 Julianna Camacho UNIVERSITY OF PUERTO RICO, MAYAGÜEZ CAMPUS

Introduction

Engineers utilize porous media to minimize the level of impurities in an extruded product. Impurities such as debris particles introduce voids that have a negative effect on the polymer's mechanical properties such as strength, toughness, and modulus, ultimately leading to failure. Debris particles also impede the melt flow through the porous media, reducing production rates and increasing production expenses. Because filtration is an important step in polymeric fiber and film processing, CAEFF developed a computer program that models polymer flow through a porous filter medium. The objective of this research project was to update the simulation's distribution functions and create a MATLAB® graphical user interface for the filtration model that calculates the dynamic debris deposition.

Mesh Screens and Filter Beds

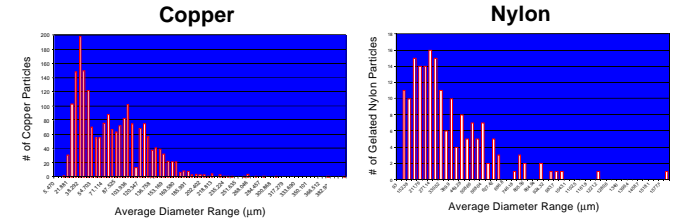
DuPont supplied porous filtration media that had been used in the production of polymeric materials for analysis.



Mesh screens with deposited copper; (a) 200x1400 + 50 or 12μ porosity, (b) 325 mesh + 50 or 43μ porosity.

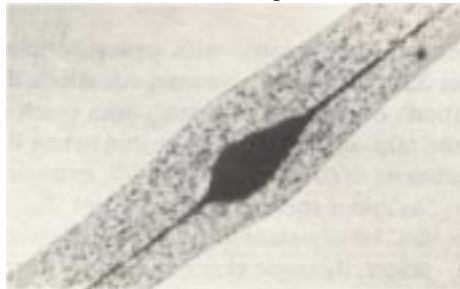
Cross sections of the steel powder commercial pack filter bed with deposited gelated nylon 6,6.

Particle Size Distribution Functions



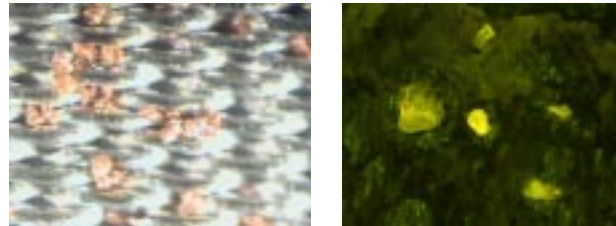
These graphs of the particle size distribution function show the number of particles of a given diameter, in microns.

Effect of Impurities



Flawed fiber with knot and agglomerated pigment. Ziabicki, *Fundamentals of Fibre Formation* (1976).

Particle Analysis



Microscopic analysis of the filtration media showed copper particles deposited in the mesh screens (left) and gelated nylon 6,6 particles deposited in the filter beds (right).

Graphical User Interface



The opening screen for the graphical user interface gives the title of the program. It also displays the date when the program is running.

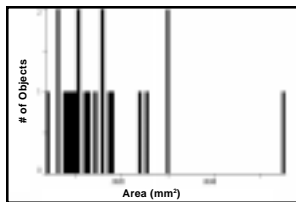
The input screen allows the user to specify all pertinent input variables to customize the filtration simulation.

Objectives

- Analyze selected areas of mesh screens for size and amount of copper particles
- Analyze filter beds for location, size, and amount of nylon particles
- Develop particle size distribution functions for copper and gelated nylon particles and a shape factor distribution function (using data obtained from analysis of mesh screens and filter beds) for incorporation into filter simulation program
- Use MATLAB® to build a graphical user interface for filter simulation program

Collected Data

Object Number	Area (mm²)	Perimeter (mm)	Shape Factor	Area (mm²)	Perimeter (mm)	Shape Factor	Area (mm²)	Perimeter (mm)	Shape Factor
1	0.0000	0.0000	0.0000	0.0000	0.0000	0.0000	0.0000	0.0000	0.0000
2	0.0000	0.0000	0.0000	0.0000	0.0000	0.0000	0.0000	0.0000	0.0000
3	0.0000	0.0000	0.0000	0.0000	0.0000	0.0000	0.0000	0.0000	0.0000
4	0.0000	0.0000	0.0000	0.0000	0.0000	0.0000	0.0000	0.0000	0.0000
5	0.0000	0.0000	0.0000	0.0000	0.0000	0.0000	0.0000	0.0000	0.0000
6	0.0000	0.0000	0.0000	0.0000	0.0000	0.0000	0.0000	0.0000	0.0000
7	0.0000	0.0000	0.0000	0.0000	0.0000	0.0000	0.0000	0.0000	0.0000
8	0.0000	0.0000	0.0000	0.0000	0.0000	0.0000	0.0000	0.0000	0.0000
9	0.0000	0.0000	0.0000	0.0000	0.0000	0.0000	0.0000	0.0000	0.0000
10	0.0000	0.0000	0.0000	0.0000	0.0000	0.0000	0.0000	0.0000	0.0000
11	0.0000	0.0000	0.0000	0.0000	0.0000	0.0000	0.0000	0.0000	0.0000
12	0.0000	0.0000	0.0000	0.0000	0.0000	0.0000	0.0000	0.0000	0.0000
13	0.0000	0.0000	0.0000	0.0000	0.0000	0.0000	0.0000	0.0000	0.0000
14	0.0000	0.0000	0.0000	0.0000	0.0000	0.0000	0.0000	0.0000	0.0000
15	0.0000	0.0000	0.0000	0.0000	0.0000	0.0000	0.0000	0.0000	0.0000
16	0.0000	0.0000	0.0000	0.0000	0.0000	0.0000	0.0000	0.0000	0.0000
17	0.0000	0.0000	0.0000	0.0000	0.0000	0.0000	0.0000	0.0000	0.0000
18	0.0000	0.0000	0.0000	0.0000	0.0000	0.0000	0.0000	0.0000	0.0000
19	0.0000	0.0000	0.0000	0.0000	0.0000	0.0000	0.0000	0.0000	0.0000
20	0.0000	0.0000	0.0000	0.0000	0.0000	0.0000	0.0000	0.0000	0.0000
21	0.0000	0.0000	0.0000	0.0000	0.0000	0.0000	0.0000	0.0000	0.0000
22	0.0000	0.0000	0.0000	0.0000	0.0000	0.0000	0.0000	0.0000	0.0000
23	0.0000	0.0000	0.0000	0.0000	0.0000	0.0000	0.0000	0.0000	0.0000
24	0.0000	0.0000	0.0000	0.0000	0.0000	0.0000	0.0000	0.0000	0.0000
25	0.0000	0.0000	0.0000	0.0000	0.0000	0.0000	0.0000	0.0000	0.0000
26	0.0000	0.0000	0.0000	0.0000	0.0000	0.0000	0.0000	0.0000	0.0000
27	0.0000	0.0000	0.0000	0.0000	0.0000	0.0000	0.0000	0.0000	0.0000
28	0.0000	0.0000	0.0000	0.0000	0.0000	0.0000	0.0000	0.0000	0.0000
29	0.0000	0.0000	0.0000	0.0000	0.0000	0.0000	0.0000	0.0000	0.0000
30	0.0000	0.0000	0.0000	0.0000	0.0000	0.0000	0.0000	0.0000	0.0000
31	0.0000	0.0000	0.0000	0.0000	0.0000	0.0000	0.0000	0.0000	0.0000
32	0.0000	0.0000	0.0000	0.0000	0.0000	0.0000	0.0000	0.0000	0.0000
33	0.0000	0.0000	0.0000	0.0000	0.0000	0.0000	0.0000	0.0000	0.0000
34	0.0000	0.0000	0.0000	0.0000	0.0000	0.0000	0.0000	0.0000	0.0000
35	0.0000	0.0000	0.0000	0.0000	0.0000	0.0000	0.0000	0.0000	0.0000
36	0.0000	0.0000	0.0000	0.0000	0.0000	0.0000	0.0000	0.0000	0.0000
37	0.0000	0.0000	0.0000	0.0000	0.0000	0.0000	0.0000	0.0000	0.0000
38	0.0000	0.0000	0.0000	0.0000	0.0000	0.0000	0.0000	0.0000	0.0000
39	0.0000	0.0000	0.0000	0.0000	0.0000	0.0000	0.0000	0.0000	0.0000
40	0.0000	0.0000	0.0000	0.0000	0.0000	0.0000	0.0000	0.0000	0.0000
41	0.0000	0.0000	0.0000	0.0000	0.0000	0.0000	0.0000	0.0000	0.0000
42	0.0000	0.0000	0.0000	0.0000	0.0000	0.0000	0.0000	0.0000	0.0000
43	0.0000	0.0000	0.0000	0.0000	0.0000	0.0000	0.0000	0.0000	0.0000
44	0.0000	0.0000	0.0000	0.0000	0.0000	0.0000	0.0000	0.0000	0.0000
45	0.0000	0.0000	0.0000	0.0000	0.0000	0.0000	0.0000	0.0000	0.0000
46	0.0000	0.0000	0.0000	0.0000	0.0000	0.0000	0.0000	0.0000	0.0000
47	0.0000	0.0000	0.0000	0.0000	0.0000	0.0000	0.0000	0.0000	0.0000
48	0.0000	0.0000	0.0000	0.0000	0.0000	0.0000	0.0000	0.0000	0.0000
49	0.0000	0.0000	0.0000	0.0000	0.0000	0.0000	0.0000	0.0000	0.0000
50	0.0000	0.0000	0.0000	0.0000	0.0000	0.0000	0.0000	0.0000	0.0000



ImagePro® software was used to determine the shape, size, and number of particles and to present the data in spreadsheets and histograms.

Conclusions

- The analysis of the mesh screens and filter beds proved that copper particles exist in large amounts within the polymer melt. The copper particles varied in both shape and size. It was determined that debris particle location within the filter bed depended on section depth. The gelated nylon particles were accumulated but in small amounts.
- The experimental data allowed the distribution functions to be fine-tuned, thus improving the accuracy of the model's calculations.
- The program's GUI makes it more user-friendly because researchers can customize the filtration simulation by prescribing processing conditions without having to use programming language.
- Additional research on the filter beds will likely result in further refinement of the debris particle distribution functions.

Acknowledgements: Bijan Seyfzadeh and David Zumbrennen (Clemson University); Roger Ross, Tina Kravetz, John Buzinkai, and Andy Ragone (DuPont). This work was supported primarily by the ERC Program of the National Science Foundation under Award # EEC 9731680.

