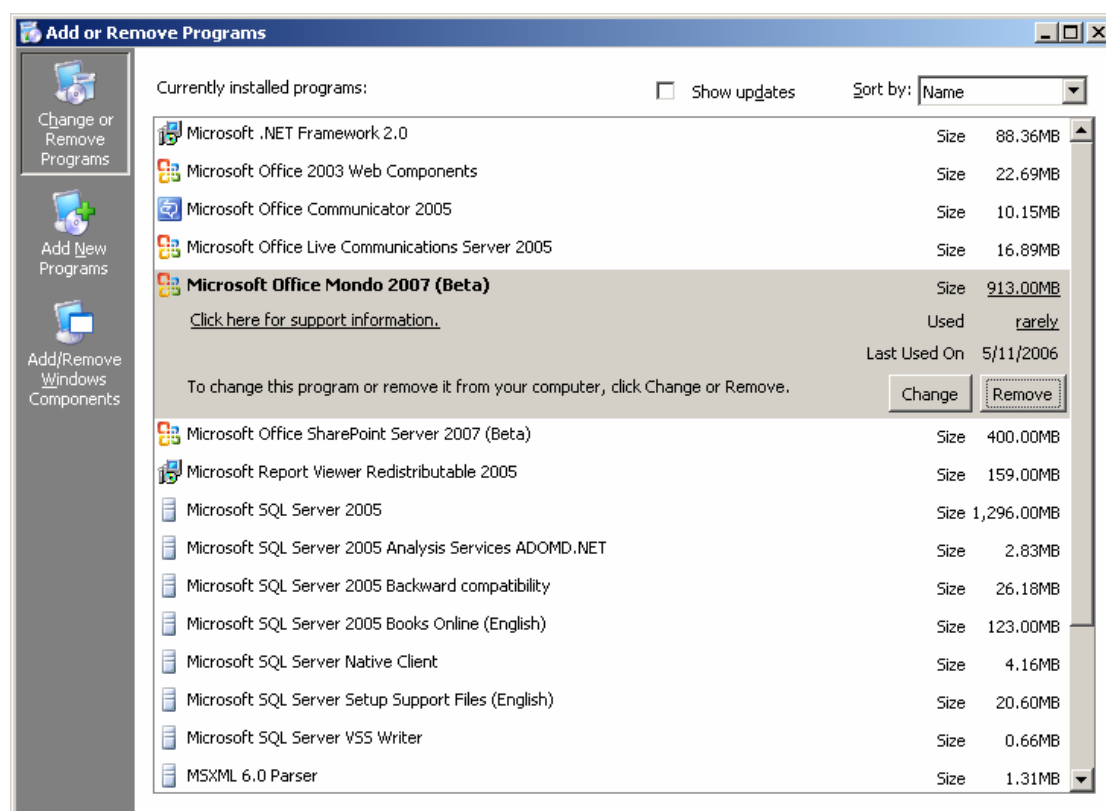


# Upgrading the Microsoft Virtual PC MOSS 2007 Image on the Technical DVD to Beta2 Technical Refresh

## Uninstalling Microsoft Office Mondo 2007 and Installing Microsoft Office 2007 (Beta)

### Step1: Uninstall Office Mondo 2007 (Beta)

1. Go to **Control Panel - Add and Remove Programs**.
2. Select Microsoft Office Mondo 2007 (Beta), click **Remove**.



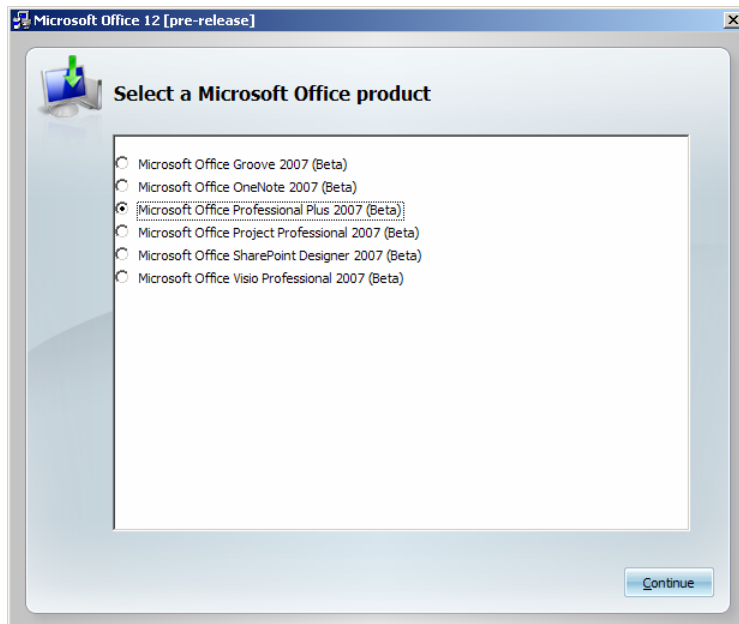
3. Click **Yes** when the dialog box pops up to remove Microsoft Mondo 2007.



Note: If you're prompted to restart. Restart.

## Step 2: Install Microsoft Office Professional 2007 (Beta)

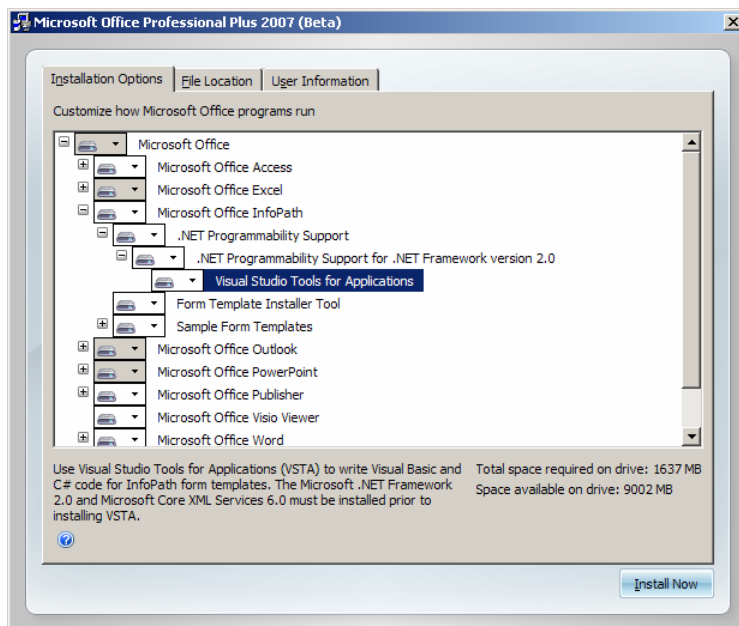
1. Run the Microsoft Office product DVD
2. Select Microsoft Office Professional Plus 2007 (Beta)



3. Enter the VL Product Key when prompted.
4. Accept the License Agreement.

Note: Steps 4 and 5 optional if you're after .NET Programmability Support for InfoPath.

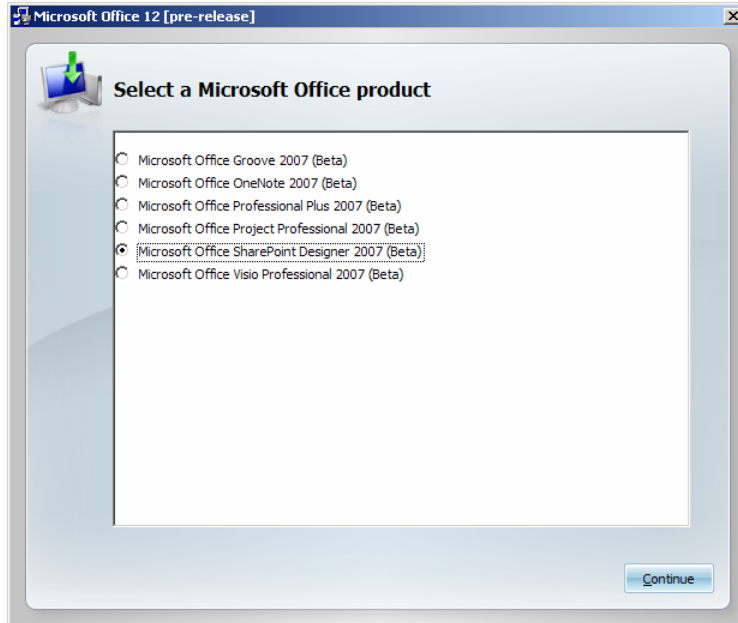
5. Click on **Customize**.
6. Select "**Run from Computer**" for Visual Studio Tools for Applications.



7. Click on **Install Now**.

### Step 3: Install Microsoft Office SharePoint Designer 2007 (Beta)

1. Run the Microsoft Office product DVD
2. Select Microsoft Office SharePoint Designer 2007 (Beta)



3. Enter the VL Product Key when prompted.
4. Accept the License Agreement.
5. Click on **Install Now**.

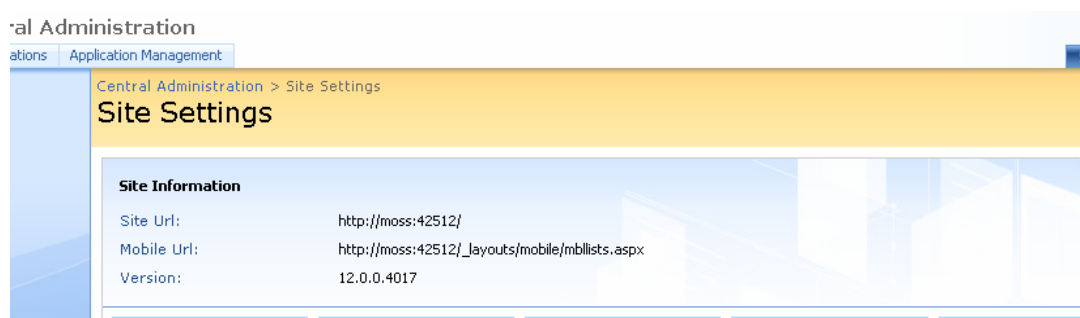
Note: Install all other Microsoft Office 2007 Beta Products before performing the upgrade. E.g. Microsoft Office Groove 2007, Microsoft Office Visio Professional 2007, etc.

## Updating MOSS 2007 Beta 2 to Beta 2 Technical Refresh

### Step 1: Confirm the Version of MOSS 2007

1. Go to SharePoint Central Administration
2. Click on **Site Actions**, select **Site Settings**.
3. Ensure the Version is 12.0.0.4017

Note: This can be checked under the Site Settings of any site.

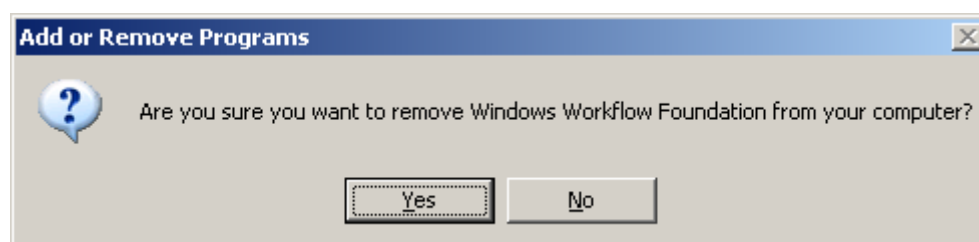


### Step 2: Uninstall Microsoft Windows Workflow Foundation Runtime Components Beta 2.2 (Build 3807.7)

1. Go to **Control Panel – Add and Remove Programs**.
2. Select Windows Workflow Foundation, click **Remove**.



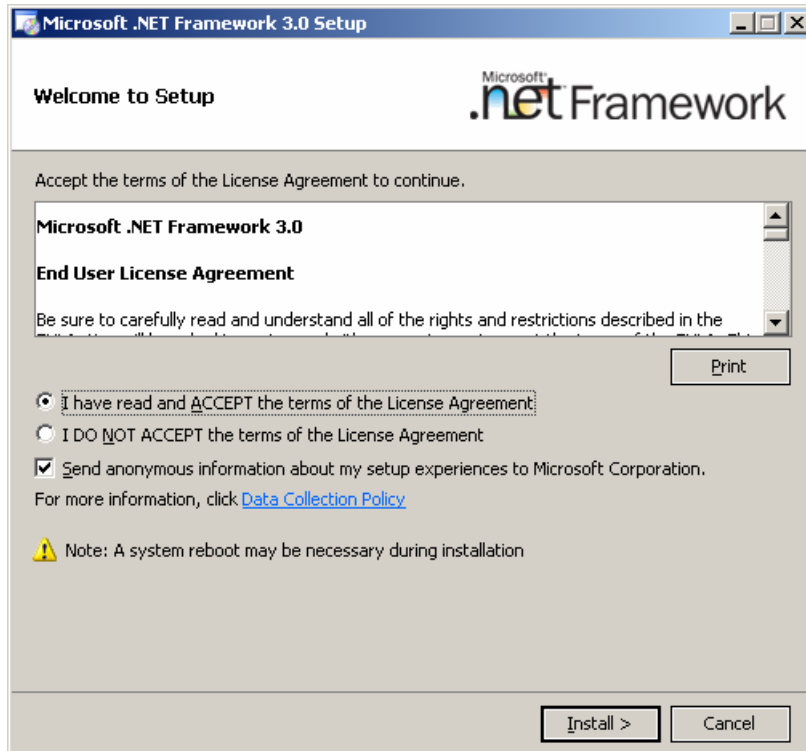
3. Click **Yes** when the dialog box pops up.



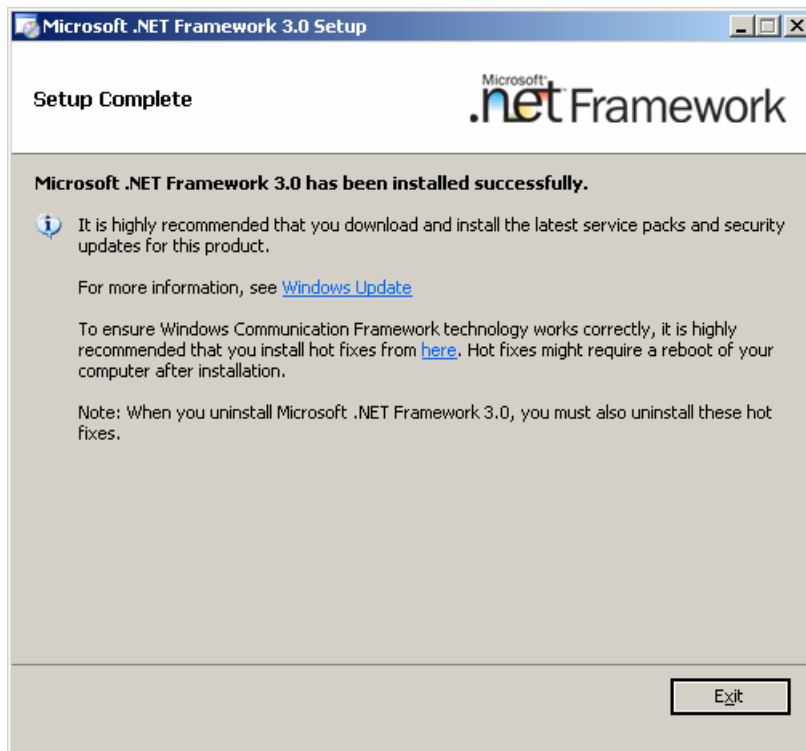
### Step 3: Install Microsoft .Net Framework 3.0

Note: This installs Windows Workflow Foundation version 4203.2.

1. Accept the terms, click on **Install**.

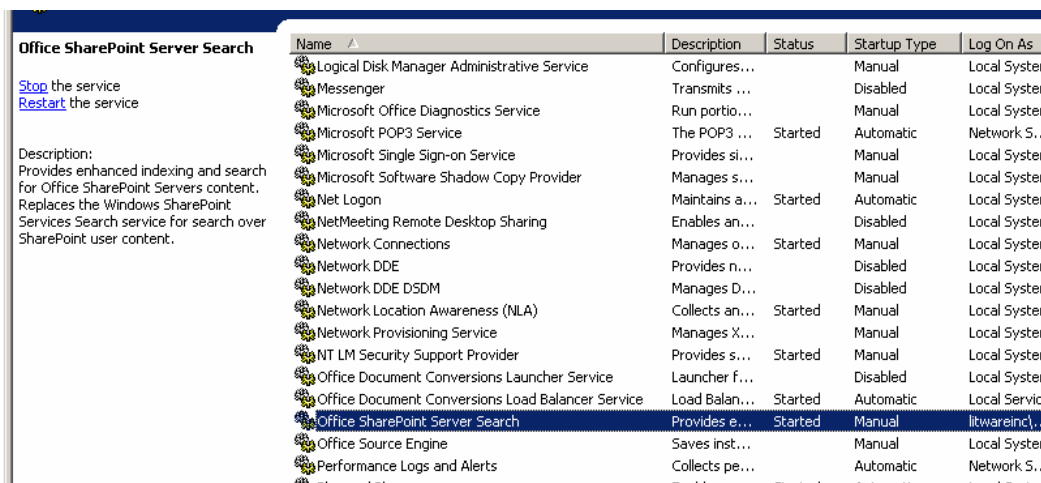


2. Click **Exit** to finish installation.



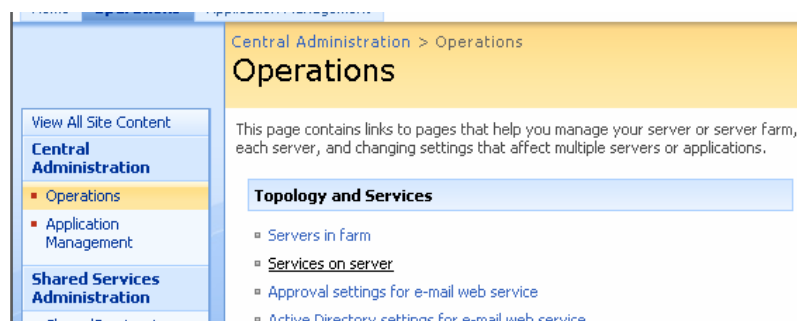
### Step 4: Turn Off the Office SharePoint Server Search service

1. Go to **Start - Programs - Administrator Tools - Services. / Control Panel - Services.**
2. Select Office SharePoint Server Search and click on **Stop.**

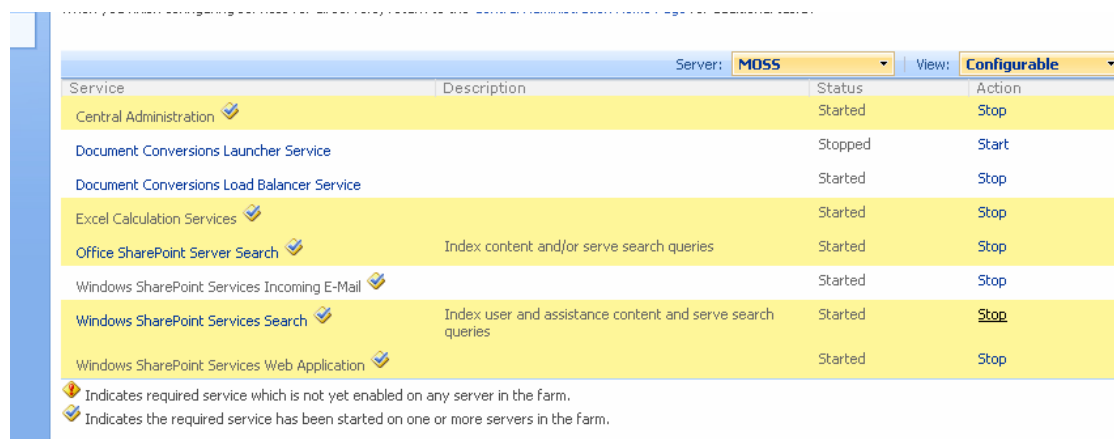


### Step 5: Turn Off the Windows SharePoint Services Search service

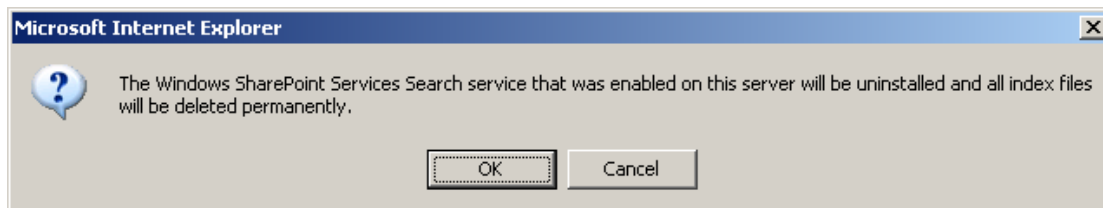
1. Go to SharePoint Central Administration.
2. Click **Operations**, and then select **Services on Server** from the **Topology and Services** section.



3. Find Windows SharePoint Services Search, and click **Stop.**

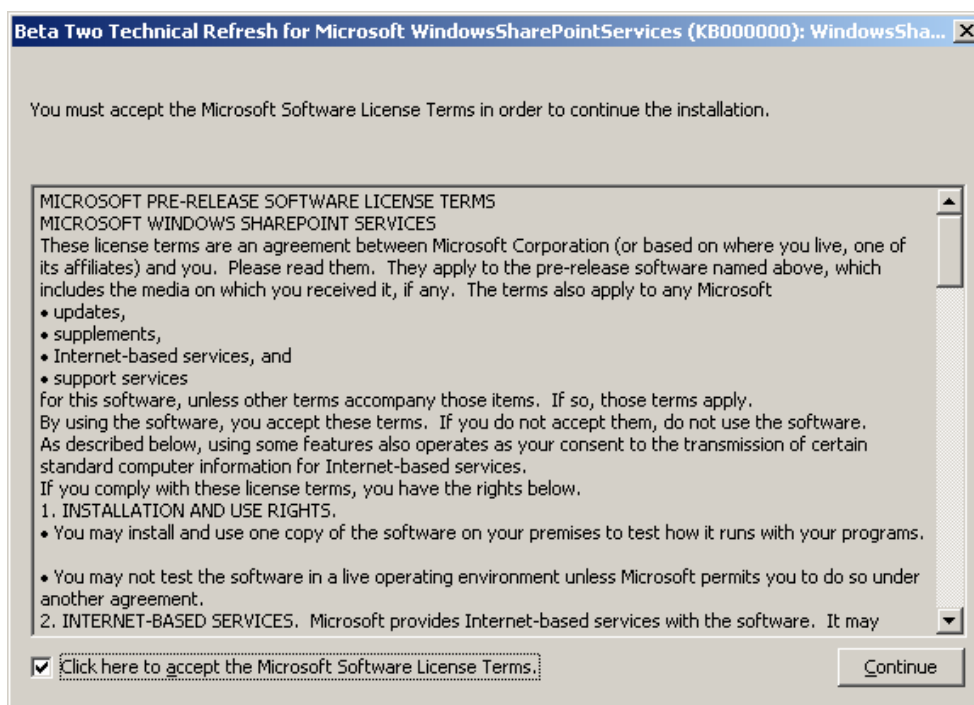


4. Click **OK** when the dialog box pops up.



## Step 6: Run the WSS Technical Refresh Update

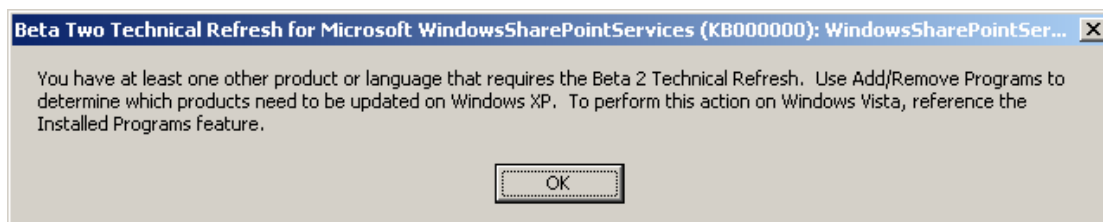
1. Start the update installation by double-clicking the update file.
2. Accept the End User License Agreement (EULA), and then click **Continue**.



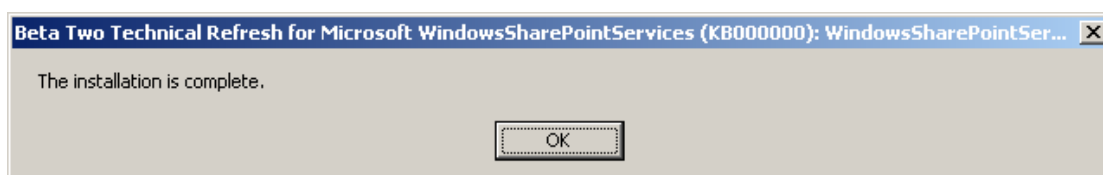
3. After you accept the EULA, a confirmation dialog box is displayed. Click **Yes**.
4. Clicking **Yes** will start installation, beginning with the extraction of the update files.



5. After the update installation has finished, a dialog box will be displayed advising that additional components will require updating.
6. Click **OK**.

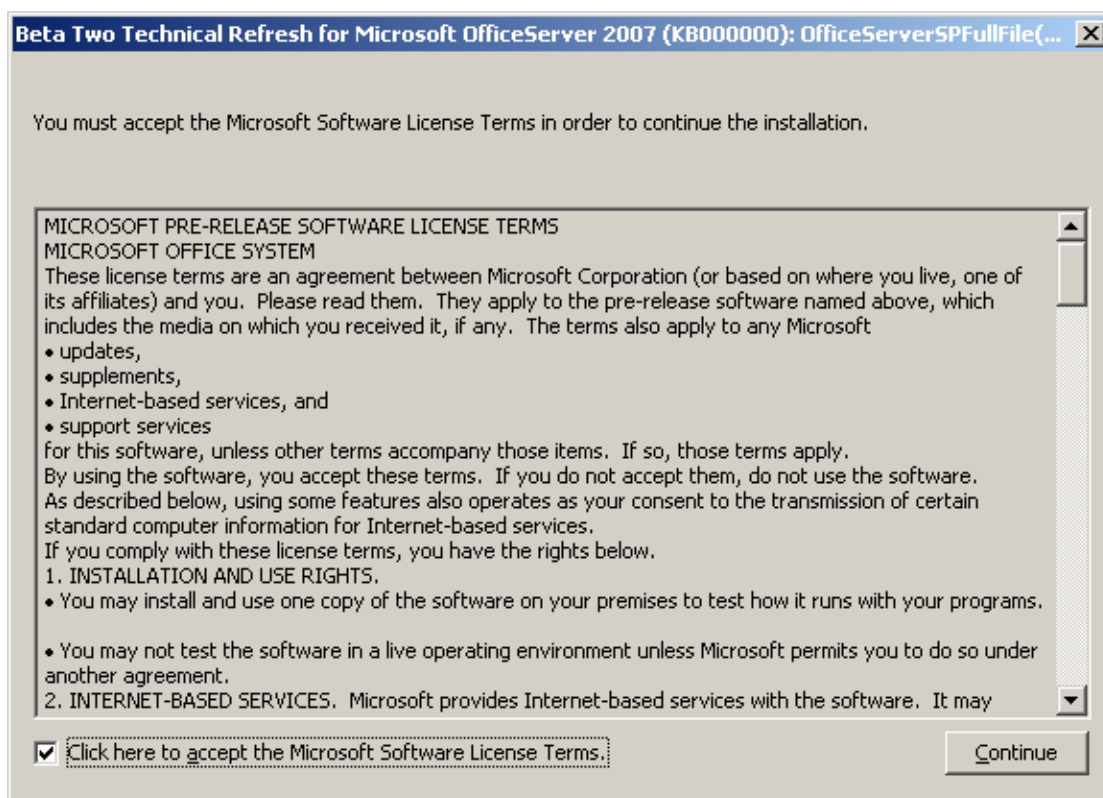


7. Another dialog box will pop up informing that the installation of the Beta 2 Technical Refresh for Windows SharePoint Services is complete.
8. Click **OK**.



## Step 7: Run the MOSS Beta 2 Technical Refresh Update

1. Start the update installation by double-clicking the update file.
2. Accept the End User License Agreement (EULA), and then click **Continue**.



3. After you accept the EULA, a confirmation dialog box is displayed. Click **Yes**.
4. Clicking **Yes** will start installation, beginning with the extraction of the update files.



5. After the update installation has finished, a dialog box will be displayed advising that additional components will require updating.
6. Click **OK**.

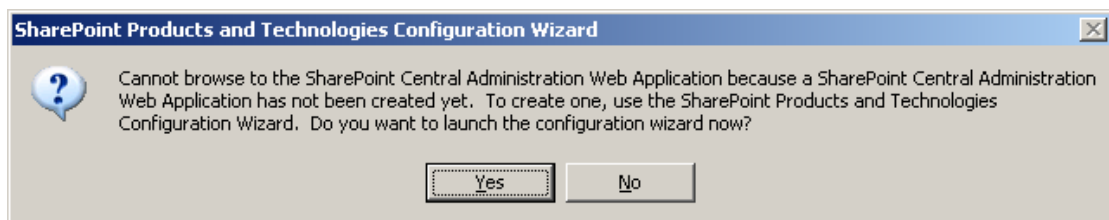


7. Another dialog box will pop up informing that the installation of the Beta 2 Technical Refresh for Windows SharePoint Services is complete.
8. Click **OK**.

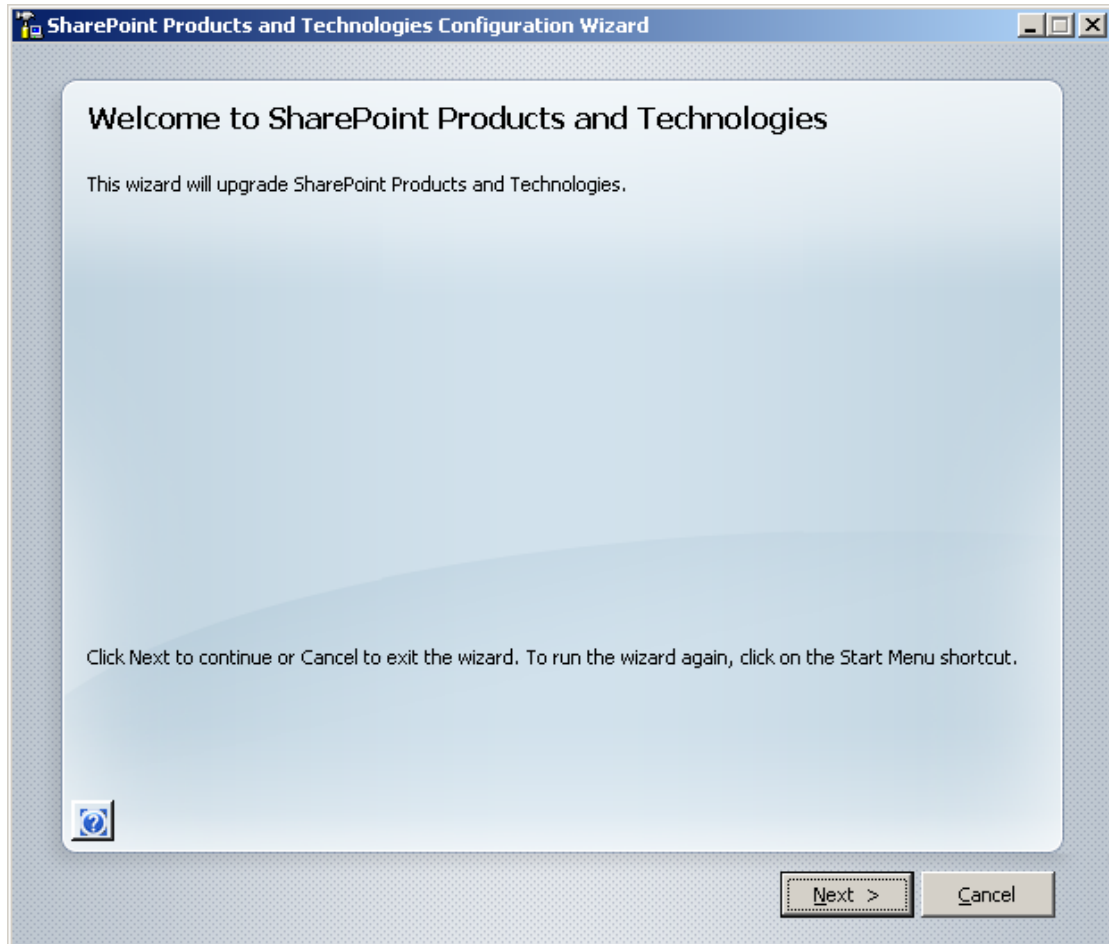


## Step 8: Upgrade Configuration and Sites

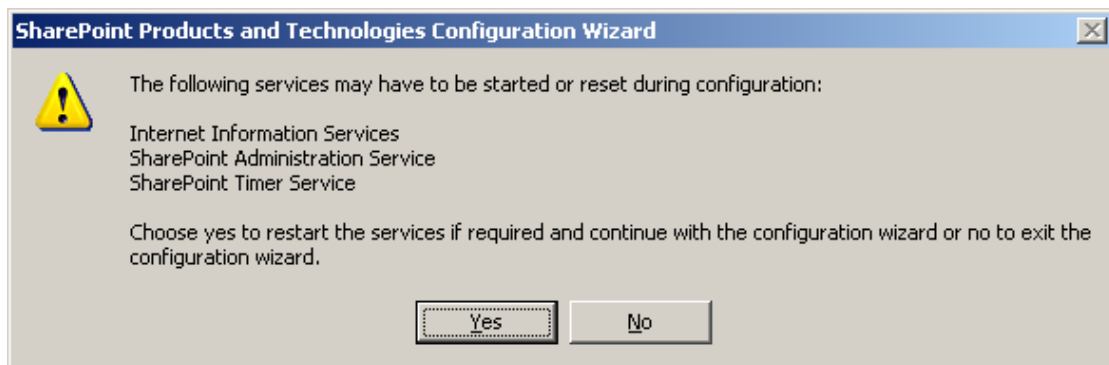
1. Go to **All Programs** on the **Start** menu, click **Microsoft Office Server**, and then click **SharePoint Products and Technologies Configuration Wizard**.
2. A dialog box will pop up, click **Yes**.



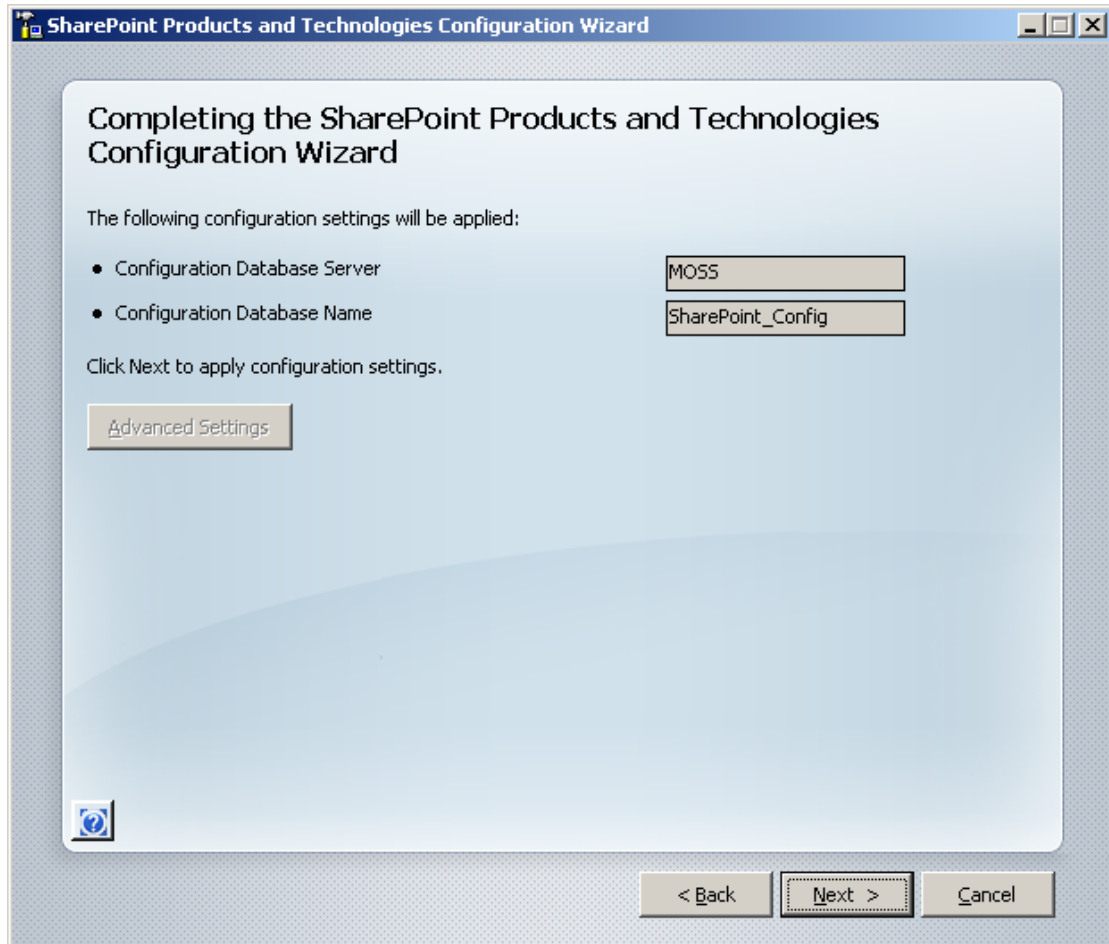
3. Click **Next** to continue.



4. A dialog box will pop up informing that the following services will be reset during the configuration. Click **Yes**.



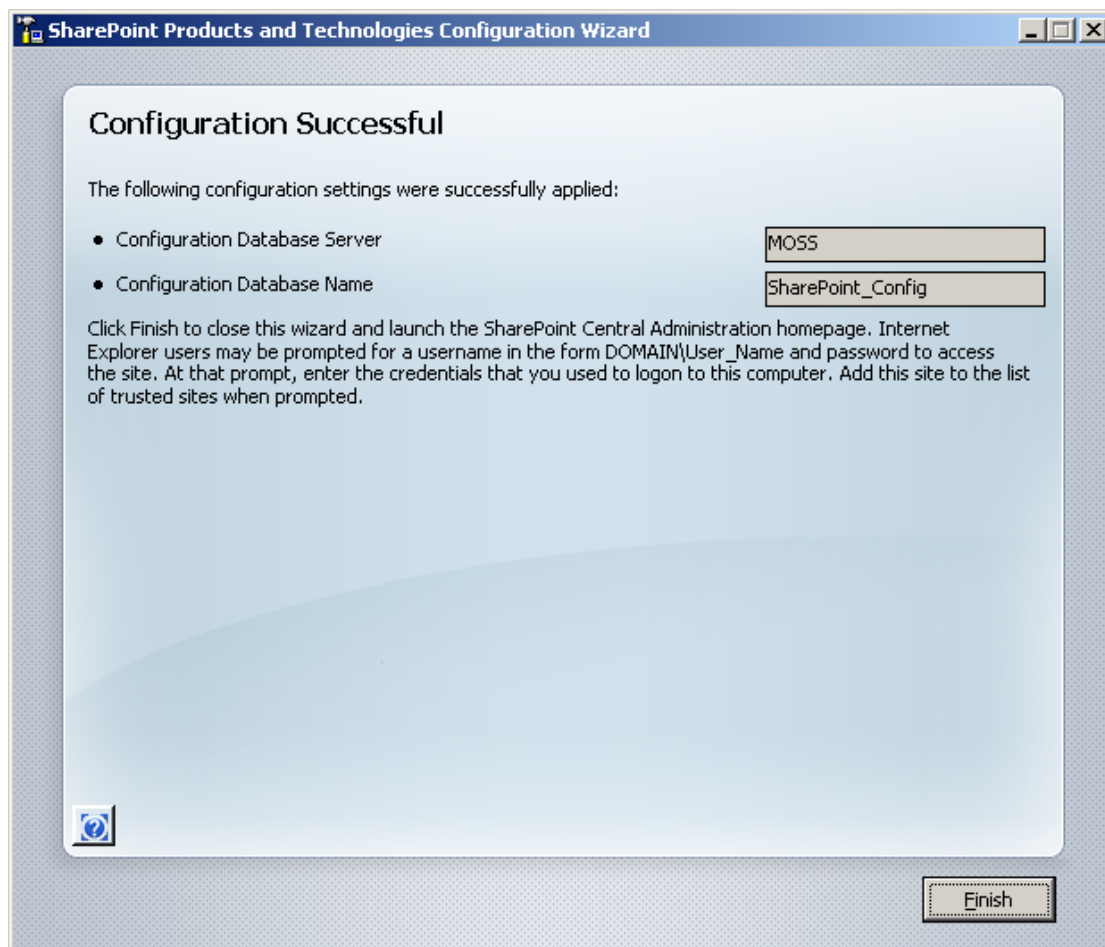
5. Click Next to continue.



6. A message is displayed asking you to run Setup on the remaining servers in the farm. Ignore this; click **OK** to continue.



7. The process will upgrade and update all the sites to Beta 2 Technical Refresh. Upon completion of the process, there will be a confirmation.
8. Click on **Finish**.



Verify that upgrade is completed by reviewing the upgrade log.

The upgrade.log file, located at %windir%\Program Files\Common Files\Microsoft Shared\web server extensions\12\LOGS, contains information about your update.

When the update is complete, the log file will finish with the string "upgrade session has finished". The log will also report if there are any errors or warnings. If errors or warnings have occurred, determine your next action based on information in the log file.

## Step 9: Upgrade InfoPath Forms Services and workflow forms

1. Run the following from the command line

```
%windir%\Program Files\Common Files\Microsoft Shared\web server extensions\12\Bin\stsadm.exe -o reconverallformtemplates
```

## Step 10: Starting the WSS Search Service

1. Go to SharePoint Central Administration.
2. Click **Operations**, and select **Services on Server** from the **Topology and Services** section.
3. Find **Windows SharePoint Services Search**, and then click **Start**.

4. Fill in the required fields, and click **Start**. You should choose a different default search database name to start this service.

The screenshot shows a configuration wizard with three main sections. The first section is for user account selection, with 'your administrator.' in red text above it. The second section is for content permissions, with 'tent using this account.' and 'Read policy, giving it read-only access to all information security, do not use an administrator that can modify content.' The third section is for database configuration, with 'and database name is recommended for most cases. In advanced scenarios where specifying database name is strongly recommended. To use SQL authentication, you must specify a user account and password used to connect to the database.' Below these sections are input fields for 'User name' (litwareinc\administrator), 'Password' (masked), 'Database Server' (MOSS), 'Database Name' (WSS\_Search\_MOSSTR), 'Database authentication' (Windows authentication selected), and 'Account' and 'Password' for SQL authentication. At the bottom, there is an 'Indexing schedule:' section with 'Every 5 Minutes' selected.

your administrator.

Account selection:

Account:

Password:

Permissions:

Content permissions:  Read policy, giving it read-only access to all information security, do not use an administrator that can modify content.

Database configuration:

Database Server:

Database Name:

Database authentication:

Authentication:

Windows authentication (recommended)

SQL authentication

Account:

Password:

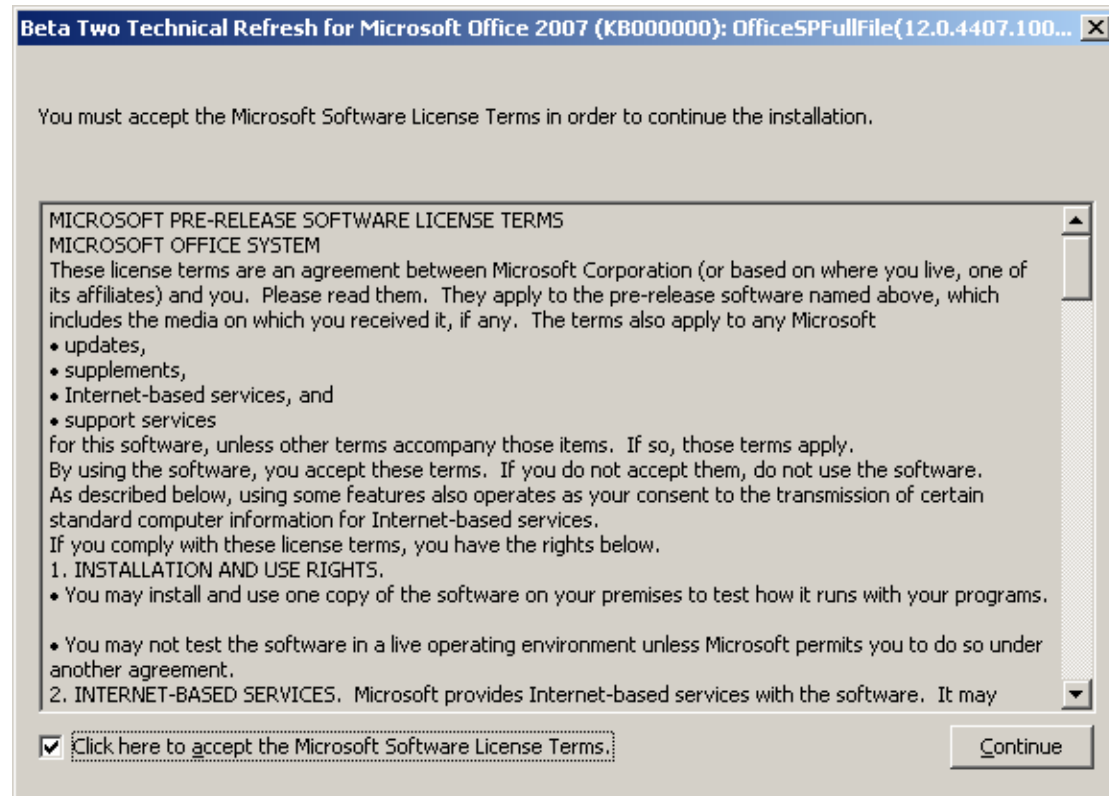
Indexing schedule:

Every  Minutes

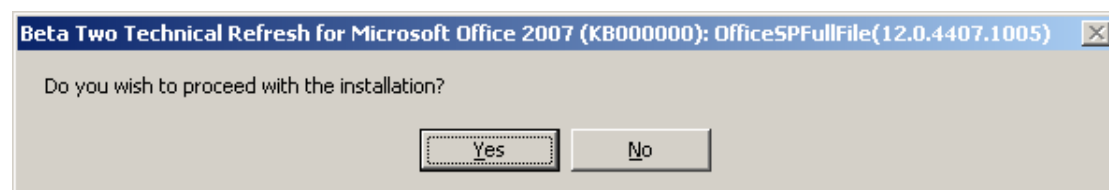
5. Click **Start**.

## Step 11: Run the Office 2007 Beta 2 Technical Refresh Update

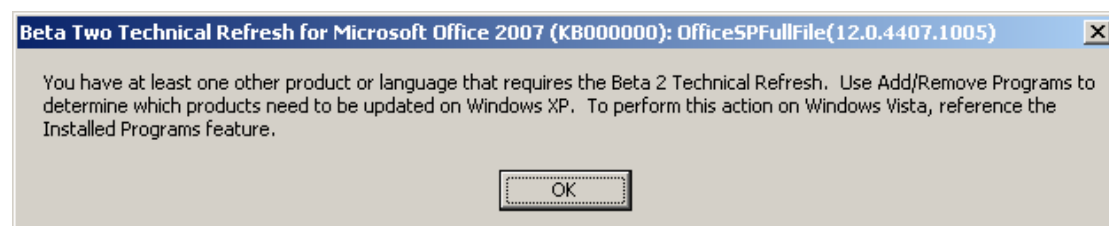
1. Start the update installation by double-clicking the update file.
2. Accept the End User License Agreement (EULA), and then click **Continue**.



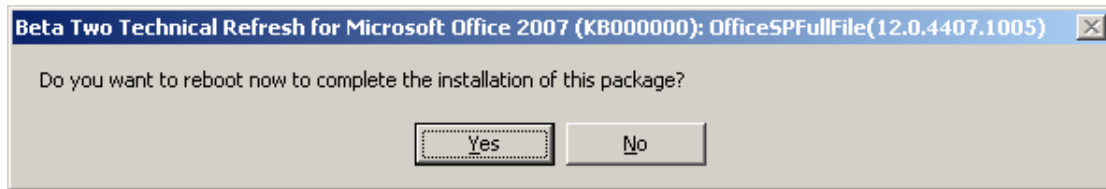
3. After you accept the EULA, a confirmation dialog box is displayed. Click **Yes**.
4. Clicking **Yes** will start installation, beginning with the extraction of the update files.



5. After the update installation has finished, a dialog box will be displayed advising that additional components will require updating.
6. Click **OK**.

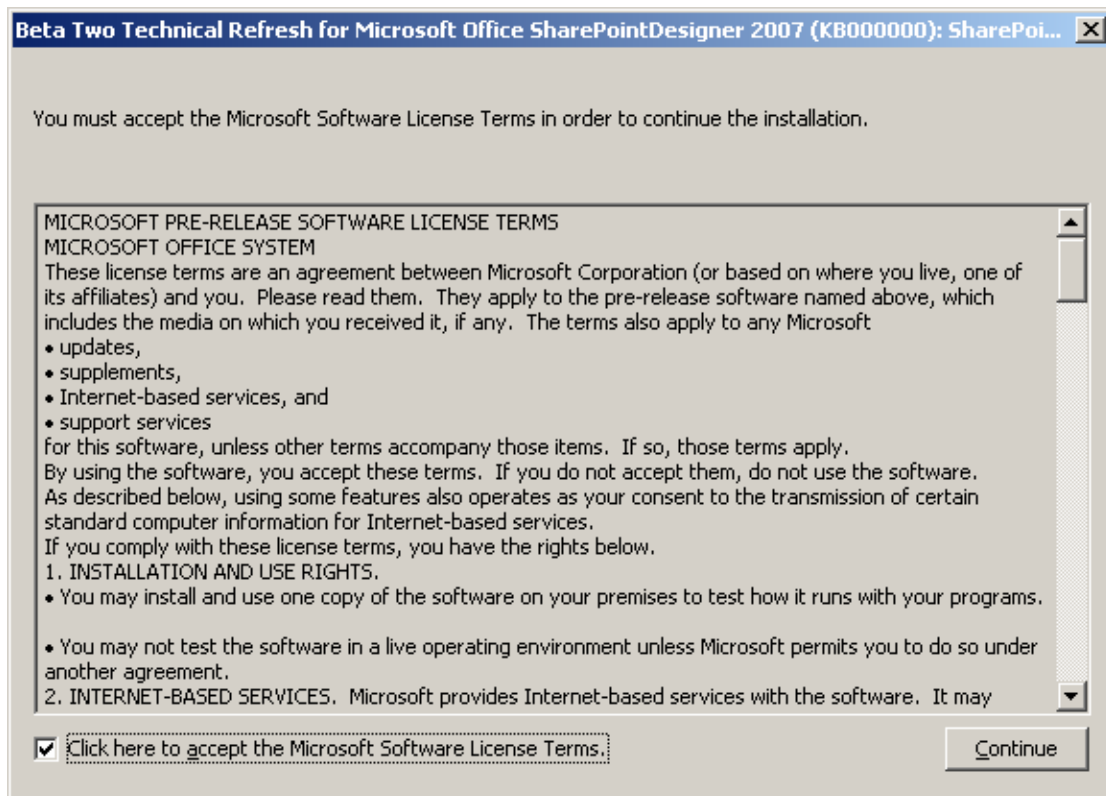


7. Another dialog box will pop up informing that a reboot needs to be done to complete the installation of the Beta 2 Technical Refresh for Microsoft Office 2007.
8. Click **Yes**.

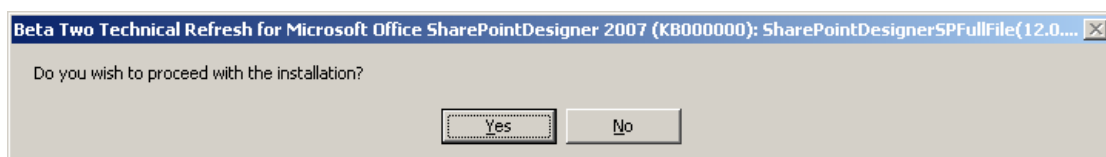


## Step 12: Run the SharePoint Designer 2007 Beta 2 Technical Refresh Update

1. Start the update installation by double-clicking the update file.
2. Accept the End User License Agreement (EULA), and then click **Continue**.



3. After you accept the EULA, a confirmation dialog box is displayed. Click **Yes**.
4. Clicking **Yes** will start installation, beginning with the extraction of the update files.



5. After the update installation has finished, dialog box will pop up informing that a reboot needs to be done to complete the installation of the Beta 2 Technical Refresh for Microsoft Office SharePoint Designer 2007.
6. Click **OK**.

