

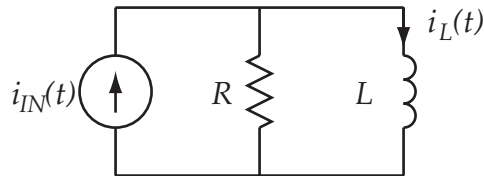
Inter American University of Puerto Rico
Bayamón Campus
School of Engineering
Department of Electrical Engineering

ELEN 3301 – Electric Circuits I

Problem Set 10

Due Wednesday, November 24

Problem 1: Find the sinusoidal steady-state of $i_L(t)$ if $i_{IN}(t) = I_{IN} \cos(\omega t)$ in the circuit shown below.



Problem 2: Find the sinusoidal steady-state of $v_C(t)$ if $v_{IN}(t) = V_{IN} \cos(\omega t)$ in the circuit shown below.

