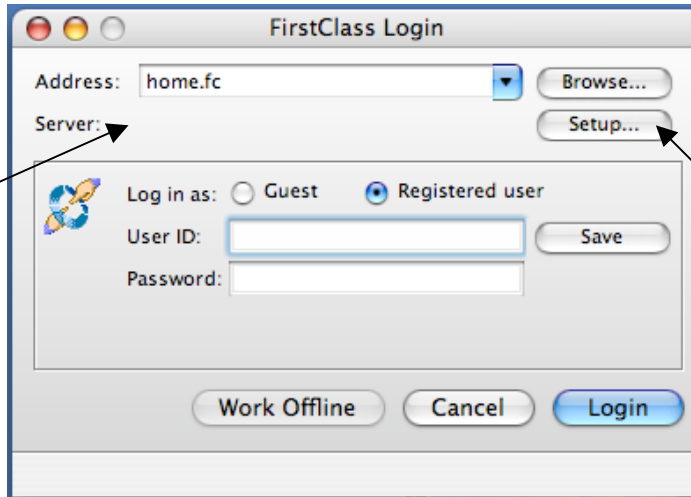


# FirstClass Problem

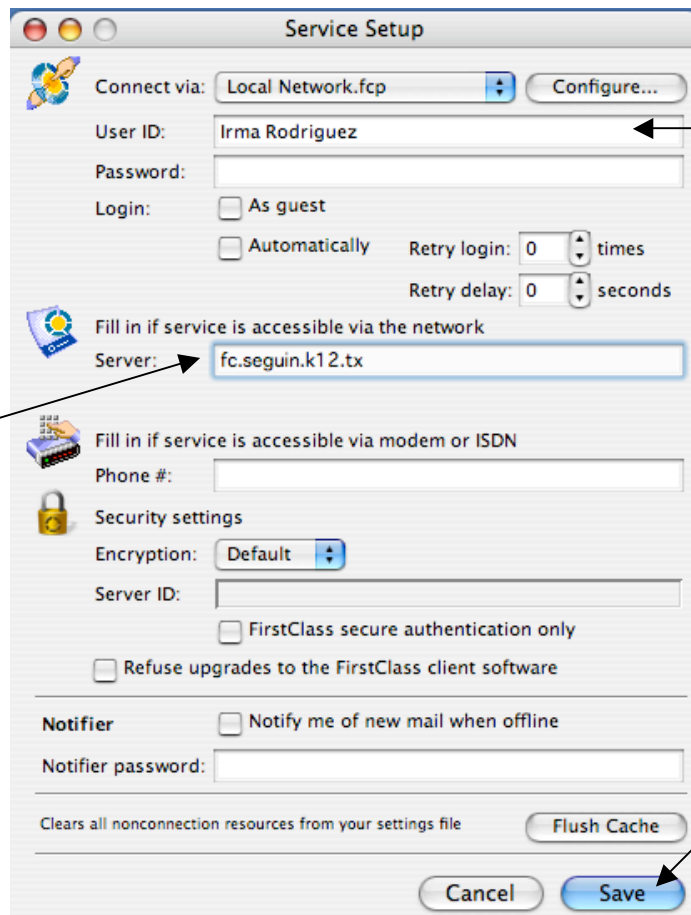
If FirstClass is not working, it may be because the program is not connecting to the district FirstClass server.

When you click on FirstClass, and this login window appears, check to see if it is going to a server.



1. Next to the word *Server*: you should see the server name.

2. If not, you need to click on the *Setup* button



3. At the Setup window, in the box, next to the word *Server*, you will need to type in the server name:

*fc.seguin.k12.tx.us*

4. You may type in your name, so it can be saved.

Do NOT save your password. Leave it blank.

5. Click the *Save* button.