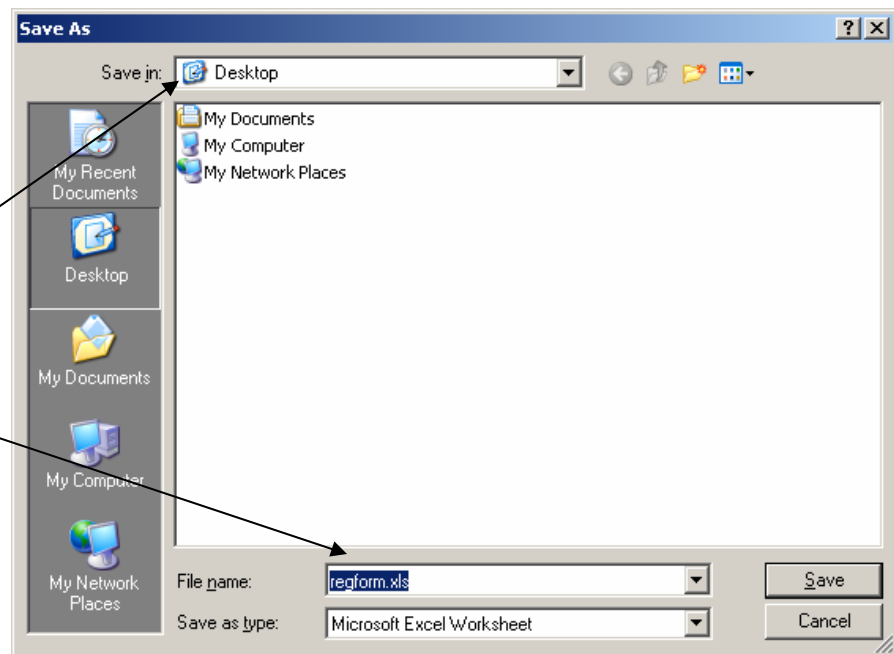


How To File the Jamboree Registration Form Electronically

In order to avoid duplicate entry and illegible forms, we ask that you prepare and submit your Jamboree registration form electronically. Follow the instructions below:

1. Go to the Jamboree website at: geocities.com/JobieJamboree
2. From the list of forms, right click on the “Registration Form”.
3. From the pop-up box, choose “Save Link As...”

4. Choose where you would like to save the file on your computer, either on your desktop or in a folder.



5. On your computer, open the saved document. This document is an Excel spreadsheet. You will only be able to type in the fields which require information. Click in the “Bethel #” box to begin. You may either hit <Tab> to move to the next field or click and move with your cursor.

6. The form will do the all the math for you based on your entries.

