

THE INTER-DISCIPLINARIAN

C R I T I C A L I N F O R M A T I O N P U B L I C A T I O N S

THE POLICY OF WASTE

SPECIAL POINTS OF INTEREST:

Health effects of waste disposal policies

Water purification and waste conversion

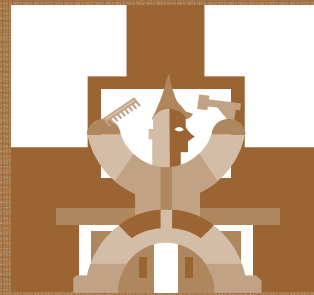
Rural and urban models

Objections to the law of Commission

Cautions on Commission formation

It has been historically speculated that in addition to 100 public latrines, the ancient Romans used sauna like facilities where dignitaries would sit face to face with each other discussing critical matters during such pressing moments. Today, removed from such social comforts, most modern facilities are private in design, even in scope of their public function. Yet this underscores that the mark of most civilizations among many things is a separateness from excrement and corpses in daily living. Often the

argument of health concerns due to contamination and infection, pale in comparison to the psychological and eventual physiological damage



such exposure has on the mind and body. In terms of the associational, in the psychological sense it can be argued

that the symptoms of poorly maintained facilities are weight loss, communal discord, religious violations, atmospheric putrefaction and cultural distortion, just to name a few. However, it must be included that other schools of thought propose, that as a means of aversion therapy, nations that splurge the necessary refinement of cuisine to obese levels are in better need of occasional exposure to such methodology. Needless to say, most modern polities do not encourage the use of emetics as a “therapeutic” means.

COMMISSION CAUTIONS

Concerning the formation of commissions, there is the implication that there is a limited time period allotted to the purpose of such bodies. While commissions in short provide a con-

duit of mediation and inquiry regarding national and other issues, particularly those of crisis management; however extensively, commissions tend to proceed as the government’s gov-

ernment. As a cautious record, the catholic encyclopedia remarks about commission authority; “these decisions are not the opinions of a private assembly, but an official directive norm; to

**T H E
P O L I C Y O F W A S T E**

However the relationship between waste management and water though frequently an issue of pollutants and shortage, exposes two basic inconsistencies; the first is that while sewage problems exist, inner city Freetown “pump” water is remarkable one of the purest in Sierra Leone. Second, is that despite this argument, economic factors of packaged water introduce a conflicting de-

mand, since as in the West, such businesses are one of the fastest growing in the country – how this revolution affects the need to channel not simply waste matter but “non-drinking” water in a whole is still a matter of debate. Though there are guidelines in strict definition, they do not take into consideration constructive variances in urban planning as models of treat-

ment. While urban models rely heavily on treatment and conversion through pipe systems, rural models use tanks and internment storage facilities for periodic disposal. This is not to suggest that rural models are not used in urban locales. Nonetheless, a common approach to this issue is one of a sanitized discussion given sci-

T H E P O L I C Y O F W A S T E

ences application of waste disposal technology and its similarity to methods used in rural agricultural communities, especially those methods proven successful in manure containment and use. This is despite the argument that modern waste dis-

posal is not an academy science but an industrial matter if anything. The University Of Australia’s India study for instance recommending reed irrigational efforts to channel and convert waste matter has been internationally applauded as a study tak-

ing into consideration the particularly “Urban” problem. In Sierra Leone, government increased awareness by raising fines in the revival of the 1960 Public Health Act. Still, post rehabilitation and reconstruction efforts often overlook the idea of a

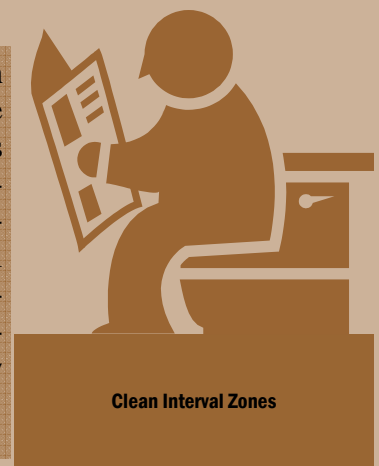


**T H E
P O L I C Y O F W A S T E**

national sewage plan. The issue itself is as uncomfortable as its need, frequently prompting examples of well maintained yet out of date facilities on the one hand, and deplorable conditions on the other. While the clean water

packaged revolution and its corporate image is similar to the global corporate bottled water revolution, it emphasizes the need to either seek more channeling of non-drinking water resources towards waste disposal or to find rapid

aeration methods such as is common in the “Baffa” latrine. Perhaps more detailed assignments towards designating clean “Interval Zones” should be underway, since urban congestion may not allow for such methods.





CRITICAL INFORMATION PUBLICATIONS

BUSINESS CONTACTS AVAILABLE IN
USA, EUROPE, WEST AFRICA

ALL QUERIES SHOULD BE SENT TO
E-MAIL: JGBUJAMA@YAHOO.COM
PUBLISHER
DONATIONS ARE WELCOME

THE INTER-DISCIPLINARIAN IS A MULTI-FACETED NON-PROFIT COMPANY CREATED TO DEVELOP A VISION OF MUTUAL INVESTMENT AND SELF SUFFICIENCY THROUGH A CULTURE OF CRITICAL THINKING.

IT WAS FOUNDED IN 2004 AS RESPONSE TO GLOBAL MARKETING AND MEDICAL POLICIES THAT THREATEN SOCIAL AND POLITICAL FREEDOMS. OUR MISSION IS TO REDUCE CONFLICT.

COMMISSION CAUTIONS

question them publicly would be lacking in respect and obedience to legitimate authority. We are not hindered from private study of the reasons on which they are based, and if some scholar should find solid arguments against a decision, they should be set before the Commission". Therefore, it must be emphasized that this is not a critique implicitly opposed to the formation of commissions, since almost every form of governing authority has found need to delegate authority in one manner or other. Nonetheless, often there is the result of a block process mechanism in such formations, as impinging on party principles as well as may discourage individual participation. Put more

crudely, there must be a reduction of cynicism towards a process in which opposition members are admitted. Scholars have submitted that Sir Milton Margai served to ratify British interests of those who participated in his post-colonial administration, than he was an overt opposition member. This is not to question Margai's national patronage role or intra-African association towards such goals, since the SLPP still carries his developed party plan. Yet particularly, it would be better to decide on one party formation with internal elections as under APC, or a more broad selection as in German politics, in which winning and losing parties merge interests, than to focus on selective-

ness as a primary concern. It was such concessions (the *Sorbeh* merge) that led to the original SLPP victory in the first place. It must also be considered that the religious association rule has already been compromised in many respects and it will be unlikely other such breaches will not occur in the future. Traditionally and historically even in the formation of western parties, philosophy and conceptual differences were the basis of party formation, given to, but not subject to registration limitations. The argument that is, that the commission is "lower in rank" to the congregation and its individual means.



THE INTERNET MIND

There has been in recent studies, the categorization of a new mental disorder identified as IAD, Internet Addiction Disorder. While not listed in the *Diagnostics and Statistical Manual Of Mental Disorders* (DSMD), associational research publications on psychology like the *Gale Encyclopedia of Mental Disorders*, as well as the American Psychological Association (APA), recognize it as a "process" addiction in the same category as gaming, shopping, TV

viewing and sexual behavior. Particular note is made in distinguishing such addiction from substance abuse. Patients afflicted with IAD are drawn to such addictions for reasons of mood alteration towards a "rush", the re-enforcement of pleasurable thoughts, genetic reasons, modeling (imitation of a mentor), escape from family conflict and an attempt to self medicate. Symptoms include fatigue, apathy and racing thoughts, while treatment is suggested in the form

of abstinence, support groups, re-enforcement reduction and social skills training. Yet, despite the need to invent in explanation of the use of innovative (not aged) mediums, the term "substance" varies, from matter and density to constitutional, essential and most controversial - material. Even though definitively separated, there is a contradiction in the idea of being addicted to essential factors. Therefore, it is unlikely that internet users are "addicted" if so defined, to



Psyche



Psychosis

Even though definitively separated, there is a contradiction in the idea of being addicted to essential factors.

nothing - and moreover difficult to conclude that the term "process", which is defined as a "systematic operation in the production of something" is an addiction in the medical sense. Philosophically, while in due process, most people consider nothing, to be something. These observations are particular to

professionalism and its recent reliance on the internet as a simulated alternative platform, unfortunately transforming the internet to more than just an isolated laboratory. Therefore in the examination of listed effects of IAD, it is irrational to suggest that pleasure, genetic ability, mentoring

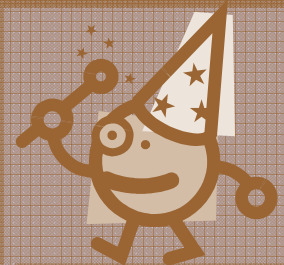
- in brief, an attempt to engage in productive activity, could conflict with work when professionalism and business use such mediums as resource. In view of the need to diagnose the mind in relation to private and social activities, it must be stated that such conclusions of internet behavior have

THE INTERNET MIND

been made too early. From the perspective of the intake of the written word, sound and images, in the form of e-mail, internet messenger and web, it is the response acceleration that must be examined - the global high speed "magic" so to

speaking, and its productive substance. These factors often place science in its least desired zones of anomalism and chaos, in the "process" of balancing rapidity - since data is telemetric record, not teleological activity. And this includes politi-

cal science as well. In the revolutionary observation of internet user evolution, it is important to distinguish psyche - the mind as a functioning center of thought, from psychosis - and in that respect, the internet.



High Speed Magic