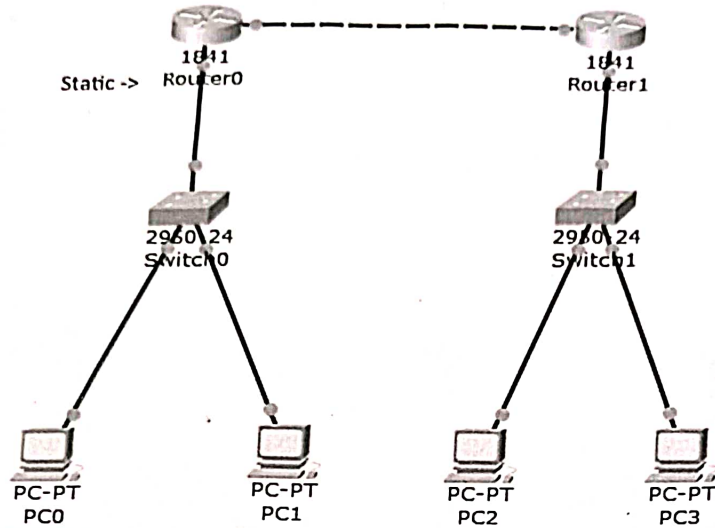


→ IP Configuration  
"net" mask -

## PRACTICAL NO. 4.

AIM:-

Configure IP with static routing



Step 1:- Configure pc-0 <sup>PC-PT-00-100</sup>

click on pc-0 → go to desktop → IP Configuration and fill the data IP Address - <sup>10.0.0.2</sup> 10.0.0.2, subnet mask - 255.0.0.0 and default gateway - 10.0.0.1.

After entering the detail, close the window.

Step 2:- Configure pc-1

click on pc1 → go to desktop → IP Configuration and fill the data IP address - 10.0.0.3, Subnet mask - 255.0.0.0, default gateway - 10.0.0.1.

After entering the detail, close the window.

Step 3:- Configure pc 2

click on pc 2 → go to desktop → IP Configuration and fill the data IP Address - 30.0.0.2, Subnet mask - 255.0.0.0, default gateway - 30.0.0.1.

After entering the detail, close the window.

Step 4:- Configure pc-3.

click on pc-3 → go to desktop → IP Configuration and fill the data IP address- 30.0.0.3, subnet mask- 255.0.0.0, default gateway- 30.0.0.1.

After entering the detail, close the window.

Step 5:- Configure router 0

a) click on router 0 → go to Configure tab → click on fast ethernet 0/0 and fill the values IP Address- 10.0.0.1, subnet mask- 255.0.0.0. (do not forget to select the check box port status).

b) click on router 0 → go to Configure tab → click on fast ethernet 0/1 and fill the values IP Address- 20.0.0.1, subnet mask - 255.0.0.0 (do not forget to select the check box port status).

Step 6:- Configure Router 1.

a) click on Router 1 → goto Config tab → click on fast Ethernet 0/0 and fill the values. IP Address- 30.0.0.1, subnet mask- 255.0.0.0. (do not forget to select the check box port status).

b) click on Router 1 → goto Config tab → click on fast ethernet 0/1 and fill the values. IP Address 20.0.0.2, subnet mask- 255.0.0.0. (do not forget to select the check box port status).

Step 7:- Configure Router 0 using static routing. click on Router 0 → goto Config tab → click on static and then enter the values Network- 30.0.0.0, mask - 255.0.0.0, Next Hop- 20.0.0.2

Then click on Add button.

Step 8:- Configure Router 1 using static routing, click on Router 1 → go to Config tab → click on static and then enter the values Network-10.0.0.0, mask-255.0.0.0, Next Hop-20.0.0.1 then click on add button.

Step 9:- Go to PC0 → Desktop → Command prompt.

```

static
Command Prompt
Packet Tracer PC Command Line 1.0
PC>ping 30.0.0.2
Pinging 30.0.0.2 with 32 bytes of data:
Reply from 30.0.0.2: bytes=32 time=1ms TTL=126
Reply from 30.0.0.2: bytes=32 time=0ms TTL=126
Reply from 30.0.0.2: bytes=32 time=1ms TTL=126
Reply from 30.0.0.2: bytes=32 time=1ms TTL=126
Ping statistics for 30.0.0.2:
    Packets: Sent = 4, Received = 4, Lost = 0 (0% loss),
    Approximate round trip times in milli-seconds:
        Minimum = 0ms, Maximum = 1ms, Average = 0ms
PC>
    
```

Step 10:- Go to PC 2 → Desktop → Command prompt and check the output /succession.

Output:-

Fire	Last Status	Source	Destination	Type	Color	Time(se)	Periodic	Num	Edit	Delete	
●	Successful	PC0	PC1	ICMP	■	0.000	N	0	(edit)	(delete)	Static
●	Successful	PC0	PC3	ICMP	■	0.000	N	1	(edit)	(delete)	
●	Successful	PC1	PC2	ICMP	■	0.000	N	2	(edit)	(delete)	