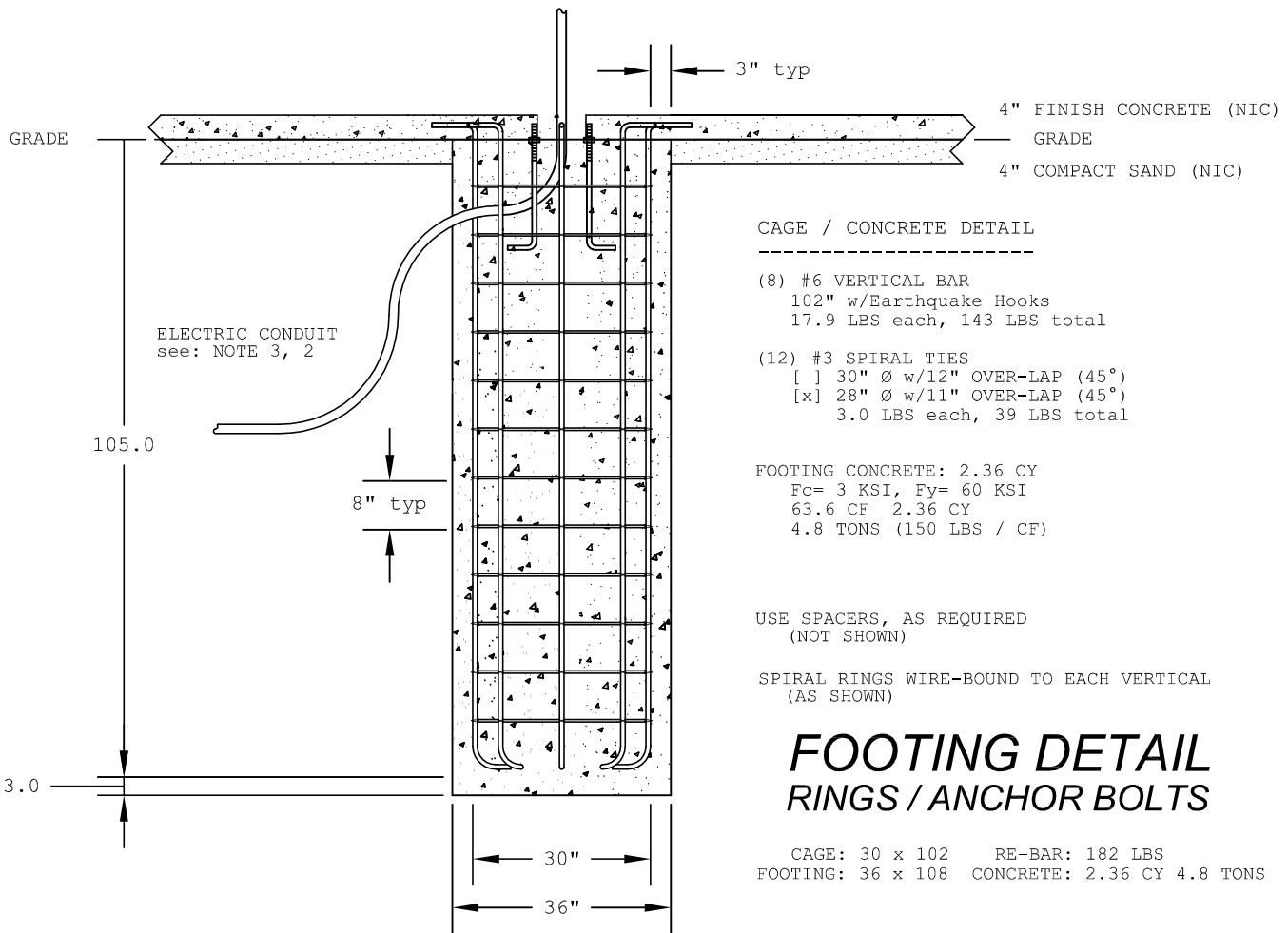
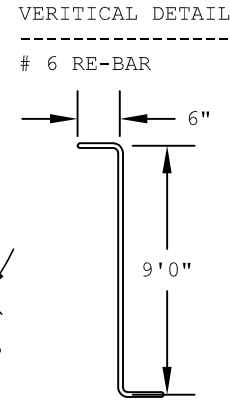
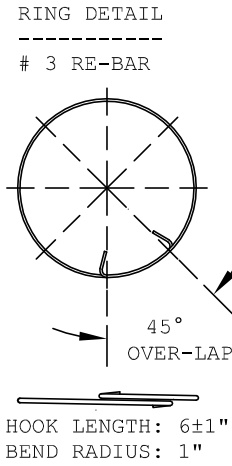
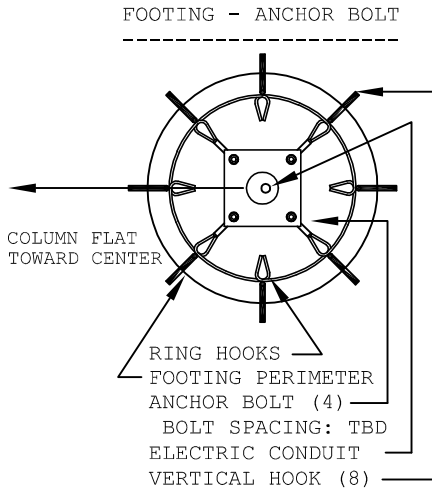


ANCHOR BOLT  
 ASTM F1554 GRADE 105  
 SIZE: 3/4, 20, 4, 6  
 HOT DIP GALVANIZED



CAGE / CONCRETE DETAIL

- (8) #6 VERTICAL BAR  
 102" w/Earthquake Hooks  
 17.9 LBS each, 143 LBS total
- (12) #3 SPIRAL TIES  
 [ ] 30" Ø w/12" OVER-LAP (45°)  
 [x] 28" Ø w/11" OVER-LAP (45°)  
 3.0 LBS each, 39 LBS total

FOOTING CONCRETE: 2.36 CY  
 Fc= 3 KSI, Fy= 60 KSI  
 63.6 CF 2.36 CY  
 4.8 TONS (150 LBS / CF)

USE SPACERS, AS REQUIRED  
 (NOT SHOWN)

SPIRAL RINGS WIRE-BOUND TO EACH VERTICAL  
 (AS SHOWN)

**FOOTING DETAIL**  
**RINGS / ANCHOR BOLTS**

CAGE: 30 x 102 RE-BAR: 182 LBS  
 FOOTING: 36 x 108 CONCRETE: 2.36 CY 4.8 TONS

- NOTE:
1. DRAWING REFERENCE ONLY. INFORMATION BY OTHERS. PARK SPECIALTIES DOES NOT PROVIDE ENGINEERING.
  2. NIC - NOT IN CONTRACT
  3. ELECTRIC CONTRACTOR TO INSTALL CONDUIT BEFORE CONCRETE POUR.

<b>PARK SPECIALTIES</b> <b>PARK AND PLAYGROUND PROFESSIONALS</b>	
PROJECT: <b>WILDFLOWER PARK - BEAUMONT</b>	
PRODUCT: <b>LITCHFIELD SHELTER, 60 FOOT OCTAGON</b>	
CONTACT: GOTHIC LANDSCAPE / KB HOMES BRUCE WILSON 661 857-3024	DRAWN BY: JAMES W. STRICKLAND 27 DECEMBER 2006