

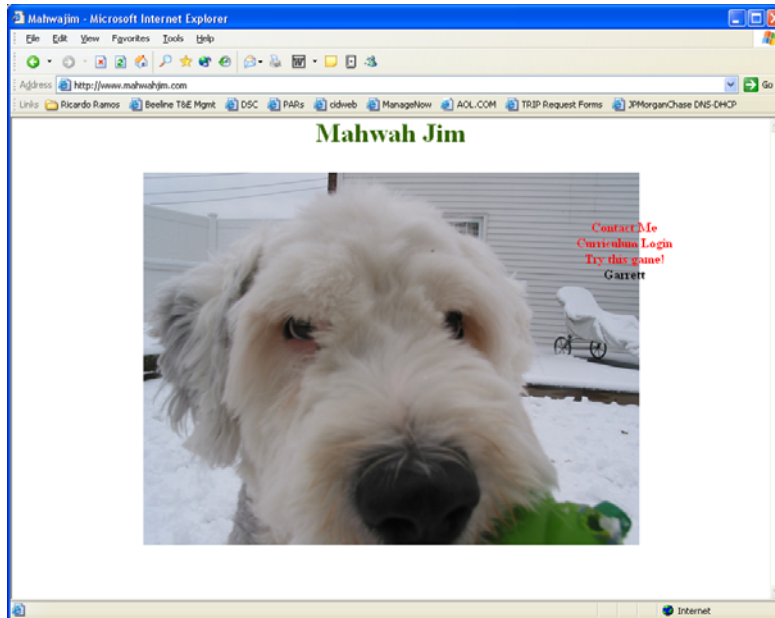


Children's Ministry Curriculum Instructions

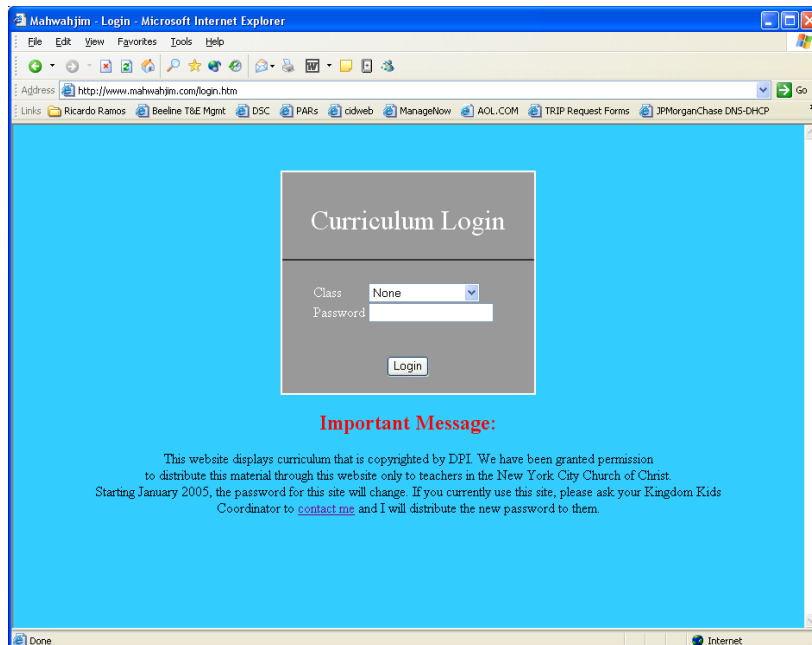


To get to the CM Curriculum WebPages please follow the below instructions.

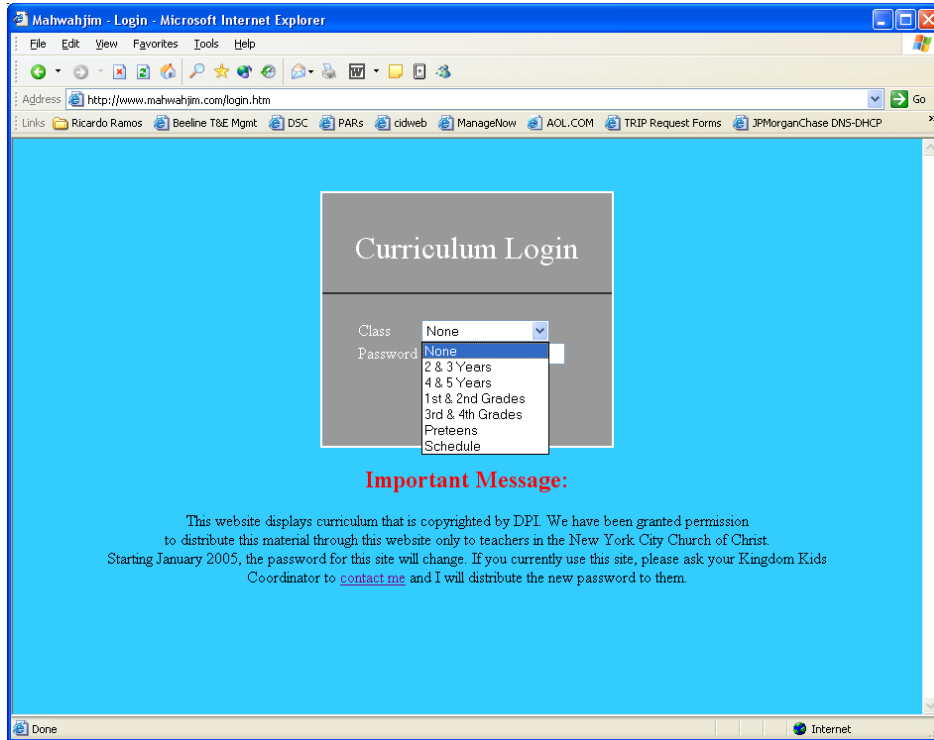
1. For the CM Curriculum, please go to the following website, www.mahwahjim.com.



2. Click on the “Curriculum Login” link on the main page and it will bring you to the Login prompt. The following will appear.



3. Select the “Class” that you are currently teaching or if you just want to see the schedule.



4. For password access, please contact your Children's Ministry leaders or those individuals under the Leadership link on the LI Church website.
5. Depending on the day of the week, Sunday or Thursday, you will print the corresponding Lesson Plans.
 - a) Sunday's Lesson Plan will be up to “The Supplemental”.
 - b) Thursday's Lesson Plan will be “The Supplemental”.