

# Chapter 1 Setup and Installation

## CHAPTER CONTENTS

Section 1	General Setup Information .....	5	Section 3	Installation Procedure for Network Version .....	17
	Hardware Requirements	5		Overview	17
	Software Requirements	5		Installation types	18
Section 2	Installation Procedure for a Stand-alone PC .....	7		File Server Install	19
	Runtime/Evaluation Package	8		Local Machine Install	26
	Standard Package	11		Set Up License Server	30
	Student Package	14			



# 1.1 General Setup Information

This section describes how to set up and install ProModel.

## 1.1.1 Hardware Requirements

### Minimum

486 Processor  
32 Mb RAM (Must be 8 Mb extended memory)  
25 Mb Free Disk Space  
VGA Monitor (640 x 480)  
CD ROM  
Mouse

### Recommended

200 MMX Pentium Processor or better  
32 Mb RAM  
65 Mb Free Disk Space  
SVGA Monitor (1024 x 768 x 16 million colors)  
CD ROM  
Sound card  
Internet access  
Mouse

## 1.1.2 Software Requirements

ProModel runs on any of the following configurations:

1. Windows 95
2. Windows 98
3. Windows NT 4.0<sup>1</sup>

---

<sup>1</sup>. See additional instructions for installing ProModel on Windows NT in the following sections.



# 1.2 Installation Procedure for a Stand-alone PC

The installation program will decompress and copy files from the CD-ROM into user-specified directories. In addition, Windows automatically adds a new Windows Program Group containing ProModel program icons to the Program Manager.

## **Note**

If you encounter problems installing ProModel, please call the ProModel Product Team at (888) PRO-MODEL from 6:00 AM to 6:00 PM MST, Monday through Friday or page us at (888) 332-1271. We will be glad to help you get up and running.

## **How To**

### **Install ProModel:**

1. Attach the security key to the LPT1 port.
2. Start Windows.
3. Insert the CD-ROM.
4. Select **R**un... from the **S**tart menu.
5. Type `x:\setup` (where x is the CD-ROM drive letter) and press ENTER. The following dialog will appear.



6. Choose the package you wish to install and click **N**ext. (By default, ProModel selects **S**tandard Package.)

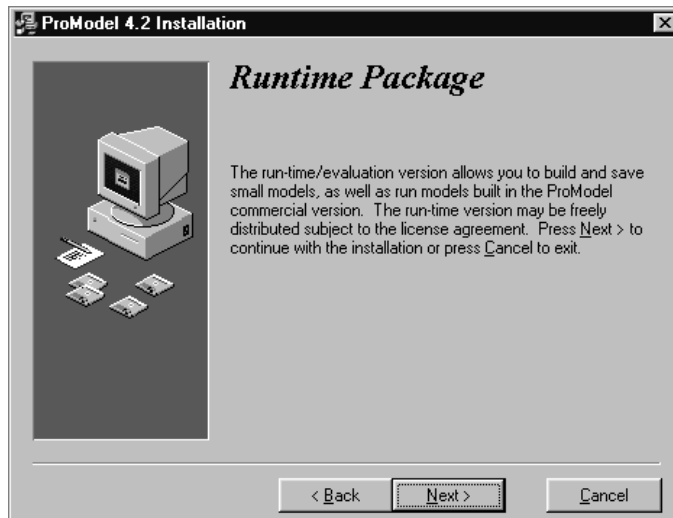
## 1.2.1 Runtime/Evaluation Package

### How To Install Runtime/Evaluation Package:

1. Select **Runtime/evaluation package** from the installation dialog.
2. Click **Next**.



3. Review the information dialog and click **Next**



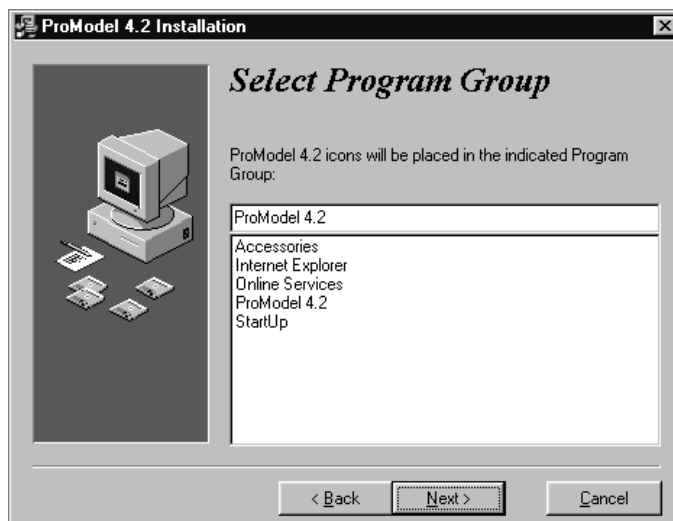
4. Choose the type of installation you wish to perform and click **Next**.



5. Select the directory to which you wish to install ProModel and click **Next**.



6. Select the program group you wish to use and click **Next**. (By default, ProModel creates its own group).



7. Click **Next** to finish installing ProModel.



## 1.2.2 Standard Package

### How To Install Standard Package:

1. Select **Standard package** from the installation dialog.
2. Click **Next**.



3. Review the license agreement and click **Next**.



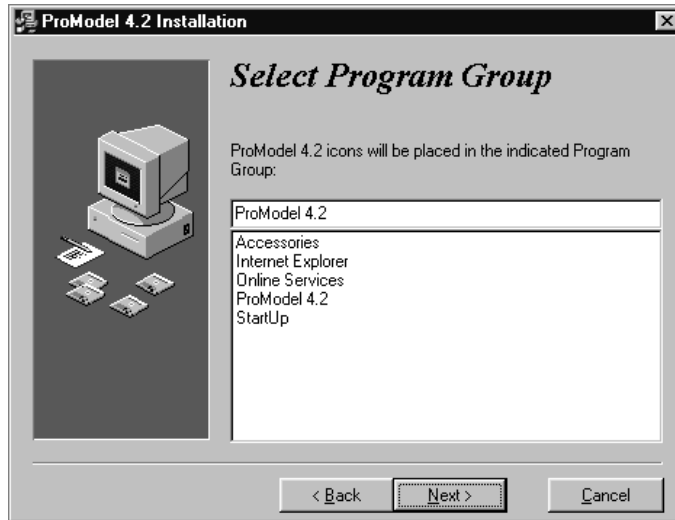
4. Choose the type of installation you wish to perform and click **Next**.



5. Select the directory to which you wish to install ProModel and click **Next**.



6. Select the program group you wish to use and click **Next**. (By default, ProModel creates its own group).



7. Click **Next** to finish installing ProModel.



## 1.2.3 Student Package

### How To Install Student Package:

1. Select **Student package** from the installation dialog.
2. Click **Next**.



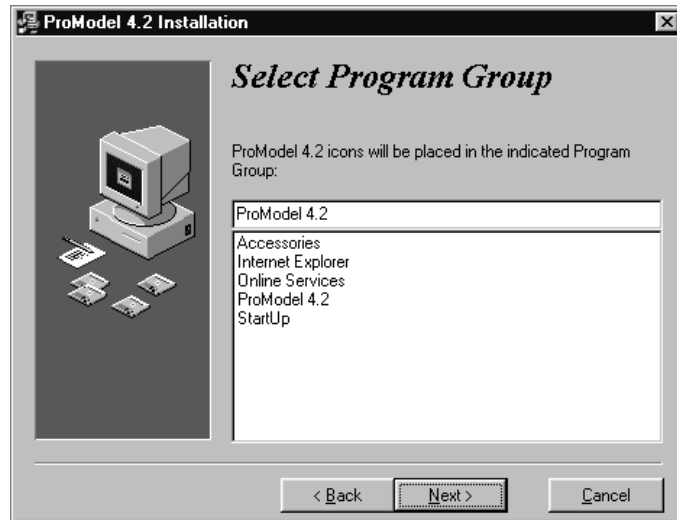
3. Choose the type of installation you wish to perform and click **Next**.



4. Select the directory to which you wish to install ProModel and click **Next**.



5. Select the program group you wish to use and click **Next**. (By default, ProModel creates its own program group).



6. Click **N**ext to finish installing ProModel.



## 1.3 Installation Procedure for Network Version

When you perform the standard ProModel installation, you must attach the security key included with your software to your computer's printer port. Only with the key attached will you have access to the full version of the product.

In a multi-user environment, license tracking with hardware keys is expensive. To combat this expense, PROMODEL Corporation offers a network version of ProModel that allows a single machine to control license usage (via a network connection) for several users. To use this method of license tracking, you must purchase a *network* version of ProModel. The network version of ProModel includes a security key and the license manager software used to control license usage at your site.

### 1.3.1 Overview

When you install to and run the network version of ProModel from a workstation's local hard drive or a file server share, the workstation searches your network for a license key server rather than check its own printer port for a security key. Once it locates the license key server, the workstation asks the license manager software (running on the key server) if a license is available. If a license is available, the license manager software will assign a license to the workstation. When you exit ProModel, the license you used becomes available to another user.

---

** Hint**

Check the support web page for periodic updates to the installation information and software configuration of ProModel and the license server software.

<http://www.promodel.com/support>

---

---

** Note**

If you are running a network version of ProModel on a routed network and your license key server and workstations are located on different sub-nets, see *Find a License Key Server on a Routed Network* on page 34.

---

## 1.3.2 Installation types

### File Server Install

This procedure allows you to install ProModel to a share on a file server. From each workstation that will run ProModel, run the workstation setup program (this will create a program group, icons, and copy several files to the windows directory).

#### Pros

- Saves hard drive space on the workstation by running ProModel from the file server.
- End-user can run workstation setup program without administrative help.

#### Cons

- File server must always be available.

### Local Machine Install

This procedure allows you to install to and execute ProModel from the local hard drive of a workstation, yet still require the workstation to make a license request from the license server.

#### Pros

- Locally stored files minimize start-up time.
- One-step installation as opposed to a file server install.
- Limits network usage to short license requests only and allows users to connect remotely due to lower network traffic needs.

#### Cons

- You must install ProModel from the CD at each workstation.
- Install occupies more hard drive space on each workstation than when you install it on a file server share.

## Set Up License Server

Whether you choose to do a file server share or local hard drive install of the network version of ProModel, you must set up a *license server*. The license server consists of the security key that plugs into the license server's printer port, and the license manager software. When installed, the license server responds to ProModel license requests and allows workstations to run either a full version (if sufficient licenses are available) or a limited run-time version.

### 1.3.3 File Server Install

#### Install Programs & Grant Rights/Permissions

From a PC on the network, install the software on the file server and grant appropriate rights. Users will need at least the equivalent rights of read and file scan for the PROMOD4 directory.



How To

#### Install Program Files on File Server:

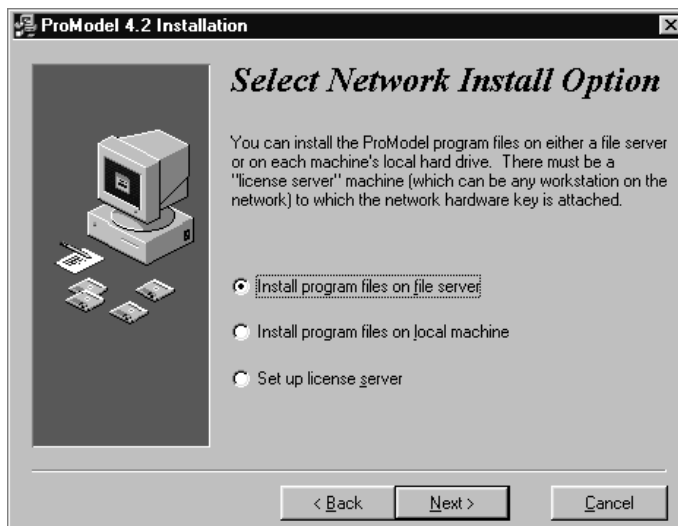
1. Start Windows.
2. Insert the CD-ROM.
3. Select **R**un... from the **S**tart menu.
4. Type **x:\setup** (where x is the CD-ROM drive letter) and press ENTER. The following dialog will appear.



5. Choose **Network package** and click **Next**.



6. Select **Install program files on file server**. This stores the files necessary to run ProModel onto the file server.



7. Choose the type of installation you wish to perform and click **Next**.



8. Select the directory to which you wish to install ProModel and click **Next**.



9. Click **N**ext to finish installing ProModel.



10. After the installation is complete, setup each workstation you will use to run ProModel. See *Workstation* on page 23 for more information.
11. Set up the license server. See *Set Up License Server:* on page 30.

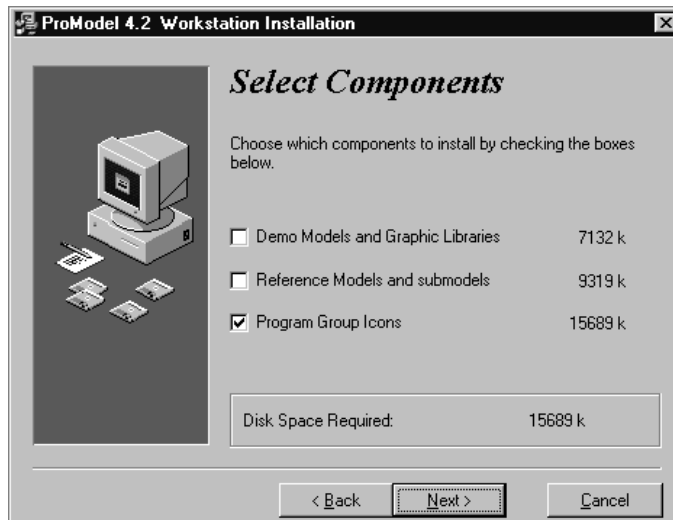
## Workstation

### How To **Setup a Workstation:**

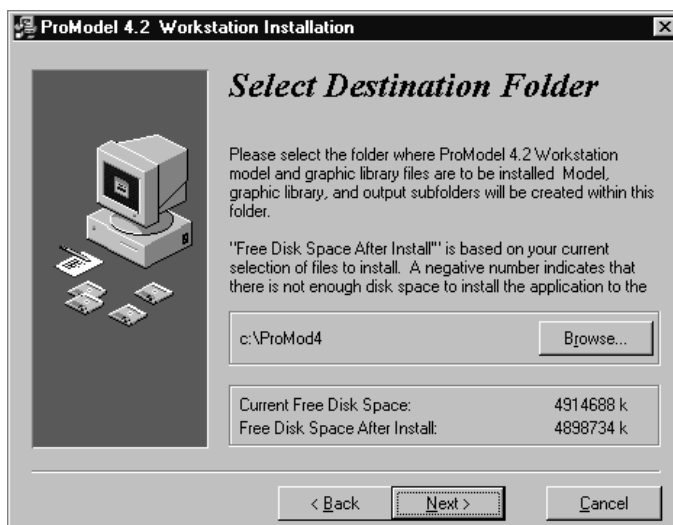
1. Run **PMWSETUP.EXE** (located in the directory to which you installed ProModel on the file server) from the workstation you will use to run ProModel.
2. Click **Next**.



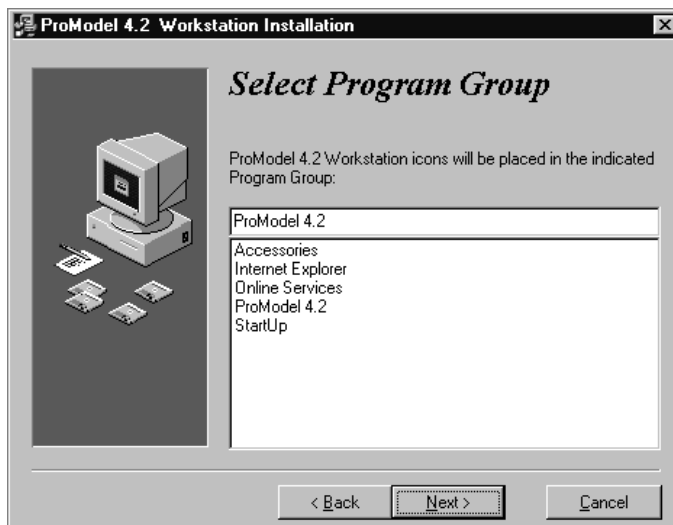
3. Select the components you wish to install and click **Next**.



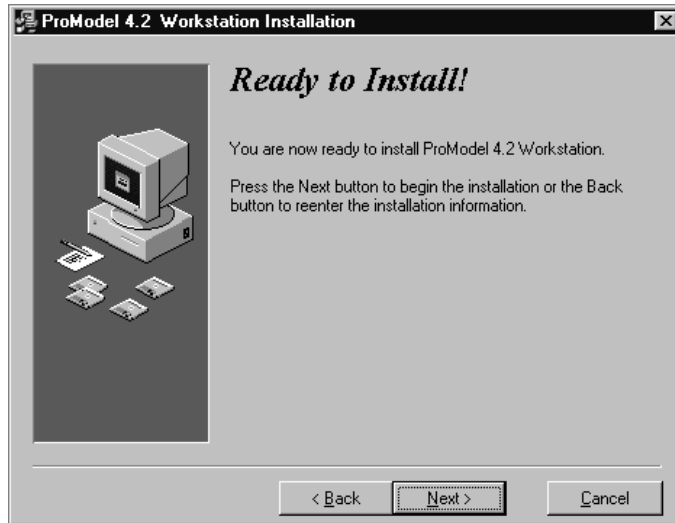
4. Select the folder to which you will to install ProModel and click **Next**.



5. Select the program group you wish to use and click **Next**. (By default, Pro-Model creates its own program group).



6. Click **N**ext to finish installing ProModel.



---

**i Note**

If you are running a network version of ProModel on a routed network and your license key server and workstations are located on different sub-nets, see *Find a License Key Server on a Routed Network* on page 34.

---

## 1.3.4 Local Machine Install

### How To **Install Program Files on Local Machine:**

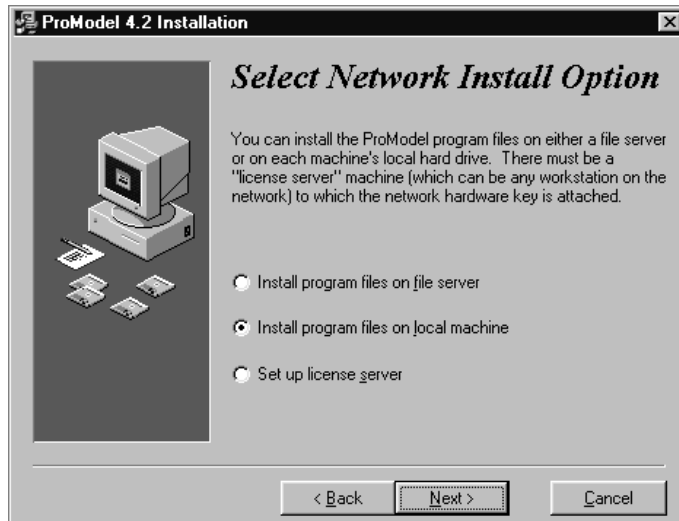
1. Start Windows.
2. Insert the CD-ROM.
3. Select **R**un... from the **S**tart menu.
4. Type **x:\setup** (where x is the CD-ROM drive letter) and press ENTER. The following dialog will appear.



5. Choose **Network package** and click **Next**.



6. Select **Install program files on local machine**. This stores the files necessary to run ProModel onto the current machine.



7. Choose the type of installation you wish to perform and click **Next**.



8. Select the directory to which you wish to install ProModel and click **Next**.



9. Select the program group you wish to use and click **Next**. (By default, ProModel creates its own program group).



10. Click **Next** to finish installing ProModel.



11. After the installation is complete, set up the license server. See *Set Up License Server*: on page 30.

**Note** If you are running a network version of ProModel on a routed network and your license key server and workstations are located on different sub-nets, see *Find a License Key Server on a Routed Network* on page 34.

---

## 1.3.5 Set Up License Server

PROMODEL software monitors the licensed user activity through a security key attached to the parallel port (for the network version of ProModel, you must have the red key supplied by PROMODEL Corporation). The machine to which you attach the key becomes the license manager—whether it is a dedicated file server or a workstation. The security server can run on Windows 95, 98, or NT 4.0 and listen for incoming license requests over any of the following network protocols: IPX, TCP/IP, and NetBEUI. If the security server is not functioning, ProModel will start as a limited run-time version.

**Note** If you are running a network version of ProModel on a routed network and your license key server and workstations are located on different sub-nets, see *Find a License Key Server on a Routed Network* on page 34.

---

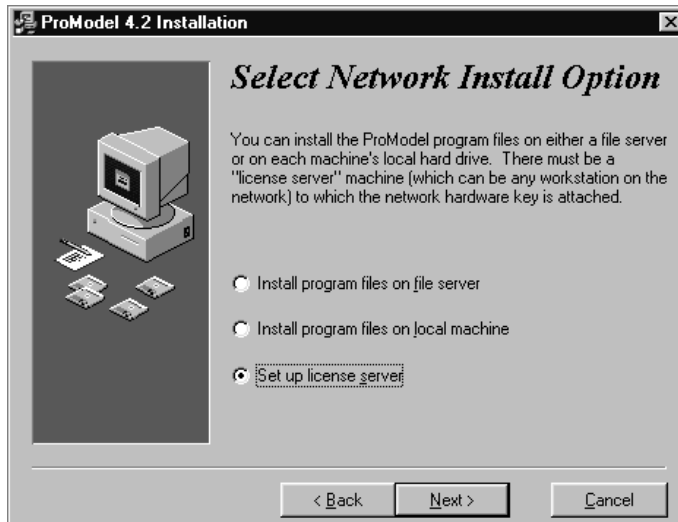
### How To **Set Up License Server:**

1. From the machine you wish to use as the license manager, start Windows.
2. Insert the CD-ROM.
3. Select **Run...** from the **Start** menu.

4. Type `x:\setup` (where x is the CD-ROM drive letter) and press ENTER. The following dialog will appear.



5. Choose **Set up license server** and click **Next**.



6. Select the directory to which you wish to install the license server and click **Next**.



7. Click **Next** to finish installing the license server.



8. During the installation, the following dialog will appear.



9. If you click **Next**, ProModel will automatically set up the license server. If you click **Skip**, you will have to set up the license server manually.

---

**Note**

You need to install the device driver only once. However, you must launch the license manager program *each time you reboot the key server*. To automatically start the license manager each time you reboot the system, create and place an icon for NHSRVW32.EXE in the workstation's startup folder.

---

## Set Up License Server Manually

After successfully running the setup for the license server, if you chose to manually install the device driver for the security key and launch the license manager software, follow the steps below.

**How To**

### Install the Device Driver:

1. Open a DOS box and, from the directory to which you installed the license server, run **HINSTALL -i**.
2. After you receive a confirmation that the driver installed successfully, reboot the workstation

## How To **Start the License Manager Software:**

- From the directory to which you installed the license server, run **NHSRVW32.EXE**. A window will appear and show the network protocols to which the license manager will listen for license requests.

---

### Note

You need to install the device driver only once. However, you must launch the license manager program *each time you reboot the key server*. To automatically start the license manager each time you reboot the system, create and place an icon for NHSRVW32.EXE in the workstation's startup folder.

---

## **Find a License Key Server on a Routed Network**

In order for a workstation to run the network version of ProModel properly, the workstation must check out a license from a license server. To make a license request, the workstation sends a broadcast message out on the network and awaits a response from the license server. If the license server and the workstation running ProModel are on the same sub net of a routed network (or on the same network of a non-routed network), the license server receives the request and responds. Due to the nature of routed networks, if the license server and workstation running ProModel are not on the same sub net of a routed network, the key server will not receive the license request broadcast.

To resolve this problem, the workstation must send a license request directly to the computer on the network set up as the license server. To identify which computer on the network is the license server, you must create and store a text file called NETHASP.INI in the directory to which you installed ProModel on the workstation or file server.

For TCPIP based network the NETHASP.INI file must contain the following lines

```
[NH_COMMON]
NH_TCPIP=Enabled

[NH_TCPIP]
NH_TCPIP_METHOD=TCP
NH_SERVER_ADDR=<Enter the license server's IP address here>
```